

FOR LEASE

± 4,778 RSF STANDALONE MEDICAL OFFICE BUILDING

Located in the heart of the Mills District

1215 NEBRASKA STREET
ORLANDO, FL 32803

ADJACENT TO ADVENTHEALTH ORLANDO MAIN HOSPITAL CAMPUS



PROPERTY HIGHLIGHTS

- ± 4,778 SF Standalone Medical Office Building Available
- Ideally positioned to service the Downtown Orlando, College Park, Baldwin Park and Winter Park submarkets
- Building Facade Signage Available facing Mills Avenue & Nebraska Street
- 5/1,000 SF Parking Ratio
- Tenant Improvement Allowance Available
- Asking Rate: \$30.00/SF NNN



1 Mile Radius

11,025

Total Population

37

Median Age

\$164,976

Average Household Income

3 Mile Radius

105,204

Total Population

38.8

Median Age

\$145,910

Average Household Income

5 Mile Radius

288,188

Total Population

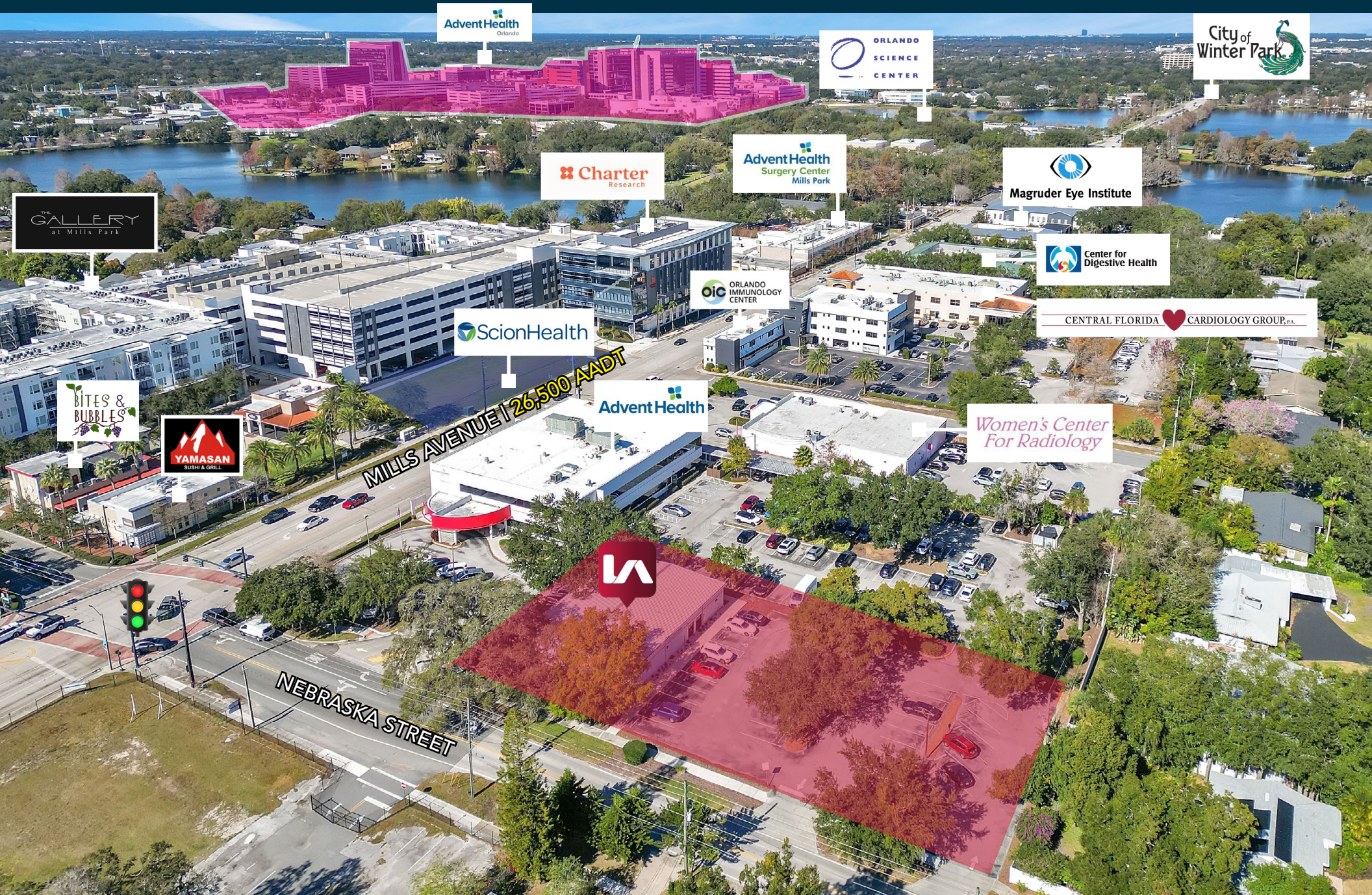
38.3

Median Age

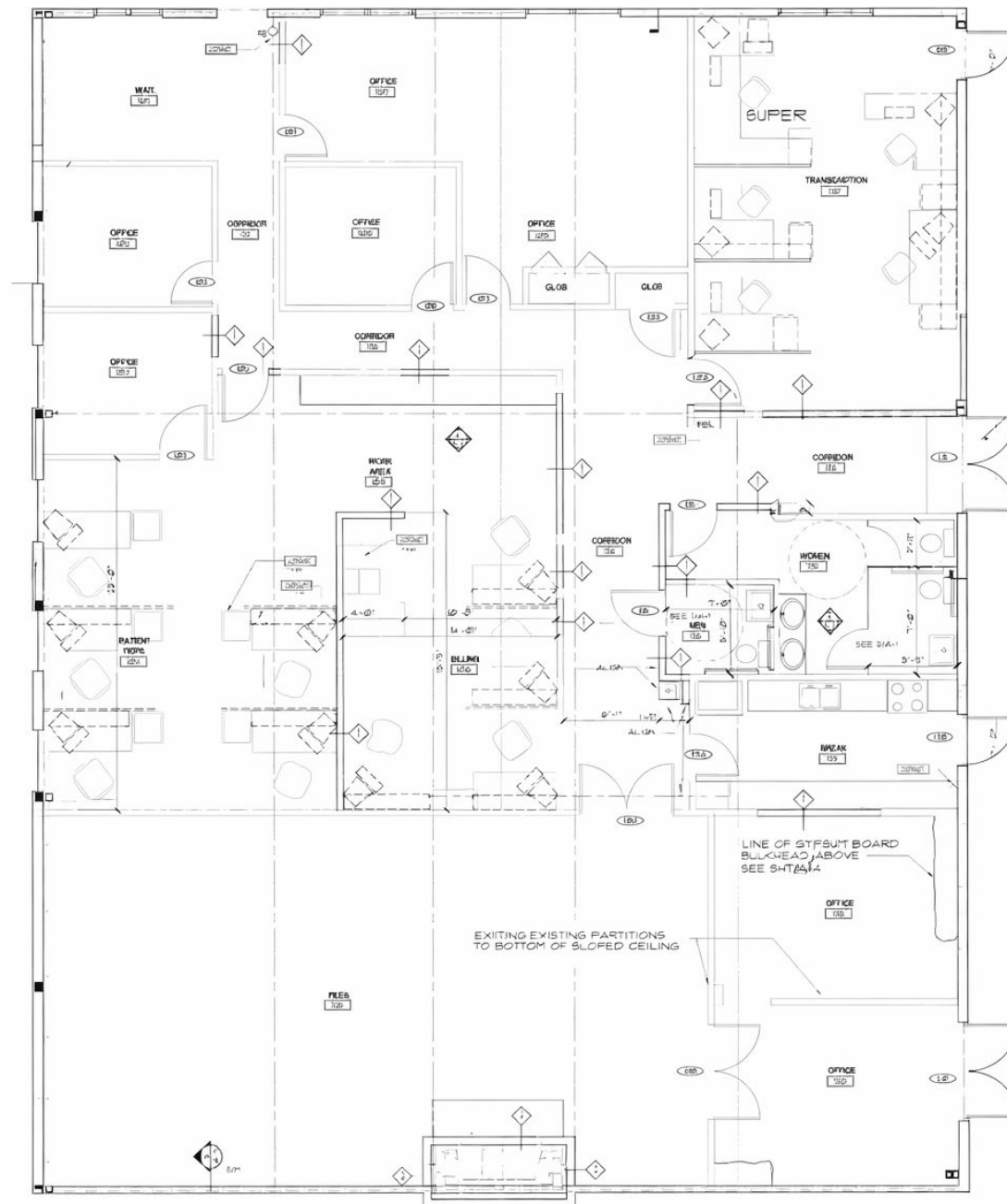
\$118,566

Average Household Income

AREA OVERVIEW



FLOOR PLAN



±4,778 SF AVAILABLE

MAP OVERVIEW





JASON BANTEL, CCIM

SENIOR VICE PRESIDENT | PRINCIPAL

○ 321.281.8509

C 407.694.0283

jbantel@lee-associates.com

MATTHEW WEINBERGER

VICE PRESIDENT

○ 321.281.8510

C 239.246.1030

mweinberger@lee-associates.com

LEE & ASSOCIATES
COMMERCIAL REAL ESTATE SERVICES

All information furnished regarding property for sale, rental or financing is from sources deemed reliable, but no warranty or representation is made to the accuracy thereof and same is submitted to errors, omissions, change of price, rental or other conditions prior to sale, lease or financing or withdrawal without notice. No liability of any kind is to be imposed on the broker herein.