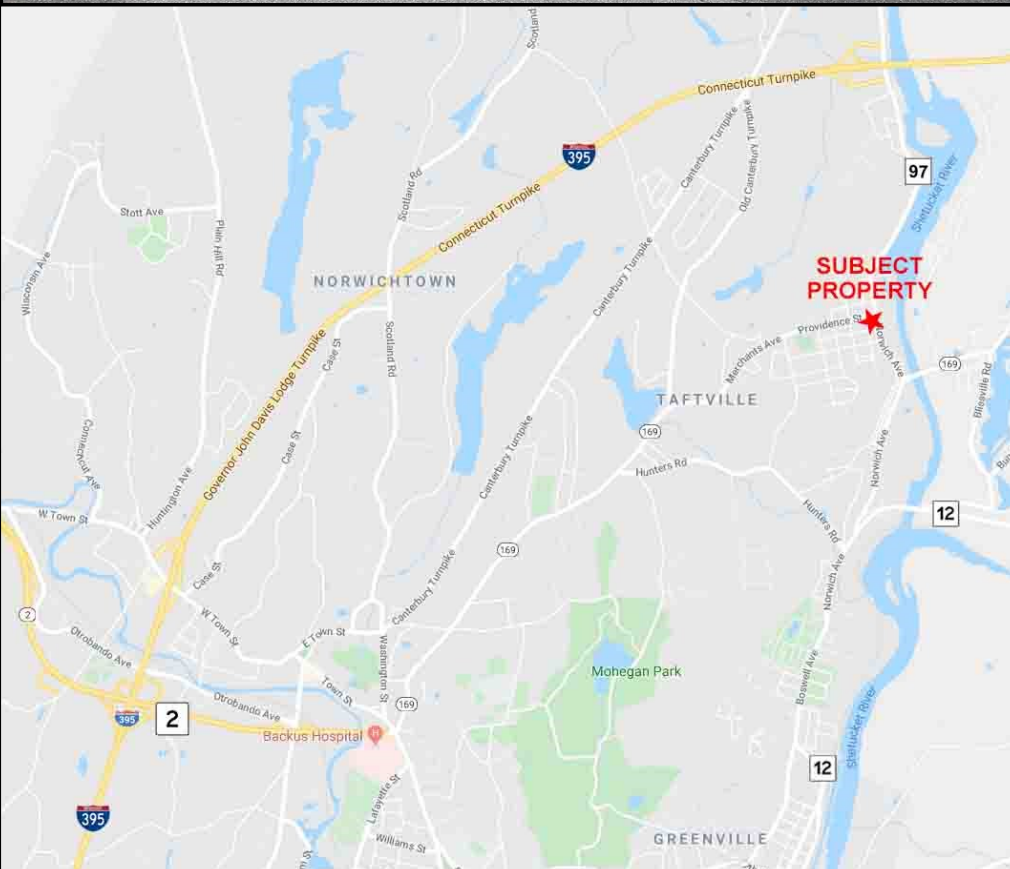
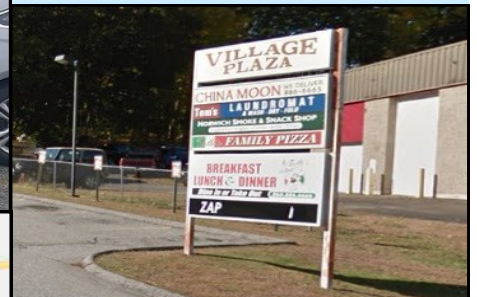


500 NORWICH AVE., NORWICH, CT

One Retail Space For Lease



- ⇒ Taftville section of Norwich
- ⇒ \$1,800/Month
Gross + Utilities
- ⇒ Unit 7: 1,500 SF
- ⇒ Frontage: 150 Ft.
- ⇒ Zone: General Commercial
- ⇒ Traffic Count: 7,200



- ⇒ On Route 97
- ⇒ Close to Routes 12 & 169
- ⇒ Easy access to I-395
- ⇒ Currently under construction with new improvements
- ⇒ Great signage
- ⇒ Ample parking - 50+/-

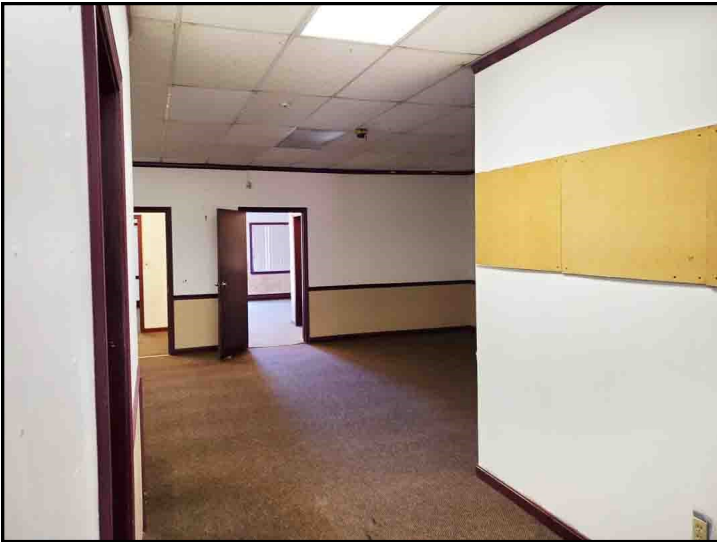
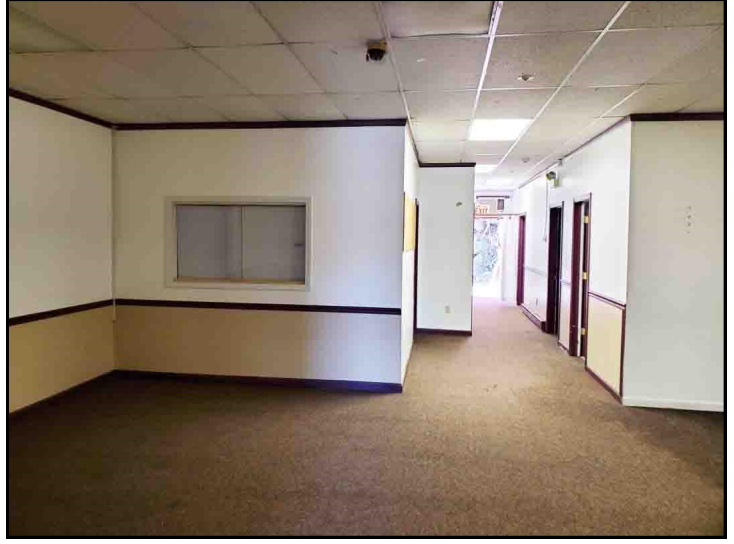
LYMAN

REAL ESTATE BROKERAGE & DEVELOPMENT

www.LymanRE.com

Sam Lyman

Main Office:
1160 Boston Post Rd.
Westbrook, CT 06498
Mailing Address:
73 Second Ave.
Westbrook, CT 06498
860-887-5000 x15 Office
860-876-0359 Cell
Sam@lymanre.com



Demographics	1 MILE	3 MILES	5 MILES
Total Population	4,279	22,739	51,561
Total Households	1,788	9,127	20,687
Average Household Income	\$68,323	\$74,503	\$75,164

All information stated is from sources deemed reliable and is submitted subject to errors, omission, changes of other terms and conditions, prior sales, financing or withdrawal without notice. Buyer/Tenant agents will be eligible for a portion of commission only if they have an existing signed representation.