

SUITE 110
±12,423 SF

19TH AVENUE CORPORATE CENTER

*A ±56,964 SF multi-tenant flex/industrial project
Available for Lease with Ample parking, 19th Avenue
Frontage & Close Proximity to Loop 101 & I-17 Freeway*

20601 NORTH 19TH AVENUE, SUITE 110, PHOENIX, AZ 85027

±12,423 SF

TOTAL AVAILABLE

4.2/1,000

PARKING RATIO



19TH AVENUE
CORPORATE CENTER

STRATEGIC LOCATION & *EXCEPTIONAL ACCESSIBILITY*

With convenient proximity to the I-17, Loop 101, and Deer Valley Airport, 19th Avenue Corporate Center is well equipped to meet the needs of R&D, manufacturing, and distribution companies.

+12,423 SF
TOTAL AVAILABLE

20'
CLEAR HEIGHT

+26,586 VPD
ON HIGHLY TRAFFICKED 19TH AVE

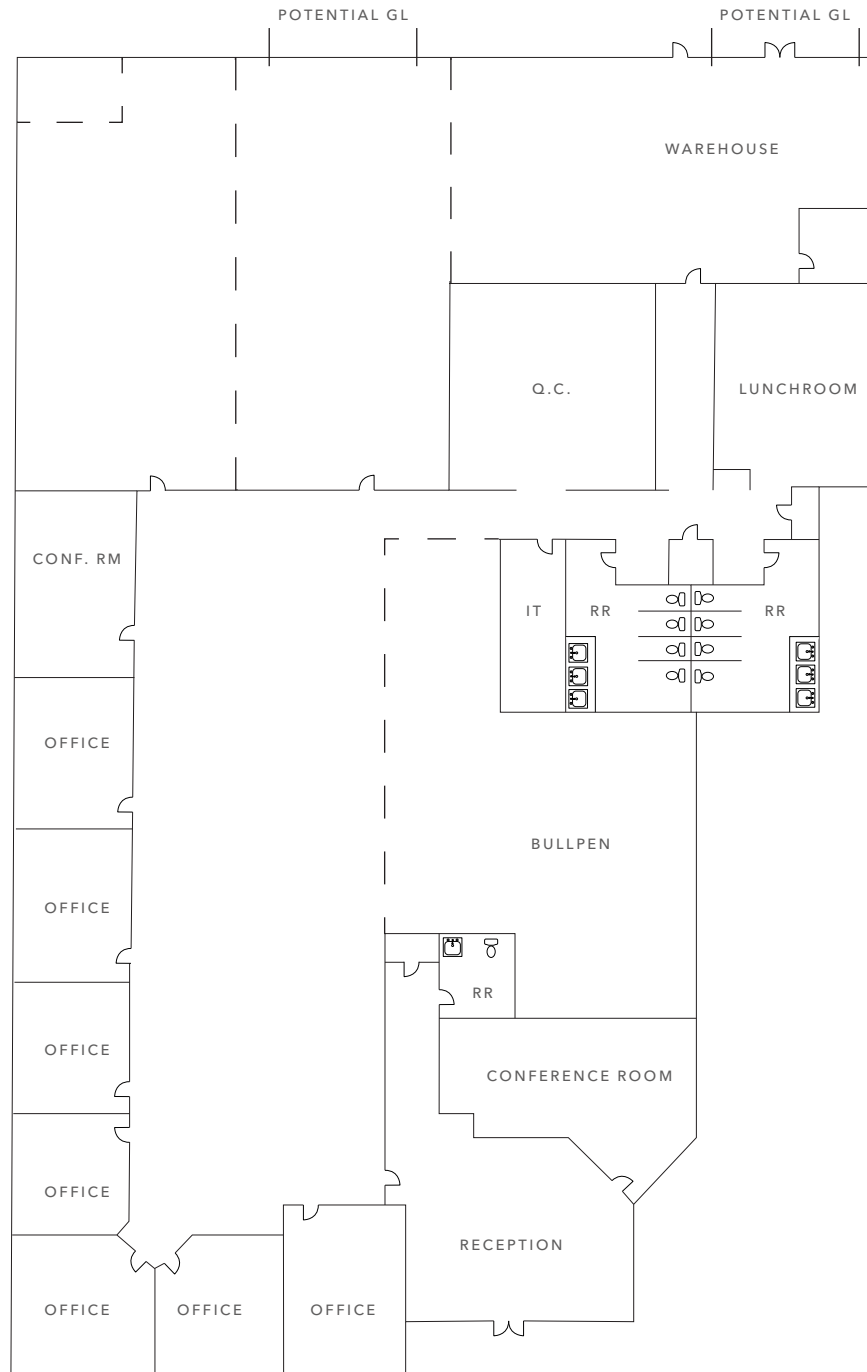
4.2:1000
PARKING RATIO



km Kidder
Mathews



19TH AVENUE CORPORATE CENTER



Landlord is open to reconfiguration and adding more warehouse.

PROJECT HIGHLIGHTS

Suite 110: ±12,423 square feet

100% HVAC

Loop 101 & I-17 proximity

Covered parking available

4.2/1,000 parking ratio

Frontage on 19th Avenue

Prominent building signage plus monument signage available

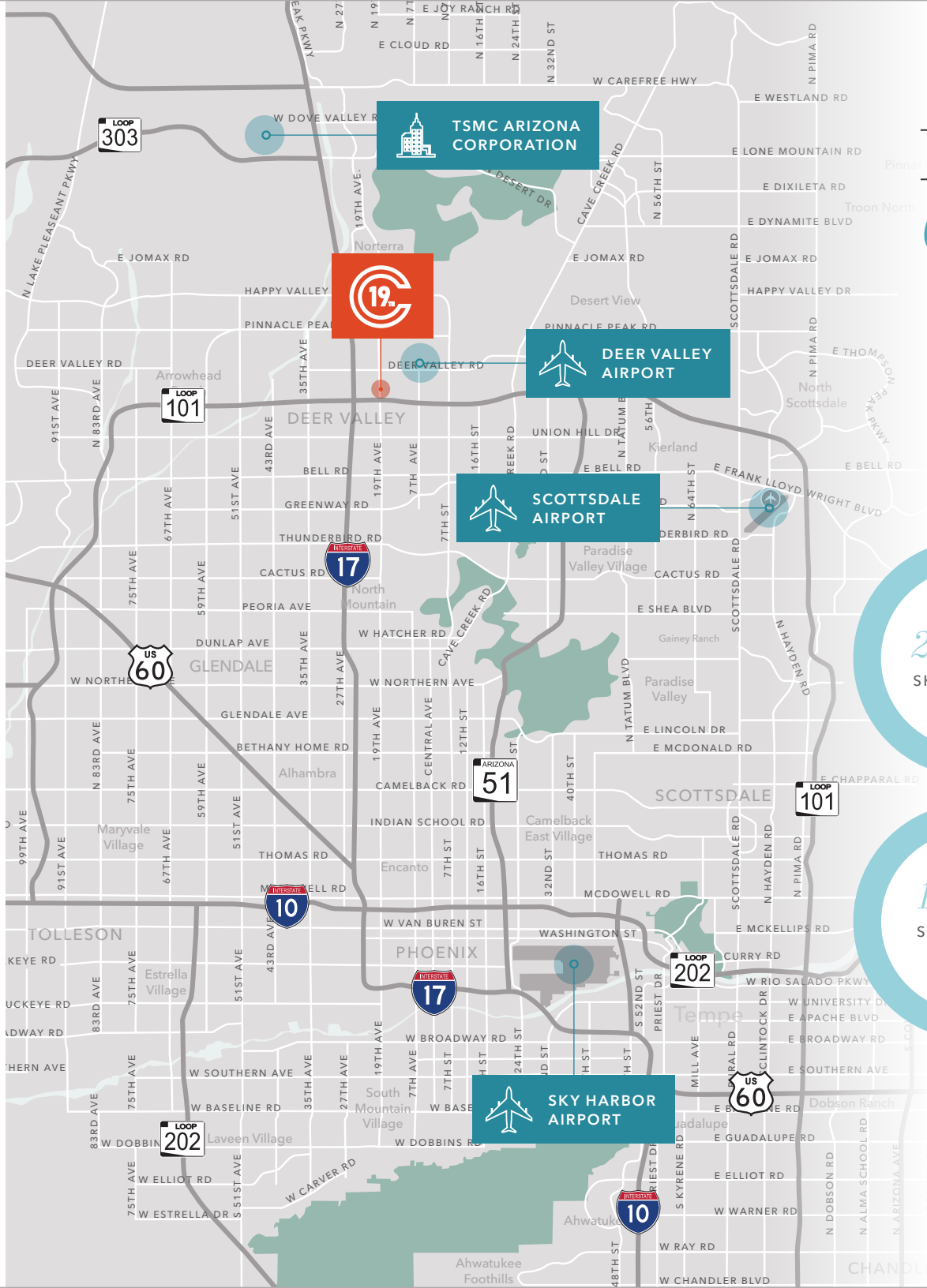
24 hour access

— — Dashed lines represent potential configuration.





19TH AVENUE CORPORATE CENTER



TSMC ARIZONA CORPORATION

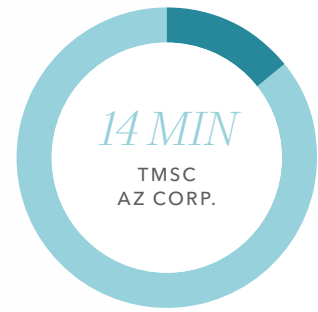
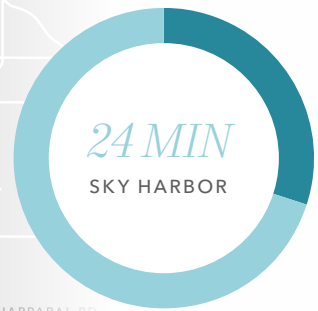


DEER VALLEY AIRPORT

SCOTTSDALE AIRPORT

PERFECTLY CONNECTED

19th Avenue Corporate Center benefits from direct access to I-17 and Loop 101



SUITE 110
±12,423 SF

19TH AVENUE CORPORATE CENTER

20601 NORTH 19TH AVENUE
SUITE 110, PHOENIX, AZ 85027

For leasing information contact

MIKE CIOSEK, SIOR
602.513.5135
mike.ciosek@kidder.com

ERIC BELL, SIOR
602.513.5151
eric.bell@kidder.com

DREW EISEN
602.513.5174
drew.eisen@kidder.com

KIDDER.COM

This information supplied herein is from sources we deem reliable. It is provided without any representation, warranty, or guarantee, expressed or implied as to its accuracy. Prospective Buyer or Tenant should conduct an independent investigation and verification of all matters deemed to be material, including, but not limited to, statements of income and expenses. Consult your attorney, accountant, or other professional advisor.