

1702 OLYMPIC BOULEVARD

SANTA MONICA, CA 90404



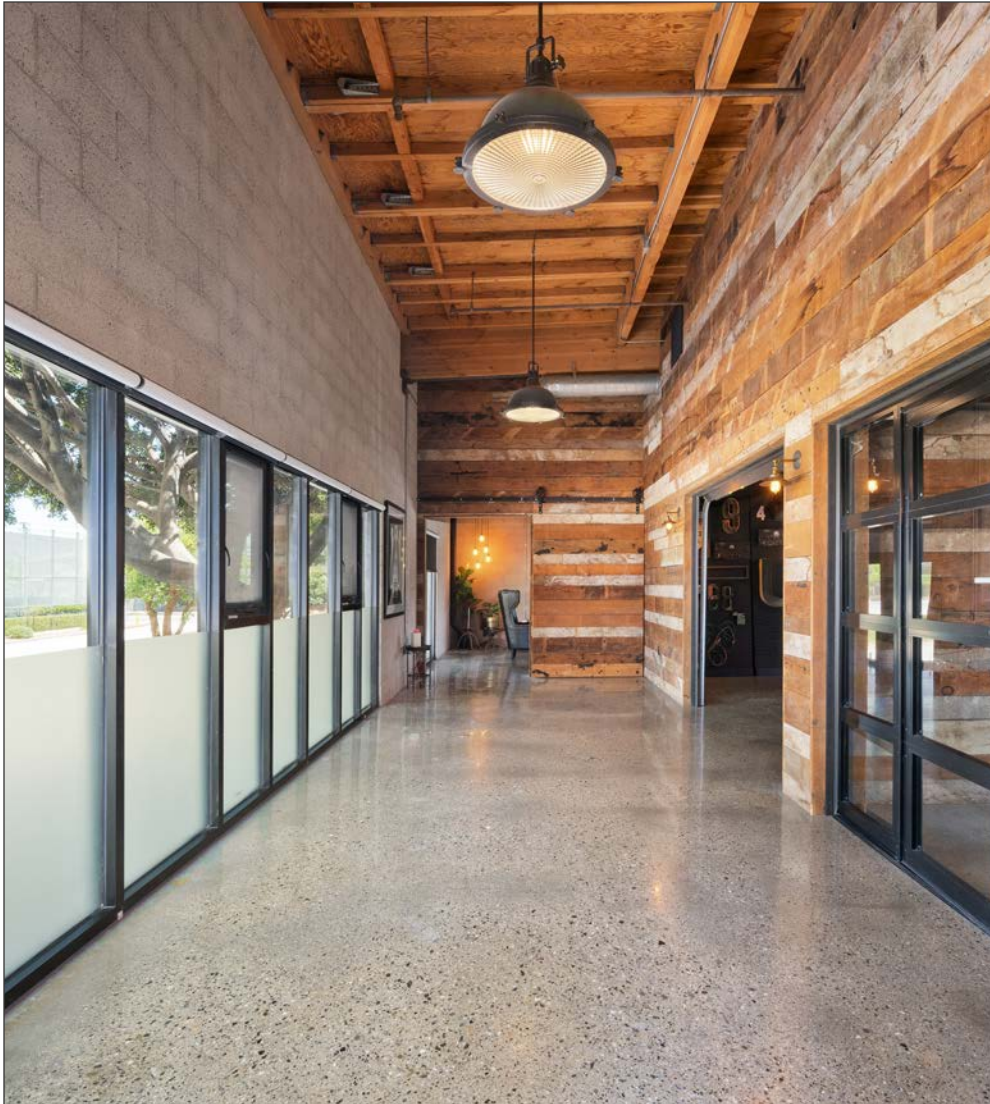
FOR LEASE



A DIVISION OF



PRODUCTION / EDITORIAL / CREATIVE SPACE



FEATURES

- Turnkey creative office / production space
- Suite includes a modular sound proof booth / call room
- Modern open kitchen
- Excellent light and airflow throughout
- Private gated entrance with large reception area
- High-height exposed wood ceilings
- Polished concrete floors
- One on-site EV charging station
- Easy access to the 10 FWY, PCH & 405
- 5 minute walk to Metro Expo Line
- 17th St/Santa Monica College Station
- Private gated parking below the building on street level



No warranty or representation is made to the accuracy of the foregoing information. Terms of sale or lease are subject to change or withdrawal without notice.

PREMISES

Suite 1A
± 2,450 SF

RENT

\$3.95/SF, NNN

TERM

Through July 31, 2026

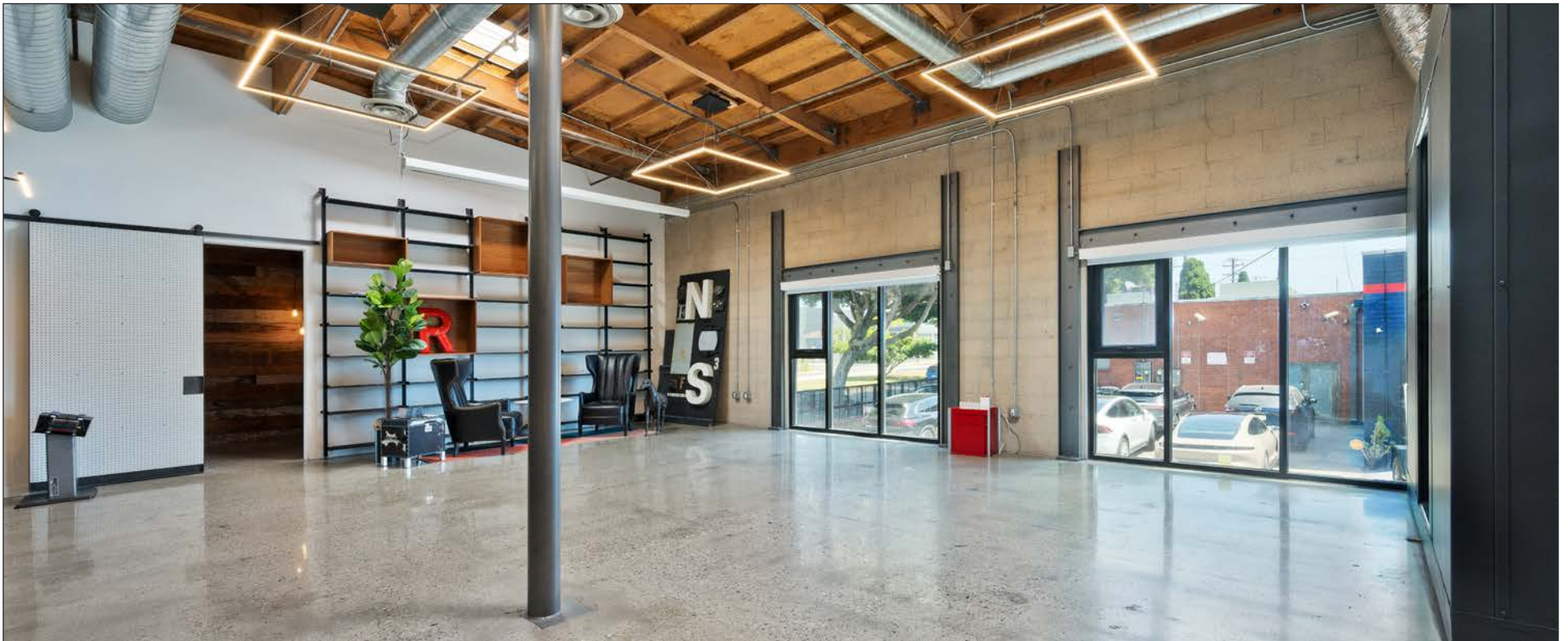
OCCUPANCY

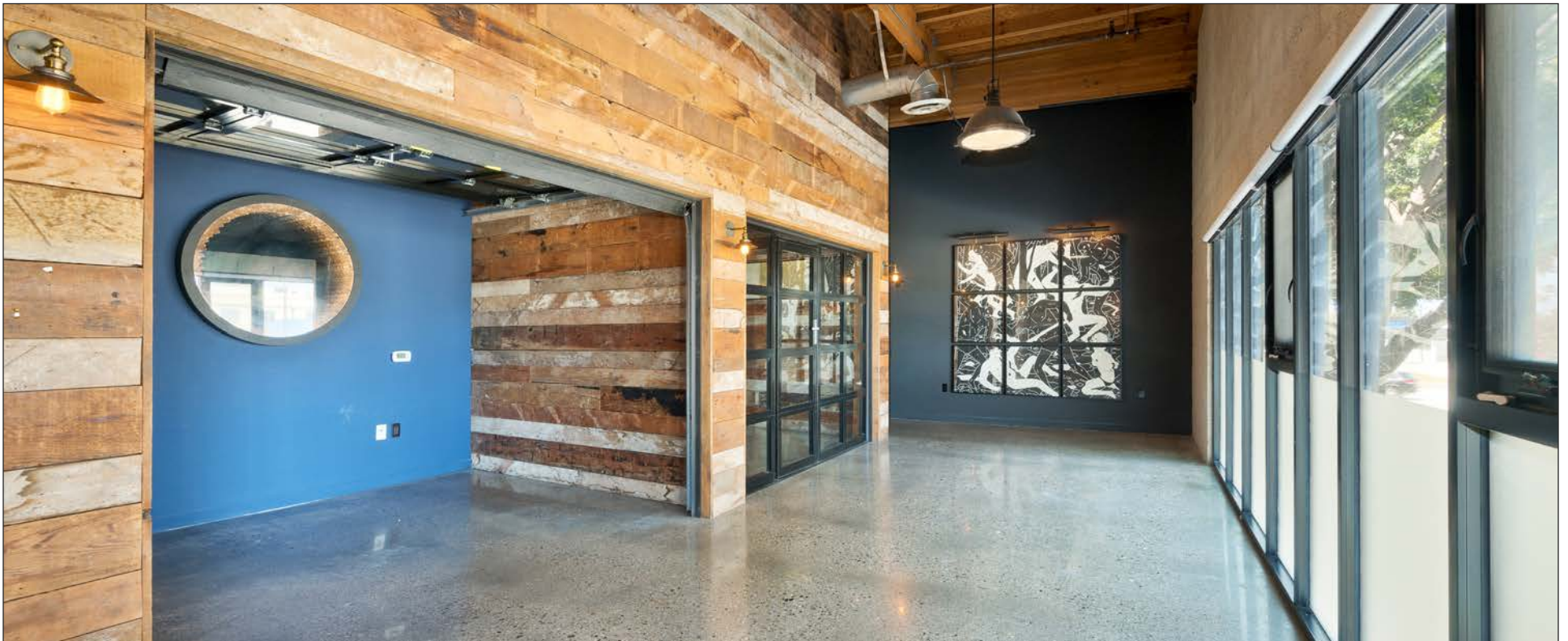
Immediate

PARKING

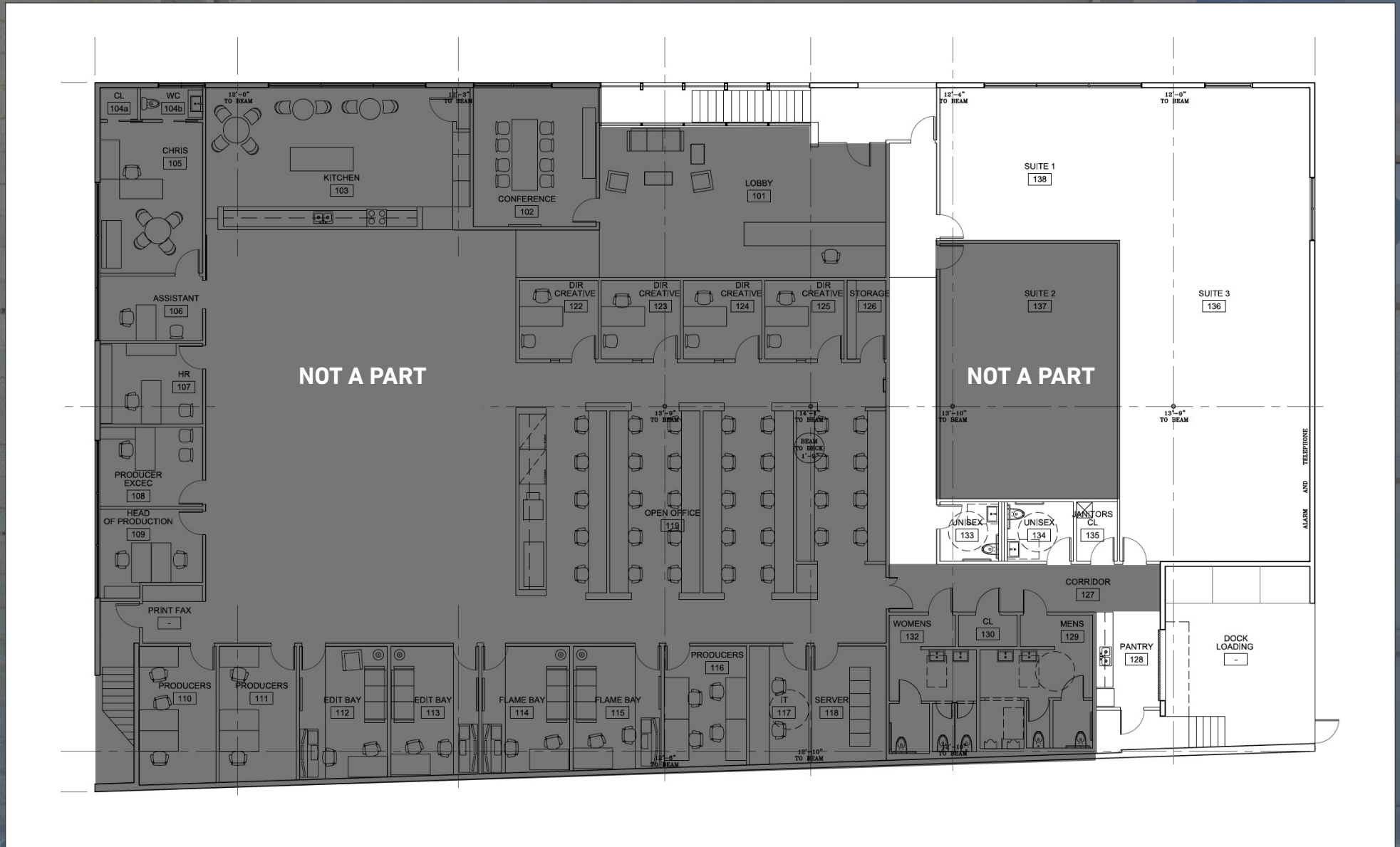
6 Gated Secure Spaces
(\$195/Space/Month)







FLOOR PLAN



LOCATION OVERVIEW



NEARBY MAJOR TENANTS

WEST OLYMPIC CORRIDOR

Bad Robot
Indian Paintbrush
Final Cut
JBC Music
Arsenal FX Color
Digital Nation Entertainment
Cutters
Parks Mac Donald
Planet Blue HQ
Radical Media
Threshold Entertainment

BROADWAY PLACE

General Editorial
TigerConnect
Cut + Run
Cosmo Street Editorial
Apache

MAD Architects
Rock Paper Scissors
Cross Creek Entertainment

COLORADO CENTER

HULU
HBO
Bird
ShoeDazzle

PENN FACTORY/PENN STATION

GoodRX
Kite Pharma
Redbull North America HQ
Tala
Center for Media & Design

1702 OLYMPIC

COLORADO CORRIDOR

Viacom
Lionsgate
Interscope Records
Illumination
Gameshow Network
Universal Music Group
Starz Entertainment
Simple Practice
Goop
The Honest Company
FIGS
Reddit

WATER GARDEN

Amazon Studios
CBS
AMC Networks
Oracle

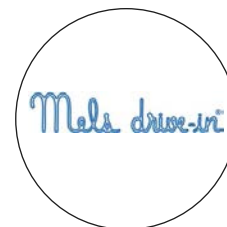
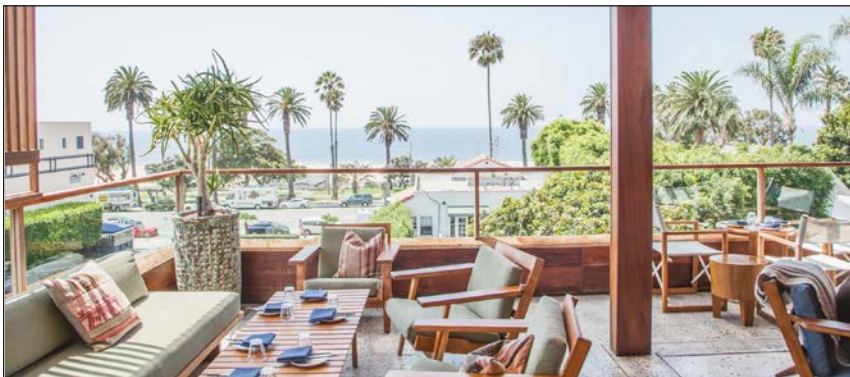
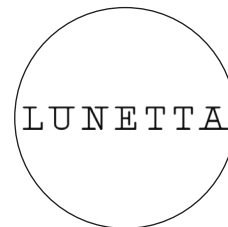
BERGAMOT STATION

FIG Gallery
Ikon Limited Fine Art
Montalba Architects
Sulkin Studio Architecture

BERKELEY SM EAST

Blackbear Pictures
Blue Bonsai
Jenni Kayne
Soundbox
Apogee Electronics
Cartel
Yoga Glo

AREA AMENITIES



CONTACTS

GEORGE WILSON

310.899.2738
gwilson@leewestla.com
AGT DRE 02090678

LINDSAY SHUFORD

310.899.2710
lshuford@leewestla.com
AGT DRE 02231518

Lee & Associates Los Angeles West, Inc.
1508 17th Street, Santa Monica, CA 90404
www.leewestla.com | DRE 01222000



A DIVISION OF



LEE &
ASSOCIATES