



# PRIME INDUSTRIAL DEVELOPMENT OPPORTUNITY

**±2.73 ACRES**

**7225 NW 84<sup>th</sup> Avenue Medley, FL**

**\$7,950,000**



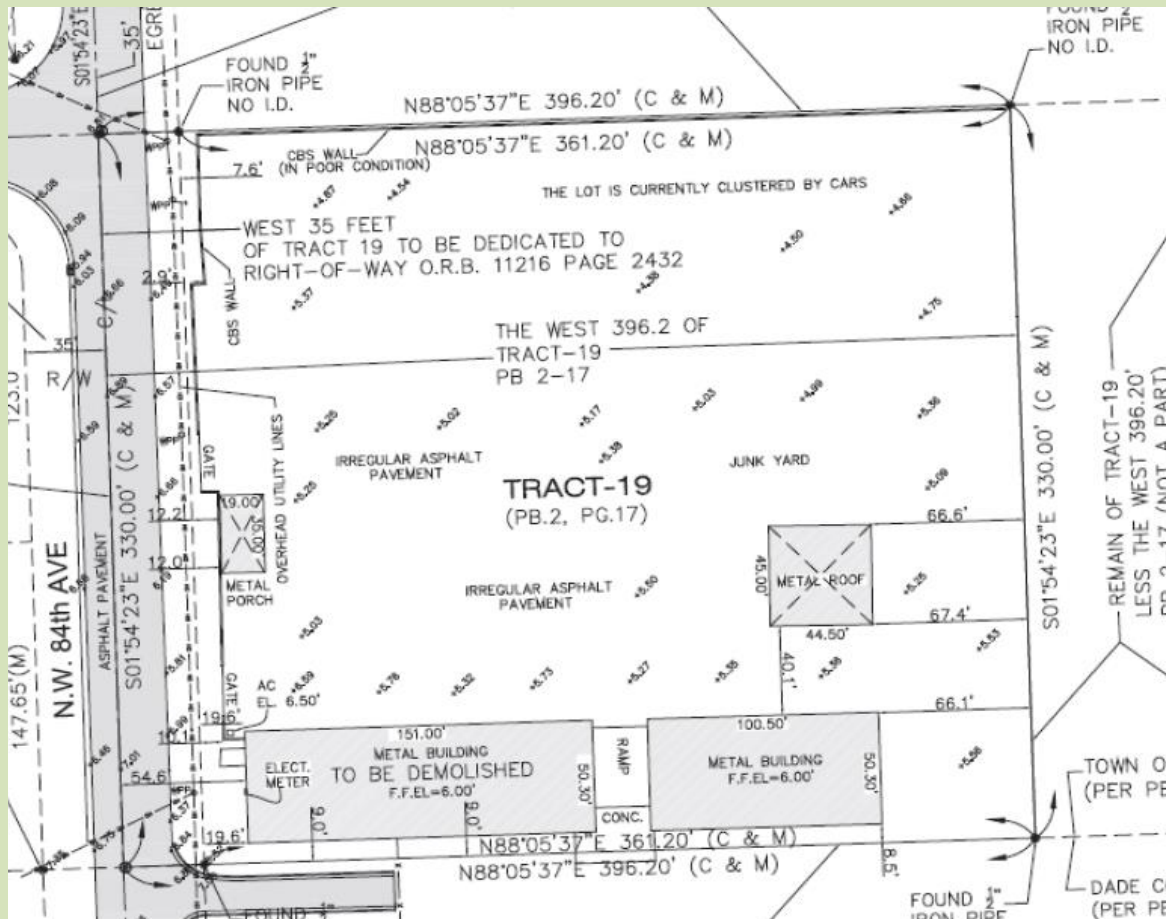
MIAMI GABLES REALTY, INC — ADRIANO A. GONZALEZ, MANAGING BROKER  
10300 SUNSET DRIVE SUITE 142 MIAMI, FL 33173  
(305) 992-6478 AG@MIAMIGABLES.COM





## Property Summary

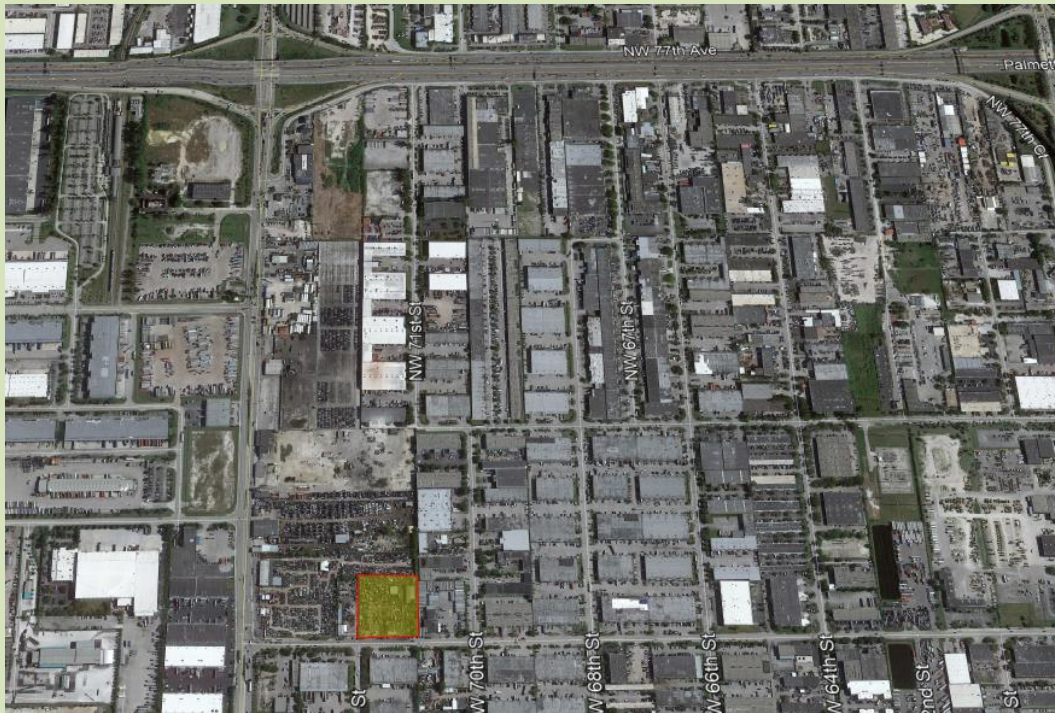
- Quick access to 826 (Palmetto) & Florida Turnpike via NW 74<sup>th</sup> St
- M-1 (IU-3) Zoning (Heavy Industrial / Manufacturing)
- +330' frontage (NW 84<sup>th</sup> Ave)
- Fenced property perimeter
- Close proximity to airport
- City water & sewer



MIAMI GABLES REALTY, INC — ADRIANO A. GONZALEZ, MANAGING BROKER  
10300 SUNSET DRIVE SUITE 142 MIAMI, FL 33173  
(305) 992-6478 AG@MIAMIGABLES.COM







The information contained in this brochure is believed to be accurate but is not guaranteed. The recipient(s) acknowledges that they are responsible for thorough due diligence required to verify this information before purchasing the real estate. Miami Gables Realty, Inc. is not responsible for any liabilities arising from the information furnished within

**MIAMI GABLES REALTY, INC — ADRIANO A. GONZALEZ, MANAGING BROKER**  
10300 SUNSET DRIVE SUITE 142 MIAMI, FL 33173  
(305) 992-6478 AG@MIAMIGABLES.COM

