

2 WILLOW STREET
SOUTHBOROUGH | MA

OFFICE AVAILABLE FOR LEASE



R.W. HOLMES
COMMERCIAL REAL ESTATE

FOR MORE INFORMATION PLEASE CONTACT:

CRAIG JOHNSTON
CJOHNSTON@RWHOLMES.COM
(508) 651-9022

JIM BARTHOLOMEW
JIMB@RWHOLMES.COM
(617) 780-7929

GARRY HOLMES
GHOLMES@RWHOLMES.COM
(508) 651-9020

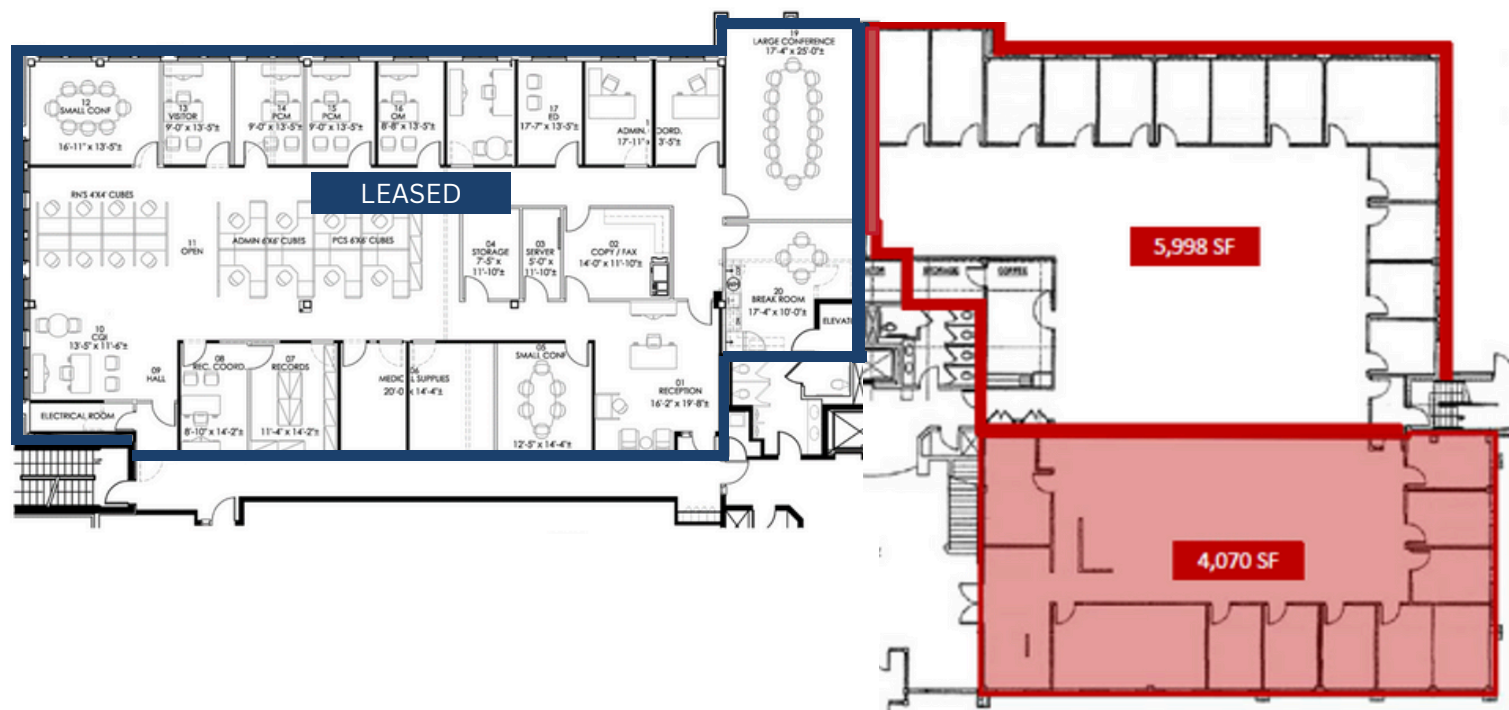
PROPERTY OVERVIEW

2 Willow Street in Southborough, MA is a 40,000-square-foot office building nestled on a spacious 5.8-acre lot at the intersection of Route 9 and the Route 30 with ample free parking.

Available	1st Floor 4,074 - 10,068 SF
Building Size	40,000 SF
Parking	140 Spaces (3.50/1,000 SF)
Local ownership with onsite management	
Easy access to Route 9 and Mass Turnpike (I-90)	
Elevator	
Abundance of local amenities	
Lease Rate:	\$18.50/SF plus electricity



FLOOR PLAN





R.W. HOLMES

COMMERCIAL REAL ESTATE

CRAIG JOHNSTON

Senior Vice President
508-651-9022
cjohnston@rwholmes.com

JIM BARTHOLOMEW

Vice President
617-780-7929
jimb@rwholmes.com

GARRY HOLMES

President
508-651-9020
gholmes@rwholmes.com

321 COMMONWEALTH ROAD, SUITE 202, WAYLAND, MA. 01778 | PHONE (508) 655-5626 WWW.RWHOLMES.COM

All information furnished regarding property for sale, rental or financing is from sources deemed reliable. No representation is made as to the accuracy thereof and is submitted subject to errors, omissions, change of price, rental or other conditions, prior sale, lease or financing, or withdrawal without notice.