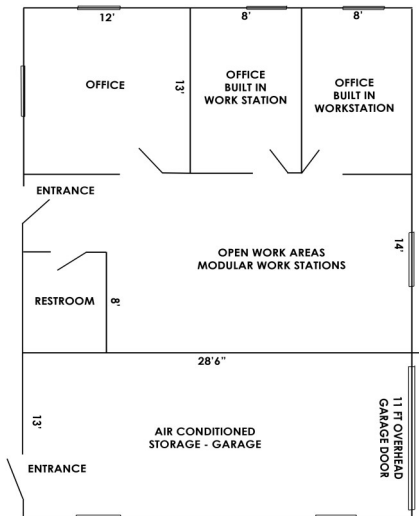


**Building 1 Floorplan**

(Drawing not to scale. For informational purposes only.)



**Building 2 Floorplan**

(Drawing not to scale. For informational purposes only.)

31640 US Hwy 19 N, Suite 1  
Palm Harbor, FL 34684



**FOR LEASE**

**Office Space  
Metropole  
Commerce Park**  
3,600 SF (mol) &  
1,260 SF (mol) Units



**9550 16th Street North  
St. Petersburg, FL 33716**

[www.BoardwalkCompany.com](http://www.BoardwalkCompany.com)  
LICENSED REAL ESTATE BROKER

THE  
**BOARDWALK**  
COMPANY

**FOR LEASE**

# THE BOARDWALK COMPANY



**Executive Office**



**Executive Office**



**Conference Room**



**File Room**

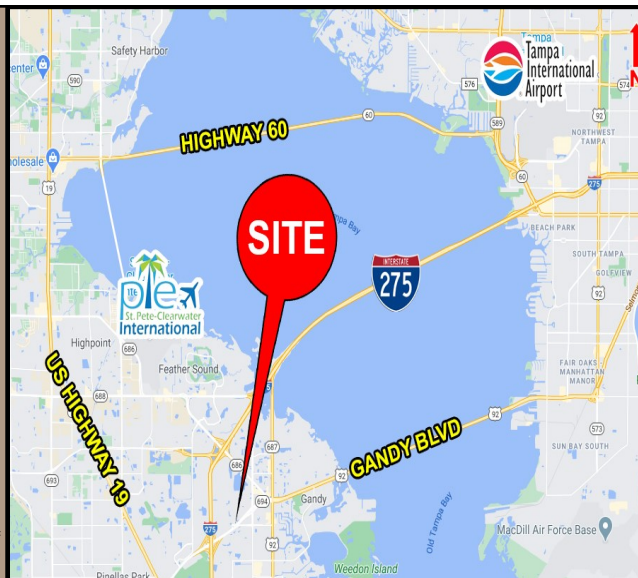
**3,600 SF & 1,260 SF OFFICE BUILDINGS • ST. PETERSBURG**

**Immediate Occupancy**  
**Available**

**Property #4194**

- 3,600 sf free standing professional office building located within the Metropointe Commerce Park. Located at the intersection of Commerce Ave N and 16th Street N
- Fully furnished and move in ready. 24 hour security, ample parking, \$19.50 /sf modified gross rent plus suite janitorial, telephone, electric.
- 1,260 Sf building with general office space and utility garage with overhead door access. Rental rate at \$1,627.50 / month modified gross plus electric, janitorial, telephone.
- **Immediate Occupancy Available**
- Zoned EC-1, Employment Center-1.

The information contained herein was collected from sources deemed to be reliable. The Boardwalk Company, its Agents and Sellers make no warranties or representation of any manner as to the accuracy, and the same is subject to misstatements of fact, errors or omissions, prior sale, change of price, terms, withdrawal from market without notice or other modifications. Buyer, tenants and/or all other parties shall verify all information independently.



For more information, contact:

**John Quattrochi**  
President/Broker

Office: 727.784.1007  
Fax: 727.784.1008  
Cell: 727.460.2201

[jq@boardwalkcompany.com](mailto:jq@boardwalkcompany.com)

31640 US Hwy 19 N, Suite 1  
Palm Harbor, FL 34684

[www.BoardwalkCompany.com](http://www.BoardwalkCompany.com)  
LICENSED REAL ESTATE BROKER