
TROPHY SUBLEASE SPACE AVAILABLE

1735 Market St.
Philadelphia, PA

10,935 SF On The 27th Floor

SPACE FEATURES:

- Immediate occupancy with lease term through August 31, 2027
- Asking rental rate: \$26.00 NNN
- Great Views
- 4 corner offices
- 15 perimeter offices
- 7 interior offices
- 1 large perimeter conference room
- 1 medium interior conference room
- Kitchenette/Cafe'
- Double glass door entryway
- Furniture included



BUILDING FEATURES:

- Direct in building access to SEPTA's Suburban Station
- Private tenant only amenities floor with multiple lounges, outdoor terrace, coffee bar, and a conference center.
- Located in the heart of Center City
- Steps from the Comcast Center and Comcast Technology Center

For information, please contact:

James P. Mullarkey
Executive Managing Director
t 215-320-4521
james.mullarkey@nmrk.com

One Commerce,
2005 Market Street, Suite 900
Philadelphia, PA 19103
t 215-561-8300
nmrk.com

Licensed in Pennsylvania as Newmark Real Estate

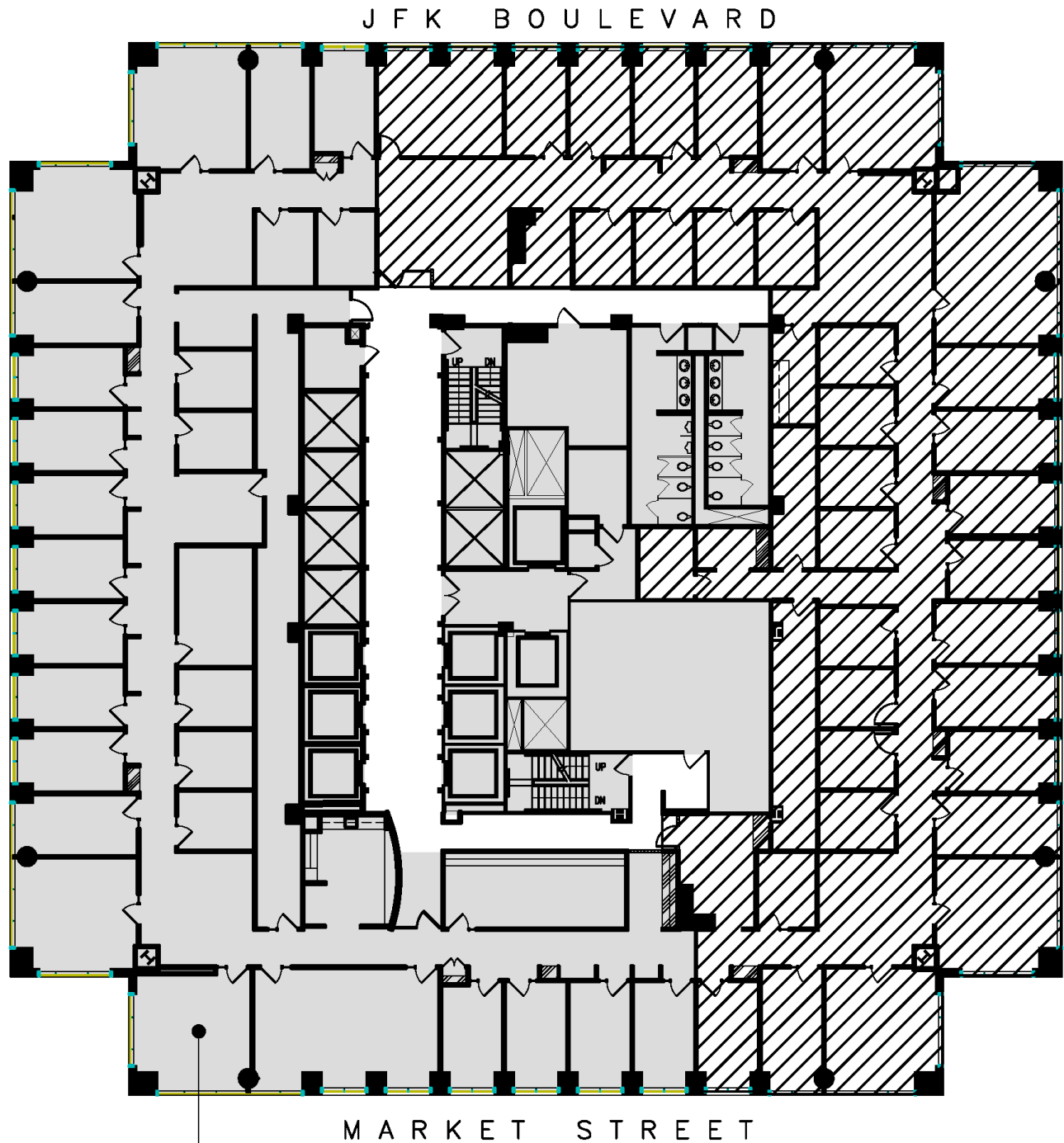
10,935 SF SUBLEASE SPACE AVAILABLE

1735 Market St., Philadelphia, PA



10,935 SF SUBLEASE SPACE AVAILABLE

1735 Market St., Philadelphia, PA



Sublease Premises
10,935 RSF