

# For Lease

**1435 W. CHURCH STREET**  
**Jacksonville, Florida 32204**  
Warehouse Storage – Urban Core West Submarket



- 6,700 sq.ft. Warehouse space **UNIT #5**
- Great Westside Urban Core Location
- (1) Dock High & (1) Grade Level Door
- Small Office
- **Unit #5 available now**
- Zoned IL
- 16' Ceiling Height
- Concrete Masonry Construction
- 34,000 sq.ft. total warehouse
- Land: 3.5 acres
- 

**Lease Rate: \$6.45 PSF**

**\$3,600. month gross**

For More Information:

Lauri Smith

(904) 356-2228

lsmith@escresults.com

## Easton, Sanderson & Company

**Industrial - Commercial R.E. Sales, Leasing & Management**

**300 E. State Street (Suite G) Jacksonville, FL. 32202**

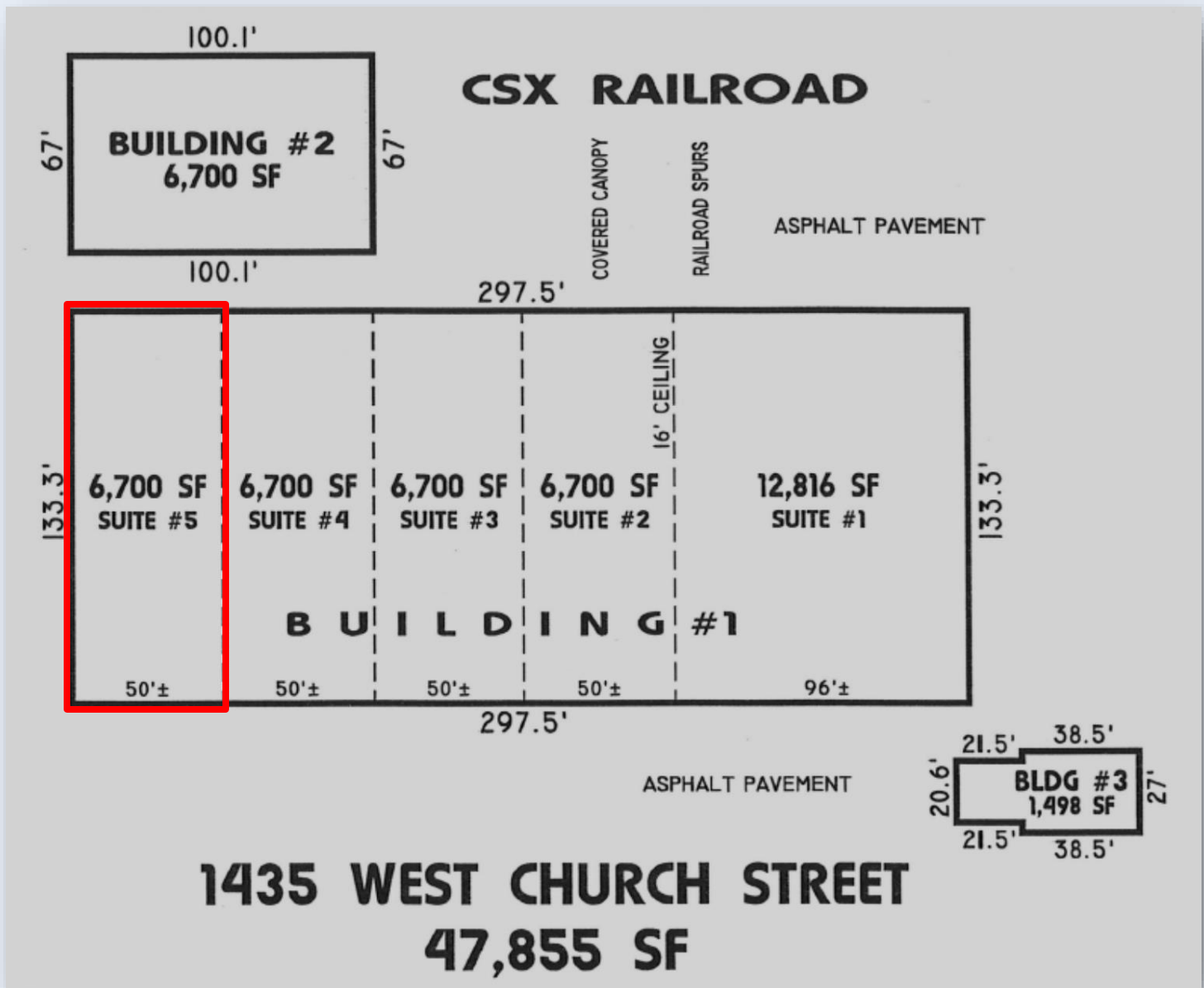
**www.escresults.com** Licensed Real Estate Brokers



# For Lease

**1435 W. CHURCH STREET  
Jacksonville, Florida 32204**

**Warehouse Storage – Urban Core West Submarket**



For More Information:

Lauri Smith

(904) 356-2228

lsmith@escresults.com

**Easton, Sanderson & Company**

**Industrial - Commercial R.E. Sales, Leasing & Management**

**300 E. State Street (Suite G) Jacksonville, FL. 32202**

**www.escresults.com** Licensed Real Estate Brokers





# For Lease

**1435 W. CHURCH STREET  
Jacksonville, Florida 32204**

**Warehouse Storage – Urban Core West Submarket**



For More Information:

Lauri Smith

(904) 356-2228

[lsmith@escresults.com](mailto:lsmith@escresults.com)

**Easton, Sanderson & Company**

**Industrial - Commercial R.E. Sales, Leasing & Management**

**300 E. State Street (Suite G) Jacksonville, FL. 32202**

[www.escresults.com](http://www.escresults.com) Licensed Real Estate Brokers

