



WINTER SPRINGS



13.01 Acre Land For Sale

Winter Springs, FL

\$2,000,000





Land Specifications

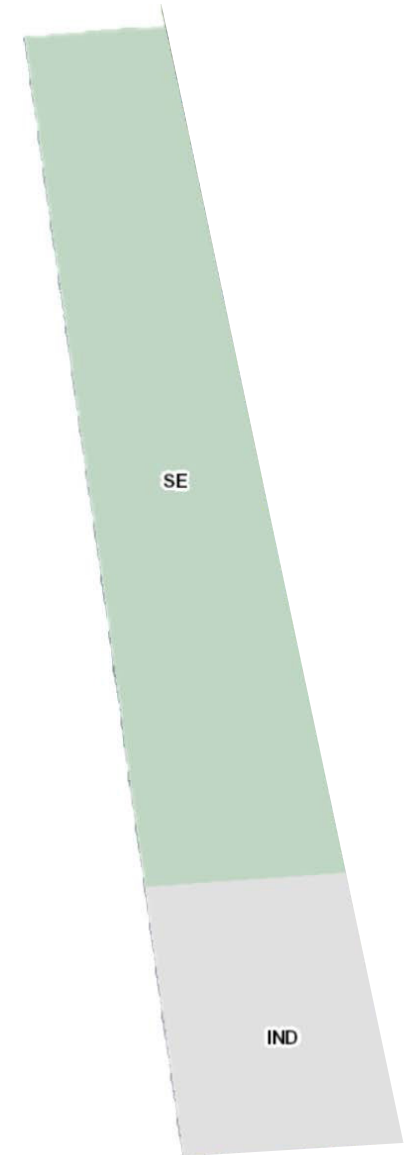
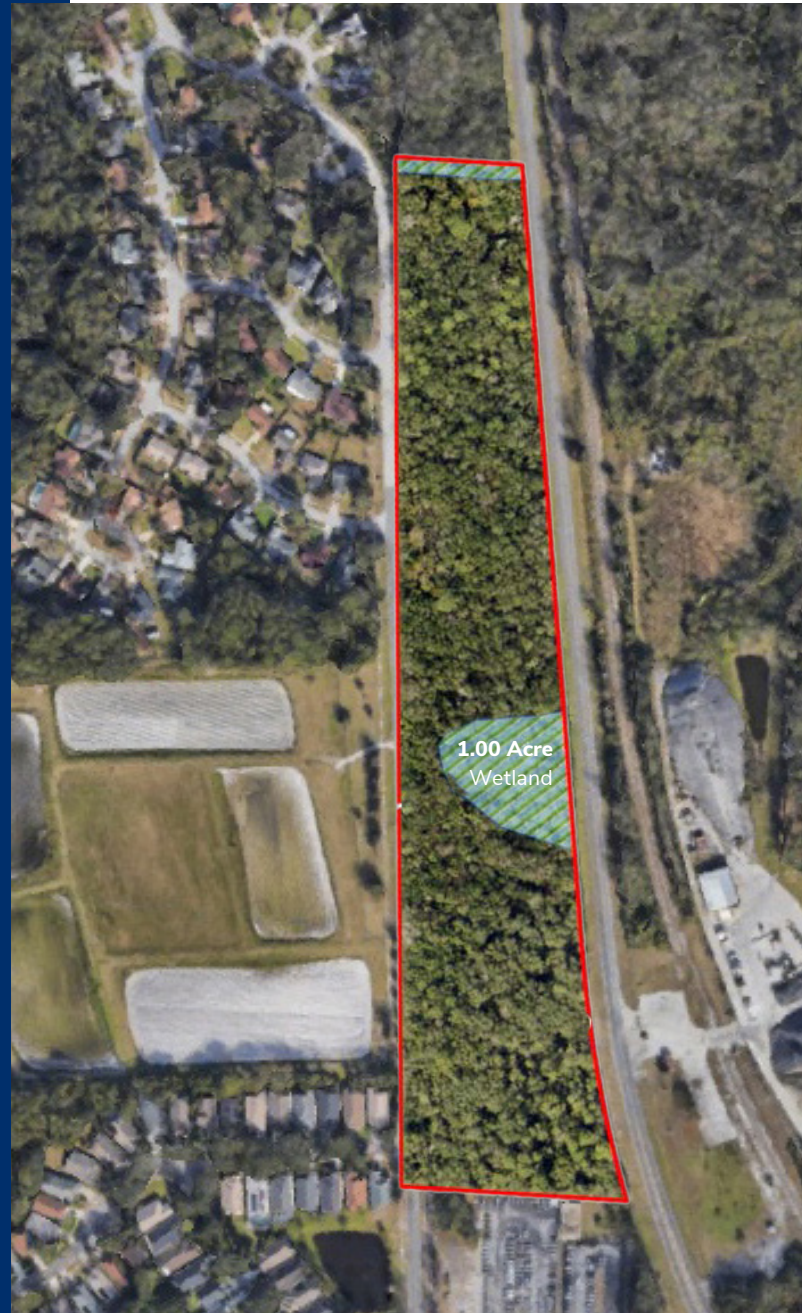
Sale Price
\$2,000,000

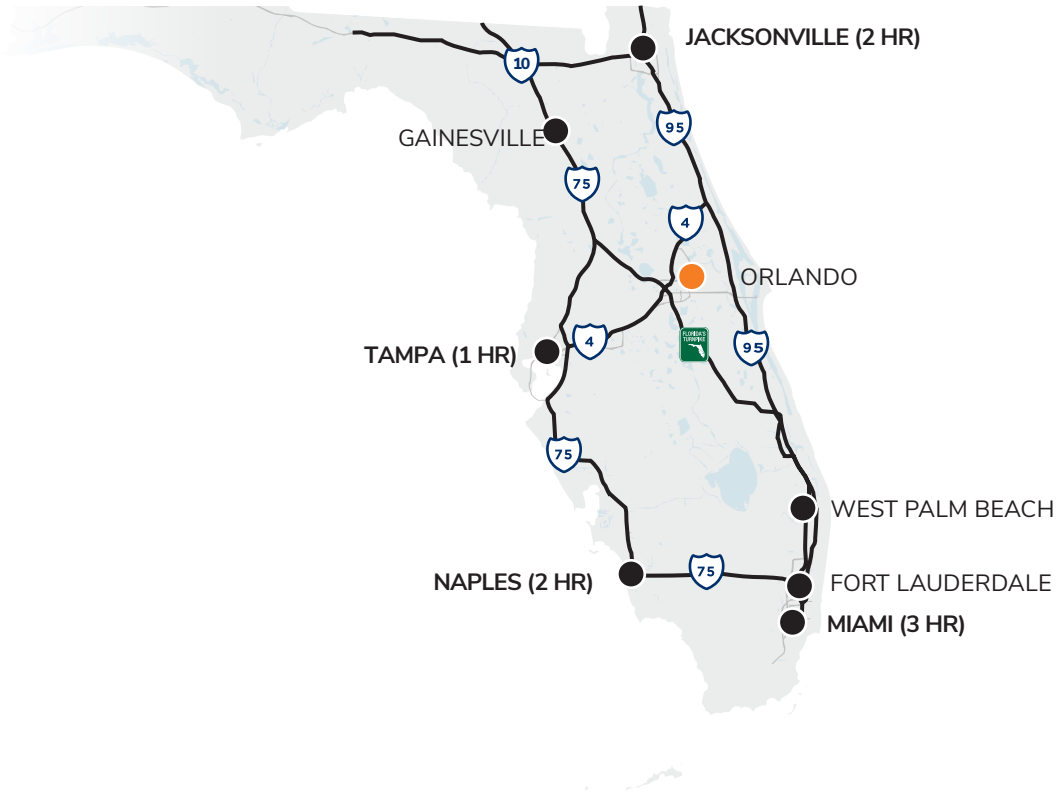
Type
Land

Available Land
+/-13.01 acres

Future Land Use
Suburban Estates &
Industrial

Location
Seminole County
Unincorporated





Airport

32 MILES FROM SITE



Highway Access

VIA 419 STREET



Traffic

15,600 CARS PER DAY STREET NAME

Key Distances To

Major Cities

Orlando	16 miles
Tampa	98 miles
Jacksonville	130 miles
Miami 250 miles	250 miles

Major Transportation Hubs

Orlando International Airport (MCO)	32 miles
Port Canaveral	75 miles

Major Arteries

Interstate 4 (I-4)	9 miles
17-92	2 miles
i-95	43 miles



Why Winter Springs?

Winter Springs has a diverse and growing workforce in the city and surrounding areas. The top industries include healthcare, education, retail, hospitality, and construction.

Significant employers in the area include AdventHealth, Seminole County Public Schools, and the City of Winter Springs.

Winter Springs has experienced significant growth in its suburban market in recent years, with new residential and commercial developments popping up throughout the city. This growth has led to an increase in job opportunities, particularly in the retail and hospitality sectors.

The Winter Springs Town Center, a mixed-use development that includes shops, restaurants, and offices, has been a significant catalyst for this growth, attracting new businesses and customers to the area.

With its attractive location, strong economy, and quality of life, Winter Springs is poised to continue its growth and attract new residents and businesses in the years to come.



Demographics

2022 ESTIMATED DEMOS	5-minute drive time	10-minute drive time	20-minute drive tme
TOTAL POPULATION	78,467	420,739	1,450,751
TOTAL HOUSEHOLDS	30,050	169,491	550,956
MEDIAN HOUSEHOLD INCOME	\$70,863	\$73,413	\$65,993
HOUSEHOLD INCOME 100K+	17.4%	15.8%	15.5%
MEDIAN HOME VALUE	\$277,582	\$299,840	\$284,085



Let's Connect

Darryl Hoffman

darryl.hoffman@streamrealty.com
T 407.204.1548

Jacob Attaway

jacob.attaway@streamrealty.com
T 407.204.9923

**Copyright © 2024 Stream Realty
Partners, All rights reserved.**

The information contained herein was obtained from sources believed reliable; however, Stream Realty Partners, L.P. make no guarantees, warranties, or representations as to the completeness or accuracy thereof. The presentation of this property is submitted subject to errors, change of price, or conditions, prior sale or lease, or withdrawal without notice.