

LANGSTON BLACK

REAL ESTATE, INC.

BANK / OFFICE SPACE FOR LEASE

400 MEMORIAL DRIVE EXT. @ HWY 29, GREER

8,810+- SF ON MAIN FLOOR
DRIVE UP TELLER WINDOW WITH 6 LANES

- FLOOR CAN BE SUBDIVIDED
- WALK-IN VAULT
- LARGE PARKING LOT
- STANDBY GENERATOR



MULTIPLE PROPERTY OWNERS ARE LICENSED REAL ESTATE AGENTS



PREVIOUSLY BB&T BRANCH
LEASE RATE: \$24/SF NNN

FOR MORE INFORMATION CONTACT
OWNER/AGENT CHUCK LANGSTON
AT 864-230-4302
clangston@langston-black.com

LANGSTON BLACK
REAL ESTATE, INC.

P.O. BOX 2167
GREER, S.C. 29652
BUS: 864-848-9070

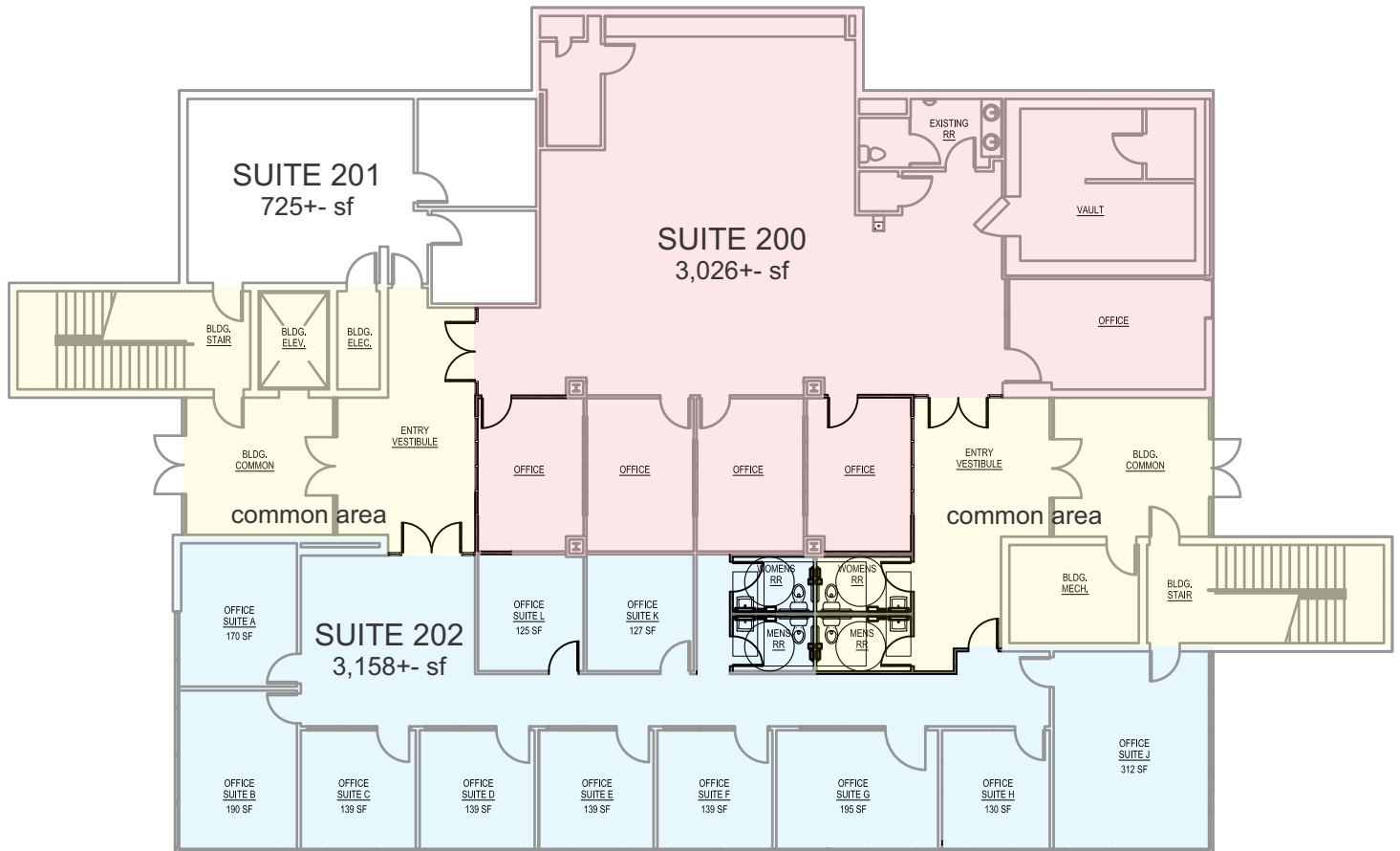
416

www.langston-black.com

Every effort has been made to ensure the accuracy of the enclosed data, but we assume no responsibility for errors. All conditions and pricing subject to change without notice.
(LANGSTON-BLACK SITE #416)



- SUITE 100 LEASED TO LANGSTON BLACK REAL ESTATE
- SUITE 300B LEASED TO OTB TAX
- SUITE 400 LEASED TO FAMILY DENTAL HEALTH





JUST BEHIND MCDONALDS WITH GREAT VISIBILITY FROM HWY 29



TAX MAP G018.00-05-007.05
ZONED CITY OF GREER C3