

RETAIL FOR LEASE

# 303 Park Avenue S

Park Avenue S between 23rd & 24th ST



**SIZE**

GF: 600 SF + Mezzanine



**COMMENTS**

Previously Verizon  
High Visibility Retail On Park Ave S  
Across from 1 Million SF Office  
Development Site "One Madison"  
All Uses Considered



**ASKING RENT**

Upon Request



**POSSESSION**

Immediately



**HAZ ALIESSA**

212.673.7333 X 107  
haz@towerbrokerage.com



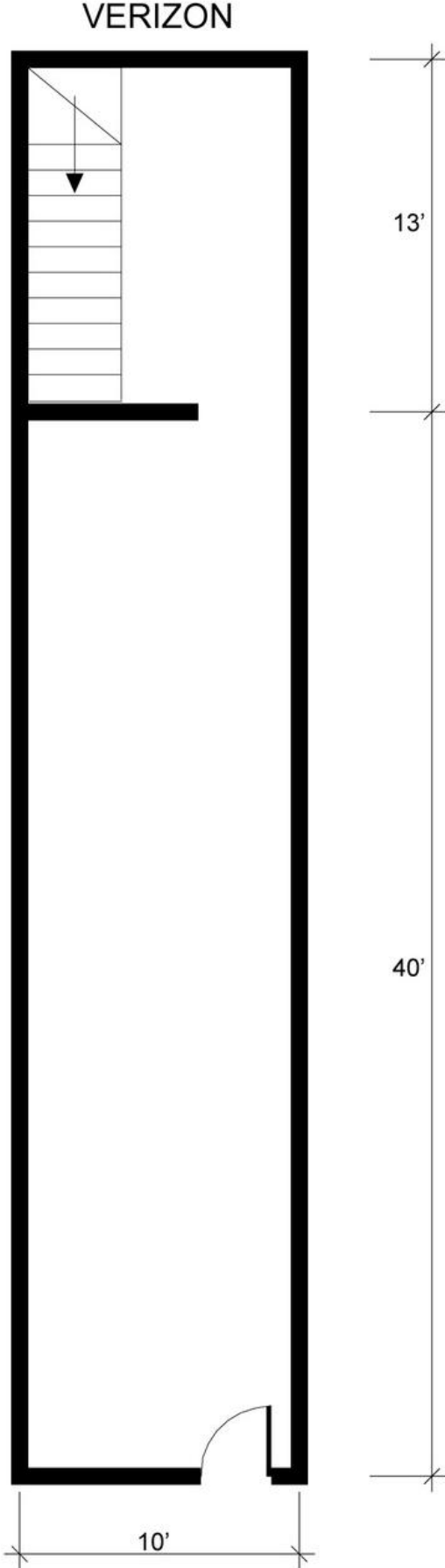
TOWER  
BROKERAGE

**KORY BARBANEL**

212.673.7333 X 105  
bkory@towerbrokerage.com

# 303 Park Ave S Verizon Floor Plans

**Ground Floor**



**Mezzanine**

