

TARLETON BUILDING

619 Madison St. Oregon City, OR 97045



FOR LEASE
\$14 SF/ Gross

Craig Gilbert

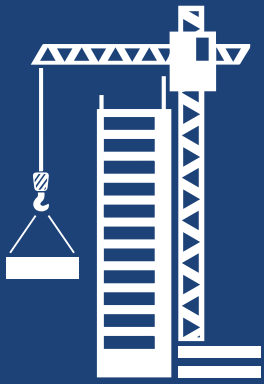
Principal Broker Licensed in OR
CGilbert@windermere.com
Direct: 503/313-8282



Portland Office

Office: 503-208-2538

2105 NE Cesar E Chavez Blvd. Suite 220 Portland, Oregon 97212



S

A

S
S

SF
SF



L

L

O

L

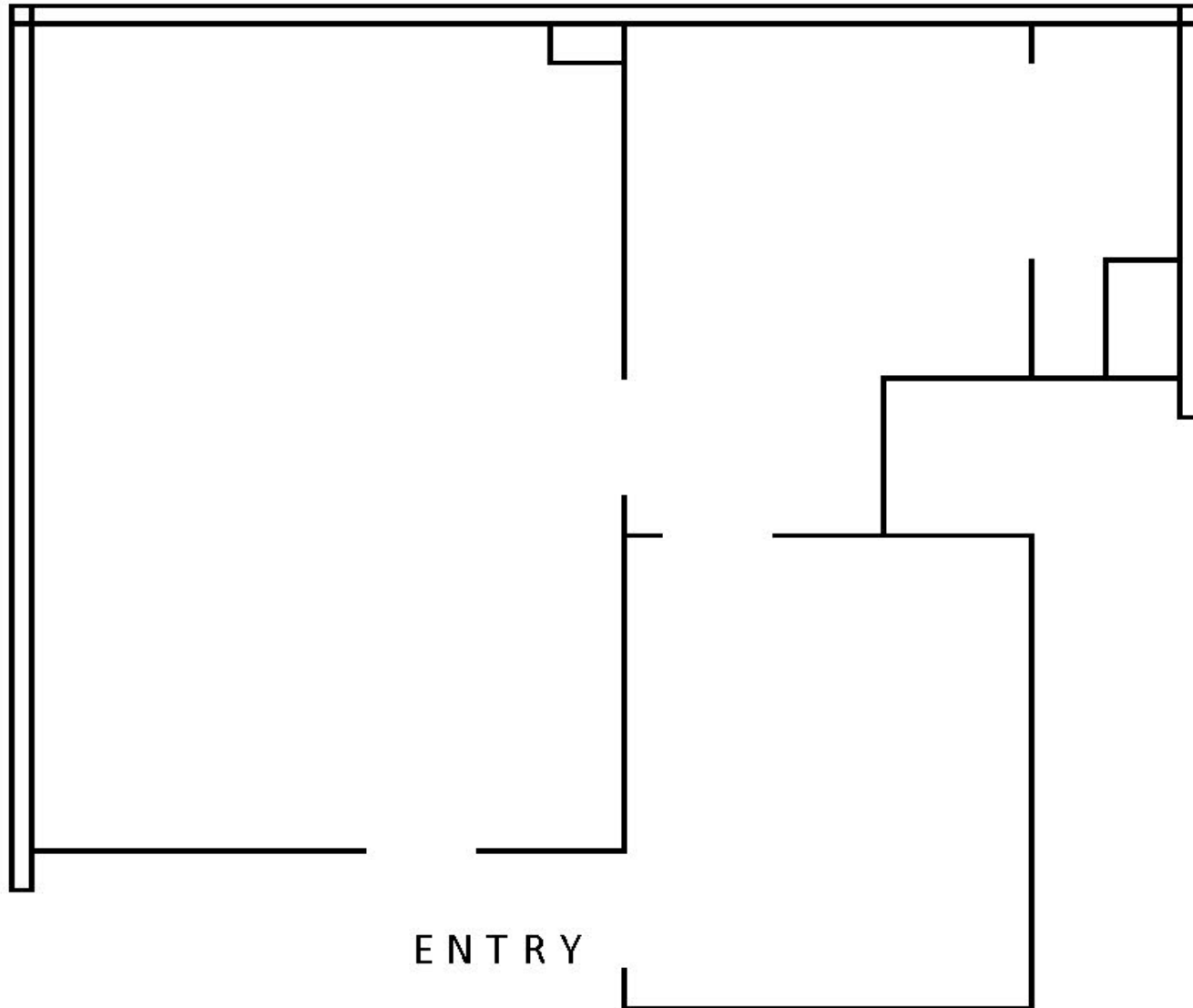
O

S

- ~ Flexible floor plans.
- ~ Off-street private parking.
- ~ Exterior signage opportunity
- ~ Tenant improvements negotiable.



SUITE 102 FLOOR PLAN - 714 SF

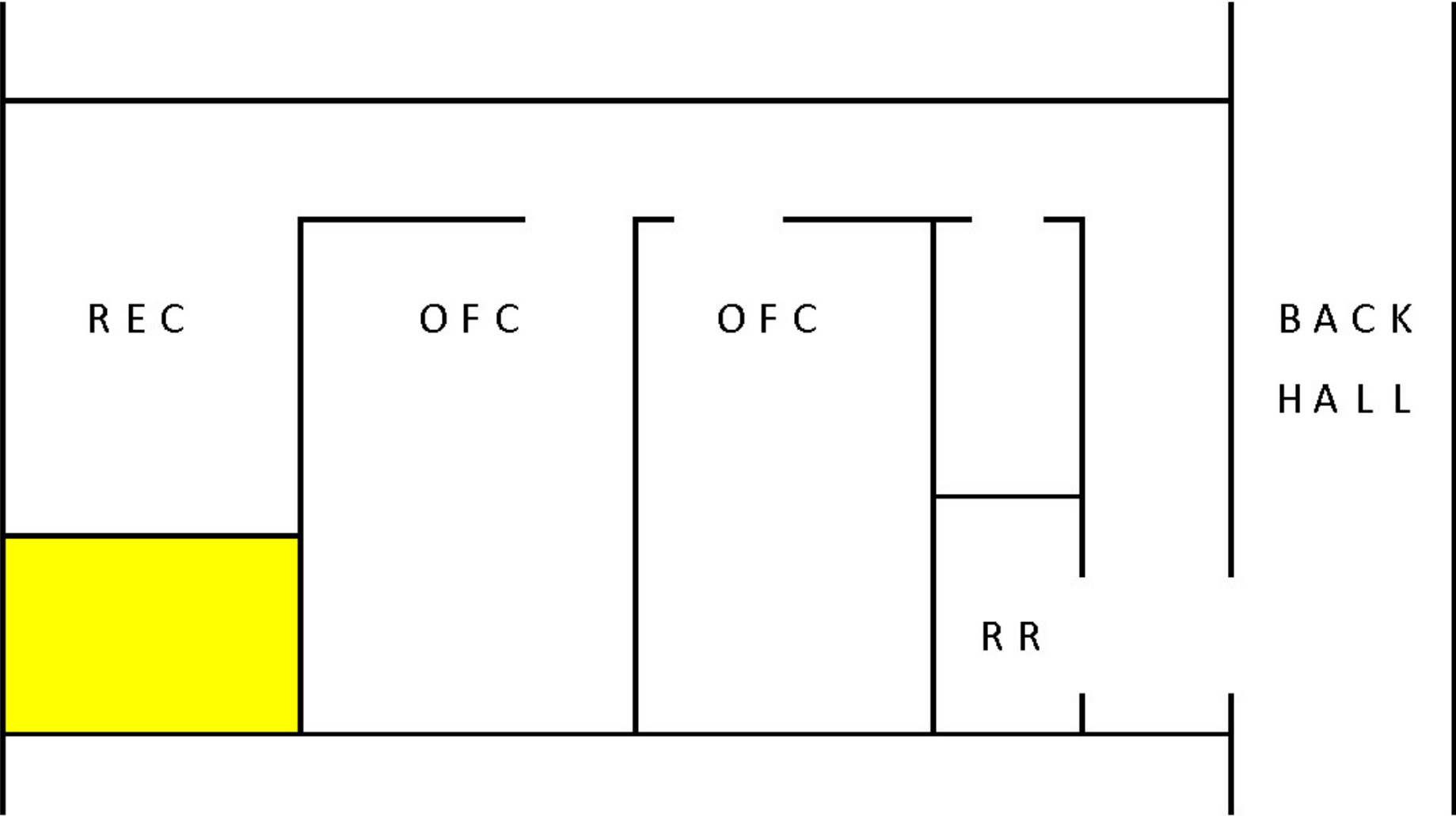


Portland Office

Office: 503-208-2538

2105 NE Cesar E Chavez Blvd. Suite 220 Portland, Oregon 97212

SUITE 106 FLOOR PLAN - 870 SF

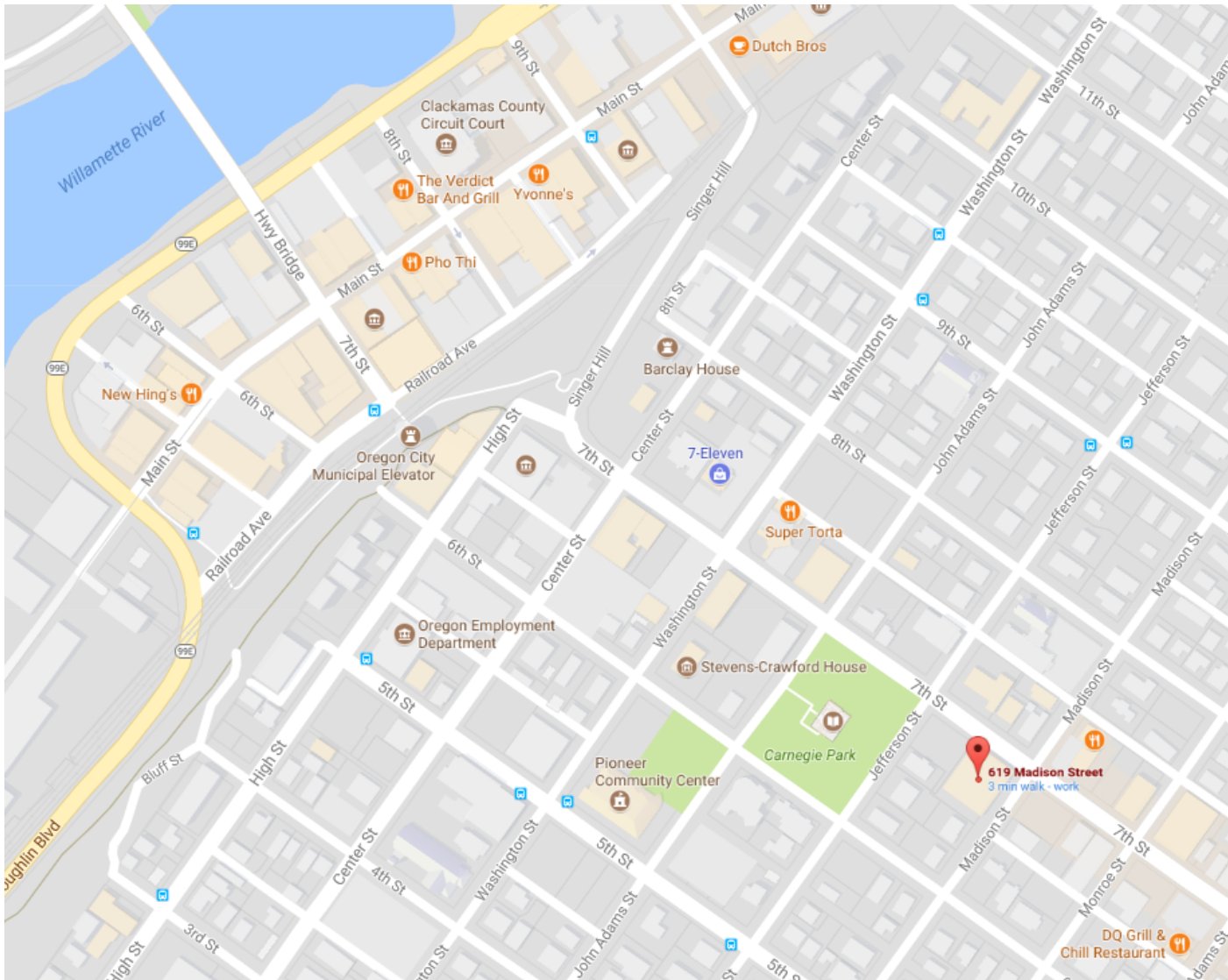


Portland Office

Office: 503-208-2538

2105 NE Cesar E Chavez Blvd. Suite 220 Portland, Oregon 97212

A R L A P O R A P S



There is approximately 37,000 Oregon City residents as of the latest census.

Median age is around 38, with a balanced mix of age groups.

Median household income is approximately \$75,000, reflecting a diverse economic landscape.

High percentage of residents hold a high school diploma or higher, with many pursuing higher education.

A mix of single-family homes and apartments, with a median home price around \$450,000.



Portland Office

Office: 503-208-2538

2105 NE Cesar E Chavez Blvd. Suite 220 Portland, Oregon 97212