

**FOR
LEASE**

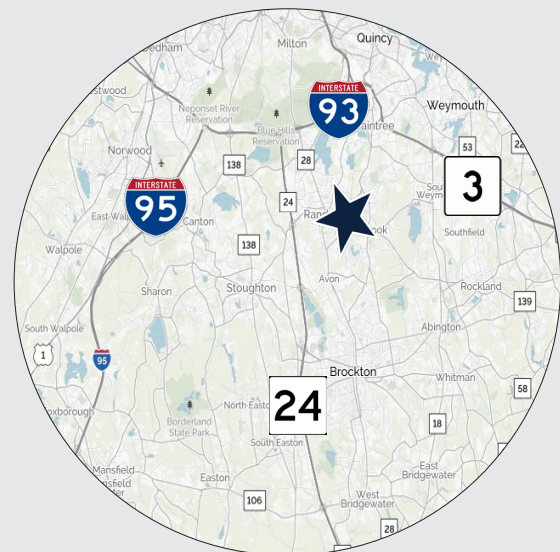
9-11 MEAR ROAD HOLBROOK, MA



WAREHOUSE/DISTRIBUTION BUILDING 147,040 SF ON 9.74 ACRES

» As exclusive agent, The Stubblebine Company is pleased to present 9-11 Mear Road, Holbrook, MA:

- 75,000 s.f distribution space available with eight (8) tailboard docks
- 18'-27'6" clear height
- Proximity to Rt. 24 and numerous amenities



EXCLUSIVE LISTING AGENT
THE STUBBLEBINE COMPANY
CORFAC INTERNATIONAL



PROPERTY SPECIFICATIONS

BUILDING SIZE	147,040 s.f.
SPACE AVAILABLE	Suite A: 75,000 s.f. total: 5,400 s.f. 1 st floor office, 5,400 s.f. 2 nd floor office, 64,200 s.f. warehouse
LAND	9.74 acres
CONSTRUCTION	Steel frame, metal panel
ROOF	Rubber membrane
CLEAR HEIGHT	18' (eaves) to 27'6"
COLUMN SPACING	59' x 19'
LOADING	Twenty-five (25) 8' x 10' tailboards
BUILT	1968 - front, 1981- rear expansion
POWER	A. 600 amps, B. 200 amps, C. 200 amps, D. 200 amps 120/2018 volt
UTILITIES	Gas: Bay State Gas, Electricity: National Grid, Sewer/Water: Town of Holbrook
SPRINKLER	100%
PARKING	Ample
HIGHWAY ACCESS	Located just off of Route 139
TAXES	\$114,115.92 (2016)
RENTAL RATE	Market



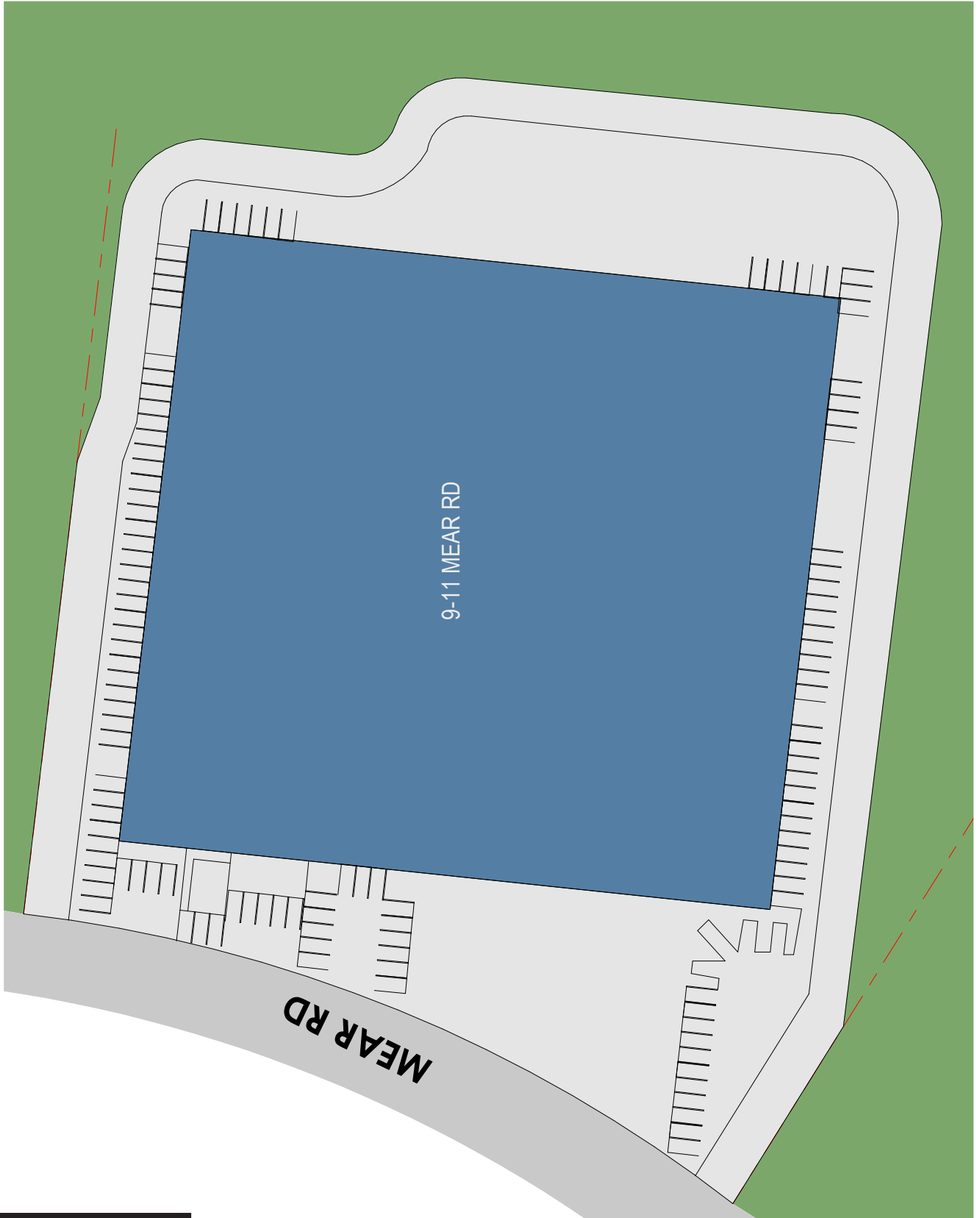
EXCLUSIVE LISTING AGENT

THE STUBBLEBINE COMPANY
CORFAC INTERNATIONAL

9-11

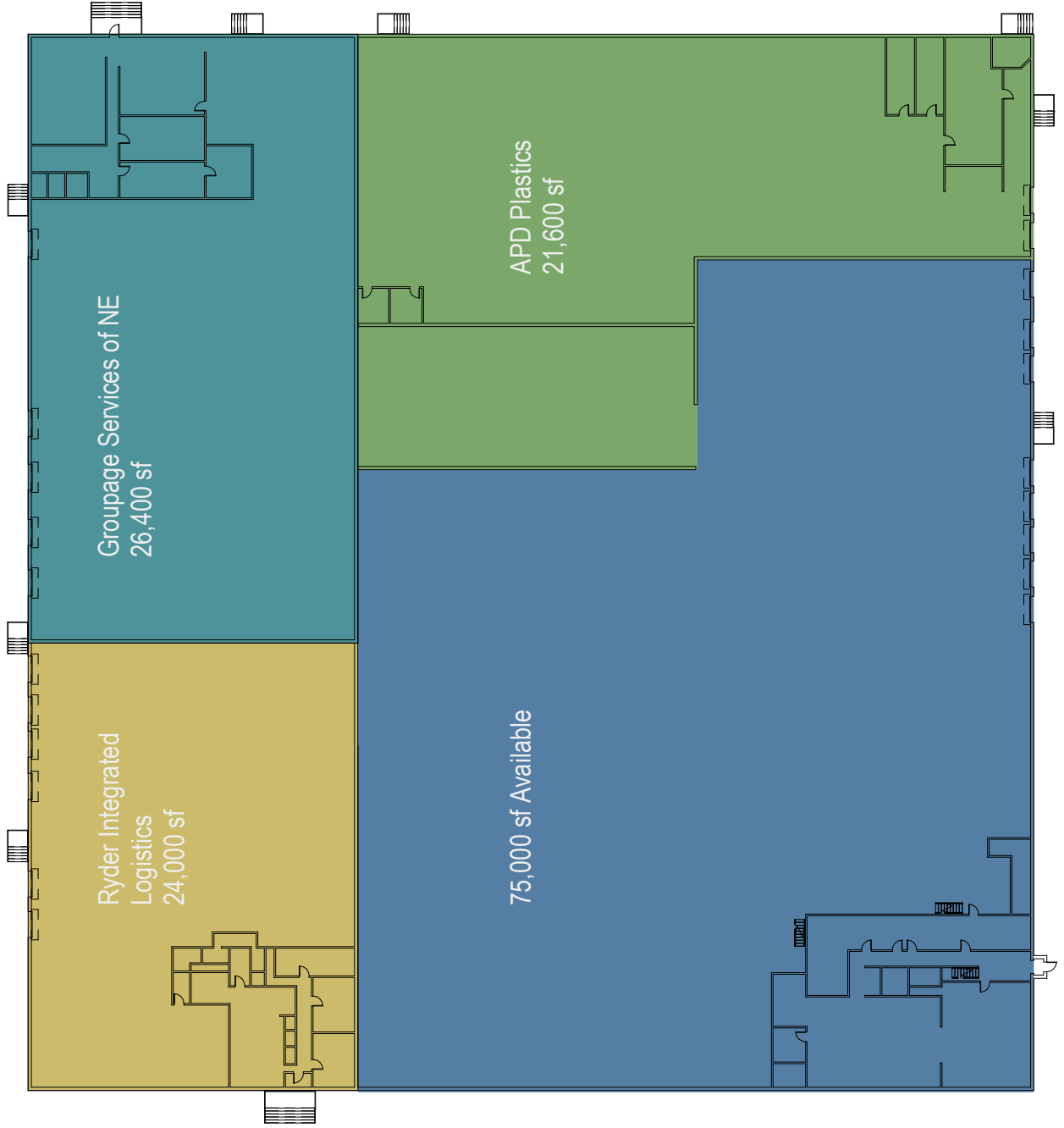
MEAR ROAD HOLBROOK, MA

SITE PLAN

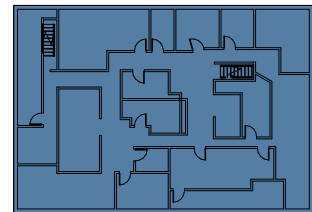


EXCLUSIVE LISTING AGENT
THE STUBBLEBINE COMPANY
CORFAC INTERNATIONAL

FLOOR PLAN



LEVEL 1



LEVEL 2



CORPORATE NEIGHBORS

Accurate Metal, LLC



EXCLUSIVE LISTING AGENT
THE STUBBLEBINE COMPANY
CORFAC INTERNATIONAL

TENANT OVERVIEWS**A.P.D. Plastics, Inc.**

APD Plastics, Inc. primarily operates in the Plastics Resins industry within the Wholesale Trade - Nondurable Goods sector. This organization has been operating for approximately 12 years. A.P.D. Plastics is estimated to generate \$500,000 in annual revenues, and employs approximately 2 people at this single location.



Ryder Integrated Logistics provides global supply chain consulting and services to our partners and their suppliers, including transportation management, integrated logistics, lead logistics management, carrier and shipment management, dedicated contract carriage, sequencing, kitting, component sub-assembly, consolidation/deconsolidation, warehousing, freight payment and audit, lineside delivery and material follow-up.

New England Groupage

Groupage Services Of New England LLC is a privately held company. This Freight Traffic Manager company was established in 2012.

Current estimates show this company has an annual revenue of 290,000 and employs a staff of approximately 3.



EXCLUSIVE LISTING AGENT

THE STUBBLEBINE COMPANY
CORFAC INTERNATIONAL

9-11

MEAR ROAD HOLBROOK, MA



EXCLUSIVE LISTING AGENT
 THE STUBBLEBINE COMPANY
 CORFAC INTERNATIONAL

CONTACT:

DAVID STUBBLEBINE 617-592-3391

JAMES STUBBLEBINE 617-592-3388

CHRIS MICHNIEWICZ 774-994-1698

JOB CLAYBURN 978-302-7205

Information contained herein was obtained from third parties, and it has not been independently verified by the real estate brokers. Buyers/tenants should have the option of inspecting the property to verify all information. Real estate brokers are not qualified to act as agents for or select experts with respect to legal, tax, environmental, building construction, soils/drainage or other such matters.

