

1020W MADISON

exclusively leased by

BA BRADFORD
ALLEN



1020 W. Madison Street, Chicago, IL 60607



1020W
MADISON

EXCLUSIVE FULTON MARKET SPACE ABOVE ACCLAIMED MONTEVERDE

1020 W. Madison offers boutique office/retail space in the heart of the Fulton Market. The full-floor suite features exposed brick, hardwood floors, natural light, and in-suite restrooms. Located directly above the acclaimed Monteverde Restaurant & Pastificio, the building offers tenants strong visibility, signage opportunities, and elevator identity. Just three blocks from the Morgan CTA, it's surrounded by top dining, retail, and residential amenities.

BA BRADFORD
ALLEN

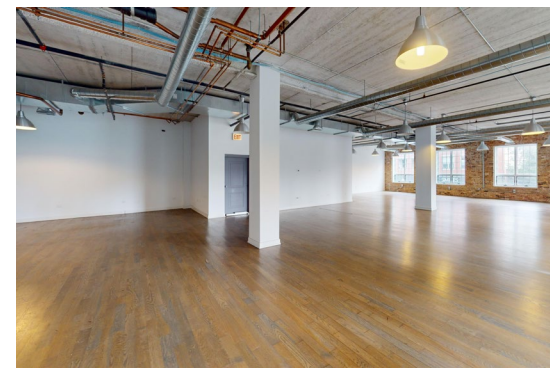
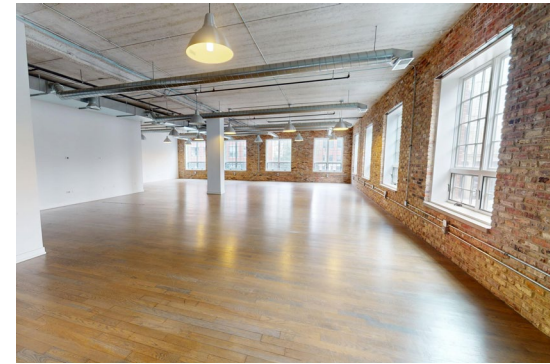
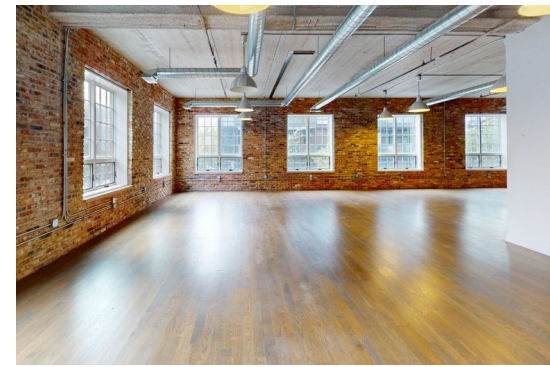
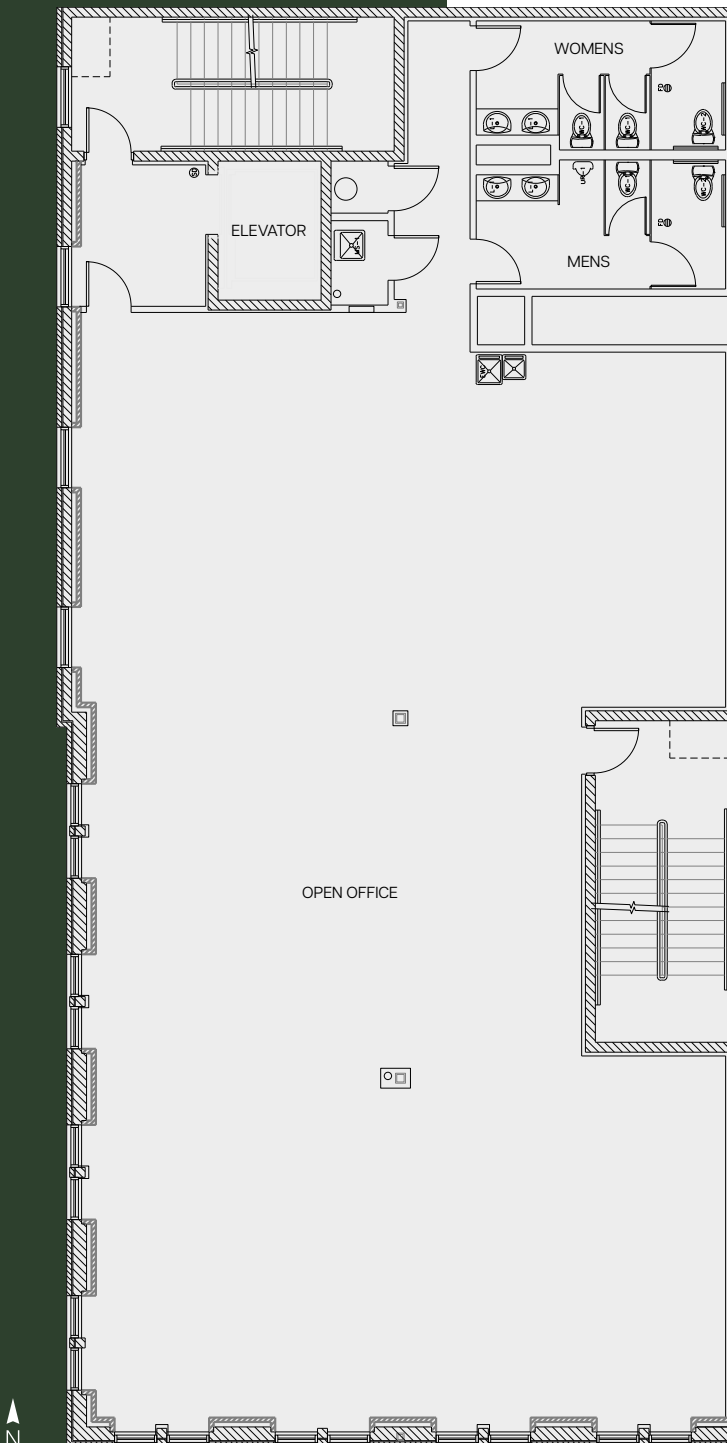
1020W MADISON

2ND FLOOR 4,500 SF

- Modern open space with exposed brick and hardwood floors
- Corner unit with abundant natural light
- Over 125' of windowlines overlooking Madison and Carpenter Streets
- Full floor with elevator identity
- Two in-suite restrooms

VIRTUAL TOUR

BA BRADFORD
ALLEN





1020W MADISON

AREA MAP

Just three blocks from the Morgan CTA Station, the area is surrounded by major firms including Google, McDonald's, WPP, TikTok, John Deere, Kimberly-Clark, Tock, Boston Consulting Group, and Mondelez, and is steps away from acclaimed restaurants, renowned galleries and showrooms, live entertainment, and rooftop cinemas.

4,500

Residential Units
(+ 4,000 proposed)

10 MILLION SF

Office Space
(Delivered, Under Construction, Planned)

\$152,339

Average Household Income
(1-mile radius)

34

Median Age
(1-mile radius)

62,384

Population
(1-mile radius)

1020W MADISON

For more information or to arrange a tour, please contact:

CRAIG NADBORNE

cnadborne@bradfordallen.com

(312) 994-5796

MICHAEL FLINCHBAUGH

mflinchbaugh@bradfordallen.com

(312) 741-8121

exclusively leased by

BA BRADFORD
ALLEN

1020 W. Madison Street, Chicago, IL 60607