

# 20 F STREET, NW

Washington, DC 20001

## Office For Lease

2,660 - 12,547 SF



Leasing Information:  
202.513.6700

**Merrill Turnbull**  
202.513.6713  
mturnbull@lpc.com

**Adam Biberaj**  
202.513.6736  
abiberaj@lpc.com

**Tim Whitebread**  
202.513.6712  
twhitebread@lpc.com

# Lincoln

Lincoln Property Company  
101 Constitution Avenue, NW Suite 325 East  
Washington, DC 20001

[www.lpc.com](http://www.lpc.com)

# 20 F STREET, NW

Washington, DC 20001

Office For Lease



## Property Highlights

- First class conference facility
- Roof terrace with Capitol views
- Tenant-Only fitness center
- On-site parking (1 / 1,656 SF)
- Immediate access to Union Station with 35 different restaurant options & numerous shopping amenities
- Walk to U.S. Capitol Building and Senate office buildings

## Availabilities

Availabilities	SF	Lease Rate	Date Available
Suite 350	6,600 SF	\$58.00 FS	Immediately
Spec Suite 410	5,361 SF	\$58.00 FS	Immediately
Suite 450	6,720 SF	\$62.00 FS	Immediately
Suite 600	12,547 SF	\$63.00 FS	Immediately
8C	2,660 SF	Negotiable	Immediately
8E	4,470 SF	Negotiable	Immediately

**Merrill Turnbull**

202.513.6713  
mturnbull@lpc.com

**Adam Biberaj**

202.513.6736  
abiberaj@lpc.com

**Tim Whitebread**

202.513.6712  
twhitebread@lpc.com

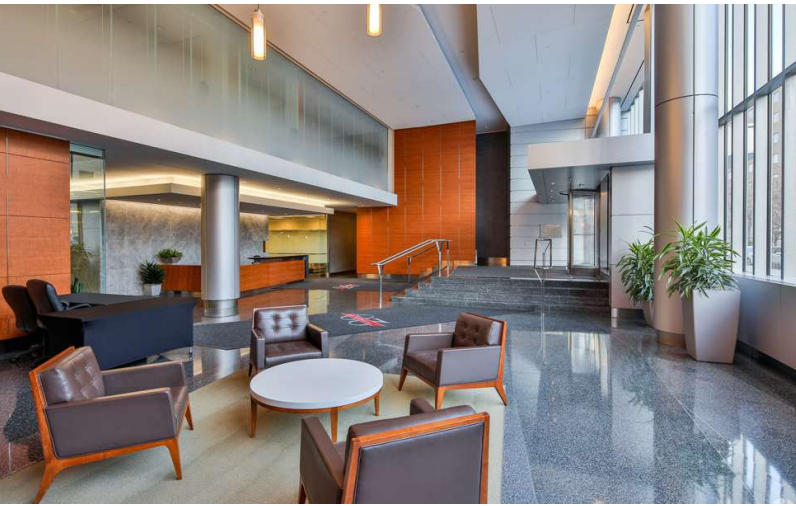
**Lincoln**



# 20 F STREET, NW

Washington, DC 20001

## Updated Lobby & Amenities



**Merrill Turnbull**

202.513.6713  
mturnbull@lpc.com

**Adam Biberaj**

202.513.6736  
abiberaj@lpc.com

**Tim Whitebread**

202.513.6712  
twhitebread@lpc.com

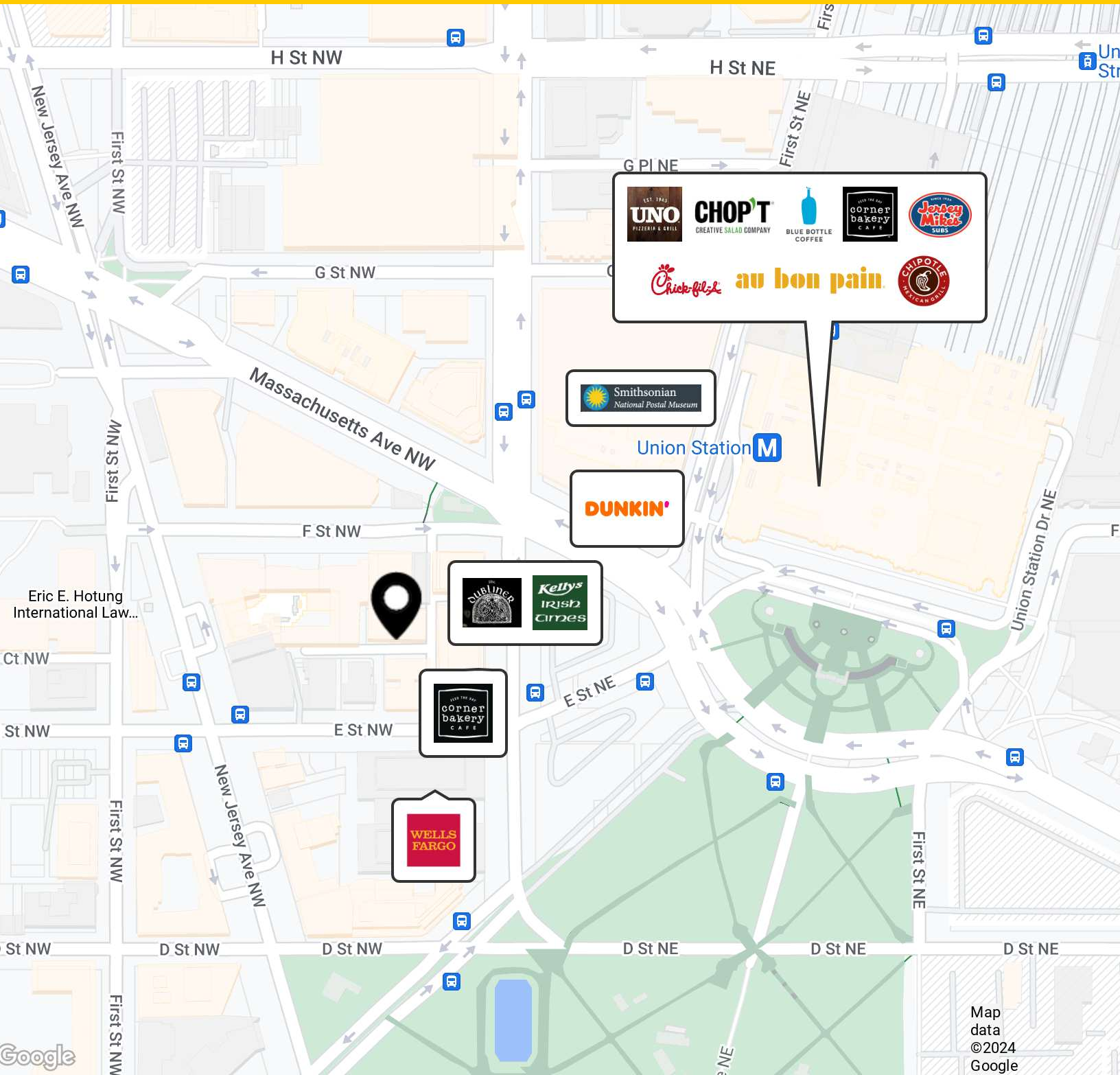
# Lincoln



# 20 F STREET, NW

## Nearby Retail

Washington, DC 20001



Merrill Turnbull

202.513.6713  
mturnbull@lpc.com

Adam Biberaj

202.513.6736  
abiberaj@lpc.com

Tim Whitebread

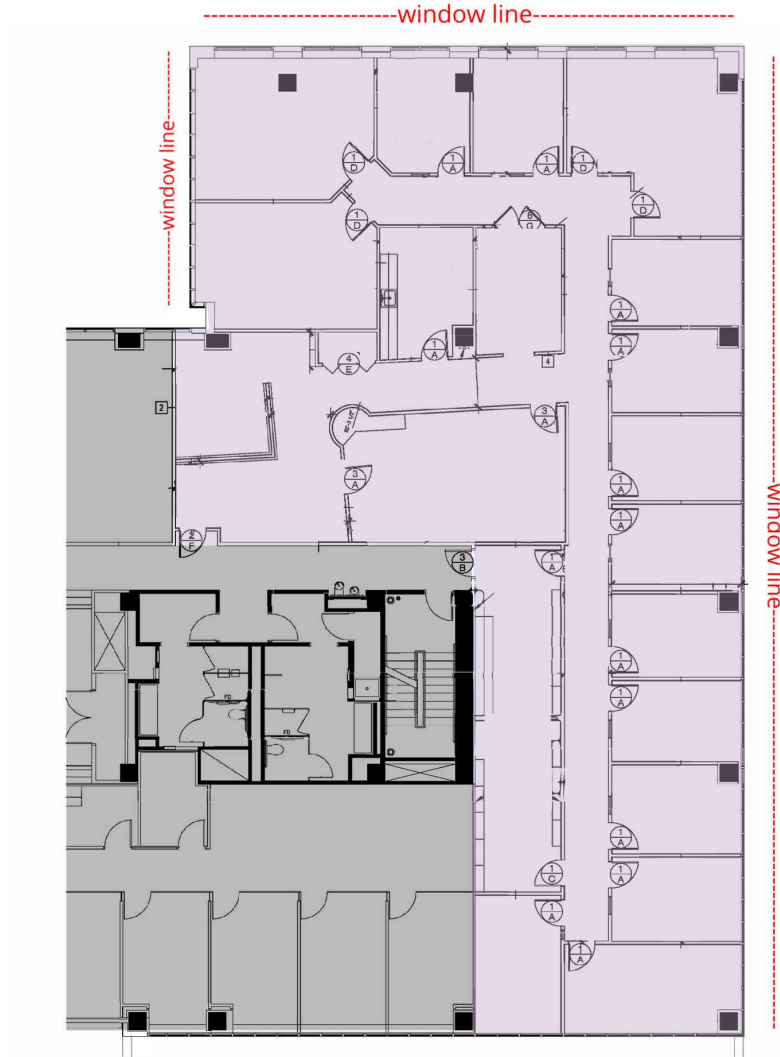
202.513.6712  
twhitebread@lpc.com

# Lincoln

# 20 F STREET, NW

Washington, DC 20001

Suite 350



Suite	Size	Lease Rate	Description
■ Suite 350	6,600 SF	\$58.00 FS	Available Immediately

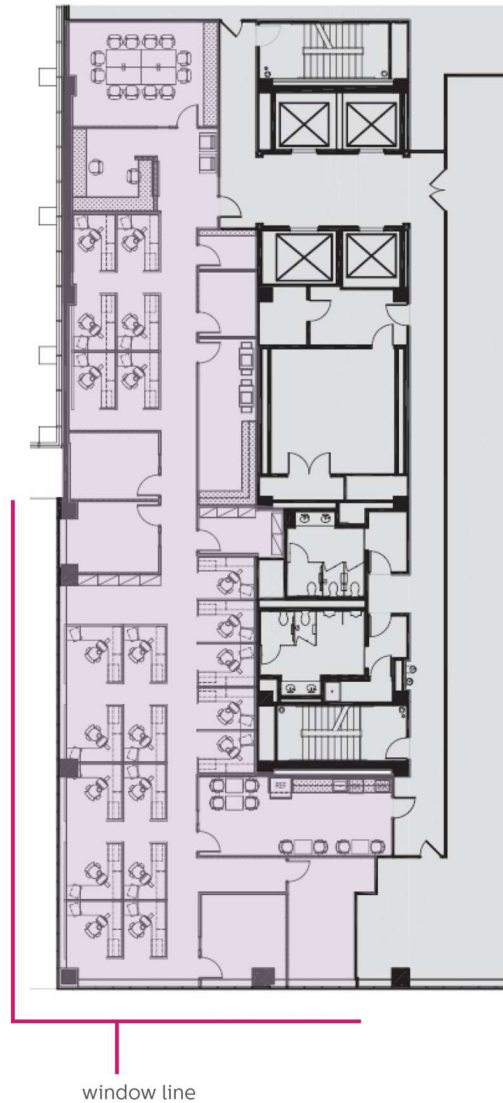
**Merrill Turnbull**   **Adam Biberaj**   **Tim Whitebread**  
202.513.6713   202.513.6736   202.513.6712  
mturnbull@lpc.com   abiberaj@lpc.com   twhitebread@lpc.com

## Lincoln

# 20 F STREET, NW

Washington, DC 20001

Spec Suite 410



Suite	Size	Lease Rate	Description
■ Spec Suite 410	5,361 SF	\$58.00 FS	Available Immediately

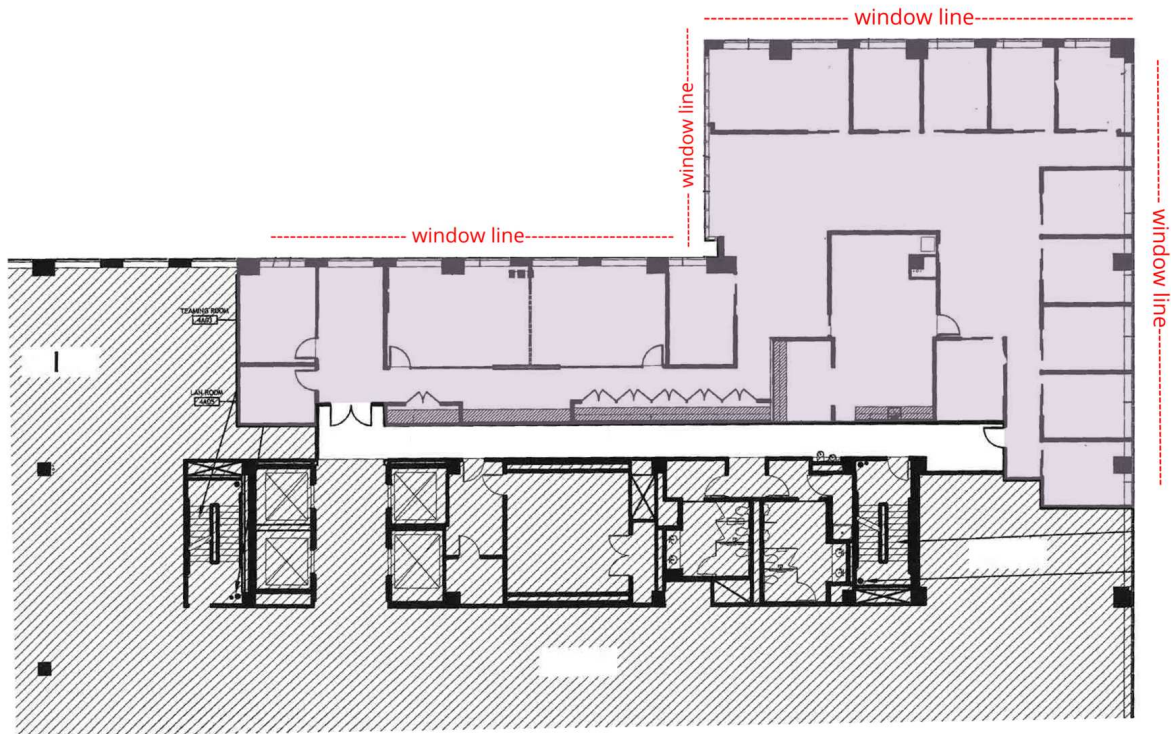
**Merrill Turnbull**   **Adam Biberaj**   **Tim Whitebread**  
202.513.6713   202.513.6736   202.513.6712  
mturnbull@lpc.com   abiberaj@lpc.com   twhitebread@lpc.com

**Lincoln**

# 20 F STREET, NW

Suite 450

Washington, DC 20001



Suite	Size	Lease Rate	Description
■ Suite 450	6,720 SF	\$62.00 FS	Available Immediately

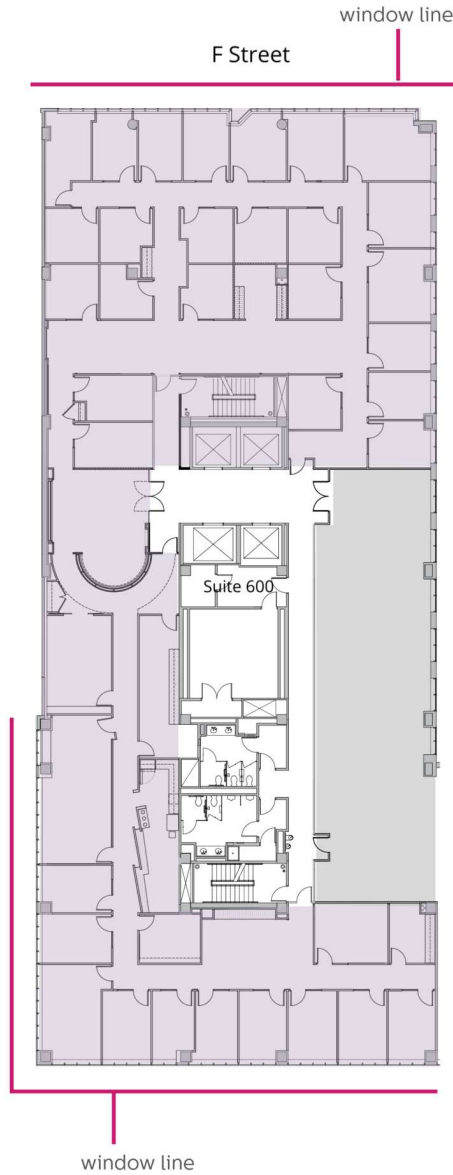
**Merrill Turnbull**   **Adam Biberaj**   **Tim Whitebread**  
202.513.6713   202.513.6736   202.513.6712  
mturnbull@lpc.com   abiberaj@lpc.com   twhitebread@lpc.com

## Lincoln

# 20 F STREET, NW

Washington, DC 20001

Suite 600



Suite	Size	Lease Rate	Description
■ Suite 600	12,547 SF	\$63.00 FS	Available Immediately

**Merrill Turnbull**   **Adam Biberaj**   **Tim Whitebread**  
202.513.6713   202.513.6736   202.513.6712  
mturnbull@lpc.com   abiberaj@lpc.com   twhitebread@lpc.com

## Lincoln





Suite	Size	Lease Rate	Description
■ 8C	2,660 SF	Negotiable	Spec Suite Available Immediately
■ 8E	4,470 SF	Negotiable	Spec Suite Available Immediately

**Merrill Turnbull**   **Adam Biberaj**   **Tim Whitebread**  
 202.513.6713   202.513.6736   202.513.6712  
 mturnbull@lpc.com   abiberaj@lpc.com   twhitebread@lpc.com

# Lincoln



# 20 F STREET, NW

Washington, DC 20001

Leasing Information:  
202.513.6700

**Merrill Turnbull**  
202.513.6713  
mturnbull@lpc.com

**Adam Biberaj**  
202.513.6736  
abiberaj@lpc.com

**Tim Whitebread**  
202.513.6712  
twhitebread@lpc.com

## Lincoln

Lincoln Property Company  
101 Constitution Avenue, NW Suite 325 East  
Washington, DC 20001

[www.lpc.com](http://www.lpc.com)