

CARLSBAD RESEARCH CENTER: 1,574 SF FOR LEASE

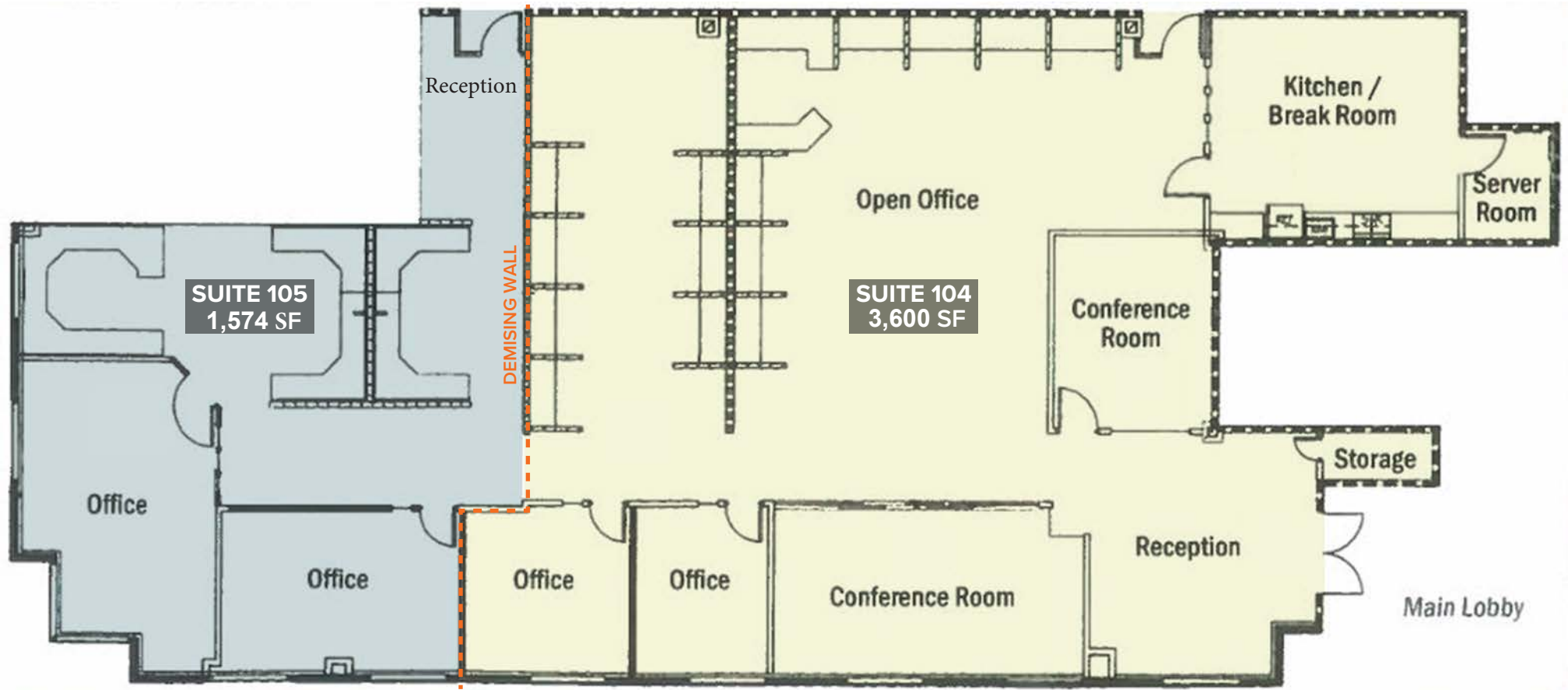
5927 BALFOUR COURT | SUITE 105
Carlsbad, CA 92008

Suite 105 = 1,574 SF



For more information, please contact:

David M. Steffy | 760.845.6307 | dsteffy@palomarcommercial.com | CA License 00902739



PROPERTY HIGHLIGHTS

- First floor suite
- Open floor plan with 2 private offices, large work areas, kitchen is potential as plumbing is available.
- Abundant natural light, LP privacy glass windows, auto door closures
- Restrooms have lockers & showers
- Easy access to Palomar Airport Road, El Camino Real & Interstate 5
- EV charging stations on premises
- **Lease Rate: \$2.25 psf + Utilities**