



# FARMINGTON STATION PARK SUBLEASE

## APPROX. 10,913 – 13,597 RSF FOR SUBLEASE

172 NORTH EAST PROMONTORY, #300, FARMINGTON, UT 84025





## OFFICES IN THE HEART OF THE FARMINGTON METRO

- 10,913–13,597 RSF available (flexibility on design)
- Incredible “tech” buildout
- Turnkey opportunity- furniture included
- Unbeatable, amenity-laden location at Station Park
- 2nd floor location with east mountain views
- Shared and/or private break area plans
- Shared or private lobby signage/reception available
- Lease expiration: May 31, 2028



**\$28.95/SF**  
**FULL SERVICE**

**CLASS A**  
**PROFESSIONAL FINISHES**  
**THROUGHOUT THE SUITE**

**IMMEDIATE**  
**ACCESS TO I-15, HWY 89 &**  
**LEGACY PARKWAY**

**ABOVE GRADE**  
**FINISHES THROUGHOUT**

**GENEROUS**  
**DAYTIME PARKING**

**FRONT RUNNER**  
**FARMINGTON STATION STOP LOCATED**  
**ACROSS THE PARKING LOT**

**UNMATCHED**  
**ACCESSIBILITY TO MANY AMENITIES**  
**WITHIN WALKING DISTANCE**



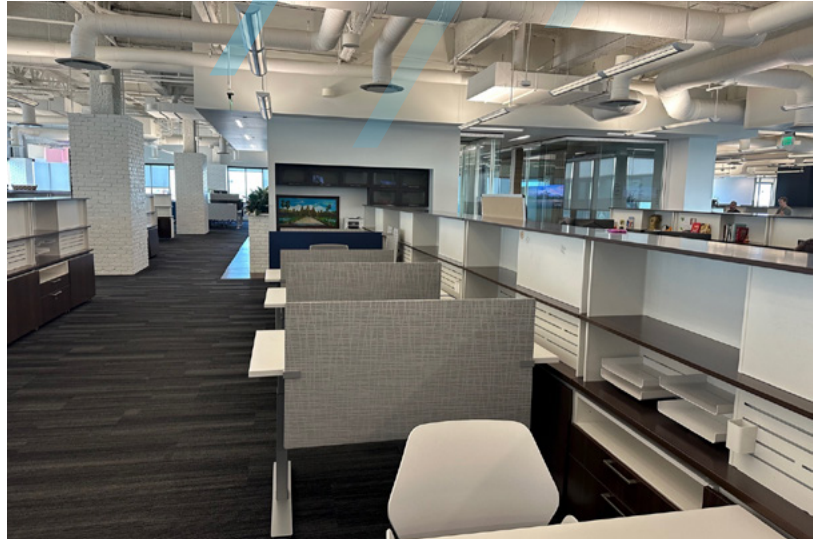
**CHRIS FALK, CCIM, SIOR**  
cfalk@newmarkmw.com  
direct 801.499.6514  
[View Profile](#)

**BRAXTON WILLIE, CCIM**  
bwillie@newmarkmw.com  
direct 801.803.3334  
[View Profile](#)

**FULL SERVICE**  
**COMMERCIAL REAL ESTATE**  
1410 S University Park Blvd, Ste 120  
Clearfield, Utah 84015  
Office 801.578.5580  
[www.newmarkmw.com](http://www.newmarkmw.com)



# INTERIOR PHOTOS



**NEWMARK**  
MOUNTAIN WEST

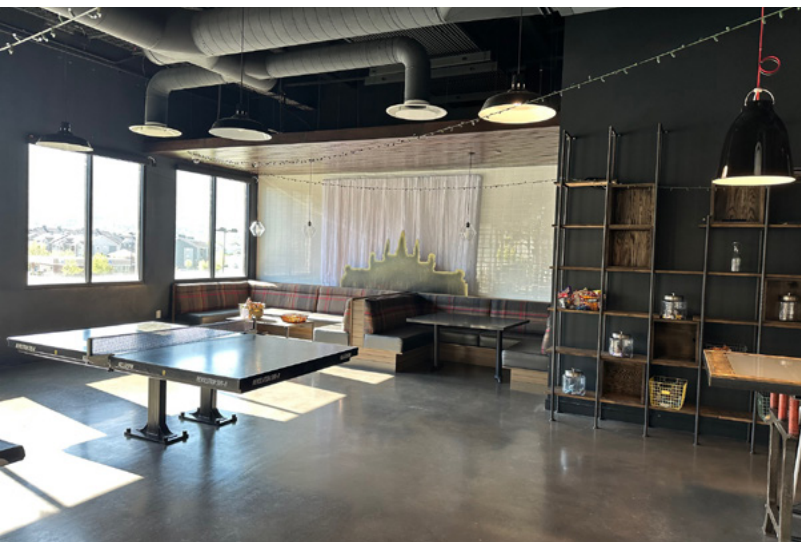
**CHRIS FALK, CCIM, SIOR**  
cfalk@newmarkmw.com  
direct 801.499.6514  
[View Profile](#)

**BRAXTON WILLIE, CCIM**  
bwillie@newmarkmw.com  
direct 801.803.3334  
[View Profile](#)

**FULL SERVICE  
COMMERCIAL REAL ESTATE**  
1410 S University Park Blvd, Ste 120  
Clearfield, Utah 84015  
Office 801.578.5580  
[www.newmarkmw.com](http://www.newmarkmw.com)



# INTERIOR PHOTOS



**NEWMARK**  
MOUNTAIN WEST

**CHRIS FALK, CCIM, SIOR**  
cfalk@newmarkmw.com  
direct 801.499.6514  
[View Profile](#)

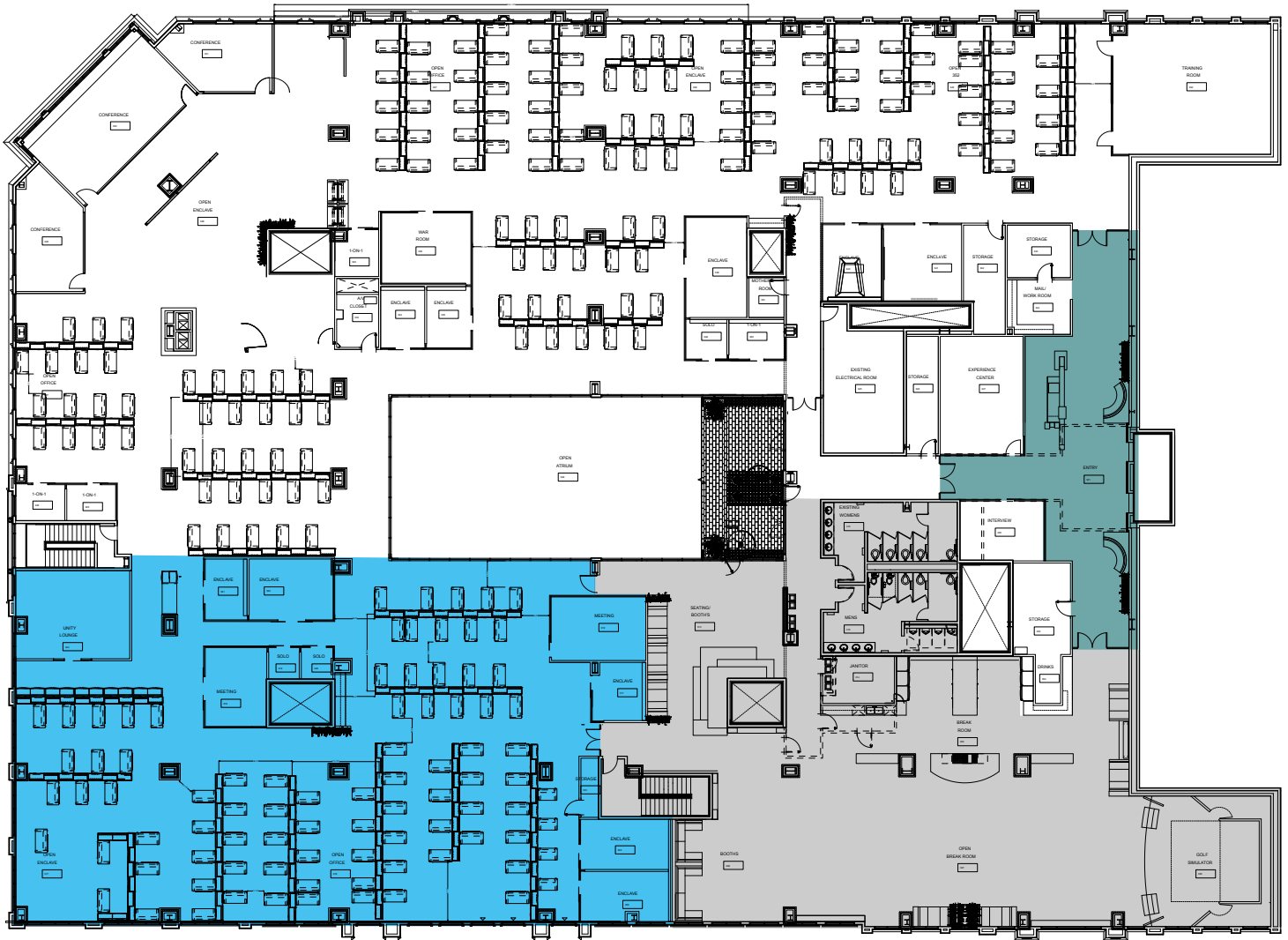
**BRAXTON WILLIE, CCIM**  
bwillie@newmarkmw.com  
direct 801.803.3334  
[View Profile](#)

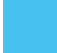


**FULL SERVICE  
COMMERCIAL REAL ESTATE**  
1410 S University Park Blvd, Ste 120  
Clearfield, Utah 84015  
Office 801.578.5580  
[www.newmarkmw.com](http://www.newmarkmw.com)



# FLOOR PLAN OPTION 1

APPROX. 10,913 RSF- INCLUDES SHARED BREAKROOM



-  Available
-  Shared Collaborative/Break Area
-  Potential Shared Reception



**CHRIS FALK, CCIM, SIOR**  
cfalk@newmarkmw.com  
direct 801.499.6514  
[View Profile](#)

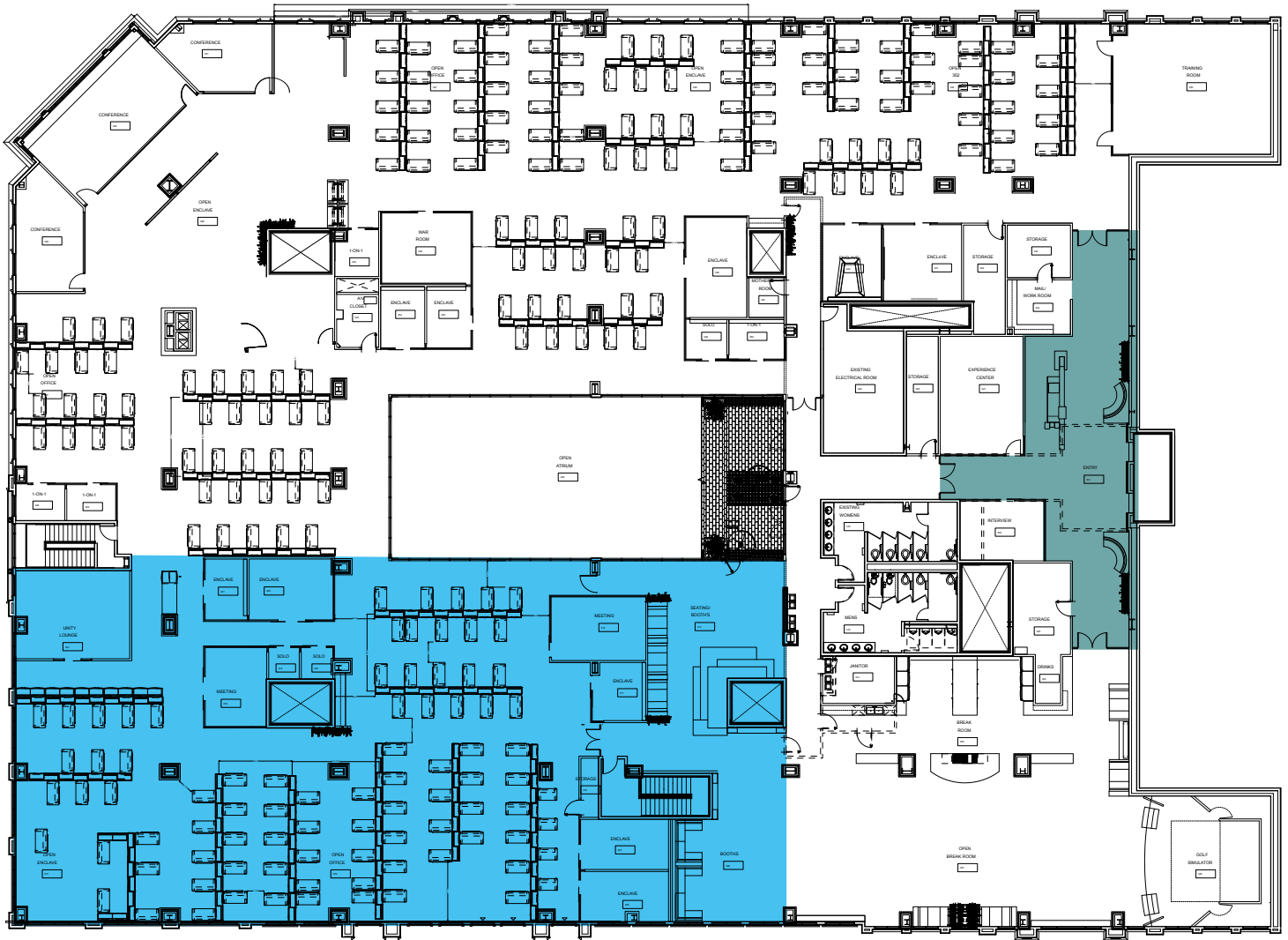
**BRAXTON WILLIE, CCIM**  
bwillie@newmarkmw.com  
direct 801.803.3334  
[View Profile](#)

**FULL SERVICE  
COMMERCIAL REAL ESTATE**  
1410 S University Park Blvd, Ste 120  
Clearfield, Utah 84015  
Office 801.578.5580  
[www.newmarkmw.com](http://www.newmarkmw.com)



# FLOOR PLAN OPTION 2

APPROX. 13,597 RSF- INCLUDES PRIVATE BREAKROOM



Available

Potential Shared Reception



**CHRIS FALK, CCIM, SIOR**  
cfalk@newmarkmw.com  
direct 801.499.6514  
[View Profile](#)

**BRAXTON WILLIE, CCIM**  
bwillie@newmarkmw.com  
direct 801.803.3334  
[View Profile](#)

**FULL SERVICE  
COMMERCIAL REAL ESTATE**  
1410 S University Park Blvd, Ste 120  
Clearfield, Utah 84015  
Office 801.578.5580  
[www.newmarkmw.com](http://www.newmarkmw.com)



# DISCOVER STATION PARK



**1.2M+**  
Square Feet



**140+**  
Retailers



**2011**  
Opened



**9.1M**  
Annual Visits

**STATION PARK** is a popular mixed-use lifestyle and shopping center located in Farmington, Utah. It serves as a community hub for retail, dining, entertainment and business. It is conveniently located at the crossroads of I-15, Highway 89 and Legacy Parkway, making it highly accessible from nearby cities. Station Park is adjacent to the Farmington FrontRunner Station, making the center easily accessible by public transportation.

## RETAILERS









# NEWMARK

## MOUNTAIN WEST



**CHRIS FALK, CCIM, SIOR**  
cfalk@newmarkmw.com  
direct 801.499.6514  
[View Profile](#)

**BRAXTON WILLIE, CCIM**  
bwillie@newmarkmw.com  
direct 801.803.3334  
[View Profile](#)

**FULL SERVICE  
COMMERCIAL REAL ESTATE**  
1410 S University Park Blvd, Ste 120  
Clearfield, Utah 84015  
Office 801.578.5580  
[www.newmarkmw.com](http://www.newmarkmw.com)