

LAND PROPERTY // FOR SALE

LAND FOR DEVELOPMENT MILWAUKEE JUNCTION IS ON FIRE!

547 HARPER AVE
DETROIT, MI 48202



- 0.94-acre lot for multi-family or industrial development
- Adjacent land from Detroit Land Bank available for purchase
- The site can be expanded to include most of the city block
- New development surrounds property including an EV Battery Plant, 400-Unit Mixed-development, 161-Unit Loft, and new HQ for Detroit PBS
- High-visibility from I-94 and I-75
- Walkable neighborhood with many restaurants and bars



P.A. COMMERCIAL
Corporate & Investment Real Estate

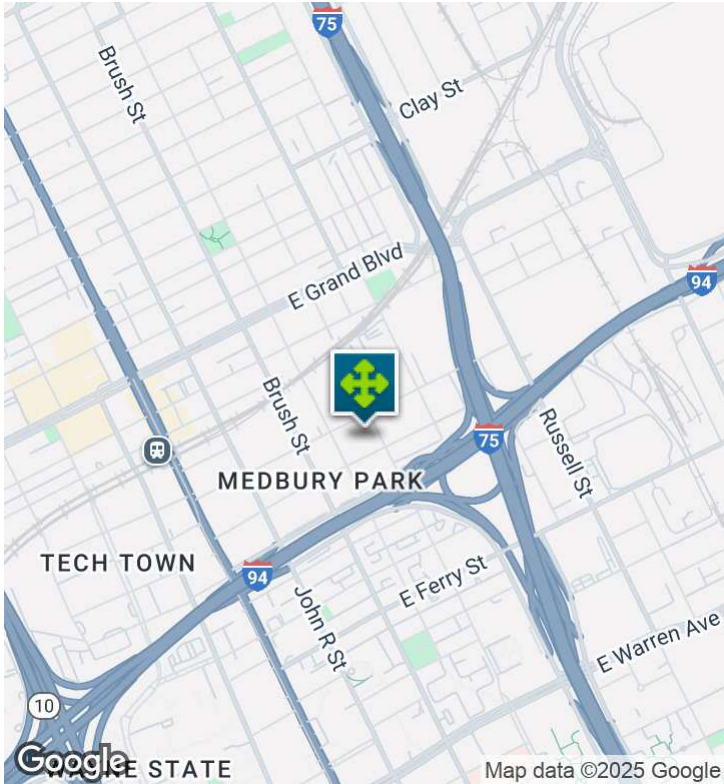
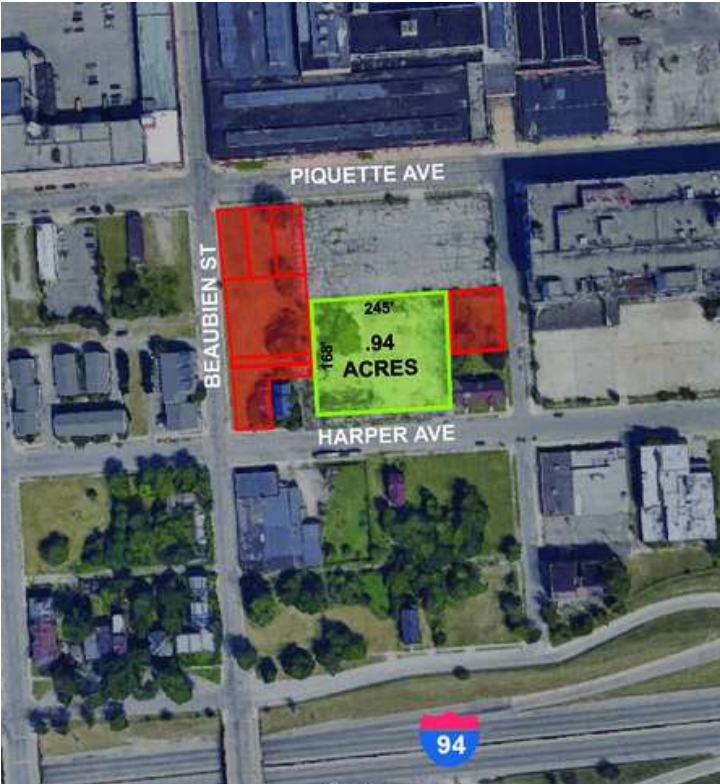
26555 Evergreen Road, Suite 1500
Southfield, MI 48076
248.358.0100
pacommercial.com

We obtained the information above from sources we believe to be reliable. However, we have not verified its accuracy and make no guarantee, warranty or representation about it. It is submitted subject to the possibility of errors, omissions, change of price, rental or other conditions, prior sale, lease or financing, or withdrawal without notice. We include projections, opinions, assumptions or estimates for example only, and they may not represent current, past or future performance of the property. You and your tax and legal advisors should conduct your own investigation of the property and transaction.

547 HARPER AVE, DETROIT, MI 48202 // FOR SALE

EXECUTIVE SUMMARY

SUBJECT



Sale Price	\$1,000,000
------------	-------------

OFFERING SUMMARY

Lot Size:	0.94 Acres
Price / Acre:	\$1,063,830
Zoning:	Commercial
Market:	Detroit
Submarket:	Detroit-New Center
Traffic Count:	147,000

PROPERTY OVERVIEW

Unlock the potential of this prime 0.94-acre property in the heart of Milwaukee Junction, Detroit's hottest-growing neighborhood! Zoned for commercial use and strategically situated within the dynamic Detroit area, this expansive property offers an exceptional investment opportunity. With the option to expand the site by acquiring adjacent land from the Detroit Land Bank and its favorable proximity to major highways I-75 and I-94, this location offers unparalleled flexibility and convenience. Boasting a vibrant, walkable neighborhood featuring an array of restaurants and bars, as well as easy access to the QLINE streetcar system, this property is primed for lucrative development. Benefit from city and state incentives while seizing the potential of this strategically positioned investment opportunity.

LOCATION OVERVIEW

Boasting a vibrant arts and culture scene, top-tier educational institutions, close proximity to major medical centers, and at the crosshair of I-75 and I-94, this area offers a compelling narrative for developers. This historic neighborhood has seen a resurgence of interest and investment, leading to various adaptive reuse projects aimed at transforming old industrial buildings into offices, residential lofts, retail spaces, and artist studios. This preservation of historic architecture not only adds character to the neighborhood but also attracts businesses and residents looking for unique spaces.



P.A. COMMERCIAL
Corporate & Investment Real Estate



SUBJECT

Levi Smith, JD SENIOR ASSOCIATE
D: 248.331.0205 | C:
levi@pacommercial.com

We obtained the information above from sources we believe to be reliable. However, we have not verified its accuracy and make no guarantee, warranty or representation about it. It is submitted subject to the possibility of errors, omissions, change of price, rental or other conditions, prior sale, lease or financing, or withdrawal without notice. We include projections, opinions, assumptions or estimates for example only, and they may not represent current, past or future performance of the property. You and your tax and legal advisors should conduct your own investigation of the property and transaction.

547 HARPER AVE, DETROIT, MI 48202 // FOR SALE

LOCATION

SUBJECT



NEARBY DEVELOPMENT PROJECTS

Milwaukee Junction has seen a resurgence of interest and investment, leading to various developments aimed at transforming it into a vibrant community, including:

Detroit PBS HQ: Formerly 'Detroit Public TV', the public broadcasting station plans to transform an empty block and warehouse that was purchased in early 2024 into a community media campus that will open in 2026.

Piquette Flats: A 108,000 SF former Studebaker Detroit Service Building is being transformed into a 161 affordable loft-style studio, one-bedroom, and two-bedroom apartments and will offer 192 parking spaces for residents. The estimated completion date is Summer 2024.

Fisher 21 Lofts Project: This \$134M project represents one of the most ambitious redevelopment efforts of an abandoned building. The existing structure is proposed to be redeveloped into 435 rental apartments, 38,000 SF of commercial space, and outdoor & indoor amenities.

LOCATION DETAILS

Market	Detroit
Sub Market	Detroit-New Center
County	Wayne
Cross Streets	Beaubien and St. Antoine
Street Parking	Yes North Side of Street
Signal Intersection	Yes
Road Type	Paved
Market Type	Large
Nearest Highway	I-94 and I-75



P.A. COMMERCIAL
Corporate & Investment Real Estate



SUBJECT

Levi Smith, JD SENIOR ASSOCIATE

D: 248.331.0205 | **C:**

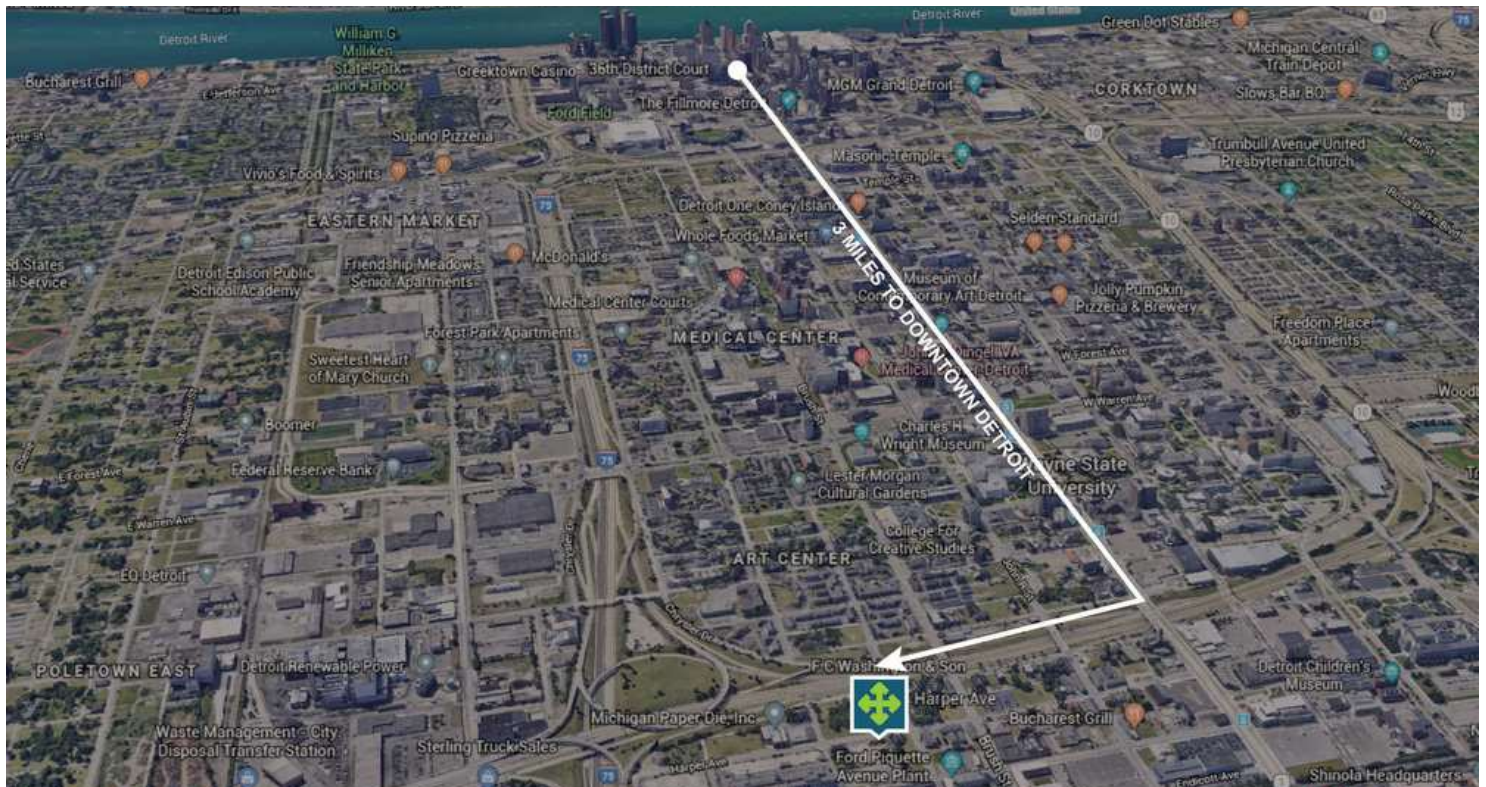
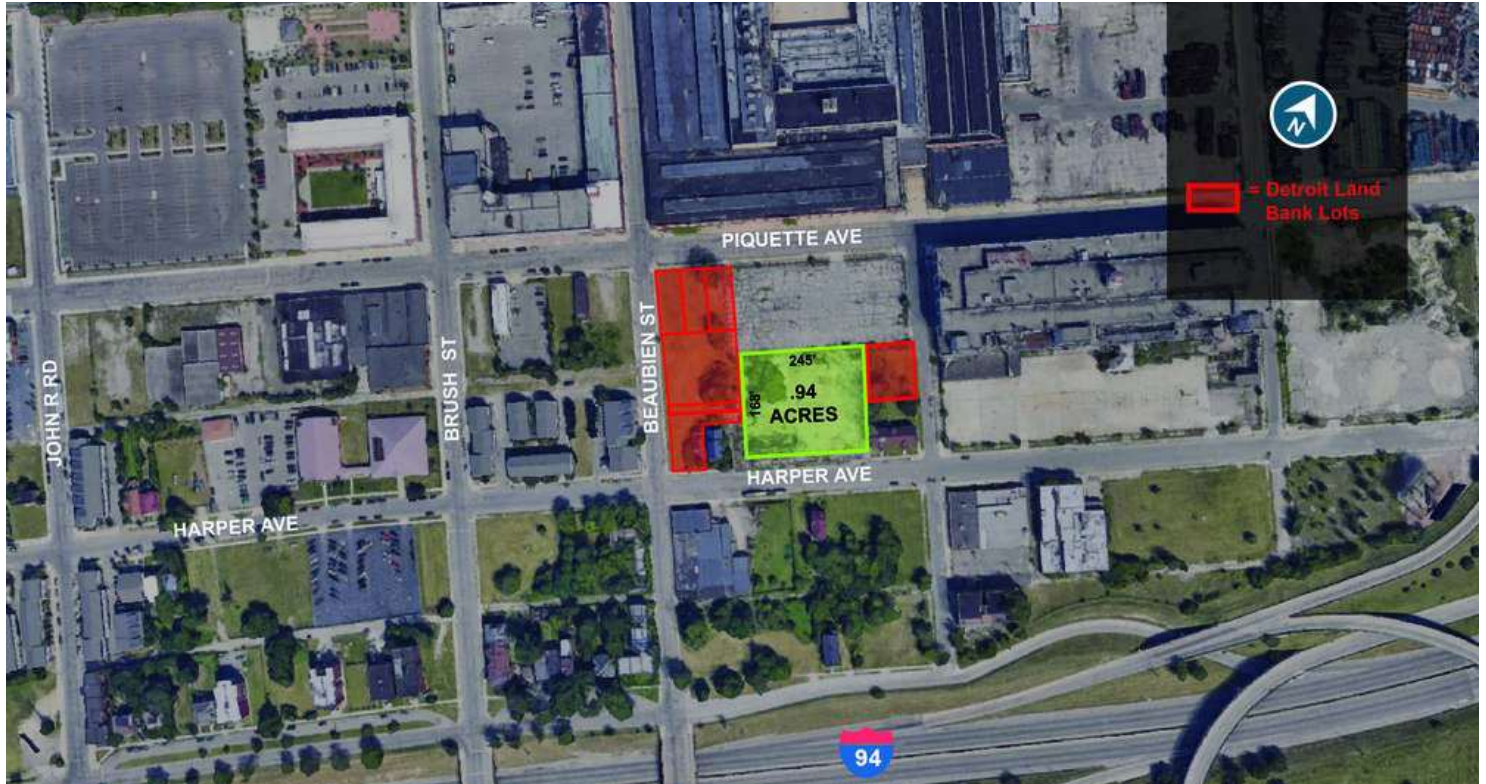
levi@pacommercial.com

We obtained the information above from sources we believe to be reliable. However, we have not verified its accuracy and make no guarantee, warranty or representation about it. It is submitted subject to the possibility of errors, omissions, change of price, rental or other conditions, prior sale, lease or financing, or withdrawal without notice. We include projections, opinions, assumptions or estimates for example only, and they may not represent current, past or future performance of the property. You and your tax and legal advisors should conduct your own investigation of the property and transaction.

547 HARPER AVE, DETROIT, MI 48202 // FOR SALE

ADDITIONAL PHOTOS

SUBJECT



P.A. COMMERCIAL
Corporate & Investment Real Estate



SUBJECT

Levi Smith, JD SENIOR ASSOCIATE

D: 248.331.0205 | C:

levi@pacommercial.com

We obtained the information above from sources we believe to be reliable. However, we have not verified its accuracy and make no guarantee, warranty or representation about it. It is submitted subject to the possibility of errors, omissions, change of price, rental or other conditions, prior sale, lease or financing, or withdrawal without notice. We include projections, opinions, assumptions or estimates for example only, and they may not represent current, past or future performance of the property. You and your tax and legal advisors should conduct your own investigation of the property and transaction.

547 HARPER AVE, DETROIT, MI 48202 // FOR SALE

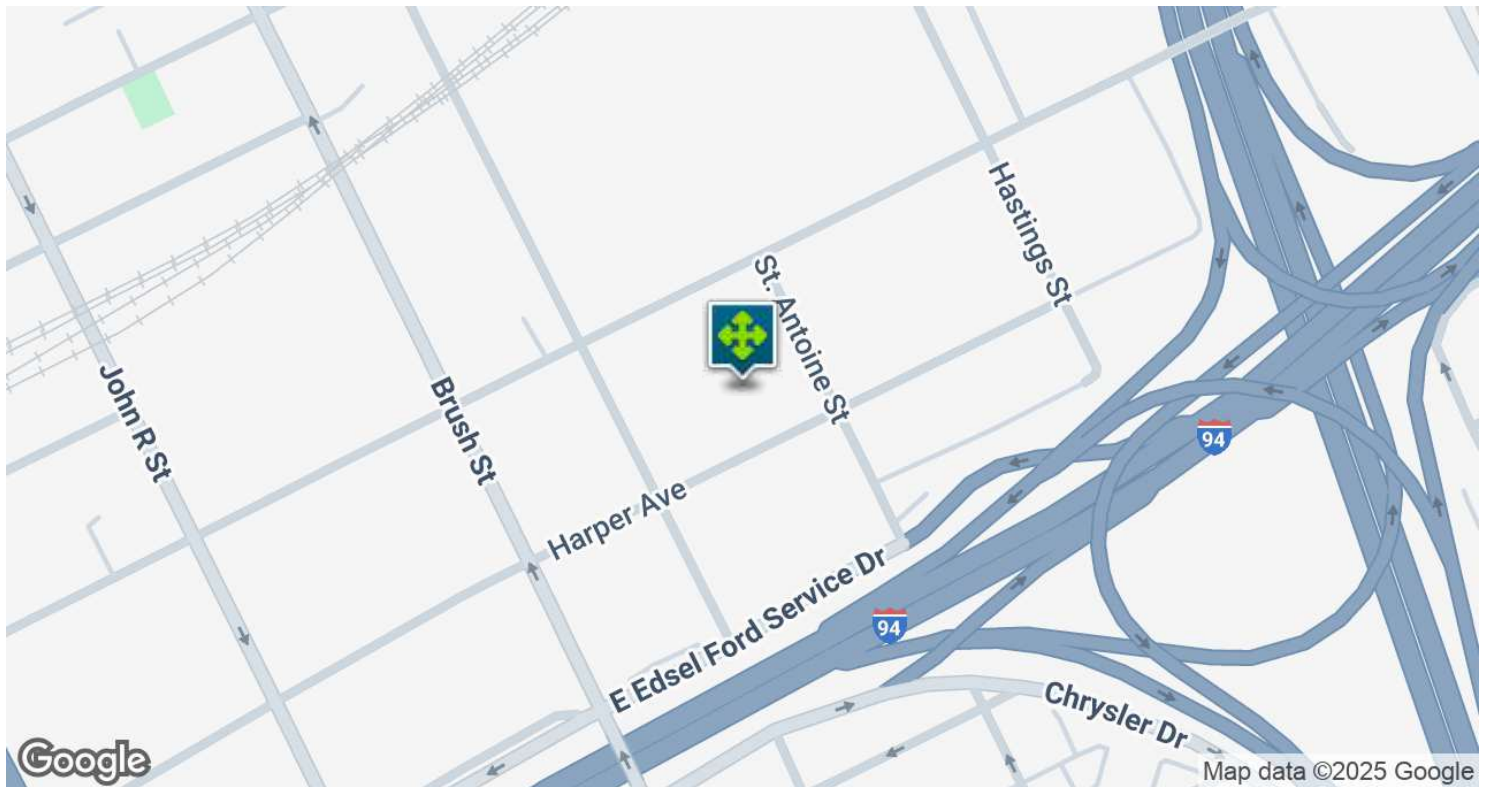
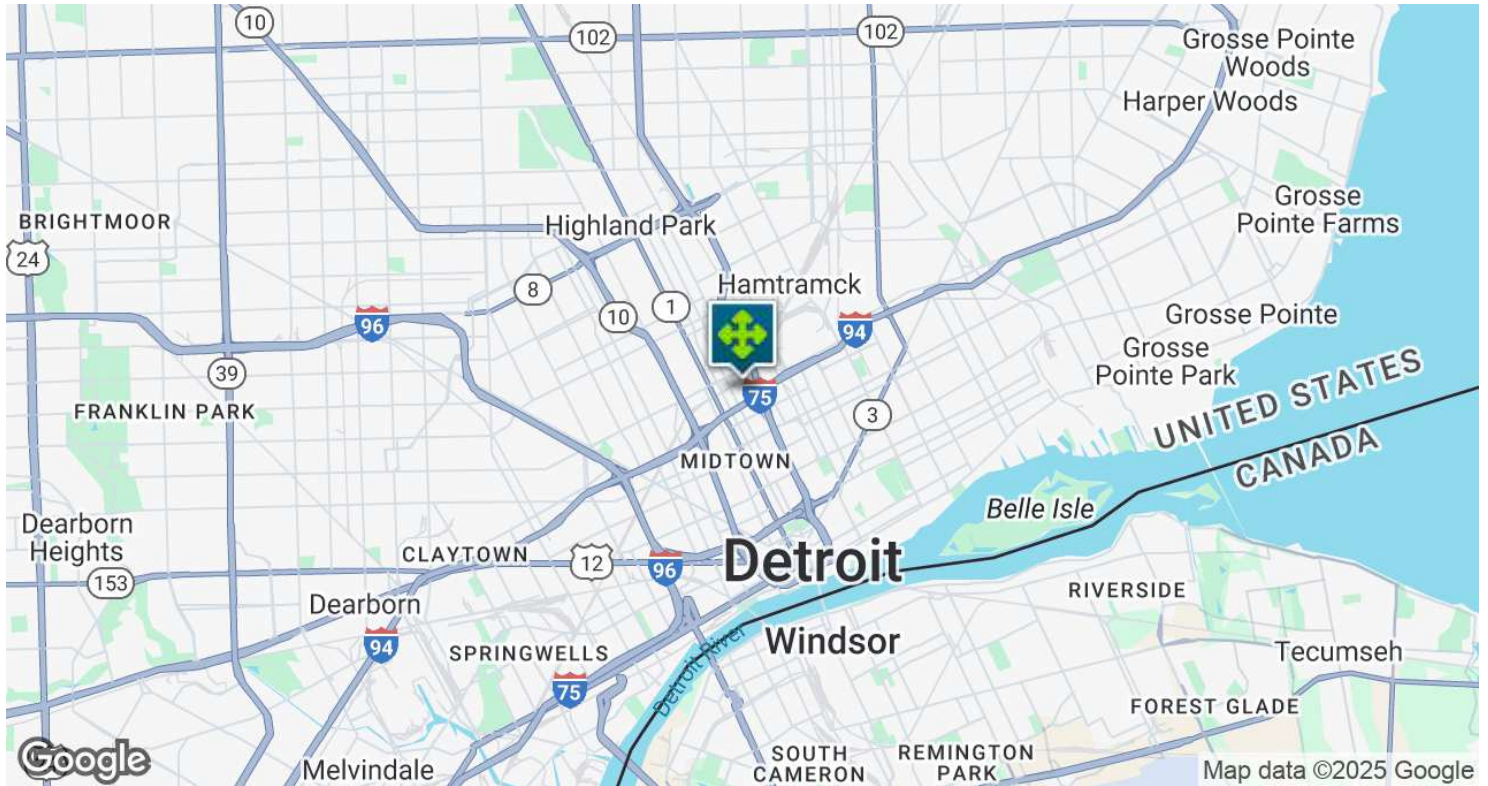
RETAILER MAP



547 HARPER AVE, DETROIT, MI 48202 // FOR SALE

LOCATION MAP

SUBJECT



P.A. COMMERCIAL
Corporate & Investment Real Estate



SUBJECT

Levi Smith, JD SENIOR ASSOCIATE

D: 248.331.0205 | C:

levi@pacommercial.com

We obtained the information above from sources we believe to be reliable. However, we have not verified its accuracy and make no guarantee, warranty or representation about it. It is submitted subject to the possibility of errors, omissions, change of price, rental or other conditions, prior sale, lease or financing, or withdrawal without notice. We include projections, opinions, assumptions or estimates for example only, and they may not represent current, past or future performance of the property. You and your tax and legal advisors should conduct your own investigation of the property and transaction.

DEMOGRAPHICS MAP & REPORT



levi@pacommercial.com

547 HARPER AVE, DETROIT, MI 48202 // FOR SALE

CONTACT US

SUBJECT



FOR MORE INFORMATION, PLEASE CONTACT:



Levi Smith, JD

SENIOR ASSOCIATE

D: 248.331.0205

C:

levi@pacommercial.com

P.A. Commercial

26555 Evergreen Road, Suite 1500

Southfield, MI 48076

P: 248.358.0100

F: 248.358.5300

pacommercial.com

Follow Us!



P.A. COMMERCIAL
Corporate & Investment Real Estate



We obtained the information above from sources we believe to be reliable. However, we have not verified its accuracy and make no guarantee, warranty or representation about it. It is submitted subject to the possibility of errors, omissions, change of price, rental or other conditions, prior sale, lease or financing, or withdrawal without notice. We include projections, opinions, assumptions or estimates for example only, and they may not represent current, past or future performance of the property. You and your tax and legal advisors should conduct your own investigation of the property and transaction.