

22M-40

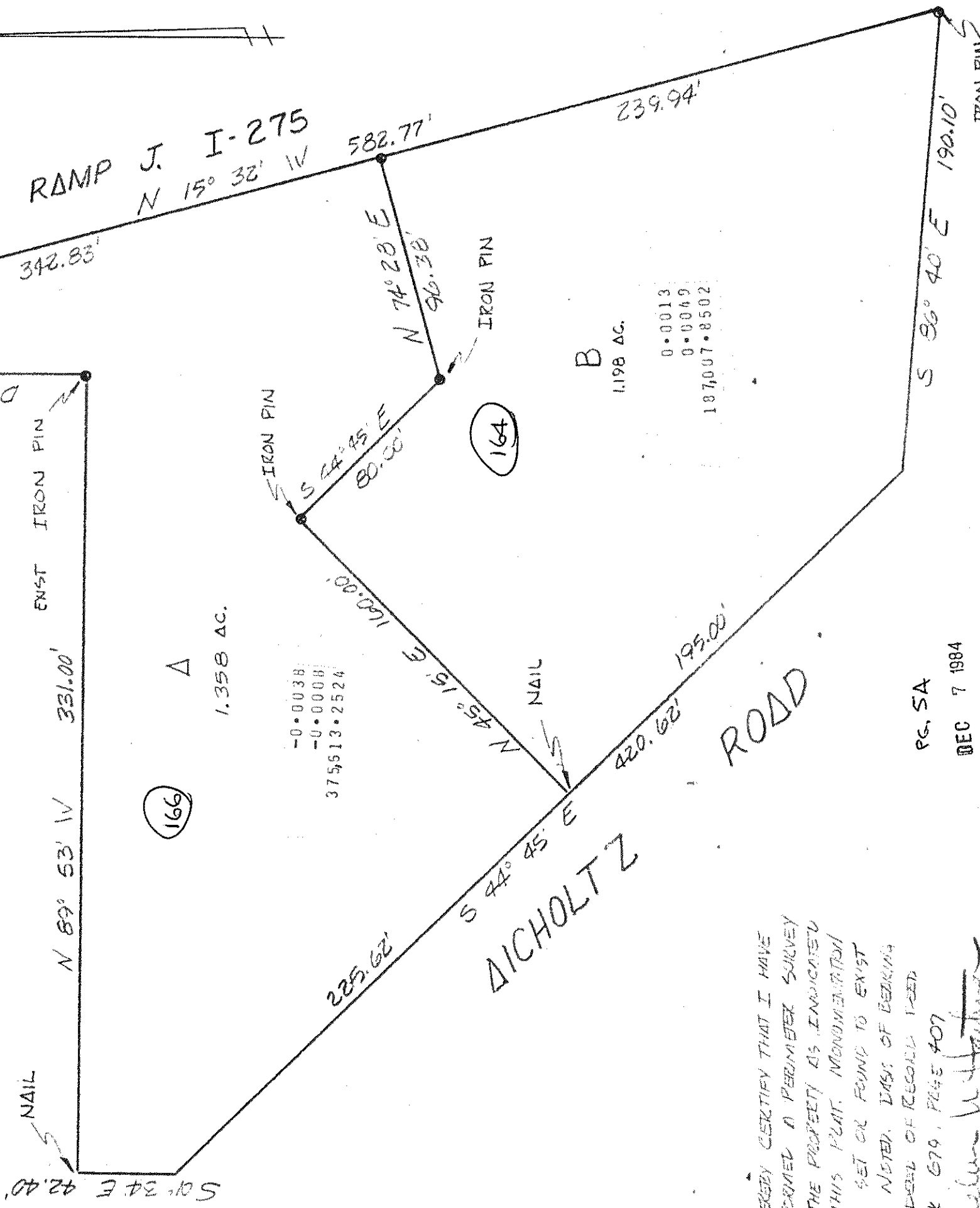
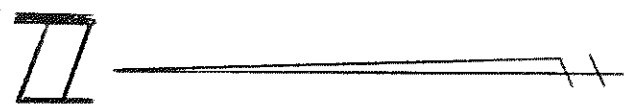
STA 55+70.96
RAMP J

EXIST. IRON PIN
N.E. COR. OF
FLUWIN ACRES
SUBDIVISION

RECEIVED

'84 DEC 7 AM 9:24

CLERMONT CO.
PLANNING
COMMISSION

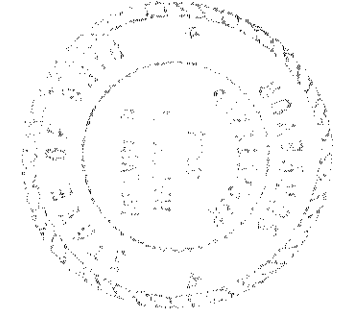


375513.2524
-0.0038
-0.0008

B
1.198 AC.
0.0013
0.0049
187,007.8502

I HEREBY CERTIFY THAT I HAVE
PERFORMED A PERIMETER SURVEY
OF THE PROPERTY AS INDICATED
ON THIS PLAT. MONUMENTATION
WAS SET OR FOUND TO EXIST
AS NOTED. DATE OF BEARING
IS PERMITS OF RECORD FILED
BOOK 679, PAGE #07

Melvin N. Hartman
MELVIN N. HARTMAN



PLAT OF SURVEY
MATTHEW M.S. #1138
UNION TOWNSHIP CLERMONT COUNTY, OHIO

HARTMAN-WALTERS, INC.
Engineer-Consultants
1073 Ohio Pike
Cincinnati, Ohio 45245
(513) 752-8811

APPROVED: _____
DATE: DEC. 1984
SCALE: 1" = 50'

SHEET 1 of 3

CO-293

4166
SA/164