

COCCA DEVELOPMENT

RETAIL SPACE FOR LEASE

MALL VIEW PLAZA

305 EAST McCAULEY DRIVE

UHRICHVILLE, OH 44683



- Join Dollar Tree in Claymont Center with Dollar General and Subway
- Ample well-lit parking lot with 2 main entrances into center
- Front wall signs plus large tenant pylon sign
- Commerce Drive crosses in front of plaza with additional 5,000+ cars
- Easy ingress & egress on State Route 250 with approximately 24,000 cars passing by plaza per day as well as easy access to Interstate 77 and State Route 800.

AVAILABLE SUITE AREA—\$8/square foot NNN:

Approximately 15,203 square feet*

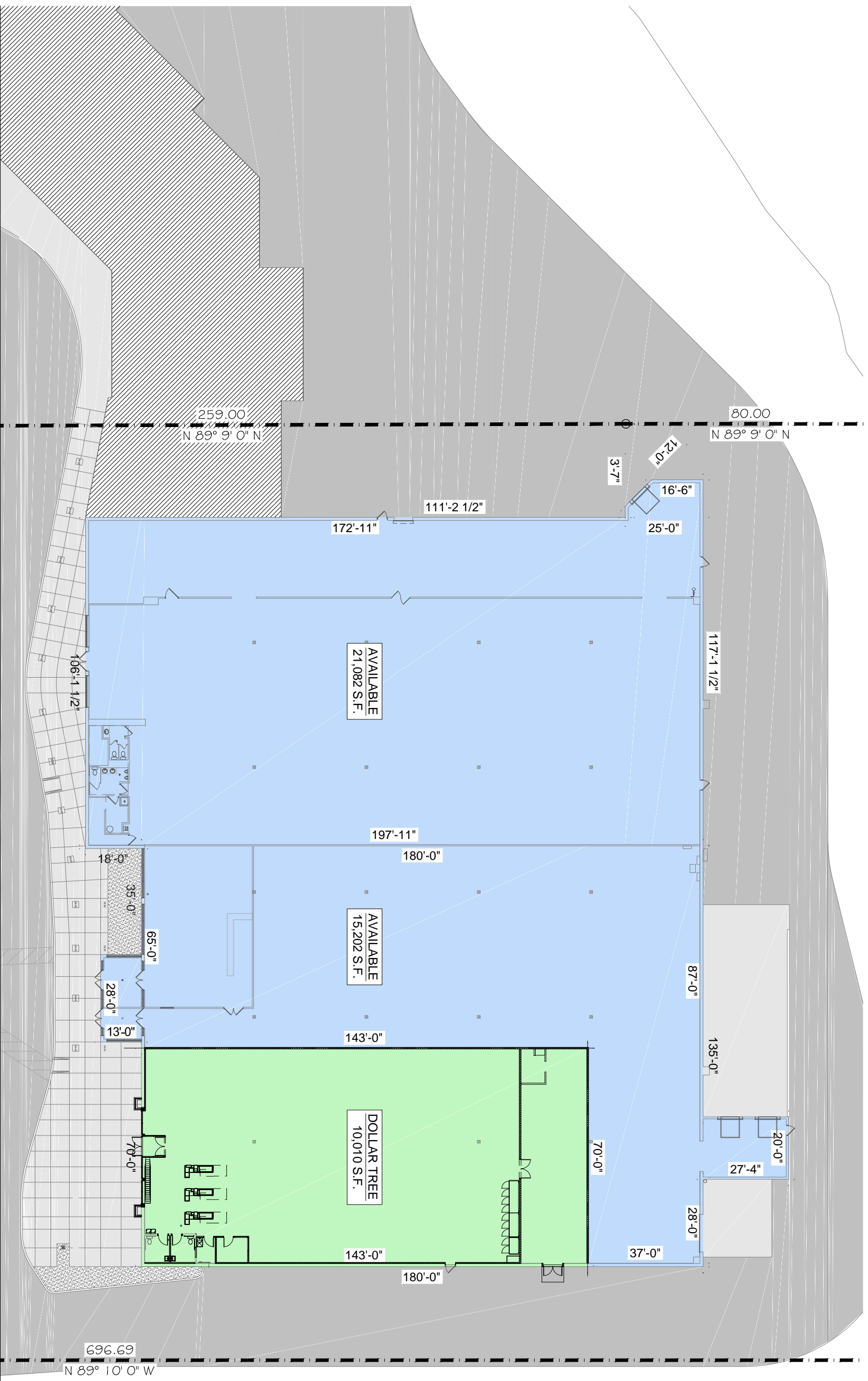
Approximately 21,082 square feet*

*Can be reduced or combined per space needs

NNN: Base rent plus Real Estate Taxes and Insurance. Tenant pays separately metered utilities for gas, electric, water, sewer, & trash removal as well as own property maintenance including snow removal and lawn care.

CALL 330-729-1010 FOR MORE INFORMATION

www.coccadevelopment.com



DEVELOPED & MANAGED BY

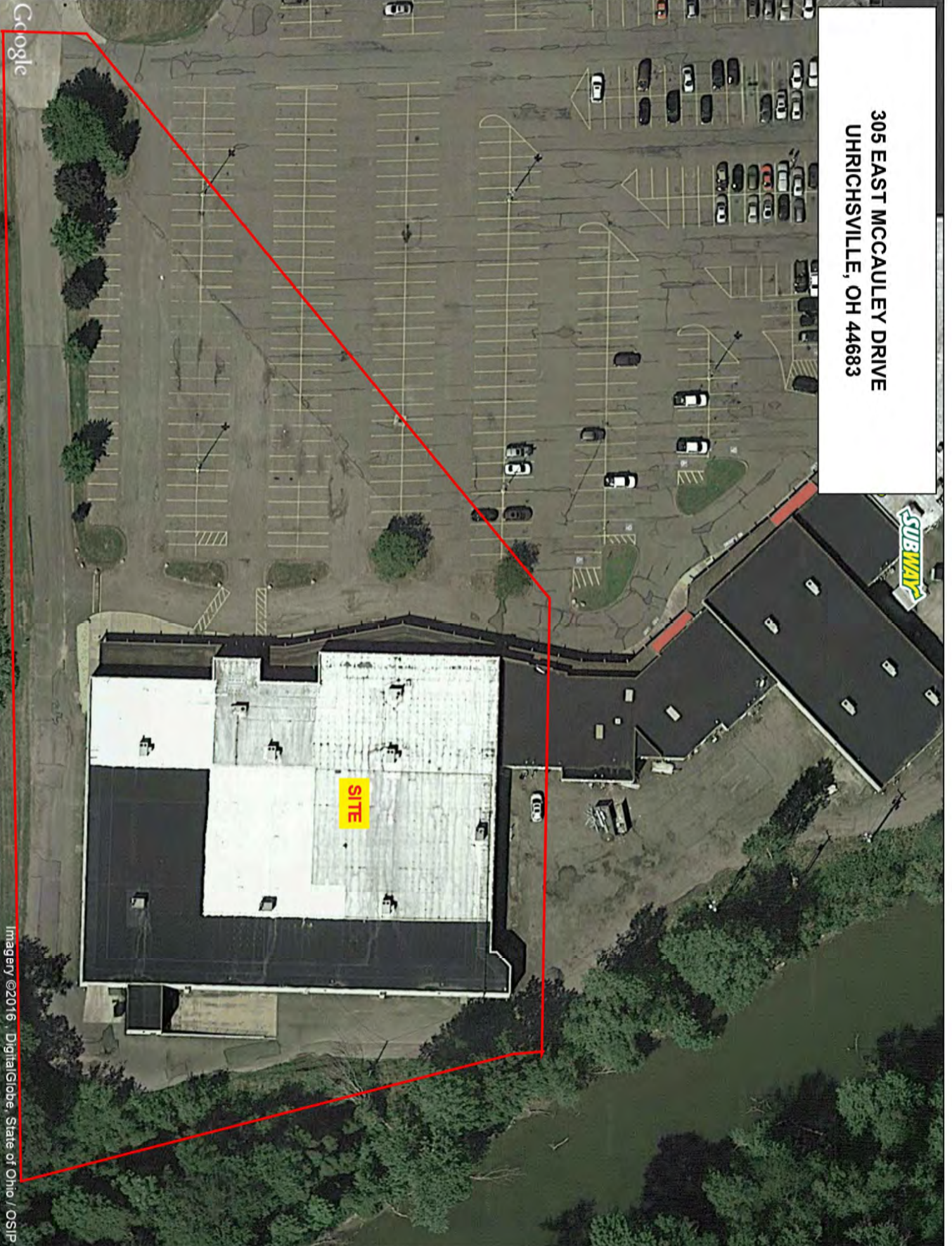
Cocca Development, LTD

100 DEBARTOLO PLACE, SUITE 400
 BOARDMAN, OH 44512
 PHONE: 330-729-1010
 FAX: 330-729-1008

COMMERCIAL BUILDING

EAST McCAULEY DRIVE
 UHRICHSVILLE, OH
 TUSCAWARAS COUNTY

305 EAST MCCAULEY DRIVE
UHRICHSVILLE, OH 44683



Google

This map was produced using data from private and government sources deemed to be reliable. The information herein is provided without representation or warranty.

Imagery ©2016 DigitalGlobe, State of Ohio / OSIP

305 E McCauley Dr
Uhrichsville, OH 44683



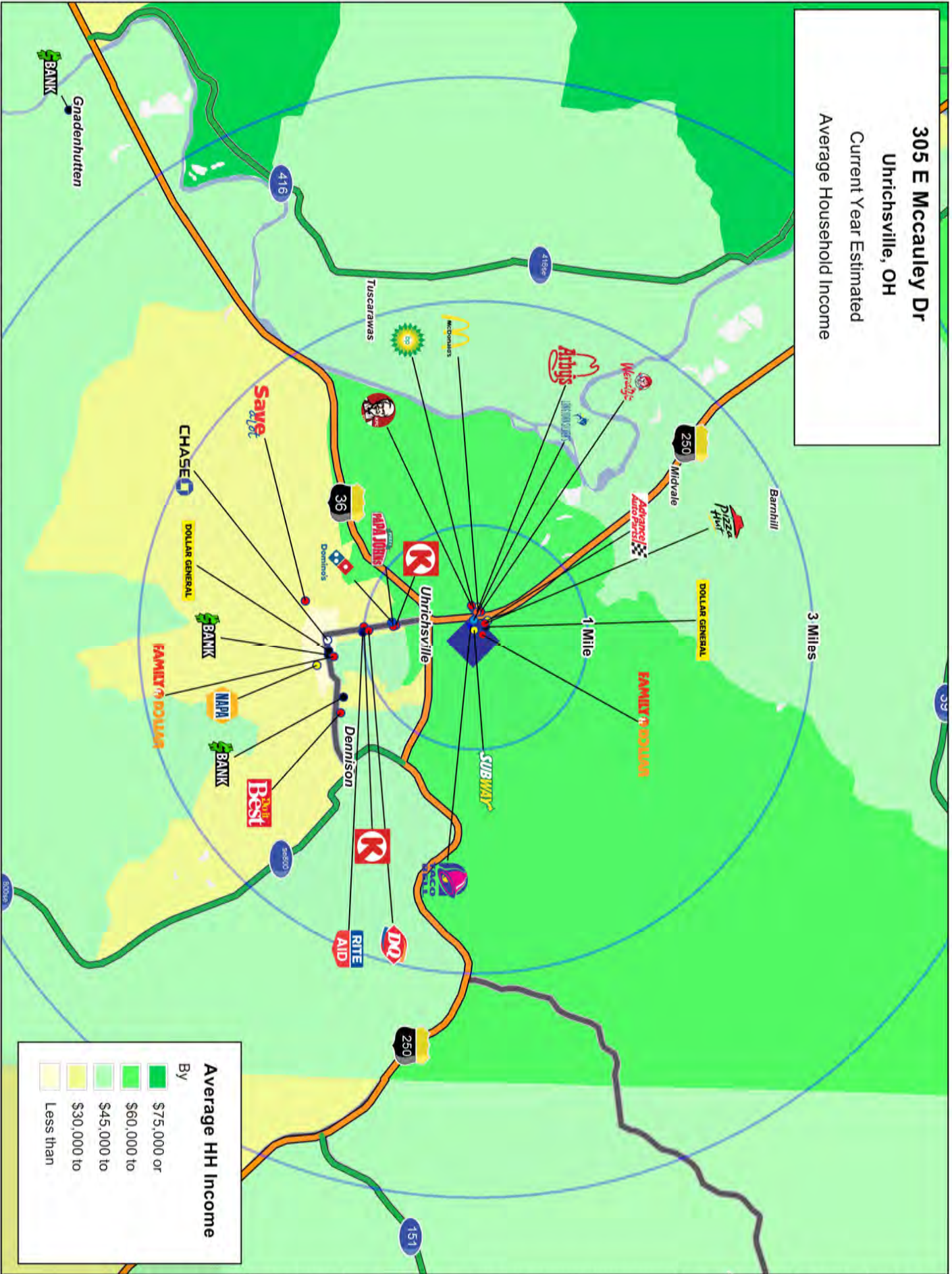
Lat: 40.41129 Long: -81.34927 Zoom: 0.56 m

Logos are for identification purposes only and may be trademarks of their respective companies.

Map data ©2017 Google Imagery ©2017 DigitalGlobe, State of Ohio / OSIP, USDA Farm Service Agency

This map was produced using data from private and government sources deemed to be reliable. The information herein is provided without representation or warranty.

305 E Mccauley Dr
Uhrichsville, OH
 Current Year Estimated
 Average Household Income



Average HH Income

By	Income Range
Dark Green	\$75,000 or more
Medium Green	\$60,000 to \$74,999
Light Green	\$45,000 to \$59,999
Yellow-Green	\$30,000 to \$44,999
Yellow	Less than \$29,999

This map was produced using data from private and government sources deemed to be reliable. The information herein is provided without representation or warranty.

COCCA DEVELOPMENT, LTD

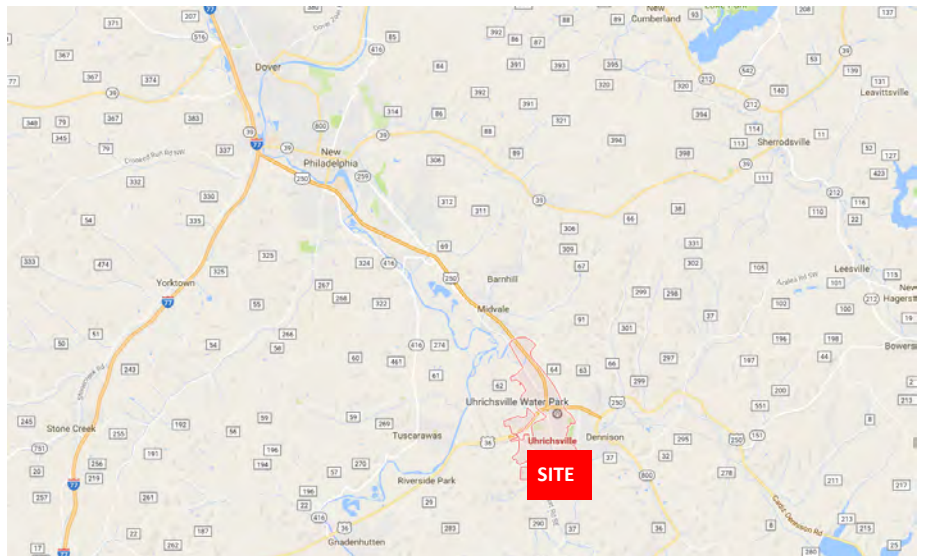
305 East McCauley Drive Uhrichsville, Ohio 44683

AT A GLANCE

- ◆ The city of Uhrichsville is located in Tuscarawas County, Mill Township, in the mid-east region of Ohio.
- ◆ It was originally named Waterford when it was established in 1833, but was renamed in 1839 after Michael Uhrich, a local mill operator.
- ◆ The village of Dennison is immediately adjacent to Uhrichsville and they are known as the “Twin Cities”, with Claymont School District as the major education provider to both.
- ◆ The Ohio and Erie canals along with the Pan Handle Railroad and later the railroad stops built in Dennison added to the growth in the area.
- ◆ The Uhrichsville Water Park opened in June of 2008 and features a heated pool along with 2-story slides, waterfalls, and a jungle gym.
- ◆ Notable people born and raised in Uhrichsville include Cody Garbrandt, UFC Bantamweight Champion; Florence Wolf Gotthold, painter; and Dean Sensanbaugher, played 2 seasons in the late 1940’s as halfback/defensive back for the Cleveland Browns.

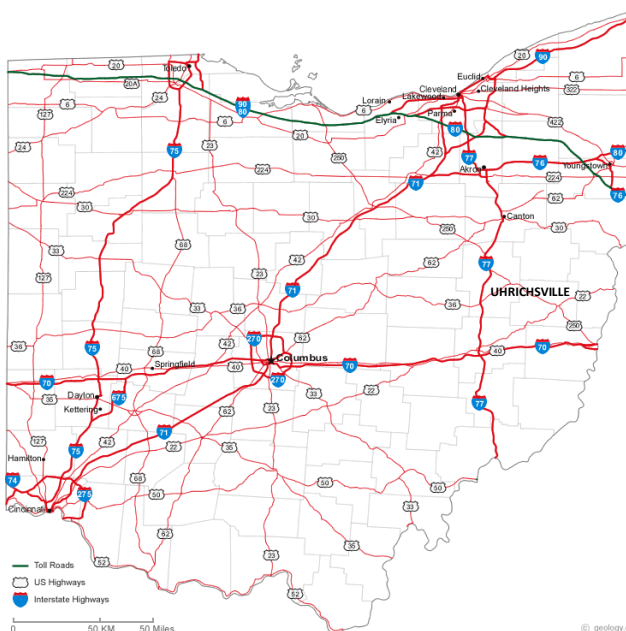
305 East McCauley Drive Uhrichsville, OH 44683

The site is in the mid-east region of Ohio, easily accessible to many major cities and areas of Ohio, all under 2 hours travel time.



It is just over 1 mile North of the city's Water Park, a major attraction in the area with heated pool, slides, and waterfalls.

Under 1 mile South of Route 36, and 9 miles Northwest of Interstate 77, it is easily accessible from the numerous small cities that surround it.



The nearest major city is New Philadelphia, just under 8 miles Northwest; Canton is 35 miles North; Akron is 57 miles North; and Cleveland is 93 miles North. Martins Ferry is 47 miles Southeast with Columbus 115 miles Southwest and Wheeling, West Virginia 52 miles Southeast.

GRAPHIC PROFILE

2000-2010 Census, 2014 Estimates with 2019 Projections

Calculated using Proportional Block Groups

Lat/Lon: 40.4106/-81.3461

RGRAP3

305 E Mccauley Dr

Uhrichsville, OH

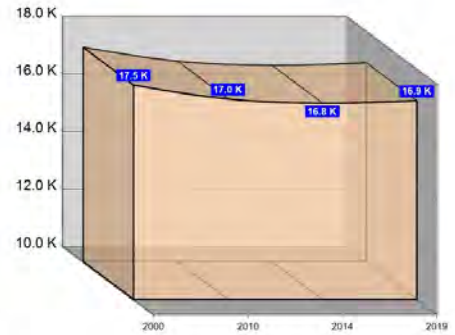
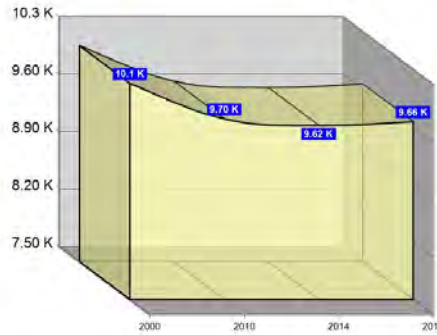
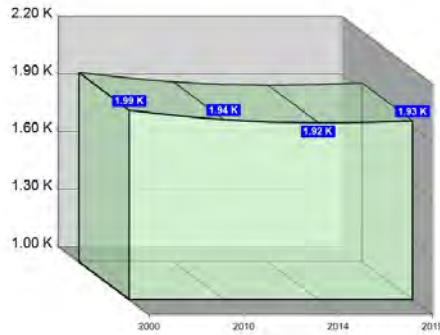
1 Mile

3 Miles

5 Miles

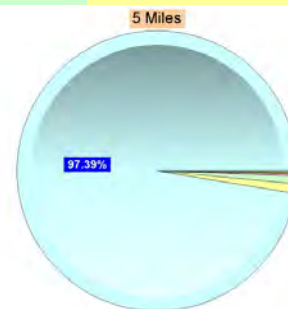
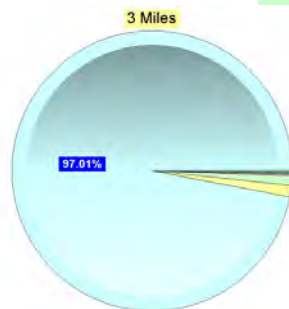
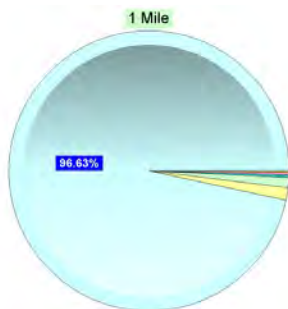
Population

Estimated Population (2014)	1,922	9,619	16,835
Projected Population (2019)	1,931	9,664	16,912
Census Population (2010)	1,938	9,698	16,973
Census Population (2000)	1,987	10,130	17,461
Projected Annual Growth (2014-2019)	9 0.1%	45 0.1%	77 0.1%
Historical Annual Growth (2010-2014)	-15 -0.6%	-78 -1.1%	-138 -0.7%
Historical Annual Growth (2000-2010)	-50 -0.2%	-432 -0.4%	-488 -0.3%
Estimated Population Density (2014)	612 <i>psm</i>	340 <i>psm</i>	214 <i>psm</i>
Trade Area Size	3.1 <i>sq mi</i>	28.3 <i>sq mi</i>	78.5 <i>sq mi</i>



Race and Ethnicity (2014)

Not Hispanic or Latino Population	1,905 99.1%	9,529 99.1%	16,686 99.1%
White	1,845 96.9%	9,272 97.3%	16,297 97.7%
Black or African American	22 1.2%	104 1.1%	147 0.9%
American Indian or Alaska Native	3 0.2%	14 0.1%	27 0.2%
Asian	6 0.3%	20 0.2%	40 0.2%
Hawaiian or Pacific Islander	- -	2 -	3 -
Other Race	2 0.1%	5 0.1%	7 -
Two or More Races	27 1.4%	113 1.2%	166 1.0%
Hispanic or Latino Population	17 0.9%	90 0.9%	149 0.9%
White	12 71.5%	60 66.1%	100 67.2%
Black or African American	- -	1 1.1%	3 2.0%
American Indian or Alaska Native	- -	- -	- 0.1%
Asian	- -	1 0.7%	1 0.7%
Hispanic Hawaiian or Pacific Islander	- -	- -	- 0.3%
Other Race	4 22.4%	15 16.2%	22 15.0%
Two or More Races	1 6.1%	14 15.9%	22 14.8%



White Black or African American American Indian or Alaska Native Asian Hawaiian or Pacific Islander Other Race 2+ Races

This report was produced using data from private and government sources deemed to be reliable. The information herein is provided without representation or warranty.

GRAPHIC PROFILE

2000-2010 Census, 2014 Estimates with 2019 Projections

Calculated using Proportional Block Groups

Lat/Lon: 40.4106/-81.3461

RGRAP3

305 E Mccauley Dr

Uhrichsville, OH

1 Mile

3 Miles

5 Miles

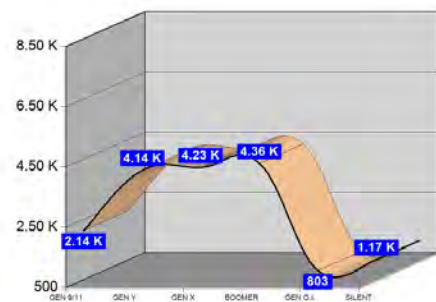
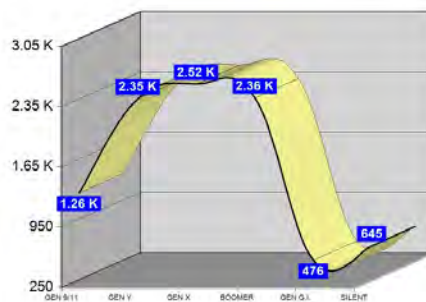
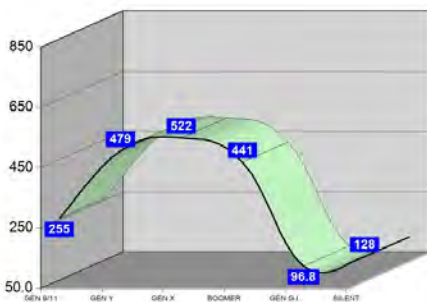
Age Distribution (2014)

Age Group	1 Mile	3 Miles	5 Miles
Age Under 5 Years	122 6.3%	620 6.5%	1,039 6.2%
Age 5 to 9 Years	133 6.9%	639 6.6%	1,098 6.5%
Age 10 to 14 Years	140 7.3%	670 7.0%	1,128 6.7%
Age 15 to 19 Years	142 7.4%	660 6.9%	1,110 6.6%
Age 20 to 24 Years	118 6.2%	613 6.4%	1,013 6.0%
Age 25 to 29 Years	122 6.4%	579 6.0%	977 5.8%
Age 30 to 34 Years	124 6.5%	599 6.2%	1,034 6.1%
Age 35 to 39 Years	115 6.0%	577 6.0%	1,009 6.0%
Age 40 to 44 Years	121 6.3%	590 6.1%	1,030 6.1%
Age 45 to 49 Years	118 6.2%	587 6.1%	1,066 6.3%
Age 50 to 54 Years	137 7.1%	699 7.3%	1,226 7.3%
Age 55 to 59 Years	124 6.4%	661 6.9%	1,248 7.4%
Age 60 to 64 Years	103 5.3%	565 5.9%	1,067 6.3%
Age 65 to 69 Years	78 4.1%	439 4.6%	820 4.9%
Age 70 to 74 Years	73 3.8%	370 3.9%	677 4.0%
Age 75 to 79 Years	55 2.8%	274 2.8%	492 2.9%
Age 80 to 84 Years	46 2.4%	232 2.4%	401 2.4%
Age 85 Years or Over	51 2.6%	244 2.5%	401 2.4%
Median Age	37.0	37.9	39.1

Generation (2014)

Generation	1 Mile	3 Miles	5 Miles
Generation 9/11 Millennials (Age Under 10 Years)	255 13.3%	1,260 13.1%	2,137 12.7%
Gen Y to Echo Boomers (Age 10 to 29 Years)	522 27.2%	2,523 26.2%	4,228 25.1%
Gen Xers (Age 30 to 49 Years)	479 24.9%	2,353 24.5%	4,139 24.6%
Baby Boomers (Age 50 to 69 Years)	441 23.0%	2,363 24.6%	4,360 25.9%
Silent Generation (Age 70 to 79 Years)	128 6.7%	645 6.7%	1,169 6.9%
G.I. Generation (Age 80 Years or Over)	97 5.0%	476 4.9%	803 4.8%

This report was produced using data from private and government sources deemed to be reliable. The information herein is provided without representation or warranty.



GRAPHIC PROFILE

2000-2010 Census, 2014 Estimates with 2019 Projections

Calculated using Proportional Block Groups

Lat/Lon: 40.4106/-81.3461

RGRAP3

305 E Mccauley Dr

Uhrichsville, OH

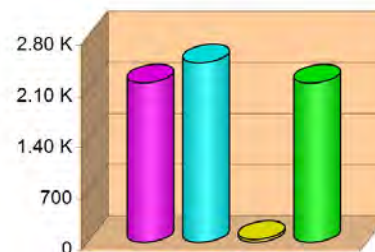
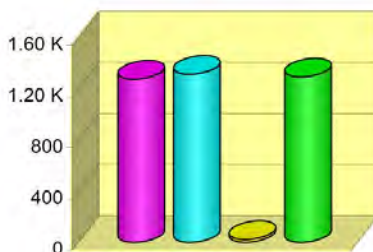
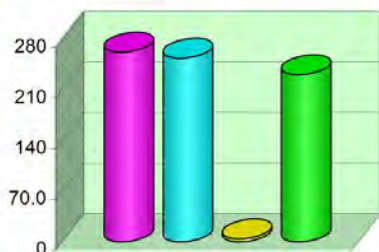
1 Mile

3 Miles

5 Miles

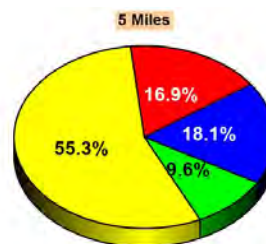
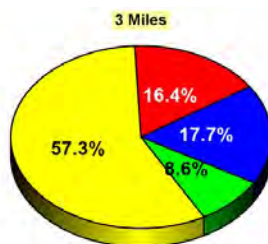
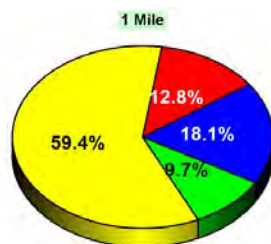
Household Type (2014)

	1 Mile	3 Miles	5 Miles
Total Households	752	3,906	6,855
Family Households	516 33.8%	2,590 33.7%	4,636 35.8%
Family Households with Children	262 50.8%	1,276 49.3%	2,181 47.0%
Family Households No Children	254 49.2%	1,315 50.7%	2,455 53.0%
Non-Family Households	235 33.8%	1,316 33.7%	2,219 35.8%
Non-Family Households with Children	4 1.8%	22 1.7%	40 1.8%
Non-Family Households No Children	231 98.2%	1,294 98.3%	2,179 98.2%



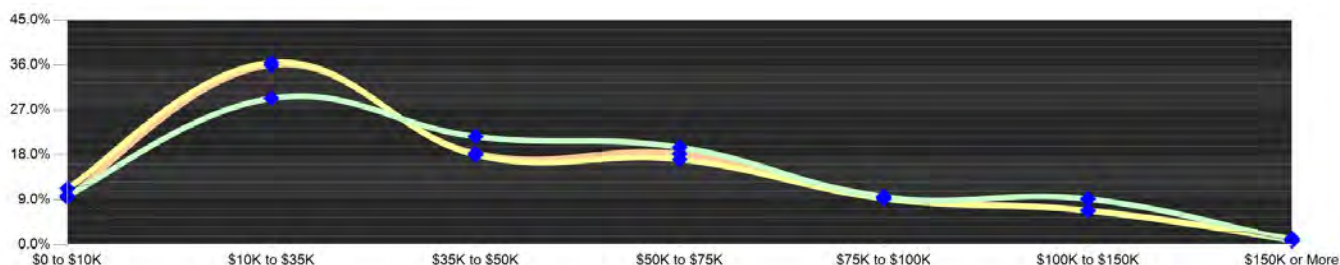
Education Attainment (2014)

	1 Mile	3 Miles	5 Miles
Elementary or Some High School	159 12.8%	1,037 16.4%	1,900 16.9%
High School Graduate	736 59.4%	3,612 57.3%	6,215 55.3%
Some College or Associate Degree	225 18.1%	1,115 17.7%	2,036 18.1%
Bachelor or Graduate Degree	120 9.7%	545 8.6%	1,082 9.6%



Household Income (2014)

	1 Mile	3 Miles	5 Miles
Estimated Average Household Income	\$41,524	\$39,253	\$40,680
Estimated Median Household Income	\$36,314	\$33,510	\$35,243
HH Income Under \$10,000	74 9.9%	441 11.3%	653 9.5%
HH Income \$10,000 to \$34,999	221 29.4%	1,428 36.5%	2,470 36.0%
HH Income \$35,000 to \$49,999	163 21.7%	705 18.0%	1,258 18.4%
HH Income \$50,000 to \$74,999	147 19.5%	668 17.1%	1,252 18.3%
HH Income \$75,000 to \$99,999	69 9.2%	266 6.8%	474 6.9%
HH Income \$100,000 to \$149,999	69 9.2%	266 6.8%	474 6.9%
HH Income \$150,000 or More	6 0.8%	37 0.9%	86 1.3%



This report was produced using data from private and government sources deemed to be reliable. The information herein is provided without representation or warranty.

EXPANDED PROFILE

2000-2010 Census, 2014 Estimates with 2019 Projections

Calculated using Proportional Block Groups

Lat/Lon: 40.4106/-81.3461

RF5

305 E Mccauley Dr

Uhrichsville, OH

Population

	1 Mile	3 Miles	5 Miles
Estimated Population (2014)	1,922	9,619	16,835
Projected Population (2019)	1,931	9,664	16,912
Census Population (2010)	1,938	9,698	16,973
Census Population (2000)	1,987	10,130	17,461
Projected Annual Growth (2014 to 2019)	9 0.1%	45 0.1%	77 0.1%
Historical Annual Growth (2010 to 2014)	-15 -0.2%	-78 -0.2%	-138 -0.2%
Historical Annual Growth (2000 to 2010)	-50 -0.2%	-432 -0.4%	-488 -0.3%
Estimated Population Density (2014)	612 <i>psm</i>	340 <i>psm</i>	214 <i>psm</i>
Trade Area Size	3.14 <i>sq mi</i>	28.26 <i>sq mi</i>	78.49 <i>sq mi</i>

Households

Estimated Households (2014)	752	3,906	6,855
Projected Households (2019)	766	3,980	6,985
Census Households (2010)	741	3,852	6,759
Census Households (2000)	767	3,931	6,695
Estimated Households with Children (2014)	267 35.5%	1,298 33.2%	2,221 32.4%
Estimated Average Household Size (2014)	2.52	2.43	2.42

Average Household Income

Estimated Average Household Income (2014)	\$48,311	\$44,360	\$46,108
Projected Average Household Income (2019)	\$52,351	\$47,869	\$49,890
Estimated Average Family Income (2014)	\$58,002	\$54,526	\$55,697

Median Household Income

Estimated Median Household Income (2014)	\$44,459	\$37,465	\$38,487
Projected Median Household Income (2019)	\$48,348	\$40,510	\$41,737
Estimated Median Family Income (2014)	\$52,141	\$47,355	\$48,229

Per Capita Income

Estimated Per Capita Income (2014)	\$19,023	\$18,113	\$18,922
Projected Per Capita Income (2019)	\$20,909	\$19,822	\$20,766
Estimated Per Capita income 5 Year Growth	\$1,886 9.9%	\$1,709 9.4%	\$1,844 9.7%
Estimated Average Household Net Worth (2014)	\$314,058	\$302,526	\$311,476

Daytime Demos (2014)

Total Businesses	66	349	534
Total Employees	734	3,365	6,125
Company Headquarter Businesses	1 0.8%	3 0.9%	9 1.7%
Company Headquarter Employees	136 18.6%	338 10.0%	744 12.2%
Employee Population per Business	11.2	9.6	11.5
Residential Population per Business	29.3	27.6	31.5

This report was produced using data from private and government sources deemed to be reliable. The information herein is provided without representation or warranty.

EXPANDED PROFILE

2000-2010 Census, 2014 Estimates with 2019 Projections

Calculated using Proportional Block Groups

Lat/Lon: 40.4106/-81.3461

RF5

305 E Mccauley Dr

Uhrichsville, OH

Race & Ethnicity

	1 Mile		3 Miles		5 Miles	
White (2014)	1,858	96.6%	9,332	97.0%	16,396	97.4%
Black or African American (2014)	22	1.2%	105	1.1%	150	0.9%
American Indian or Alaska Native (2014)	3	0.2%	14	0.1%	27	0.2%
Asian (2014)	6	0.3%	21	0.2%	41	0.2%
Hawaiian or Pacific Islander (2014)	-	-	2	-	3	-
Other Race (2014)	6	0.3%	20	0.2%	30	0.2%
Two or More Races (2014)	28	1.4%	127	1.3%	188	1.1%
Not Hispanic or Latino Population (2014)	1,905	99.1%	9,529	99.1%	16,686	99.1%
Hispanic or Latino Population (2014)	17	0.9%	90	0.9%	149	0.9%
Not Hispanic or Latino Population (2019)	1,912	99.0%	9,562	98.9%	16,742	99.0%
Hispanic or Latino Population (2019)	19	1.0%	102	1.1%	170	1.0%
Not Hispanic or Latino Population (2010)	1,923	99.2%	9,618	99.2%	16,841	99.2%
Hispanic or Latino Population (2010)	15	0.8%	80	0.8%	132	0.8%
Not Hispanic or Latino Population (2000)	1,972	99.2%	10,069	99.4%	17,375	99.5%
Hispanic or Latino Population (2000)	15	0.8%	61	0.6%	86	0.5%
Projected Hispanic Annual Growth (2014 to 2019)	2	2.1%	12	2.7%	21	2.9%
Historic Hispanic Annual Growth (2000 to 2014)	2	1.0%	29	3.4%	63	5.2%

Age Distribution (2014)

Age Under 5	122	6.3%	620	6.5%	1,039	6.2%
Age 5 to 9 Years	133	6.9%	639	6.6%	1,098	6.5%
Age 10 to 14 Years	140	7.3%	670	7.0%	1,128	6.7%
Age 15 to 19 Years	142	7.4%	660	6.9%	1,110	6.6%
Age 20 to 24 Years	118	6.2%	613	6.4%	1,013	6.0%
Age 25 to 29 Years	122	6.4%	579	6.0%	977	5.8%
Age 30 to 34 Years	124	6.5%	599	6.2%	1,034	6.1%
Age 35 to 39 Years	115	6.0%	577	6.0%	1,009	6.0%
Age 40 to 44 Years	121	6.3%	590	6.1%	1,030	6.1%
Age 45 to 49 Years	118	6.2%	587	6.1%	1,066	6.3%
Age 50 to 54 Years	137	7.1%	699	7.3%	1,226	7.3%
Age 55 to 59 Years	124	6.4%	661	6.9%	1,248	7.4%
Age 60 to 64 Years	103	5.3%	565	5.9%	1,067	6.3%
Age 65 to 74 Years	152	7.9%	809	8.4%	1,496	8.9%
Age 75 to 84 Years	101	5.2%	506	5.3%	893	5.3%
Age 85 Years or Over	51	2.6%	244	2.5%	401	2.4%
Median Age	37.0		37.9		39.1	

Gender Age Distribution (2014)

Female Population	1,002	52.1%	4,943	51.4%	8,543	50.7%
Age 0 to 19 Years	267	26.7%	1,238	25.0%	2,061	24.1%
Age 20 to 64 Years	551	55.1%	2,775	56.1%	4,853	56.8%
Age 65 Years or Over	183	18.3%	930	18.8%	1,629	19.1%
Female Median Age	38.5		39.6		40.9	
Male Population	921	47.9%	4,676	48.6%	8,292	49.3%
Age 0 to 19 Years	269	29.3%	1,352	28.9%	2,314	27.9%
Age 20 to 64 Years	531	57.7%	2,695	57.6%	4,816	58.1%
Age 65 Years or Over	120	13.0%	629	13.5%	1,162	14.0%
Male Median Age	35.7		36.3		37.6	

This report was produced using data from private and government sources deemed to be reliable. The information herein is provided without representation or warranty.

EXPANDED PROFILE

2000-2010 Census, 2014 Estimates with 2019 Projections

Calculated using Proportional Block Groups

Lat/Lon: 40.4106/-81.3461

RF5

305 E Mccauley Dr

Uhrichsville, OH

Household Income Distribution (2014)

	1 Mile		3 Miles		5 Miles	
HH Income \$200,000 or More	2	0.2%	13	0.3%	32	0.5%
HH Income \$150,000 to \$199,999	4	0.5%	24	0.6%	55	0.8%
HH Income \$100,000 to \$149,999	69	9.2%	266	6.8%	474	6.9%
HH Income \$75,000 to \$99,999	72	9.6%	362	9.3%	663	9.7%
HH Income \$50,000 to \$74,999	147	19.5%	668	17.1%	1,252	18.3%
HH Income \$35,000 to \$49,999	163	21.7%	705	18.0%	1,258	18.4%
HH Income \$25,000 to \$34,999	76	10.2%	489	12.5%	949	13.9%
HH Income \$15,000 to \$24,999	104	13.8%	687	17.6%	1,120	16.3%
HH Income Under \$15,000	115	15.3%	693	17.7%	1,053	15.4%
HH Income \$35,000 or More	457	60.8%	2,038	52.2%	3,732	54.4%
HH Income \$75,000 or More	147	19.5%	665	17.0%	1,223	17.8%

Housing (2014)

	1 Mile		3 Miles		5 Miles	
Total Housing Units	820		4,273		7,429	
Housing Units Occupied	752	91.7%	3,906	91.4%	6,855	92.3%
Housing Units Owner-Occupied	518	69.0%	2,619	67.0%	4,877	71.1%
Housing Units, Renter-Occupied	233	31.0%	1,288	33.0%	1,978	28.9%
Housing Units, Vacant	68	8.3%	367	8.6%	575	7.7%

Marital Status (2014)

	1 Mile		3 Miles		5 Miles	
Never Married	364	23.8%	1,870	24.3%	3,330	24.5%
Currently Married	787	51.5%	3,556	46.3%	6,355	46.8%
Separated	29	1.9%	246	3.2%	504	3.7%
Widowed	140	9.2%	758	9.9%	1,271	9.4%
Divorced	207	13.6%	1,259	16.4%	2,111	15.6%

Household Type (2014)

	1 Mile		3 Miles		5 Miles	
Population Family	1,562	81.3%	7,690	79.9%	13,564	80.6%
Population Non-Family	329	17.1%	1,807	18.8%	3,011	17.9%
Population Group Quarters	31	1.6%	123	1.3%	260	1.5%
Family Households	516	68.7%	2,590	66.3%	4,636	67.6%
Non-Family Households	235	31.3%	1,316	33.7%	2,219	32.4%
Married Couple with Children	163	20.7%	763	21.5%	1,371	21.6%
Average Family Household Size	3.0		3.0		2.9	

Household Size (2014)

	1 Mile		3 Miles		5 Miles	
1 Person Households	193	25.6%	1,092	28.0%	1,854	27.0%
2 Person Households	243	32.4%	1,288	33.0%	2,369	34.6%
3 Person Households	134	17.8%	644	16.5%	1,111	16.2%
4 Person Households	107	14.2%	520	13.3%	913	13.3%
5 Person Households	43	5.7%	224	5.7%	393	5.7%
6 or More Person Households	32	4.2%	138	3.5%	215	3.1%

Household Vehicles (2014)

	1 Mile		3 Miles		5 Miles	
Households with 0 Vehicles Available	65	8.7%	336	8.6%	476	6.9%
Households with 1 Vehicles Available	272	36.2%	1,488	38.1%	2,414	35.2%
Households with 2 or More Vehicles Available	414	55.1%	2,083	53.3%	3,966	57.9%
Total Vehicles Available	1,281		6,731		12,542	
Average Vehicles Per Household	1.7		1.7		1.8	

This report was produced using data from private and government sources deemed to be reliable. The information herein is provided without representation or warranty.

EXPANDED PROFILE

2000-2010 Census, 2014 Estimates with 2019 Projections

Calculated using Proportional Block Groups

Lat/Lon: 40.4106/-81.3461

RF5

305 E Mccauley Dr

Uhrichsville, OH

Labor Force (2014)

	1 Mile	3 Miles	5 Miles
Estimated Labor Population Age 16 Years or Over	1,466	7,439	13,088
Estimated Civilian Employed	777 53.0%	3,970 53.4%	7,089 54.2%
Estimated Civilian Unemployed	68 4.7%	331 4.4%	532 4.1%
Estimated in Armed Forces	- -	1 -	4 -
Estimated Not in Labor Force	621 42.3%	3,138 42.2%	5,463 41.7%
Unemployment Rate	4.7%	4.4%	4.1%

Occupation (2010)

	1 Mile	3 Miles	5 Miles
Occupation: Population Age 16 Years or Over	780	3,802	6,705
Management, Business, Financial Operations	95 12.2%	397 10.4%	685 10.2%
Professional, Related	113 14.5%	465 12.2%	843 12.6%
Service	149 19.1%	806 21.2%	1,327 19.8%
Sales, Office	198 25.4%	825 21.7%	1,472 22.0%
Farming, Fishing, Forestry	- -	1 -	4 0.1%
Construct, Extraction, Maintenance	53 6.8%	316 8.3%	558 8.3%
Production, Transport Material Moving	171 21.9%	991 26.1%	1,815 27.1%
White Collar Workers	407 52.2%	1,688 44.4%	3,001 44.8%
Blue Collar Workers	373 47.8%	2,114 55.6%	3,705 55.2%

Consumer Expenditure (2014)

	1 Mile	3 Miles	5 Miles
Total Household Expenditure	\$32.1 M	\$158 M	\$284 M
Total Non-Retail Expenditure	\$18.4 M 57.2%	\$90.2 M 57.1%	\$162 M 57.2%
Total Retail Expenditure	\$13.7 M 42.8%	\$67.7 M 42.9%	\$122 M 42.8%
Apparel	\$1.53 M 4.8%	\$7.51 M 4.8%	\$13.5 M 4.7%
Contributions	\$1.06 M 3.3%	\$5.25 M 3.3%	\$9.55 M 3.4%
Education	\$691 K 2.2%	\$3.38 M 2.1%	\$6.01 M 2.1%
Entertainment	\$1.77 M 5.5%	\$8.70 M 5.5%	\$15.7 M 5.5%
Food and Beverages	\$5.06 M 15.8%	\$25.0 M 15.8%	\$44.8 M 15.8%
Furnishings and Equipment	\$1.35 M 4.2%	\$6.59 M 4.2%	\$11.9 M 4.2%
Gifts	\$788 K 2.5%	\$3.85 M 2.4%	\$6.97 M 2.5%
Health Care	\$2.07 M 6.4%	\$10.3 M 6.5%	\$18.5 M 6.5%
Household Operations	\$1.07 M 3.3%	\$5.23 M 3.3%	\$9.44 M 3.3%
Miscellaneous Expenses	\$554 K 1.7%	\$2.72 M 1.7%	\$4.89 M 1.7%
Personal Care	\$469 K 1.5%	\$2.31 M 1.5%	\$4.14 M 1.5%
Personal Insurance	\$303 K 0.9%	\$1.48 M 0.9%	\$2.68 M 0.9%
Reading	\$105 K 0.3%	\$516 K 0.3%	\$928 K 0.3%
Shelter	\$6.16 M 19.2%	\$30.2 M 19.2%	\$54.4 M 19.2%
Tobacco	\$235 K 0.7%	\$1.18 M 0.7%	\$2.10 M 0.7%
Transportation	\$6.53 M 20.3%	\$31.9 M 20.2%	\$57.6 M 20.3%
Utilities	\$2.36 M 7.3%	\$11.7 M 7.4%	\$20.9 M 7.4%

Educational Attainment (2014)

	1 Mile	3 Miles	5 Miles
Adult Population Age 25 Years or Over	1,241	6,308	11,233
Elementary (Grade Level 0 to 8)	60 4.8%	255 4.0%	456 4.1%
Some High School (Grade Level 9 to 11)	100 8.0%	782 12.4%	1,443 12.8%
High School Graduate	736 59.4%	3,612 57.3%	6,215 55.3%
Some College	153 12.3%	785 12.4%	1,450 12.9%
Associate Degree Only	72 5.8%	330 5.2%	586 5.2%
Bachelor Degree Only	70 5.7%	330 5.2%	670 6.0%
Graduate Degree	49 4.0%	215 3.4%	413 3.7%

This report was produced using data from private and government sources deemed to be reliable. The information herein is provided without representation or warranty.

EXPANDED PROFILE

2000-2010 Census, 2014 Estimates with 2019 Projections

Calculated using Proportional Block Groups

Lat/Lon: 40.4106/-81.3461

RF5

305 E Mccauley Dr

Uhrichsville, OH

Units In Structure (2010)

	1 Mile		3 Miles		5 Miles	
1 Detached Unit	623	84.0%	2,804	72.8%	4,929	72.9%
1 Attached Unit	6	0.8%	76	2.0%	137	2.0%
2 to 4 Units	67	9.0%	373	9.7%	503	7.4%
5 to 9 Units	2	0.3%	63	1.6%	122	1.8%
10 to 19 Units	5	0.7%	57	1.5%	115	1.7%
20 to 49 Units	1	0.1%	82	2.1%	126	1.9%
50 or More Units	1	0.2%	14	0.4%	29	0.4%
Mobile Home or Trailer	38	5.1%	381	9.9%	798	11.8%
Other Structure	-	-	-	-	-	-

Homes Built By Year (2010)

Homes Built 2005 or later	18	2.5%	121	3.1%	229	3.4%
Homes Built 2000 to 2004	18	2.4%	147	3.8%	331	4.9%
Homes Built 1990 to 1999	51	6.9%	356	9.2%	760	11.2%
Homes Built 1980 to 1989	45	6.1%	292	7.6%	528	7.8%
Homes Built 1970 to 1979	58	7.9%	375	9.7%	760	11.2%
Homes Built 1960 to 1969	54	7.3%	325	8.4%	573	8.5%
Homes Built 1950 to 1959	109	14.7%	419	10.9%	735	10.9%
Homes Built Before 1949	387	52.2%	1,817	47.2%	2,843	42.1%

Home Values (2010)

Home Values \$1,000,000 or More	1	0.2%	26	1.0%	31	0.6%
Home Values \$500,000 to \$999,999	2	0.5%	10	0.4%	21	0.4%
Home Values \$400,000 to \$499,999	1	0.3%	7	0.3%	25	0.5%
Home Values \$300,000 to \$399,999	4	0.8%	26	1.0%	72	1.5%
Home Values \$200,000 to \$299,999	26	5.1%	146	5.7%	344	7.2%
Home Values \$150,000 to \$199,999	22	4.2%	192	7.4%	496	10.3%
Home Values \$100,000 to \$149,999	93	18.2%	492	19.1%	1,003	20.9%
Home Values \$70,000 to \$99,999	166	32.4%	717	27.8%	1,298	27.0%
Home Values \$50,000 to \$69,999	116	22.6%	484	18.8%	715	14.9%
Home Values \$25,000 to \$49,999	71	13.9%	387	15.0%	568	11.8%
Home Values Under \$25,000	10	1.9%	94	3.6%	234	4.9%
Owner-Occupied Median Home Value	\$80,248		\$85,597		\$95,193	
Renter-Occupied Median Rent	\$454		\$435		\$434	

Transportation To Work (2010)

Drive to Work Alone	632	86.9%	3,088	85.0%	5,592	86.7%
Drive to Work in Carpool	36	5.0%	258	7.1%	428	6.6%
Travel to Work by Public Transportation	-	0.1%	9	0.2%	19	0.3%
Drive to Work on Motorcycle	-	-	-	-	2	-
Walk or Bicycle to Work	17	2.3%	84	2.3%	134	2.1%
Other Means	14	1.9%	46	1.3%	56	0.9%
Work at Home	28	3.9%	146	4.0%	216	3.4%

Travel Time (2010)

Travel to Work in 14 Minutes or Less	265	38.0%	1,278	36.7%	2,239	35.9%
Travel to Work in 15 to 29 Minutes	229	32.8%	1,367	39.2%	2,561	41.1%
Travel to Work in 30 to 59 Minutes	156	22.3%	665	19.1%	1,143	18.3%
Travel to Work in 60 Minutes or More	48	6.9%	176	5.0%	288	4.6%
Average Minutes Travel to Work	19.9		19.0		18.9	

This report was produced using data from private and government sources deemed to be reliable. The information herein is provided without representation or warranty.