

14,000 SF Retail Space - 9 Units



485 Jimmy DeLoach Pkwy.
Pooler, Georgia 31322

Property Features

Scheduled for completion in early 2025, the new 14,000-square-foot shopping center at the corner of Jimmy DeLoach Boulevard and Benton Boulevard in Port Wentworth, GA, will feature 8 to 9 retail units. Its strategic location offers easy access for local residents, just minutes from nearby neighborhoods, making it a convenient shopping destination. Additionally, it's a short drive from Savannah/Hilton Head International Airport, appealing to both locals and travelers. With ample parking and effortless accessibility, this vibrant center is set to become a bustling hub for the community.



- High Traffic Area-14k Vehicles Per Day
- Brand New Retail Development
- Monument Signage

Zack Allen

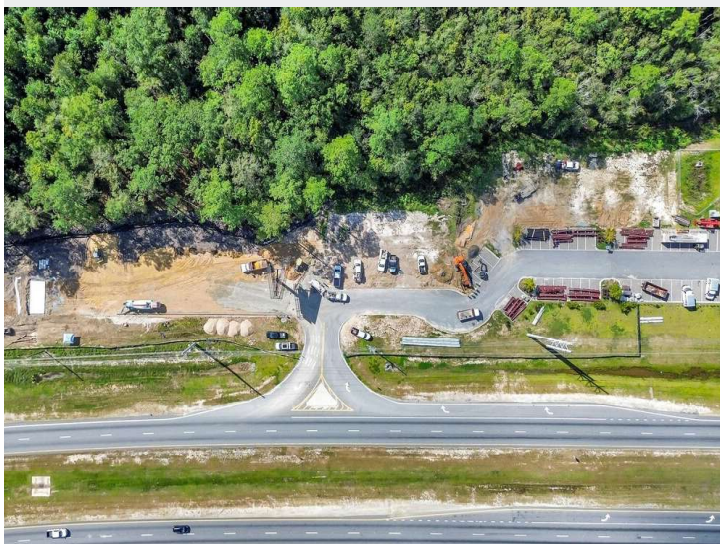
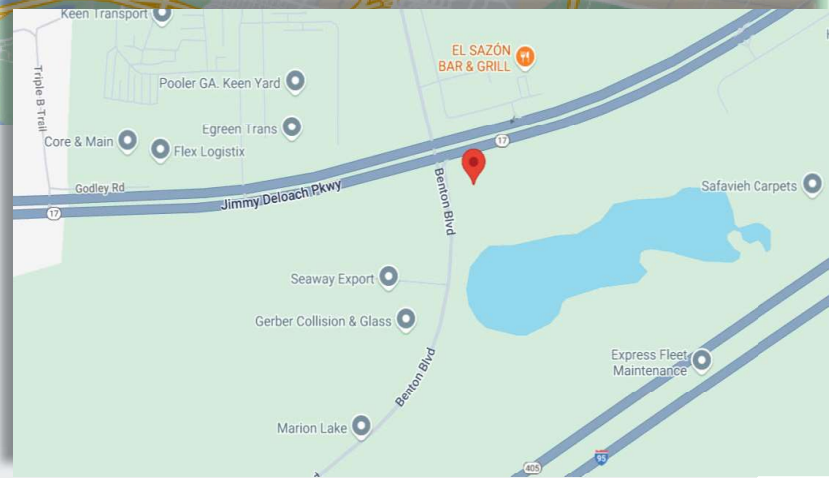
+1 912 655 2135 • zallen@naisavannah.com

Benjamin Miles

+1 912 321 0152 • benjimiles@icloud.com

For more information:

FOR SALE
FOR LEASE



For more information:

Zack Allen

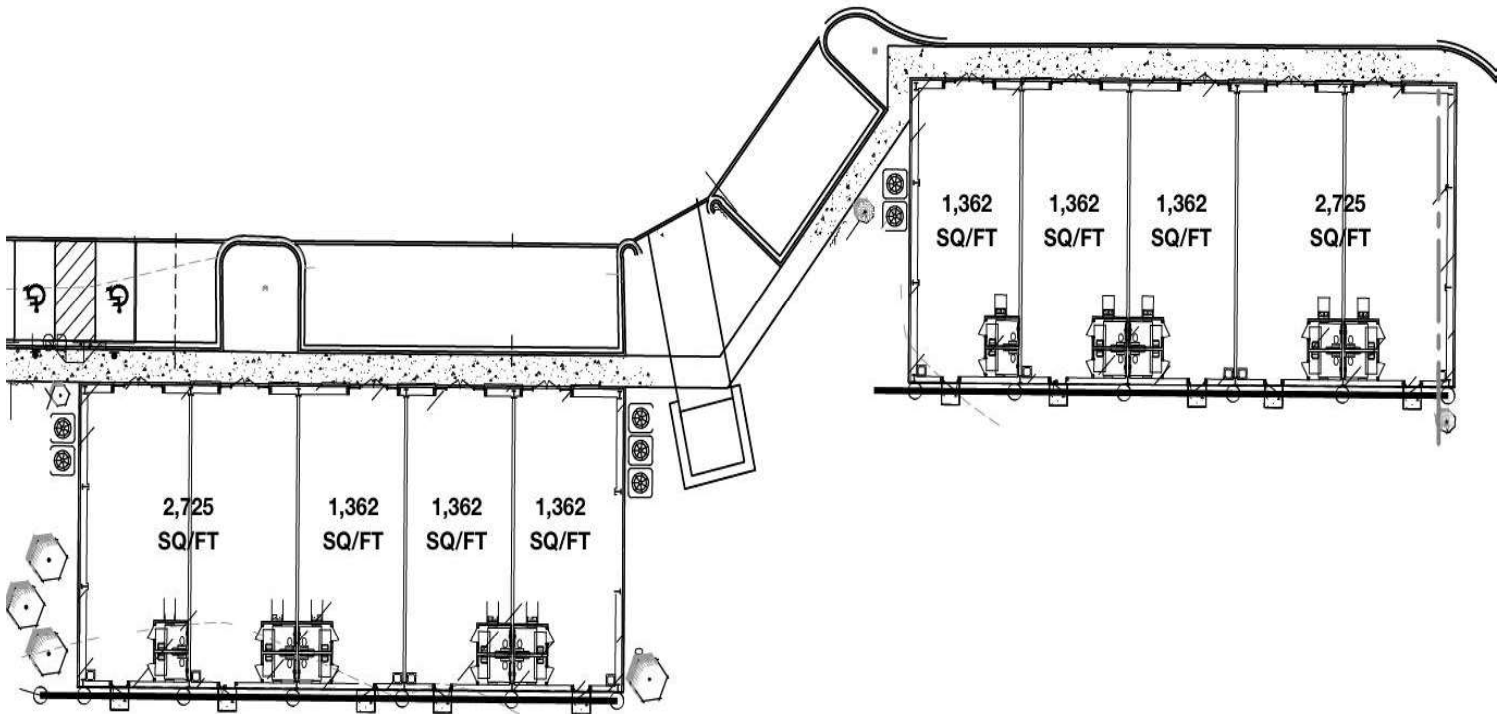
+1 912 655 2135 • zallen@naisavannah.com

Benjamin Miles

+1 912 321 0152 • benjimiles@icloud.com



FOR SALE
FOR LEASE



For more information:

Zack Allen

+1 912 655 2135 • zallen@naisavannah.com

Benjamin Miles

+1 912 321 0152 • benjimiles@icloud.com

