



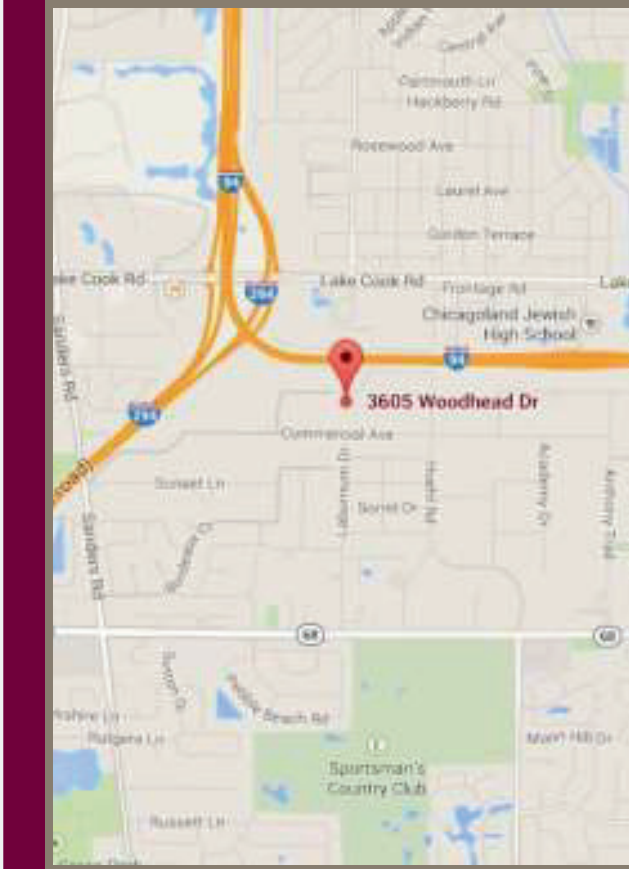
# AVAILABLE FOR LEASE

3605 WOODHEAD DR. UNIT 106 & 115 | NORTHBROOK

*Available NOW!*

- 366-1,634 SF Available.
- Landlord will build to suit.
- AT&T Fiber now installed in building.
- Plenty of parking, 24-hour access, signage on Woodhead Dr, dog-friendly building
- Common area washrooms and lunchroom with vending machines.

*Professionally managed by  
Key Investment & Management Inc.*



**366  
+/-1,634 SF  
OFFICE SPACE**

*\$11.99 PSF  
Modified Gross*



*for further information contact:*

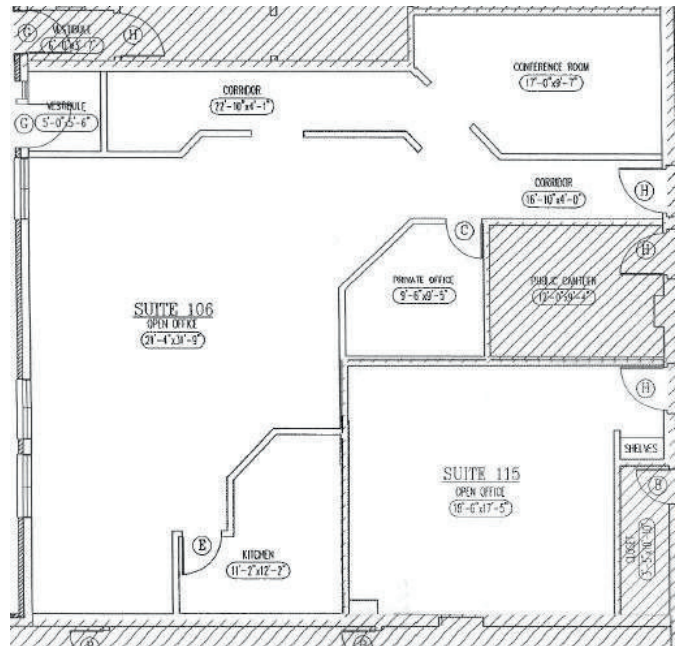
O: 630.932.5757

1263 S Highland Ave. SUITE 2W  
Lombard, IL 60148

# FOR LEASE 3605 WOODHEAD DR. UNIT 106 & 115 | NORTHBROOK

## Property Specifications

Building Size:	21,070 SF
Available Space:	366-1,634 SF (Office)
Year Built:	1972
Zoning:	C-3
Parking:	Open Lot
Ceiling Height:	10'
Power:	200 AMP
Washrooms:	2 Common Area
Sprinklered:	No
Utilities:	Pro-rated gas, electric
Real Estate Taxes:	Included
CAM:	Included
Possession:	Immediate
Lease Term:	Minimum 2 Years
Lease Rate:	\$11.99 PSF Modified Gross \$366.00- \$1,634.00/MO.



Dimensions are approximate and not drawn to scale.



for further information contact:

O: 630.932.5757

1263 S Highland Ave. SUITE 2W  
Lombard, IL 60148