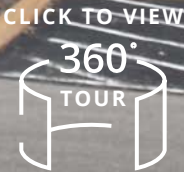


REDUCED RATE



FOR SUBLEASE

2266 Ball Drive

St. Louis, MO 63146

Sublease Rate:

~~\$8.35~~

\$6.35 PSF, NNN

CONTACT US

Tony Kennedy, ccim

Senior Vice President
+1 314 630 4152
tony.kennedy@colliers.com

Carter Kennedy

Senior Vice President
+1 415 310 7762
carter.kennedy@colliers.com

Colliers

101 South Hanley Road
Suite 1400
St. Louis, MO 63105
+1 314 863 4447
colliers.com/stlouis

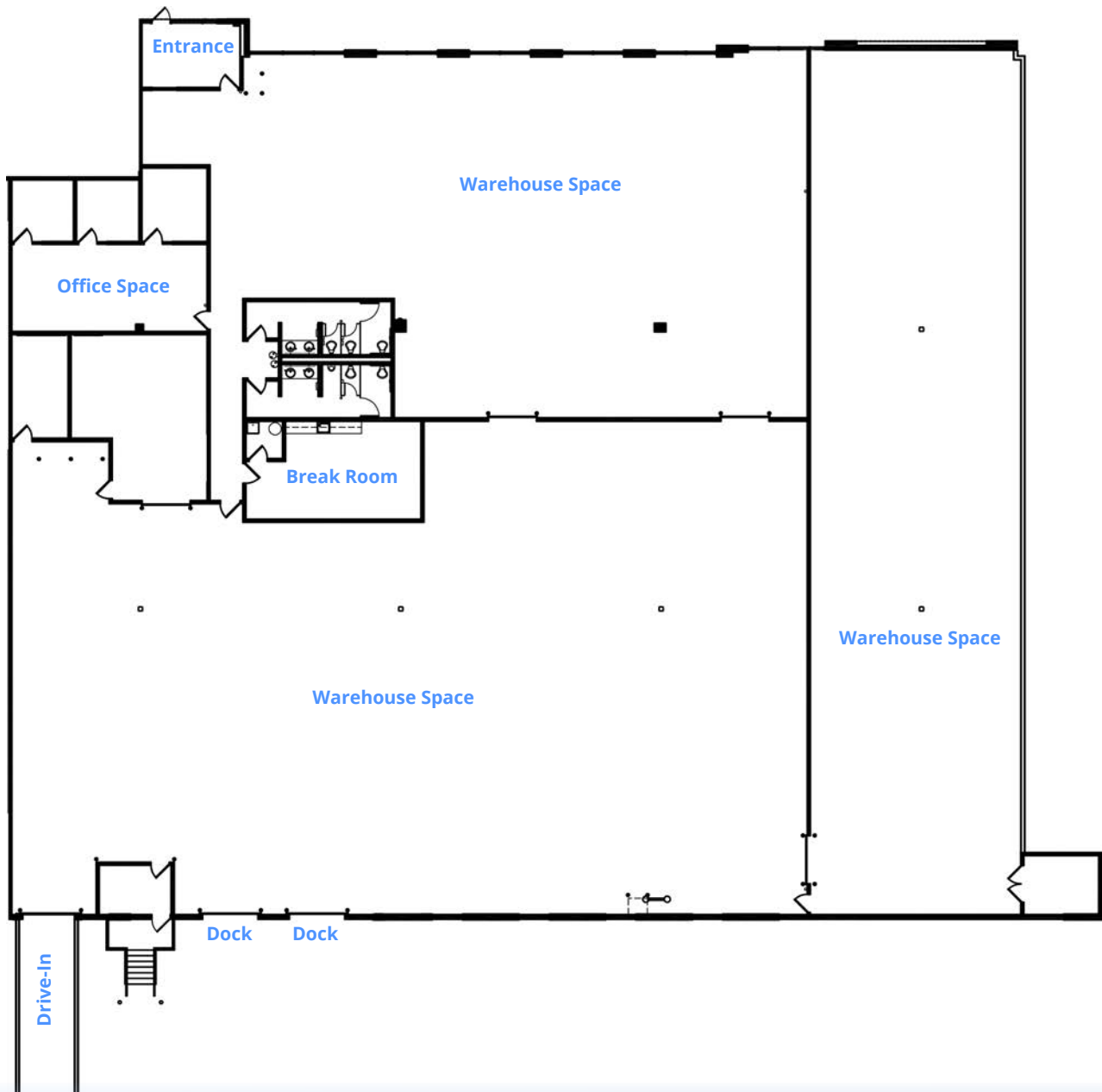
Prime Warehouse Space Available for Sublease in Westport

Highlights

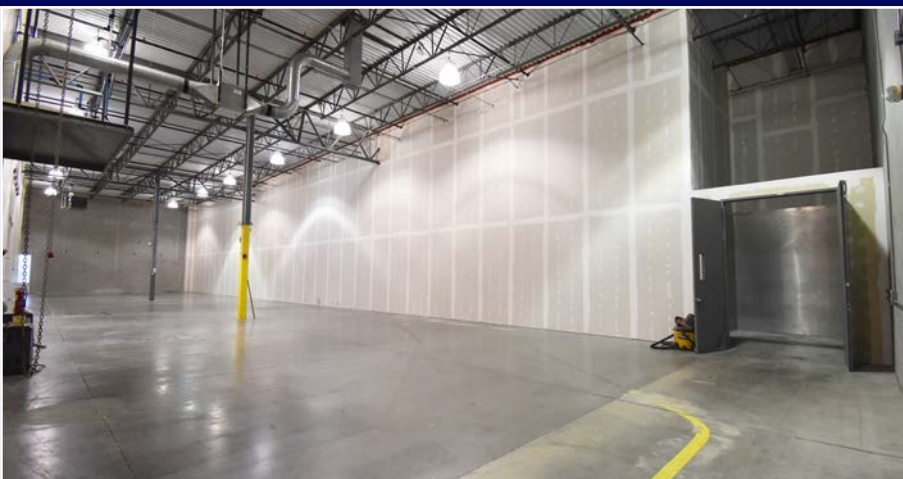
- 22,799 SF available for sublease
- Sublease term thru 2/28/2027
- 3 private offices
- 20' clear height
- 2 dock doors, 1 drive-in door
- ESFR
- Located in the Westport submarket with a surplus of area amenities
- Convenient access to Page Avenue, Lindbergh Boulevard, Dorsett Road, and Interstate 270

FLOOR PLAN

CLICK TO VIEW



PROPERTY PHOTOS



LOCATION



CONTACT US

Tony Kennedy, ccim

Senior Vice President
+1 314 630 4152
tony.kennedy@colliers.com

Carter Kennedy

Senior Vice President
+1 415 310 7762
carter.kennedy@colliers.com

Colliers

101 South Hanley Road
Suite 1400
St. Louis, MO 63105
+1 314 863 4447
colliers.com/stlouis

This document/email has been prepared by Colliers for advertising and general information only. Colliers makes no guarantees, representations or warranties of any kind, expressed or implied, regarding the information including, but not limited to, warranties of content, accuracy and reliability. Any interested party should undertake their own inquiries as to the accuracy of the information. Colliers excludes unequivocally all inferred or implied terms, conditions and warranties arising out of this document and excludes all liability for loss and damages arising there from. This publication is the copyrighted property of Colliers and /or its licensor(s). © 2024. All rights reserved. This communication is not intended to cause or induce breach of an existing listing agreement.