



2760

118

106

100

**FOR SALE**

New Construction Office/Warehouse  $\pm 12,052$  SF

2760 S La Luna | Goodyear, AZ 85338





# New Construction Warehouse/Office ±12,052 SF

2760 S La Luna | Goodyear, AZ



**FOR SALE**

12,052 SF

Building Size

1.16 Acres

Land Size

50%

Occupancy

\$7,000,000

Pricing

\$1.30/PSF + \$.20/NNN

Lease Rate

## PROPERTY HIGHLIGHTS

Available SF	12.052
Zoning	Light Industrial, Goodyear
APN#	500-08-987
Grade Level	4 (12'x14')
Power	1200 A, 277/480 V
Parking Spaces	31
Parking Ratio	2.57/1,000

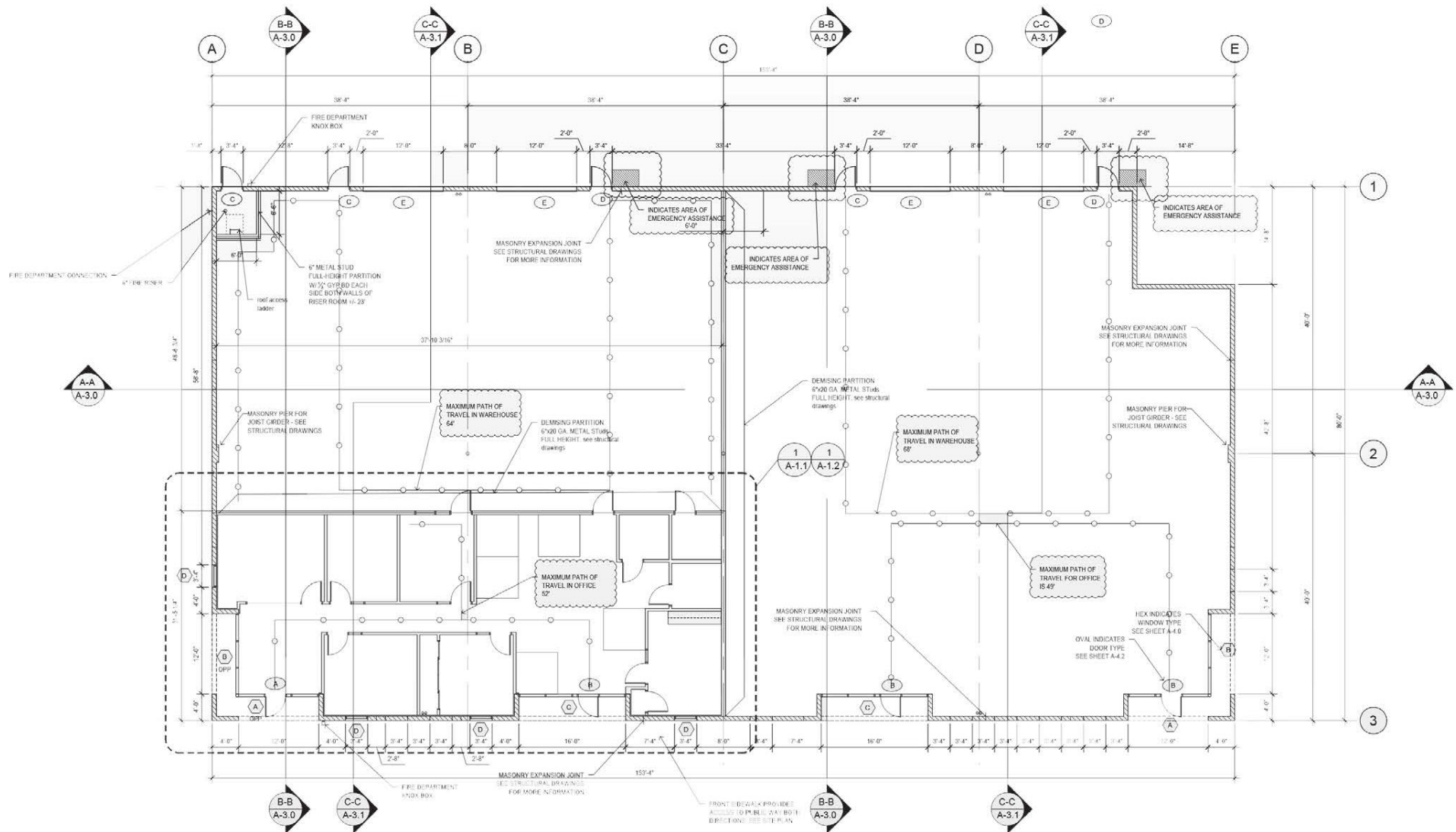
## ABOUT THE PROPERTY

- High-image, free-standing building
- Fee simple ownership
- Private, secured yard
- LED warehouse lighting
- Wet sprinkler system
- 1200 Amp, 277/480 Volt
- Close proximity to MC 85 Highway, Interstates 8 & 10, and Phoenix Goodyear Airport
- High accessible to the Inland Empire, Buckeye, Avondale, Tolleson, Goodyear and Phoenix

# New Construction Warehouse/Office ±12,052 SF

2760 S La Luna | Goodyear, AZ

## FLOOR PLAN





# New Construction Warehouse/Office ±12,052 SF

2760 S La Luna | Goodyear, AZ





# New Construction Warehouse/Office ±12,052 SF

2760 S La Luna | Goodyear, AZ



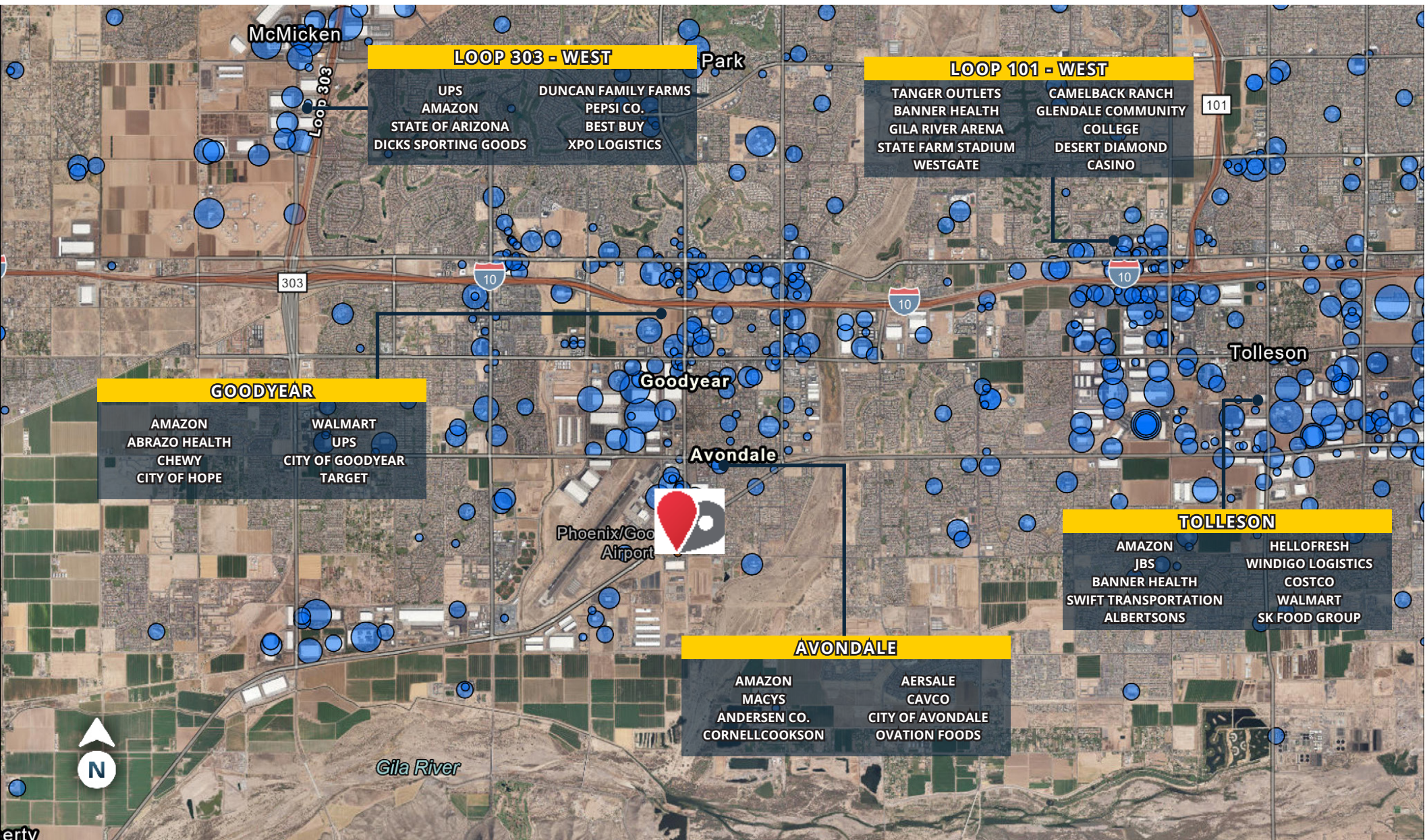


# New Construction Warehouse/Office ±12,052 SF

2760 S La Luna | Goodyear, AZ



## TOP EMPLOYERS MAP





# New Construction Warehouse/Office ±12,052 SF

2760 S La Luna | Goodyear, AZ



## DEMOGRAPHIC HIGHLIGHTS

### Population

	1 Mile	3 Miles	5 Miles
2024 Estimated Population	4,947	57,553	171,557
2029 Projected Population	4,969	64,498	192,304
Proj. Annual Growth 2024 to 2029	0.09%	2.30%	2.31%

### Daytime Population

2024 Daytime Population	4,362	51,582	136,409
Workers	1,365	22,453	48,856
Residents	2,997	29,129	87,553

### Income

2024 Est. Average Household Income	\$73,727	\$96,995	\$117,182
2024 Est. Median Household Income	\$52,467	\$79,462	\$92,432

### Households & Growth

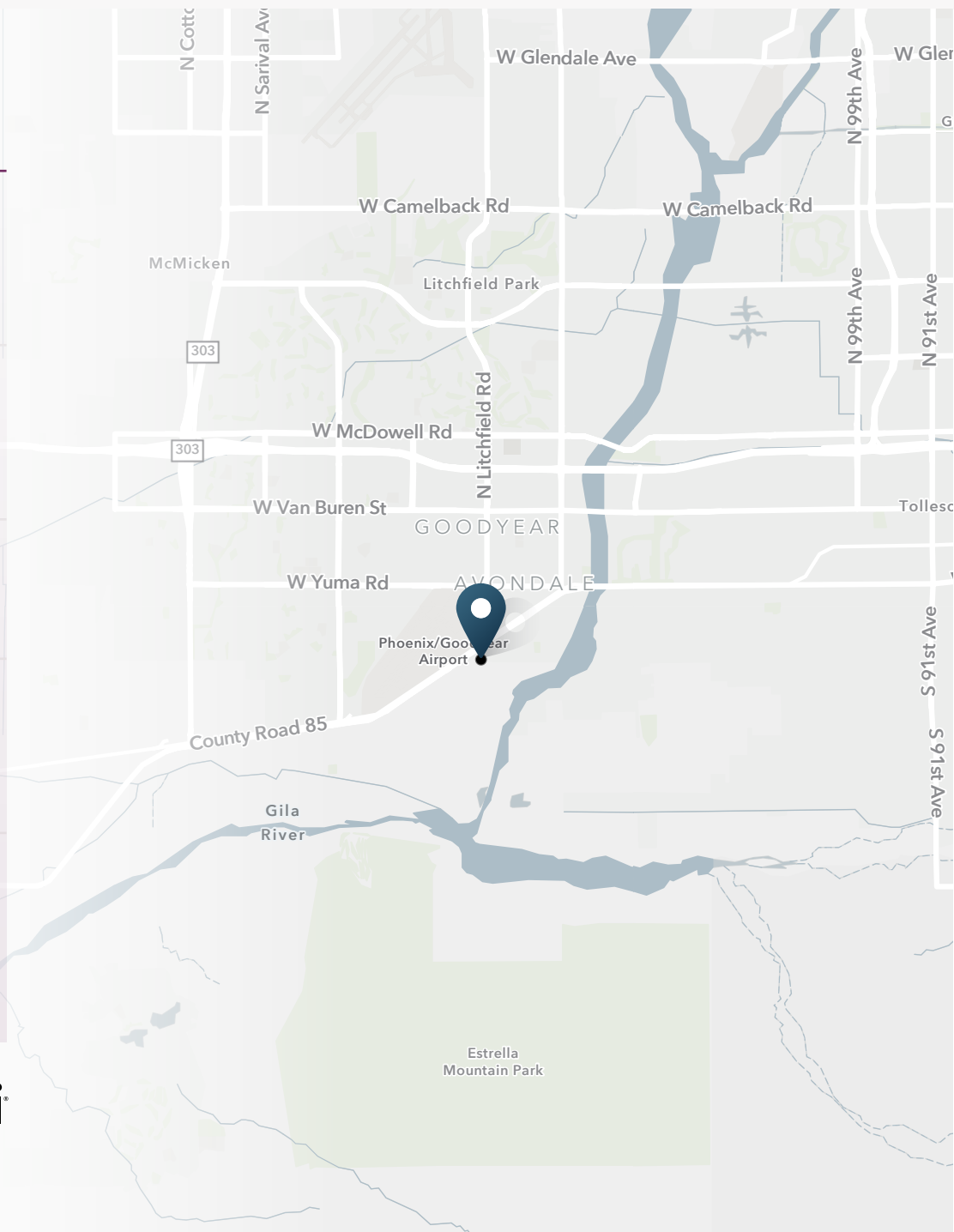
2024 Estimated Households	1,457	17,732	54,757
2029 Estimated Households	1,478	20,241	62,433
Proj. Annual Growth 2024 to 2029	0.29%	2.68%	2.66%

### Race & Ethnicity

2024 Est. White	27%	37%	42%
2024 Est. Black or African American	8%	10%	9%
2024 Est. Asian or Pacific Islander	1%	3%	4%
2024 Est. American Indian or Native Alaskan	2%	2%	2%
2024 Est. Other Races	62%	48%	43%
2024 Est. Hispanic (Any Race)	79%	59%	51%

> **Want more?** Contact us for a complete demographic, foot-traffic, and mobile data insights report.

SOURCE





**SRS Industrial, Phoenix**  
3131 E Camelback Road, Suite 110  
Phoenix, AZ 85016

**Jeffrey Garza Walker, MRED/MBA**  
602.509.4700  
jgw@srsre.com

**Ivan Garcia**  
602.638.9209  
ivan.garcia@srsre.com

**[SRSRE.COM/Industrial](https://www.srsre.com/Industrial)**

© SRS Real Estate Partners

The information presented was obtained from sources deemed reliable;  
however SRS Real Estate Partners does not guarantee its completeness or accuracy.