



**FOR LEASE**

# 20,800 SF AVAILABLE Truck Maintenance Facility

## Key Features

- 20,800 sf truck maintenance facility on 1.8-acre site
- 20' eave height
- 16 roll-up doors (12x12)
- 1 drive thru bay (20x20)
- 260' x 80' building dimensions

## Location Highlights

- 1 mile to GA Ports Authority Garden City Terminal
- Excellent access to Highway 21 and Jimmy Deloach Parkway



**Stephen Ezelle, SIOR**  
**Partner**

+1 912 441 3083  
sezelle@gilbertezelle.com

**820 Abercorn Street**  
**Savannah, GA 31401**

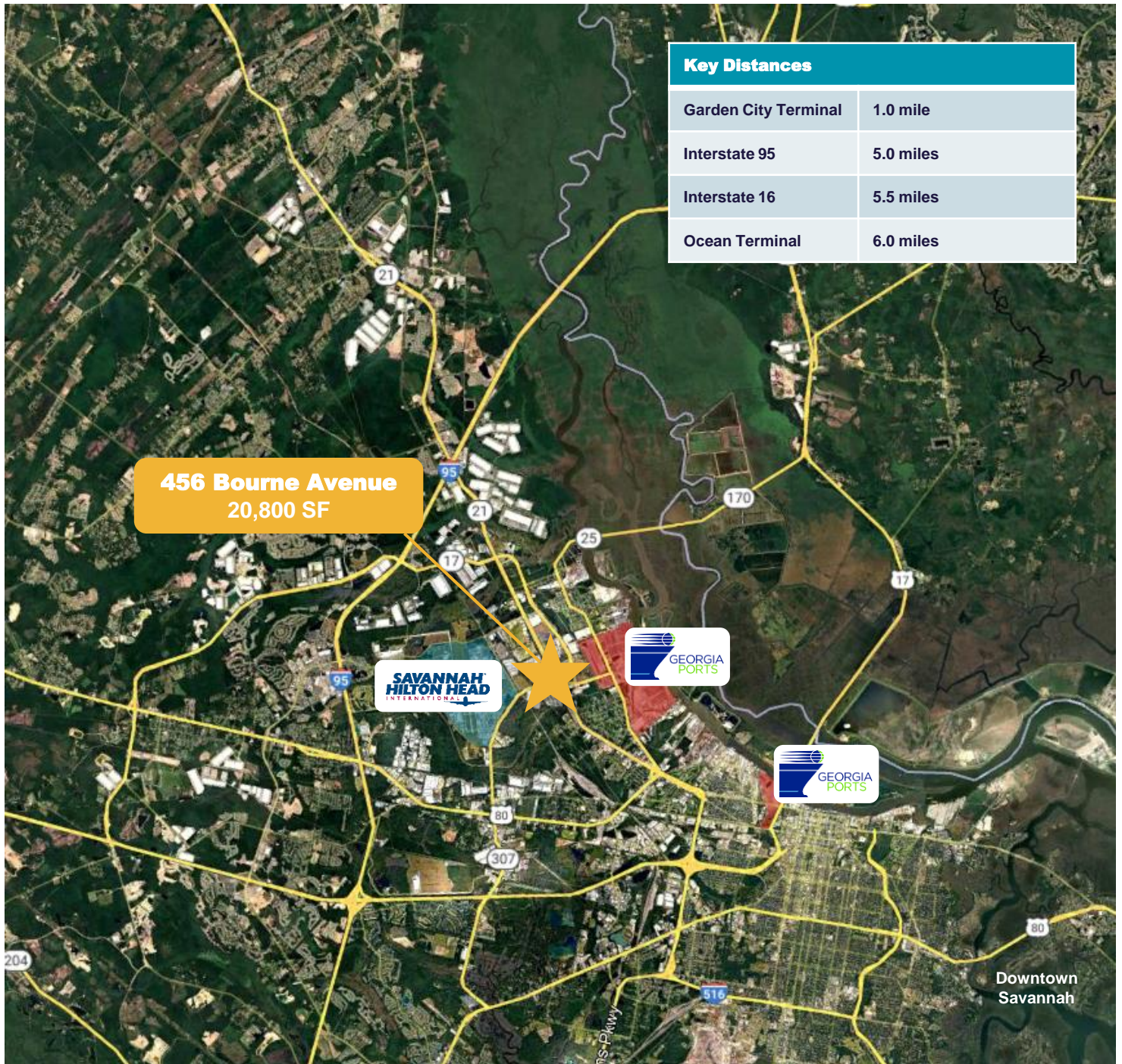
+1 912 236 8992  
gilbertezelle.com

**cushmanwakefield.com**









## FOR MORE INFORMATION

**Stephen Ezelle, SIOR**  
**Partner**  
+1 912 441 3083  
sezelle@gilbertezelle.com

**820 Abercorn Street**  
**Savannah, GA 31401**  
+1 912 236 8992

[gilbertezelle.com](http://gilbertezelle.com)