

# OFFICE LEASE LOCATION

1106 DOUGLAS ST.  
STE A  
LONGVIEW, WA 98632

PER  
MONTH +  
UTILITIES

\$ **2,200**

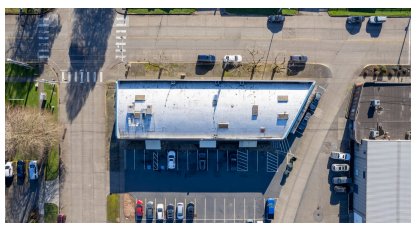
SUITE  
SIZE

SF **3,141**



## ABOUT THE PROPERTY

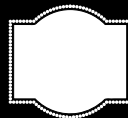
Move-in ready office with 3,141 SF spread over two floors. The ground floor is 1,950 SF with 6 offices, a conference room, 2 restrooms and a reception/waiting area. The second floor is approx. 1,191 SF set up with 7 offices, and a conference room. This suite sits on the corner with excellent visibility & Signage plus plenty of onsite private parking. Asking lease rate is \$2,200 per month plus utilities. Call today to set-up your tour and reserve this suite.



## PROPERTY DETAIL



GOOD  
PARKING



EXCELLENT  
SIGNAGE

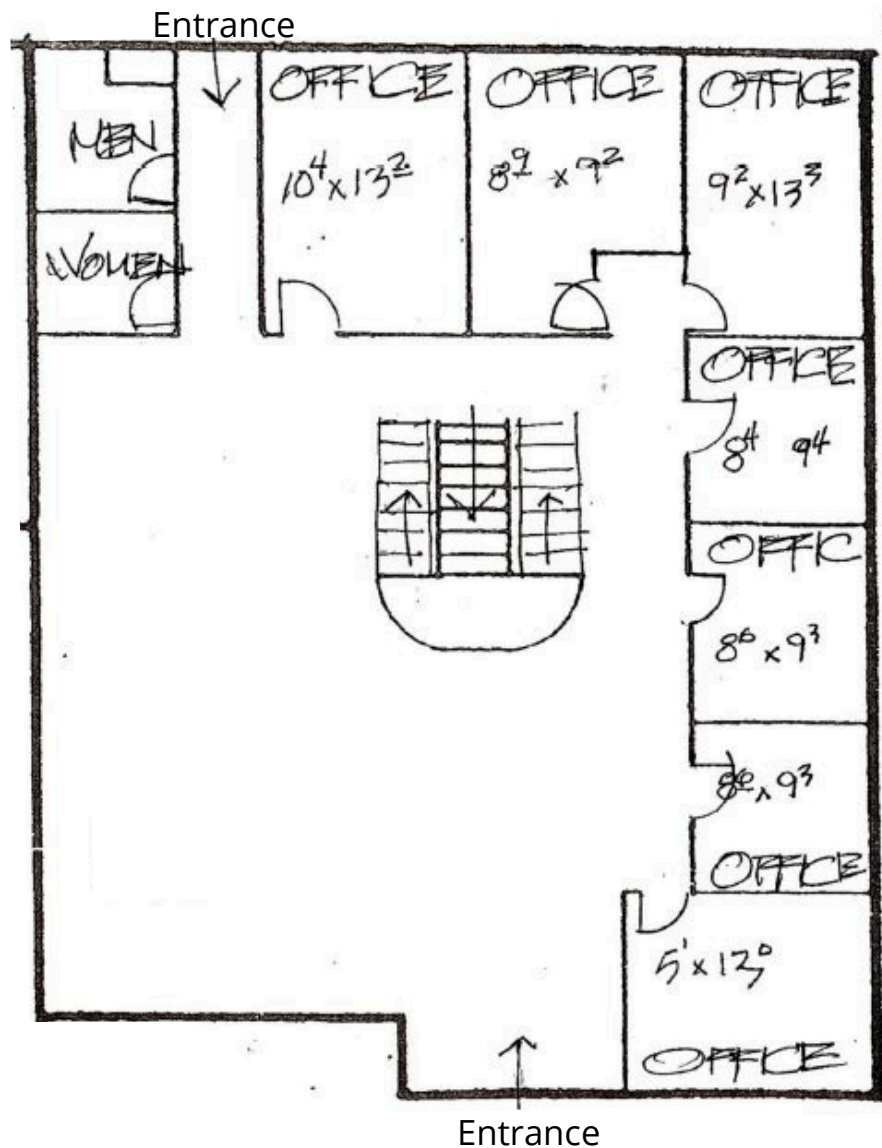


PARCEL  
08757



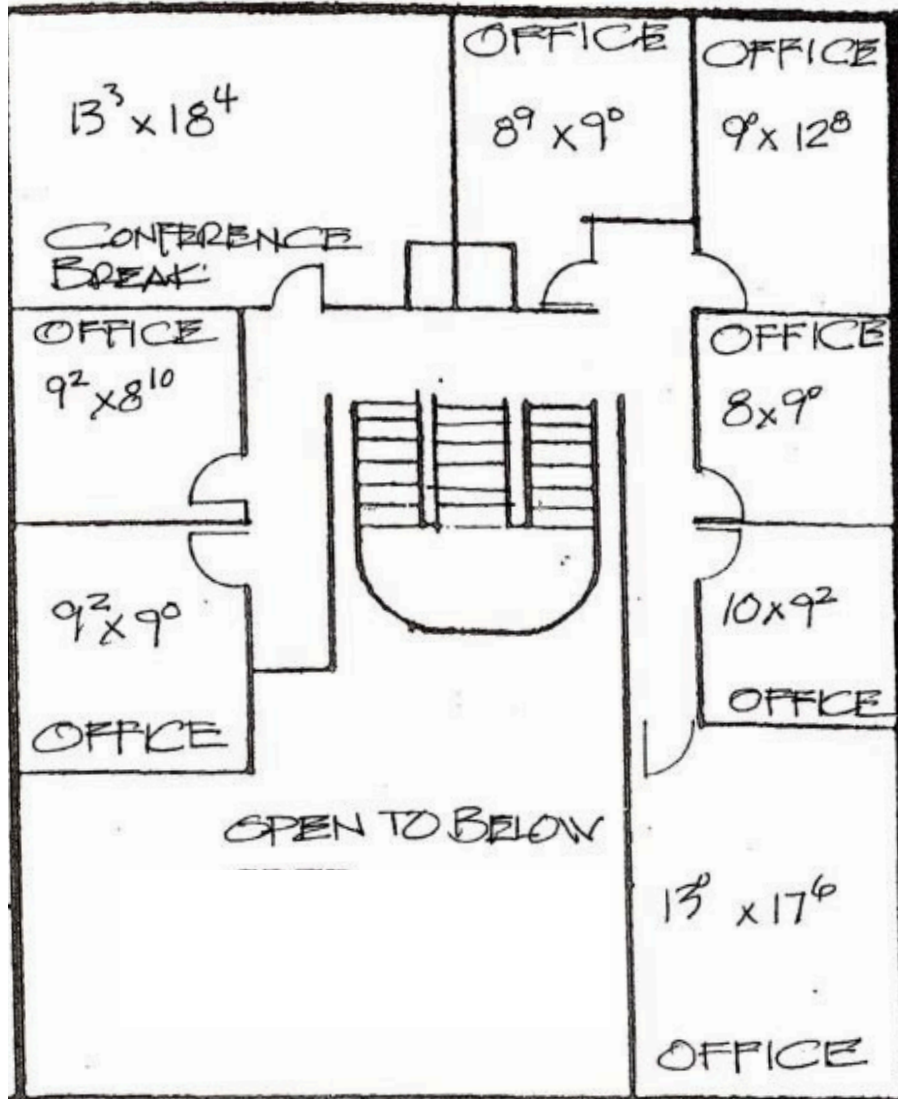
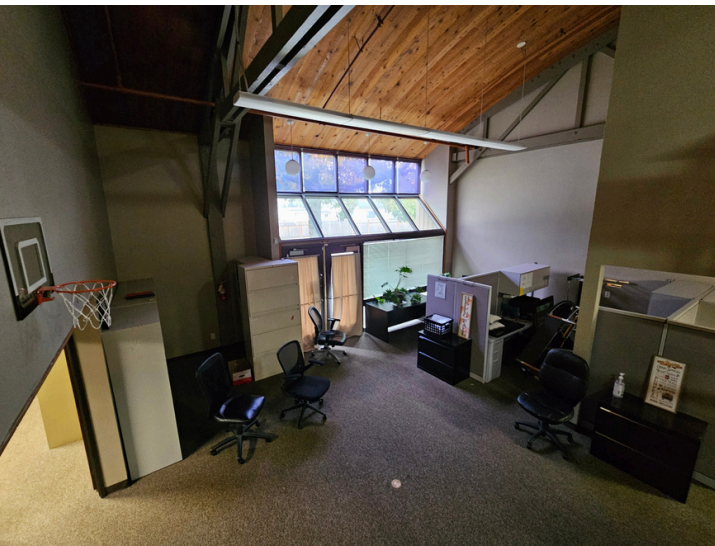
CLOSE TO  
INTERSTATE 5

# GROUND FLOOR



The information contained herein has been obtained from sources we understand to be reliable. Whilst we do not doubt its accuracy it has not been verified & we make no guarantees, warranty or representations about it. Any projections, opinions, assumptions or estimates used are for example only. You & your advisors should conduct a careful independent investigation of the property to determine the property's satisfaction to your needs. © Woodford Commercial Real Estate.





The information contained herein has been obtained from sources we understand to be reliable. Whilst we do not doubt its accuracy it has not been verified & we make no guarantees, warranty or representations about it. Any projections, opinions, assumptions or estimates used are for example only. You & your advisors should conduct a careful independent investigation of the property to determine the property's satisfaction to your needs. © Woodford Commercial Real Estate.