

# LEASE

## THE CONTINUUM

491 W University Ave Gainesville, FL 32601



### PROPERTY DESCRIPTION

PRIME location in the heart of Gainesville between the University of Florida campus and downtown. Walkable to many amenities including the 4th Avenue Food park, Innovation Square and the Santa Fe College downtown location. Also adjacent to the 6th Street Rail-to-Trail bike path and has easy access to bus routes. The commercial space is part of the 433-unit apartment complex for UF graduate students and staff.

### PROPERTY HIGHLIGHTS

- Prime location on W University Ave
- Modern and well-maintained building
- Versatile floor plan for various business needs
- Ample parking for tenants and customers
- High visibility
- Close proximity to major transportation routes

### OFFERING SUMMARY

Available SF:	2,061 - 3,025 SF
Lot Size:	4.38 Acres
Building Size:	444,350 SF
Zoning:	CCD
Lease Type:	NNN (\$5.74/SF)
Traffic Count:	19500 AADT

SPACES	LEASE RATE	TYPE	SPACE SIZE
Suite 110	\$21.00 SF/yr	NNN	3,025 SF
Suite A	\$25.00 SF/yr	NNN	2,061 SF

**Craig Carter**

352.339.4038

ccarter@mmparrish.com

**Dean R. Cheshire**

352.745.1883

Dean@mmparrish.com

**Michelle Carter**

352.339.5734

mcarter@mmparrish.com



**COLDWELL BANKER  
COMMERCIAL**  
M.M. PARRISH REALTORS



# LEASE

## THE CONTINUUM

491 W University Ave Gainesville, FL 32601



**Craig Carter**  
352.339.4038  
ccarter@mmparrish.com

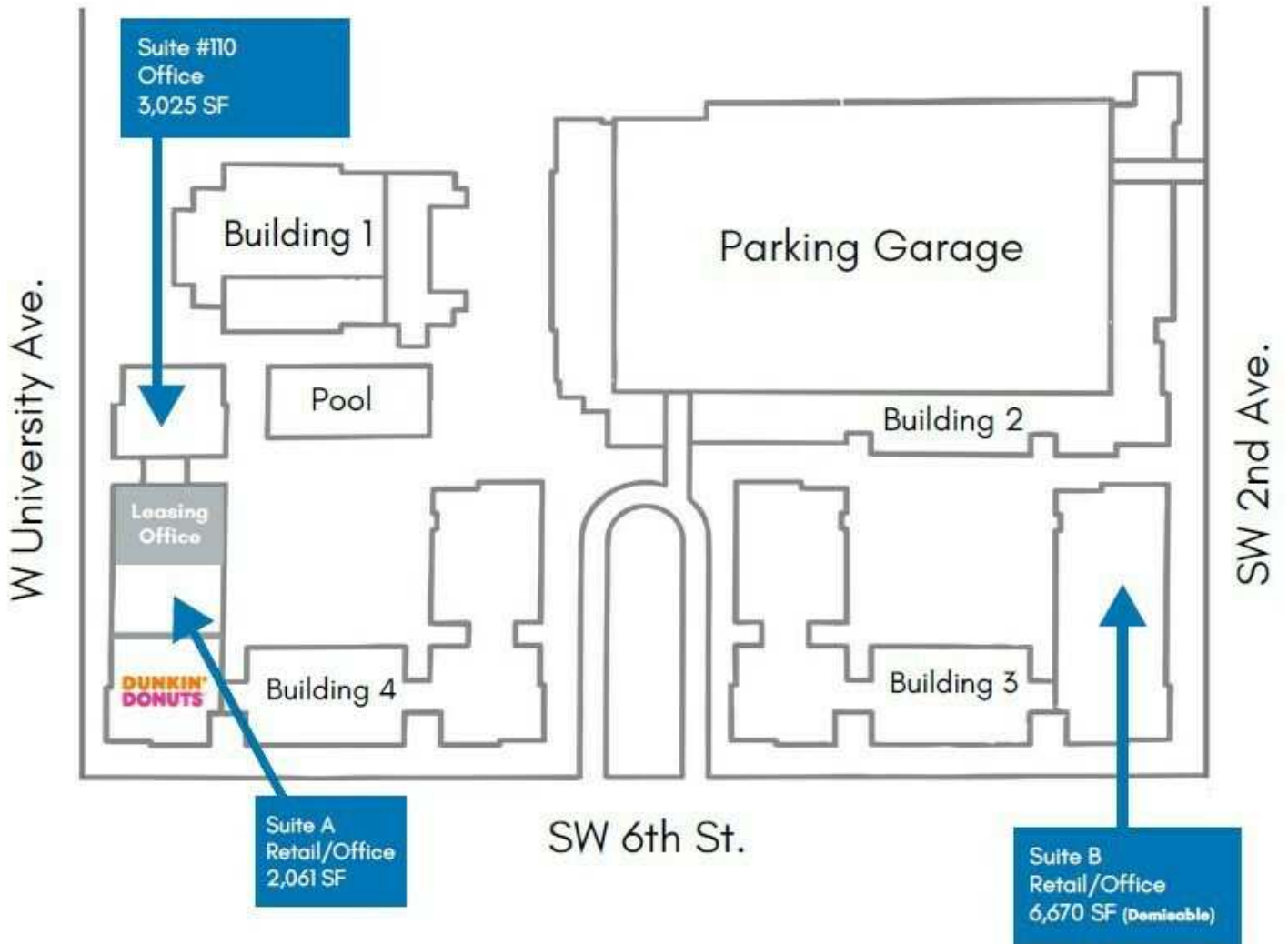
**Dean R. Cheshire**  
352.745.1883  
Dean@mmparrish.com

**Michelle Carter**  
352.339.5734  
mcarter@mmparrish.com



**COLDWELL BANKER  
COMMERCIAL**  
M.M. PARRISH REALTORS

# The Continuum



**Craig Carter**  
352.339.4038  
ccarter@mmparrish.com

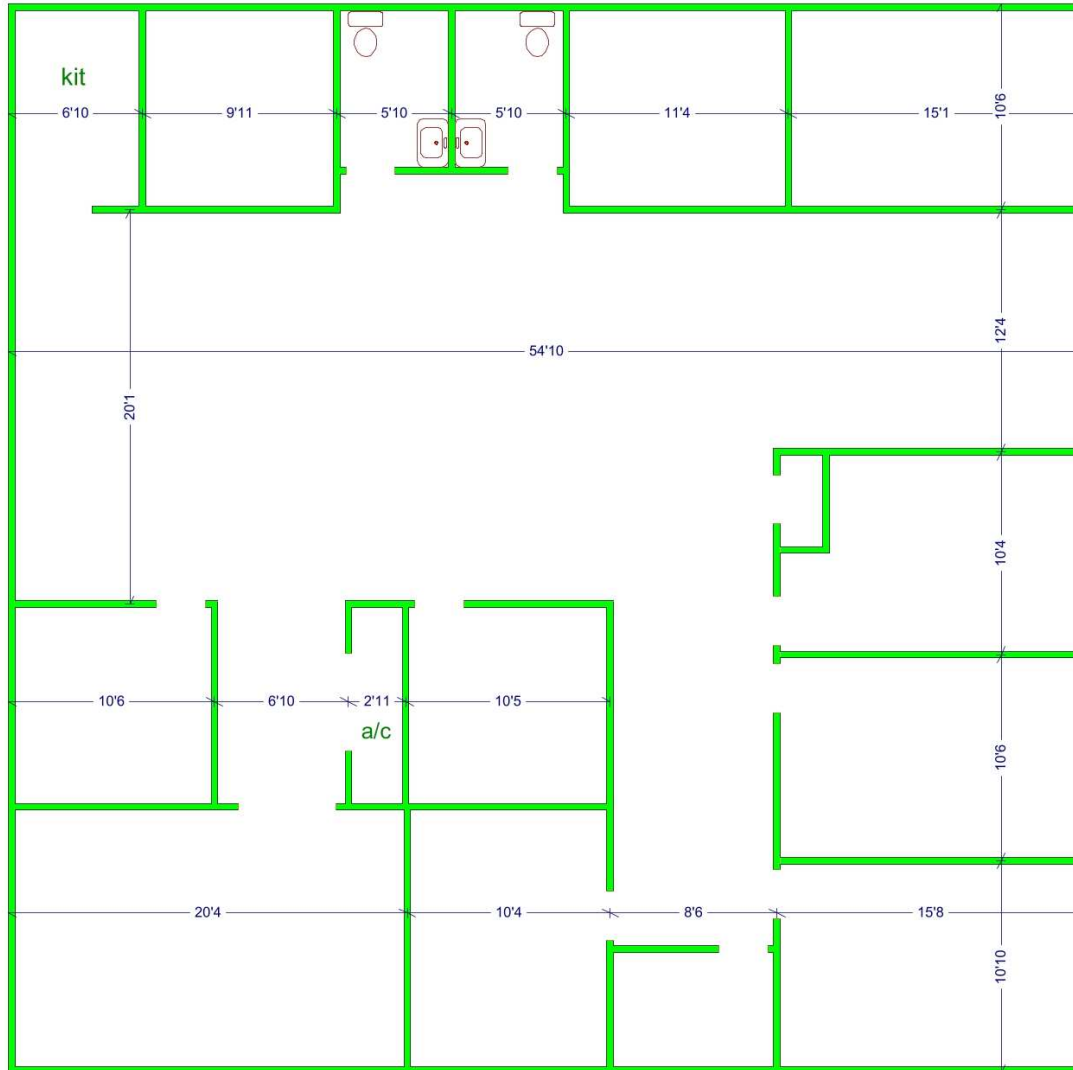
**Dean R. Cheshire**  
352.745.1883  
Dean@mmparrish.com

**Michelle Carter**  
352.339.5734  
mcarter@mmparrish.com



**COLDWELL BANKER  
COMMERCIAL**  
M.M. PARRISH REALTORS

## Suite 110 (3,025 SF)



**Craig Carter**  
352.339.4038  
ccarter@mmparrish.com

**Dean R. Cheshire**  
352.745.1883  
Dean@mmparrish.com

**Michelle Carter**  
352.339.5734  
mcarter@mmparrish.com



**COLDWELL BANKER  
COMMERCIAL**  
M.M. PARRISH REALTORS

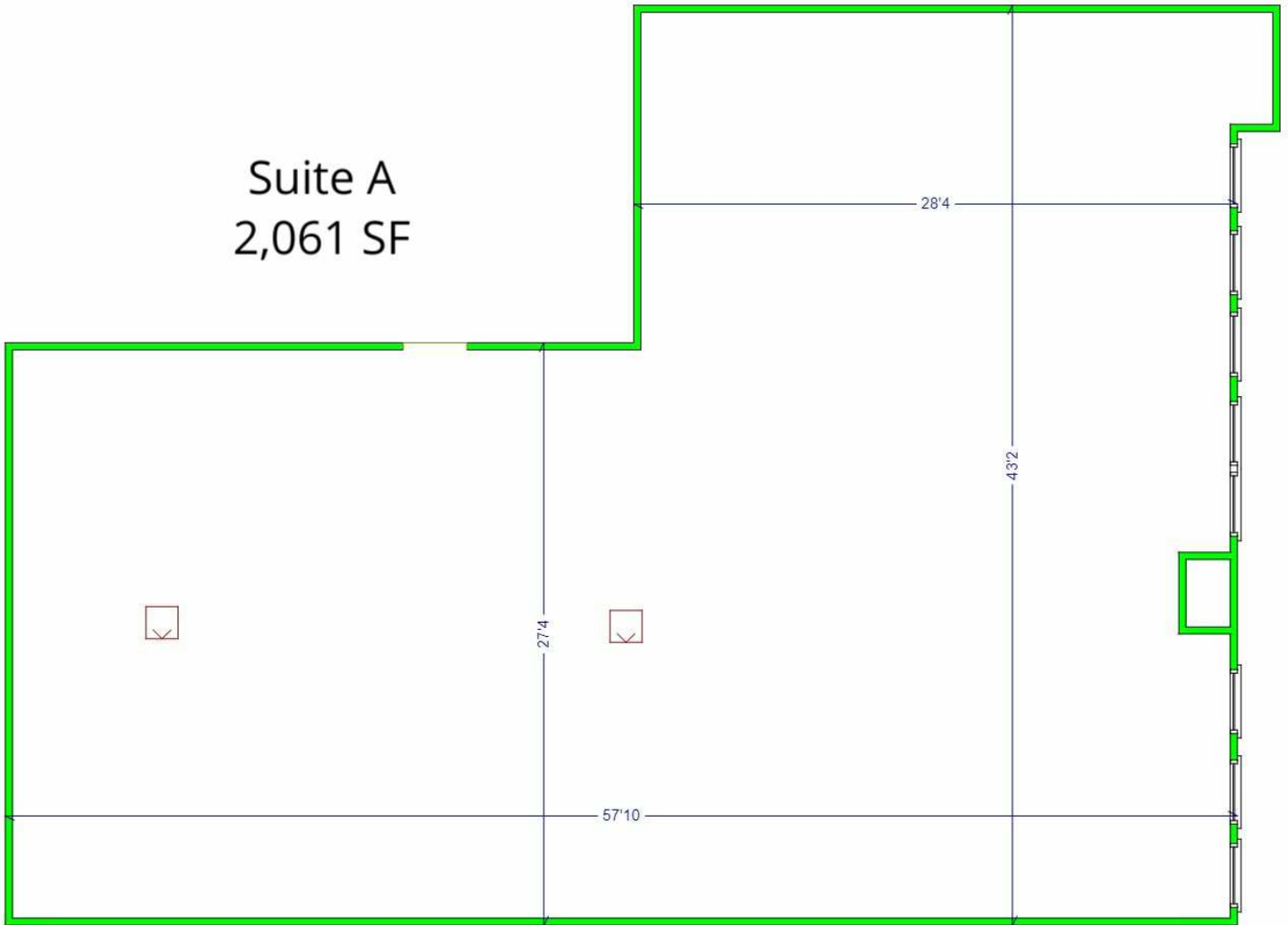


# LEASE

THE CONTINUUM

491 W University Ave Gainesville, FL 32601

Suite A  
2,061 SF



**Craig Carter**

352.339.4038

ccarter@mmparrish.com

**Dean R. Cheshire**

352.745.1883

Dean@mmparrish.com

**Michelle Carter**

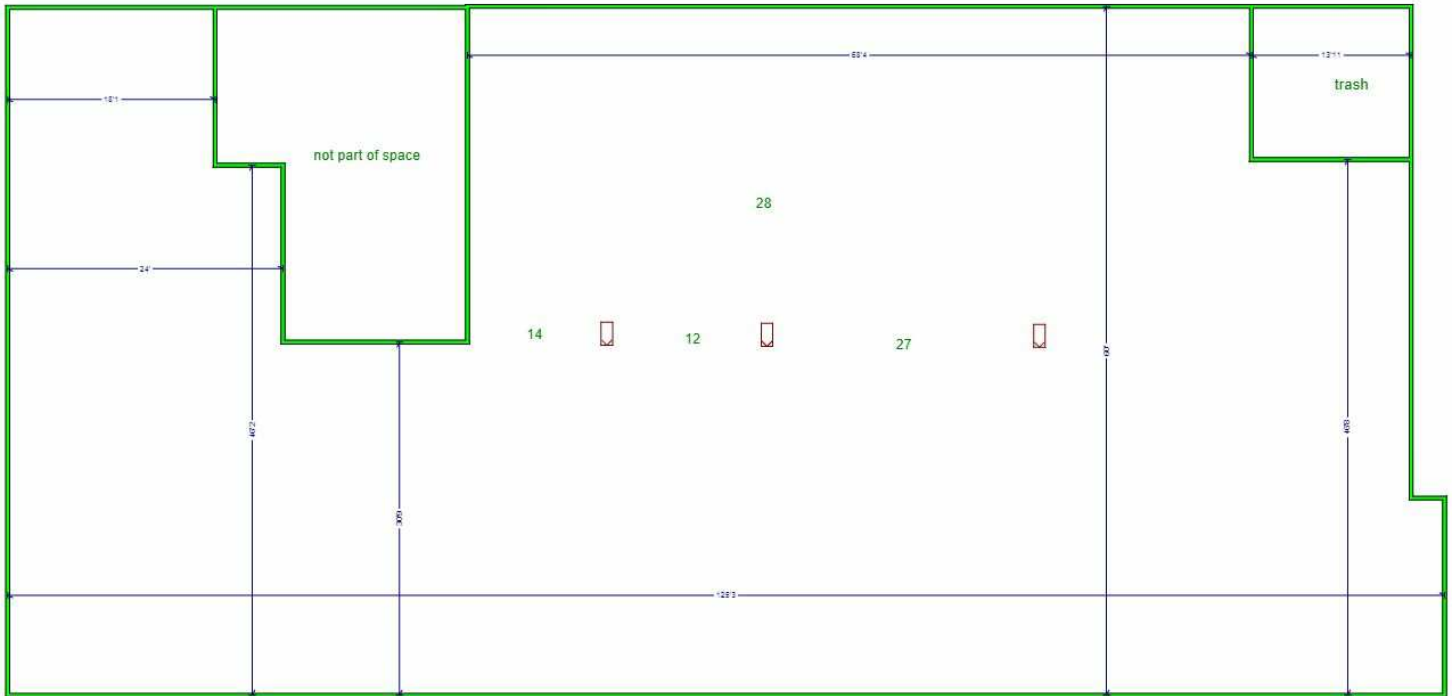
352.339.5734

mcarter@mmparrish.com



**COLDWELL BANKER  
COMMERCIAL**  
M.M. PARRISH REALTORS

### Suite B 6,670 SF (Demisable)



LIVING AREA  
7,448 sq ft

**Craig Carter**

352.339.4038

ccarter@mmparrish.com

**Dean R. Cheshire**

352.745.1883

Dean@mmparrish.com

**Michelle Carter**

352.339.5734

mcarter@mmparrish.com

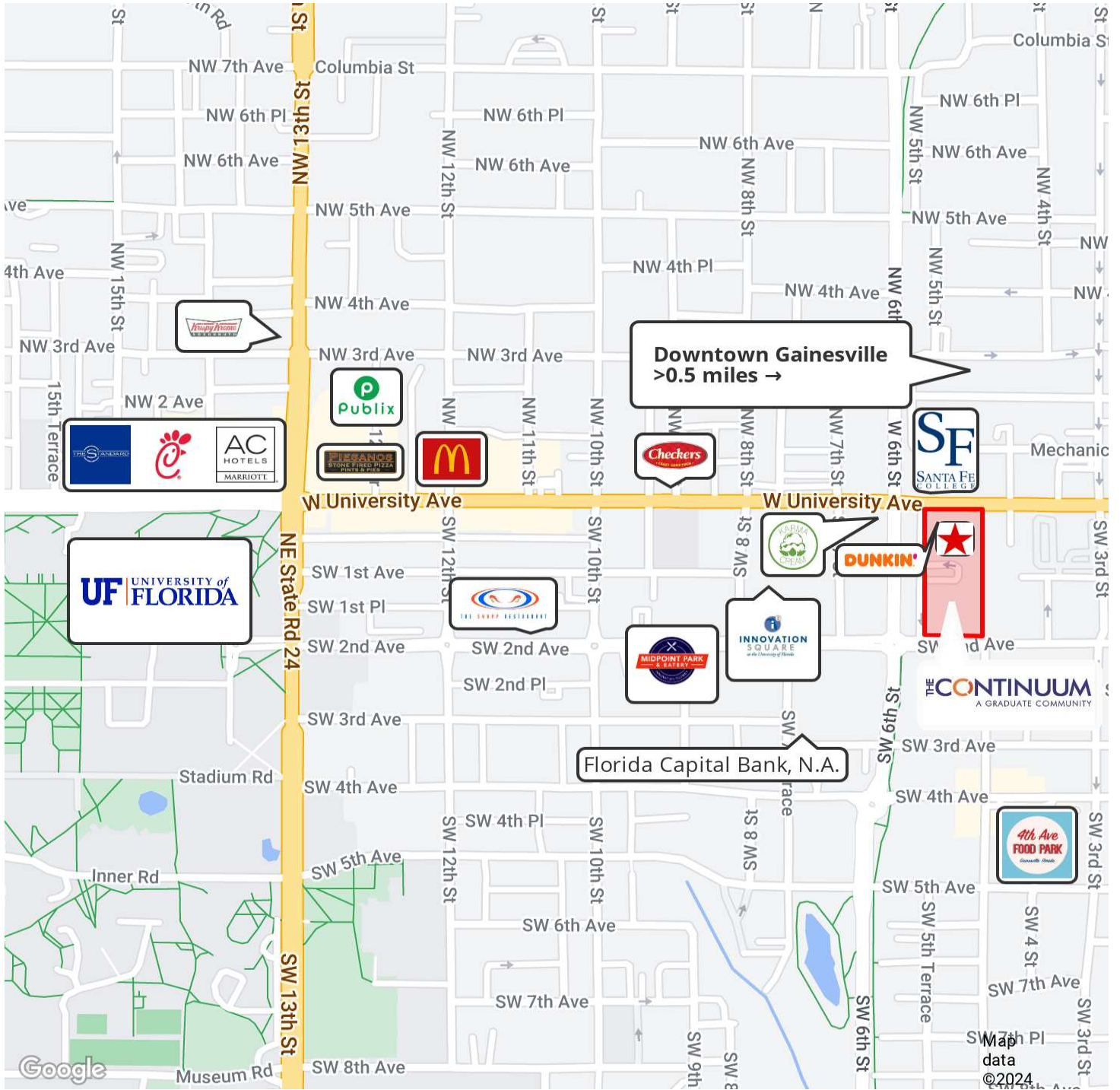


**COLDWELL BANKER  
COMMERCIAL**  
M.M. PARRISH REALTORS

# LEASE

# THE CONTINUUM

491 W University Ave Gainesville, FL 32601



**Craig Carter**  
352.339.4038  
ccarter@mmparrish.com

**Dean R. Cheshire**  
352.745.1883  
Dean@mmparrish.com

**Michelle Carter**  
352.339.5734  
mcarter@mmparrish.com



**COLDWELL BANKER  
COMMERCIAL**  
M.M. PARRISH REALTORS



352.745.1883

dean@mmparrish.com

352.339.5734

mcarter@mmparrish.com

352.339.4038

ccarter@mmparrish.com

Craig Carter, Dean Cheshire, and Michelle Carter make up the CRE Pro Team. Their complementary skillsets make them formidable allies who will go the extra mile to bring closure for their clients. All three have been business owners in Alachua County for many years, which gives them insight into local laws and code requirements, relationships with folks within the industry, and a deep understanding of the needs of businesses and investors.

- **Highly Specialized:** 100% of their focus is commercial real estate.
- **Consistent Producers:** Awarded “Top Two” status for being in the top 2% of Coldwell Banker Commercial Realtors nationwide in 2023, with multi-million-dollar production year after year.
- **Global Resources:** The Team has the backing and longevity (since 1906) of Coldwell Banker Commercial agents and database assets around the U.S. and the world. Their brokerage, M.M. Parrish Realtors, who have been in our community since 1911, gives the CRE Pro Team local knowledge and global influence to make them a force in the commercial real estate market.
- **In-the-Know:** As members of the largest MLS in the state of Florida, the Team deploys listings on all the major commercial sites, including Loopnet/Costar, Crexi, CBC Worldwide, and more. Their strength in networking and regional relationships can bring off-market deals to their clients.
- **Anticipating Needs and Fixing Problems:** The Team identifies potential roadblocks before they become your problem and harnesses their resources to bring your deal to completion.

**Call to see what the CRE Pro Team can do for you!**

