



**776 EL CAMINO REAL | REDWOOD CITY**  
±3,258 GROUND FLOOR RETAIL

TRADER JOE'S  
Walgreens

Chevron

KOHL'S SEPHORA  
Sports Basement Erik's DeliCafé  
JOANN Starbucks ME L&L  
planet fitness GAME KASTLE

Applebee's  
GRILL • BAR

Party City BAYFRONT Fitness  
"HOOT" JUDKINS  
The Wise Choice for Real Wood Furniture

NAPA AUTO PARTS

85

Chavez Supermarket



Downtown Redwood City

CINEMARK

GROCERYOUTLET  
"bargain market"

Smart&Final

776 El Camino Real

El 35,000 VPD

Sequoia Station

savers  
SHOP. REUSE. REIMAGINE.

AMERICA'S TIRE

CVS

Sequoia High School

North Star Academy

WHOLE FOODS MARKET

ELCO YARDS

savers

OUTDOOR SUPPLY HARDWARE

Hoover Elementary

COSTCO WHOLESALE

BevMo!






85

Marshalls  
TARGET

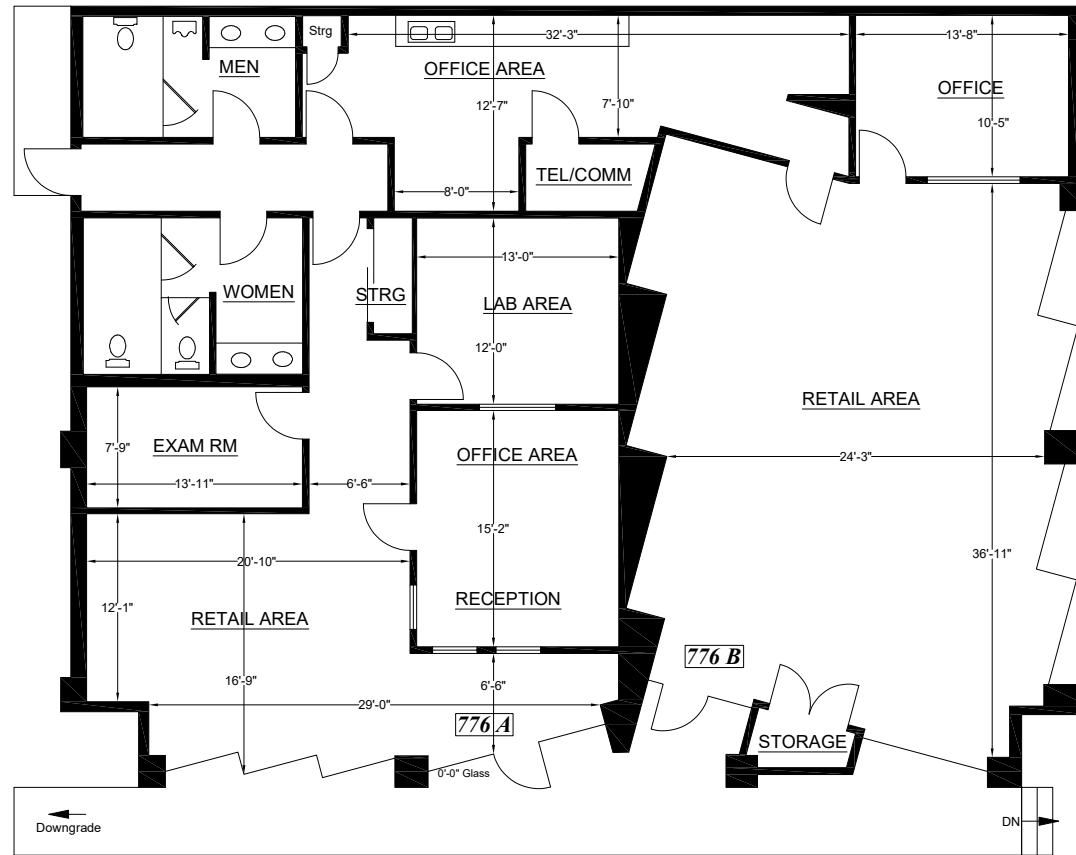
# 776 EL CAMINO REAL SITE PLAN & DEMOS



- APPROXIMATELY ±3,258 SF GROUND FLOOR RETAIL ON ±11,600 SF LOT
- LOCATED ON THE HARD CORNER OF EL CAMINO REAL AND BROADWAY
- MONUMENT SIGNAGE AVAILABLE
- DEDICATED PARKING
- ZONED “P DISTRICT” (PLANNED COMMUNITY DISTRICT) & “DOWNTOWN GENERAL” UNDER THE DOWNTOWN PRECISE PLAN

	1 MILE	3 MILE	5 MILE
 TOTAL POPULATION	32,205	133,616	263,849
 DAYTIME POPULATION	42,755	152,501	307,870
 AVG HH INCOME	\$197,152	\$222,669	\$234,398
 MEDIAN AGE	36	39	40
 BACHELOR OR HIGHER	55%	57%	65%

# 776 EL CAMINO REAL FLOOR PLAN



EL CAMINO REAL

BROADWAY



**GOLDMAN**  
COMMERCIAL LIMITED REAL ESTATE

**MATT SWEENEY**

408.863.1444

[msweeney@theeconiccompany.com](mailto:msweeney@theeconiccompany.com)

DRE #01746896

**SEAN O'CARROLL**

408.863.1447

[socarroll@theeconiccompany.com](mailto:socarroll@theeconiccompany.com)

DRE #01058587

**NADINE WHISNANT**

510.214.6412

[nwhisnant@goldmanltd.com](mailto:nwhisnant@goldmanltd.com)

DRE #00966437

**TAMMY CHOY**

510.214.6408

[tchoy@goldmanltd.com](mailto:tchoy@goldmanltd.com)

DRE #02023115