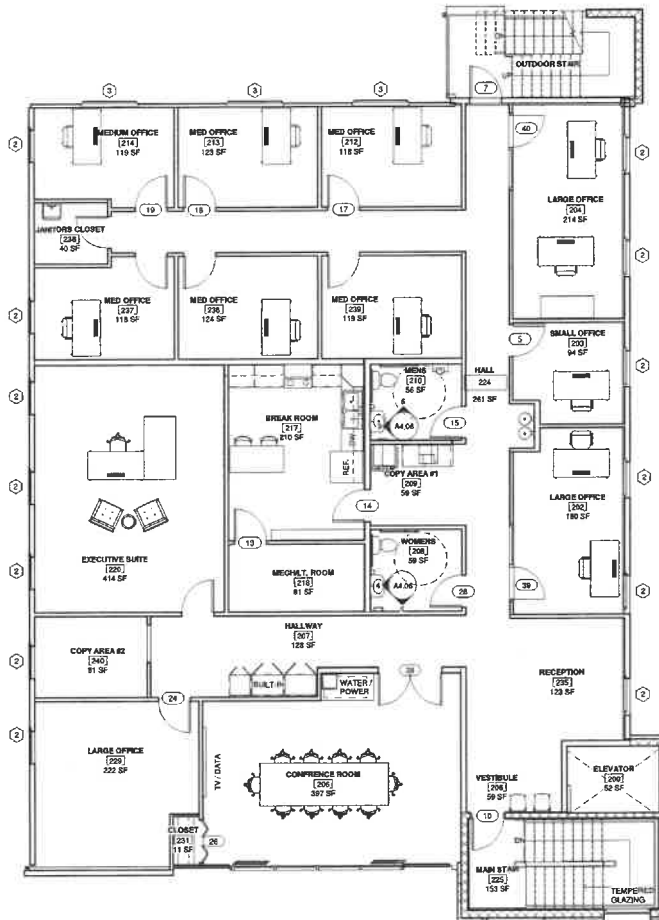


8/15/2022 3:37:30 PM

① SECOND FLOOR PLAN  
3/16" = 1'-0"



**GENERAL NOTES**

- 1 ELECTRICAL INFORMATION IS DIAGRAMMATIC ONLY. OUTLETS MUST BE PLACED 10'-0" MAX. EVERY WALL 2' OR LONGER MUST HAVE AT LEAST ONE OUTLET. EXISTING ELECTRICAL SHALL REMAIN IN PLACE UNLESS IT IS IN A DEMOLITION AREA OR UNLESS NOTED OTHERWISE.
- 2 ELECTRICAL SYSTEM THIS PROJECT CONTAINS AREAS WHEN ELECTRICAL ITEMS ARE NOT CONCEALED IN CONSTRUCTION ASSEMBLIES. MAKE PROVISION TO ADEQUATELY PROTECT ELECTRICAL ITEMS. SURFACE MOUNTED ROUND CONDUIT AND BOXES ARE ACCEPTABLE.
- 3 PLUMBING SYSTEMS SPECIFIC BUT LIMITED SPACE IS ALLOTTED FOR SANITARY PIPING. COORDINATION WITH ARCH. AND MECH CONTRACTOR WILL BE NECESSARY.
- 4 STRUCTURAL INFORMATION IS DIAGRAMMATIC ONLY. REF TO STRUCTURAL DRAWINGS FOR SPECIFIC INFORMATION.
- 5 PLUMBING AND MECHANICAL INFORMATION IS DIAGRAMMATIC ONLY AND MEANT TO CONVEY GENERAL INTENTION FOR LAYOUT. CONTRACTOR WILL PROVIDE SPECIFIC LAYOUT FOR APPROVAL BY ARCHITECT PRIOR TO CONSTRUCTION.
- 6 SEE PAGE A0.40 FOR SIGN/ FIXTURE MOUNTING LOCATIONS.
- 7 ALL INTERIOR FINISHES AT INTERIOR EXIT STAIRWAYS, INTERIOR EXIT RAMPS AND EXIT PASSAGEWAYS, CORRIDORS AND ENCLOSURE FOR EXIT ACCESS STAIRWAYS AND EXIT ACCESS RAMPS TO BE FINISHED WITH CLASS "B" MATERIALS.
- 8 PARKING SPACE IDENTIFICATION SIGN SHALL INCLUDE THE INTERNATIONAL SYMBOL OF ACCESSIBILITY COMPLYING WITH 703.7.2.1.
- 9 EACH SUCH PARKING SPACE MUST BE STRIPED IN A MANNER THAT IS CONSISTENT WITH THE STANDARDS OF THE CONTROLLING JURISDICTION FOR OTHER SPACES AND PROMINENTLY OUTLINED WITH BLUE PAINT, AND MUST BE REPAINTED WHEN NECESSARY, TO BE CLEARLY DISTINGUISHABLE AS A PARKING SPACE DESIGNATED FOR PERSONS WHO HAVE DISABILITIES. THE SPACE MUST BE POSTED WITH A PERMANENT ABOVE-GRADE SIGN OF A COLOR AND DESIGN APPROVED BY THE DEPARTMENT OF TRANSPORTATION, WHICH IS PLACED ON OR AT LEAST 60 INCHES (1525 MM) ABOVE THE FINISHED FLOOR OR GROUND SURFACE MEASURED TO THE BOTTOM OF THE SIGN AND WHICH BEARS THE INTERNATIONAL SYMBOL OF ACCESSIBILITY AND THE CAPTION "PARKING BY DISABLED PERMIT ONLY." SUCH A SIGN, ERECTED AFTER OCTOBER 1, 1996, MUST INDICATE THE PENALTY FOR ILLEGAL USE OF THE SPACE.
- 10 CUSTOM ELEVATOR TO BE CONSTRUCTED IN COMPLIANCE WITH FBC 3001

NOTE: ALL INTERIOR FINISHES AT INTERIOR EXIT STAIRWAYS, INTERIOR EXIT RAMPS AND EXIT PASSAGEWAYS, CORRIDORS AND ENCLOSURE FOR EXIT ACCESS STAIRWAYS AND EXIT ACCESS RAMPS TO BE FINISHED WITH CLASS B MATERIALS.

**FIRST FINANCIAL  
COMPANIES  
DONALD EBBERT  
1907 WEST CASS STREET  
FOR PERMIT**

REV # DATE

8/16/2018  
FOR PERMIT

MAIN FLOOR  
PLAN

**A1.02**

Project Number 2017.109  
Scale 3/16" = 1'-0"