

# On-Highway Vacant Land

Commercially Zoned | Level & Cleared

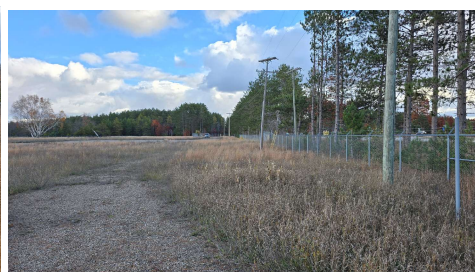
\$799,900 | 13.11 acres | Fenced & Gated



## PROPERTY FEATURES:

1980 & 2022 US-131 SW, S. Boardman

- Highway Frontage along US-131 SW
- Fully-Fenced Perimeter
- Entry Gate at Road
- Level & Cleared
- Electric & Natural Gas Run to Site
- Zoned Industrial
- Available as:
  - 13.11 acres for \$799,900
  - 9.88 acres for \$595,000
  - 3.23 acres for \$249,000



• SELLERS • BUYERS • LANDLORDS • TENANTS •



MARTY  
STEVENSON  
Commercial REALTOR®

Cell: 231.342.8072  
Office: 231.946.4404  
marty@tcexit.com

