

2462 SE Federal Hwy,
Stuart, FL 34994

REGENCY SQUARE
SHOPPING CENTER



ALBERT BROWN
Sales Associate
T: 772.631.7989
E: albert@albertbrownre.com

2,316 SF

Stuart, FL

309 SE Osceola Street #104 • Stuart, FL 34994 • 772.223.3646 • florida-commercial.net

©Florida Commercial 2021 • This offering is subject to errors, prior to sale/lease, withdrawal, or change in price, terms or conditions without notice.

EXECUTIVE SUMMARY

2462 SE Federal Hwy, Stuart, FL 34994 | REGENCY SQUARE SHOPPING CENTER

SPECS

Building Size: 2,316 SF
Zoning: B-2 City of Stuart
Price: \$16 SF NNN / YR / 3-5 YR Term

PROPERTY OVERVIEW

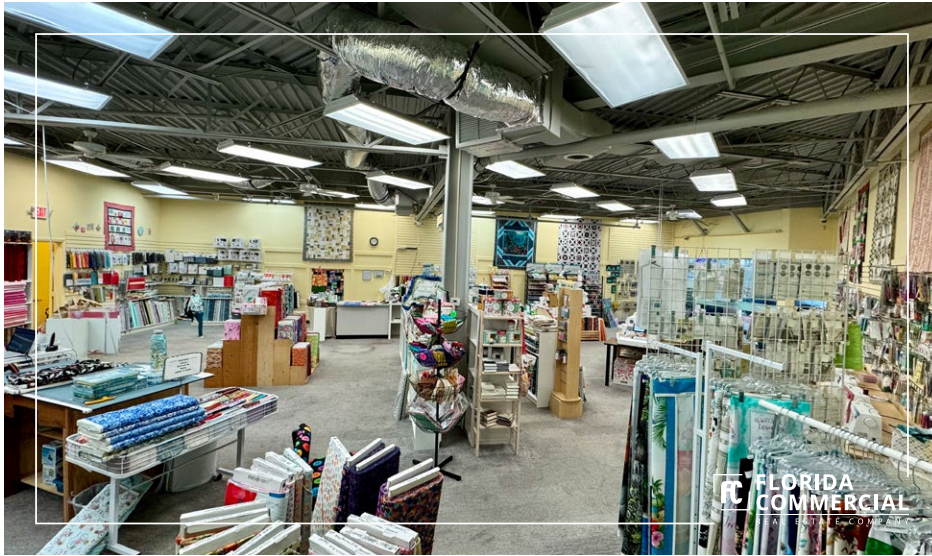
The available unit boasts a spacious open retail area, complemented by a back storage room and a private office. Positioned adjacent to the bustling movie theater, the unit benefits from excellent visibility with prominent signage both above the unit and on the monument sign. This prominent center is anchored by notable tenants such as Crunch Fitness, and West Marine, and offers a diverse range of restaurants, boutique retail shops, medical offices, and professional spaces, ensuring high foot traffic. Strategically situated at the southwest quadrant of the lighted intersection of Federal Highway and Monterey Road, this location is a prime opportunity for businesses looking to thrive in the heart of Stuart.



ALBERT BROWN
Sales Associate
T: 772.631.7989
E: albert@albertbrownre.com

2,316 SF

Stuart, FL



FC **FLORIDA**
COMMERCIAL
REAL ESTATE COMPANY



ALBERT BROWN
Sales Associate
T: 772.631.7989
E: albert@albertbrownre.com

2,316 SF

Stuart, FL

309 SE Osceola Street #104 • Stuart, FL 34994 • 772.223.3646 • florida-commercial.net

©Florida Commercial 2021 • This offering is subject to errors, prior to sale/lease, withdrawal, or change in price, terms or conditions without notice.



FLORIDA COMMERCIAL
REAL ESTATE COMPANY



FLORIDA COMMERCIAL
REAL ESTATE COMPANY



FLORIDA COMMERCIAL
REAL ESTATE COMPANY



FLORIDA COMMERCIAL
REAL ESTATE COMPANY

FLORIDA COMMERCIAL
REAL ESTATE COMPANY



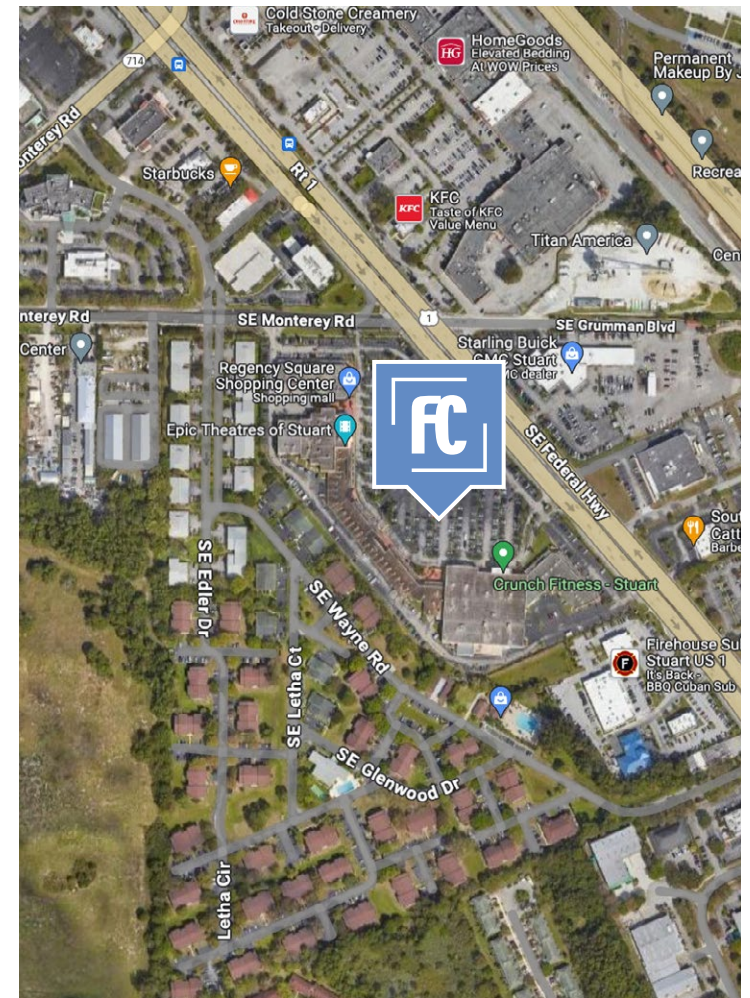
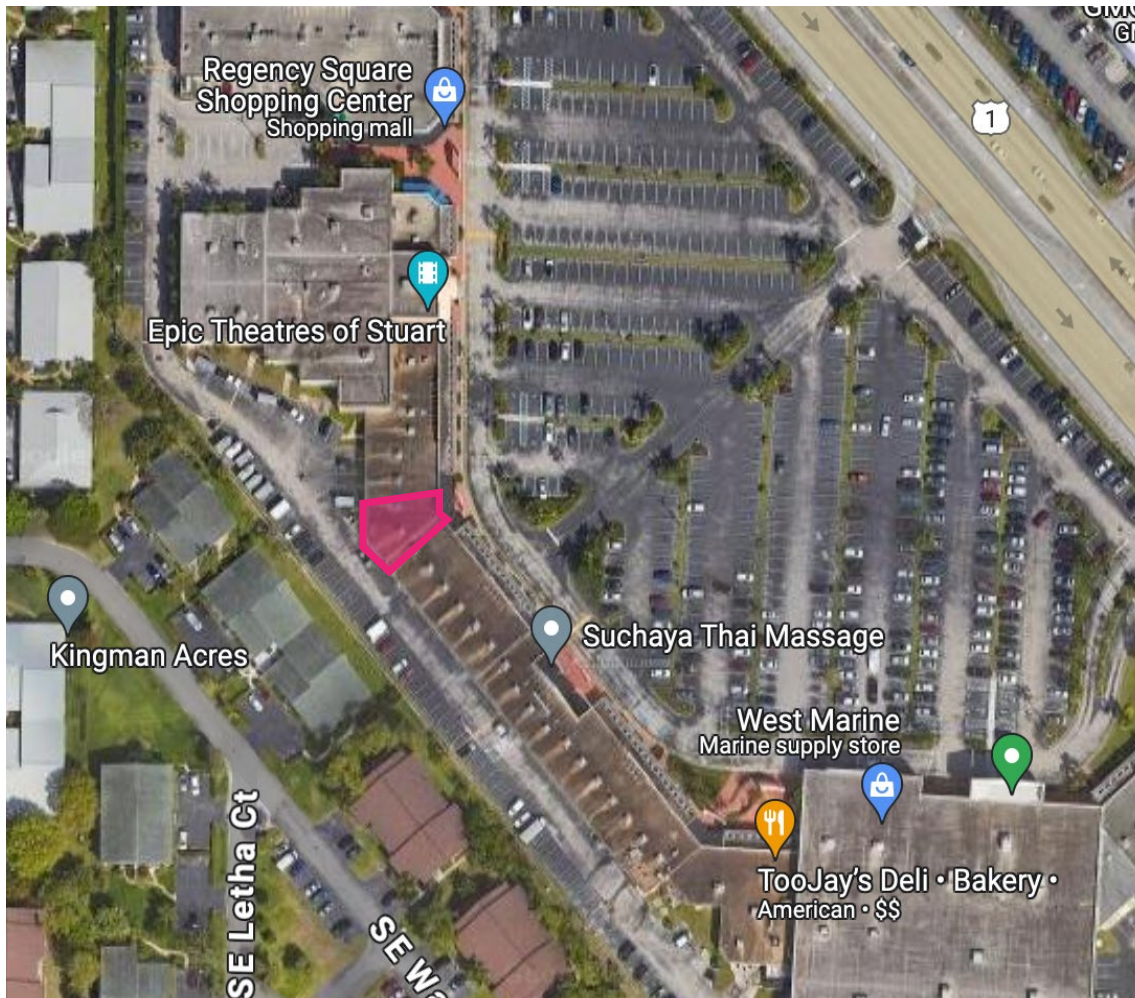
ALBERT BROWN
Sales Associate
T: 772.631.7989
E: albert@albertbrownre.com

2,316 SF

Stuart, FL

MAPS

2462 SE Federal Hwy, Stuart, FL 34994 | REGENCY SQUARE SHOPPING CENTER



ALBERT BROWN
Sales Associate
T: 772.631.7989
E: albert@albertbrownre.com


2,316 SF

Stuart, FL

RETAIL MAP & REPORT

2462 SE Federal Hwy, Stuart, FL 34994 | REGENCY SQUARE SHOPPING CENTER

 POPULATION	1 MILE	3 MILES	5 MILES
Population	5,658	45,437	95,751
Median age	41.4	47.7	48.05

 HOUSEHOLDS & INCOME	1 MILE	3 MILES	5 MILES
Total households	2,434	19,939	40,465
# of Persons per HH	2.3	2.3	2.4
Average HH income	\$50,221	\$71,879	\$79,891



ALBERT BROWN
Sales Associate
T: 772.631.7989
E: albert@albertbrownre.com

2,316 SF

Stuart, FL