

FOR LEASE

# THE BRECK BUILDING

6909 ROYALTON ROAD

Brecksville, OH, 44141



## PROPERTY DETAILS

Renovated and updated three and 1/2 story brick colonial office building. Strategically located in the heart of Brecksville, providing ample free surface parking in two easily accessible lots.

- + Second Floor – 1,200 –2,395 RSF (Office Suite)
- + Third Floor – 2,395 RSF (Former Medical Suite)
- + \$18.00 per SF, plus utilities
- + All suites offer plenty of exterior light and modern finishes
- + One block from the intersection of Route 21 and Route 82 in the heart of Brecksville at Public Square
- + Less than 1 mile from I-77 to Cleveland/Akron
- + Updated lighting and finishes in common area
- + Monument signage available
- + Economic incentives available for businesses new to Brecksville



## CONTACT US

### Susan Lines

Vice President  
+1 330 670 4411  
susan.lines@cbre.com

[Professional Bio](#)

### Zada Brenner

Senior Associate  
+1 330 670 4418  
zada.brenner@cbre.com

[Professional Bio](#)

### CBRE Inc.

3421 Ridgewood Rd, Ste 150  
Akron, Ohio 44333  
www.cbre.us

[www.cbre.us/akron-canton](http://www.cbre.us/akron-canton)

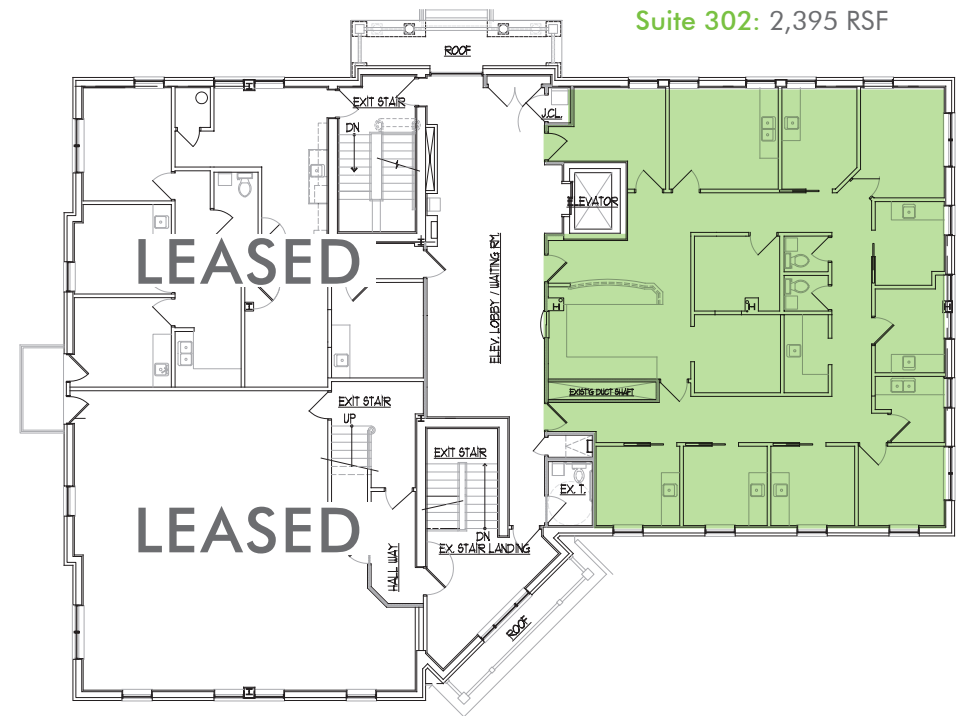
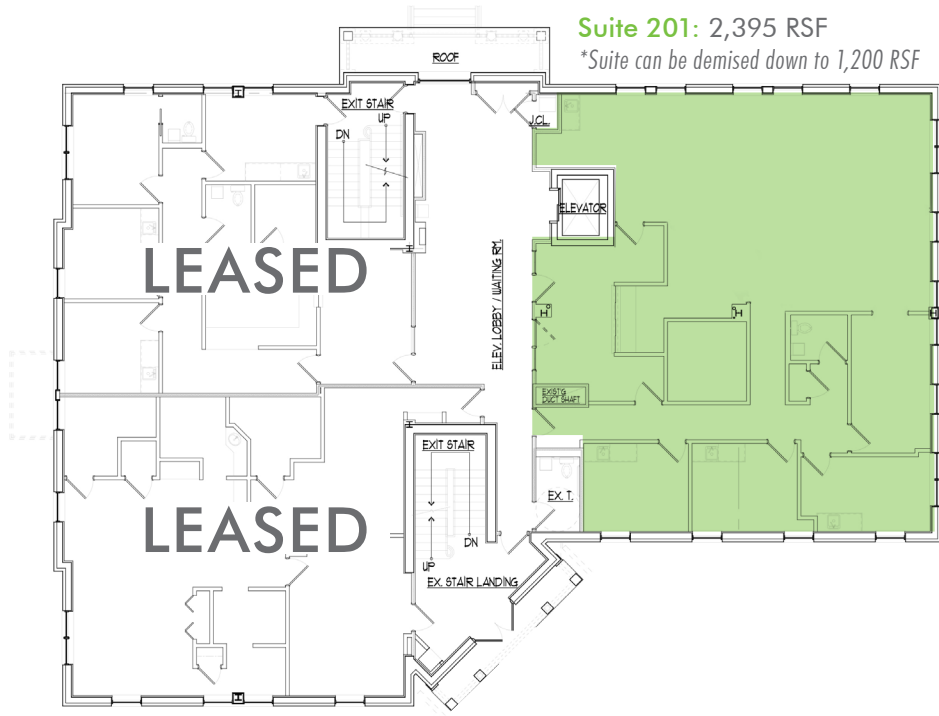
**CBRE**

# FOR LEASE THE BRECK BUILDING

6909  
ROYALTON ROAD  
Brecksville, Ohio 44141



## FLOOR PLANS



© 2019 CBRE, Inc. This information has been obtained from sources believed reliable. We have not verified it and make no guarantee, warranty or representation about it. Any projections, opinions, assumptions or estimates used are for example only and do not represent the current or future performance of the property. You and your advisors should conduct a careful, independent investigation of the property to determine to your satisfaction the suitability of the property for your needs. Photos herein are the property of their respective owners and use of these images without the express written consent of the owner is prohibited. CBRE and the CBRE logo are service marks of CBRE, Inc. and/or its affiliated or related companies in the United States and other countries. All other marks displayed on this document are the property of their respective owners. Licensed Real Estate Broker

[www.cbre.us/akron-canton](http://www.cbre.us/akron-canton)

**CBRE**