



Property Summary

Building Size	2,160 SF
Lot Size	23,958 SF
Building	Stand Alone
Year Built	1985
Roof	Membrane
Zoning	C-0
Parking	20

This stand-alone property offers an excellent opportunity for businesses seeking a well-located, highly visible office building. With ample parking and an excellent North Central location, it is ideal for a range of professional services, including medical/dental practices, contractors, daycare providers, and more. Its strategic location ensures easy access to I-25 and Highway 36, making it convenient for both employees and clients.



Ramon C. Bargas | Broker Associate
(720) 234-5134
ramon@kwcommercial.com



Martina G. Romero | Broker Associate
(303) 525-3963
martina@razrgroup.com

Disclaimer. The information contained herein, while from sources deemed reliable, is not guaranteed and is subject to change. It is your responsibility to independently confirm its accuracy and completeness. KW Commercial is agent of the Seller.

Denver, Colorado

7510 Sherman Street, Denver, CO 80221

Property Photos



Denver, Colorado

7510 Sherman Street, Denver, CO 80221

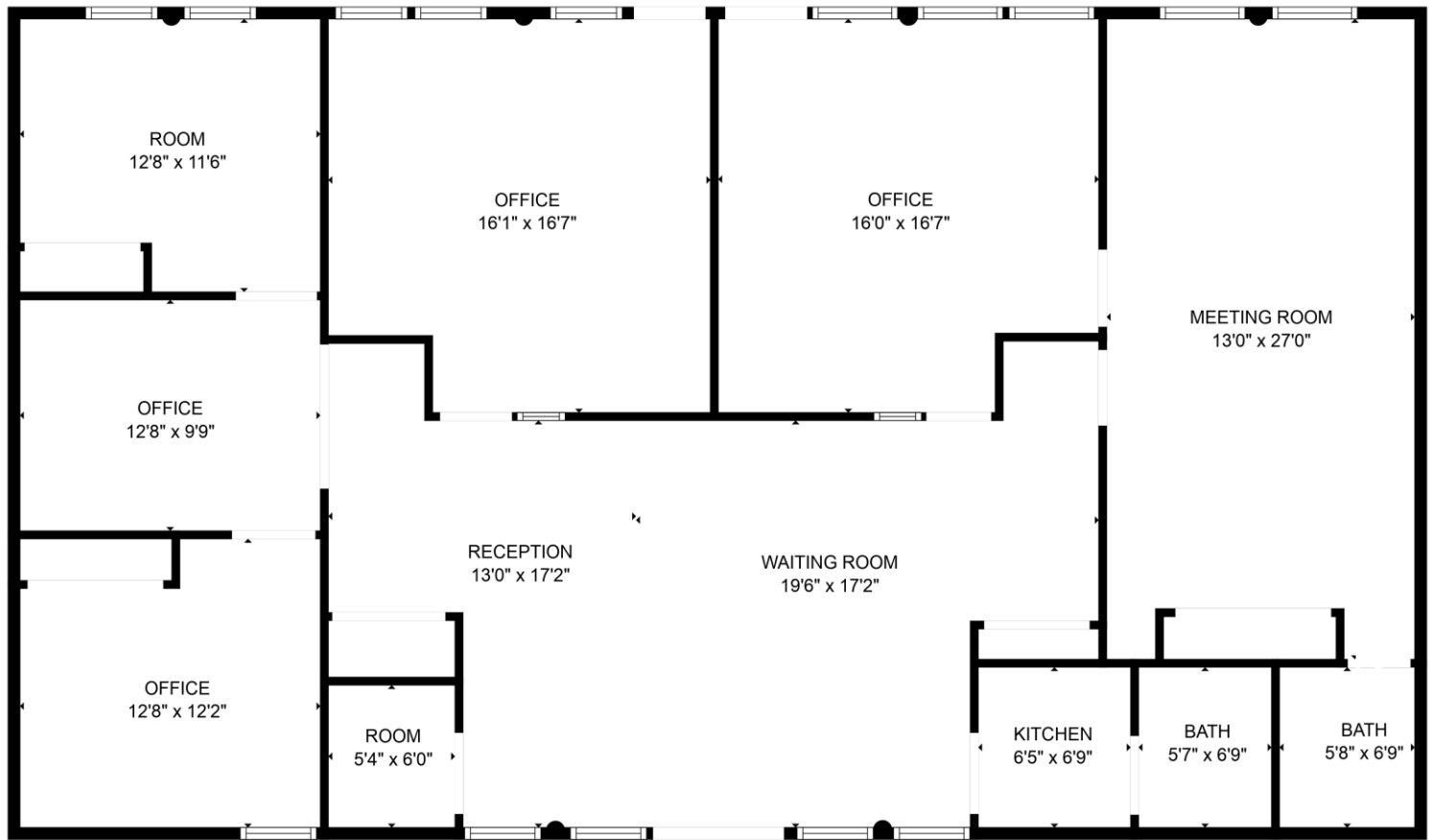
Property Photos



Denver, Colorado

7510 Sherman Street, Denver, CO 80221

Floor Plan



Denver, Colorado

7510 Sherman Street, Denver, CO 80221

Street View

