



*\*Representative Image*

## Office/Warehouse - Tract I

Legacy Range Business Park: 3201 116th Street, Lubbock, TX 79423

### Property Features

This office/warehouse space within Legacy Range Business Park offers a flexible leasing solution in a prime South Lubbock location, just off 116th Street with immediate access to Indiana Avenue and major arterial roadways. The project includes six 1,500 SF suites available for lease, which can be combined or leased separately to accommodate a variety of user needs. Each suite includes a private restroom, providing functionality for a wide range of office, warehouse, or flex users. Located within a well-planned business park in one of Lubbock's fastest-growing corridors, the property provides excellent accessibility, modern functionality, and an ideal setting for businesses looking to expand or establish a presence in the market.

### Offering Summary

SPACE AVAILABLE	1,500 - 9,000 SF
TRACT	I
LEASE RATE	\$13/SF NNN
AVAILABLE	Q3 2026

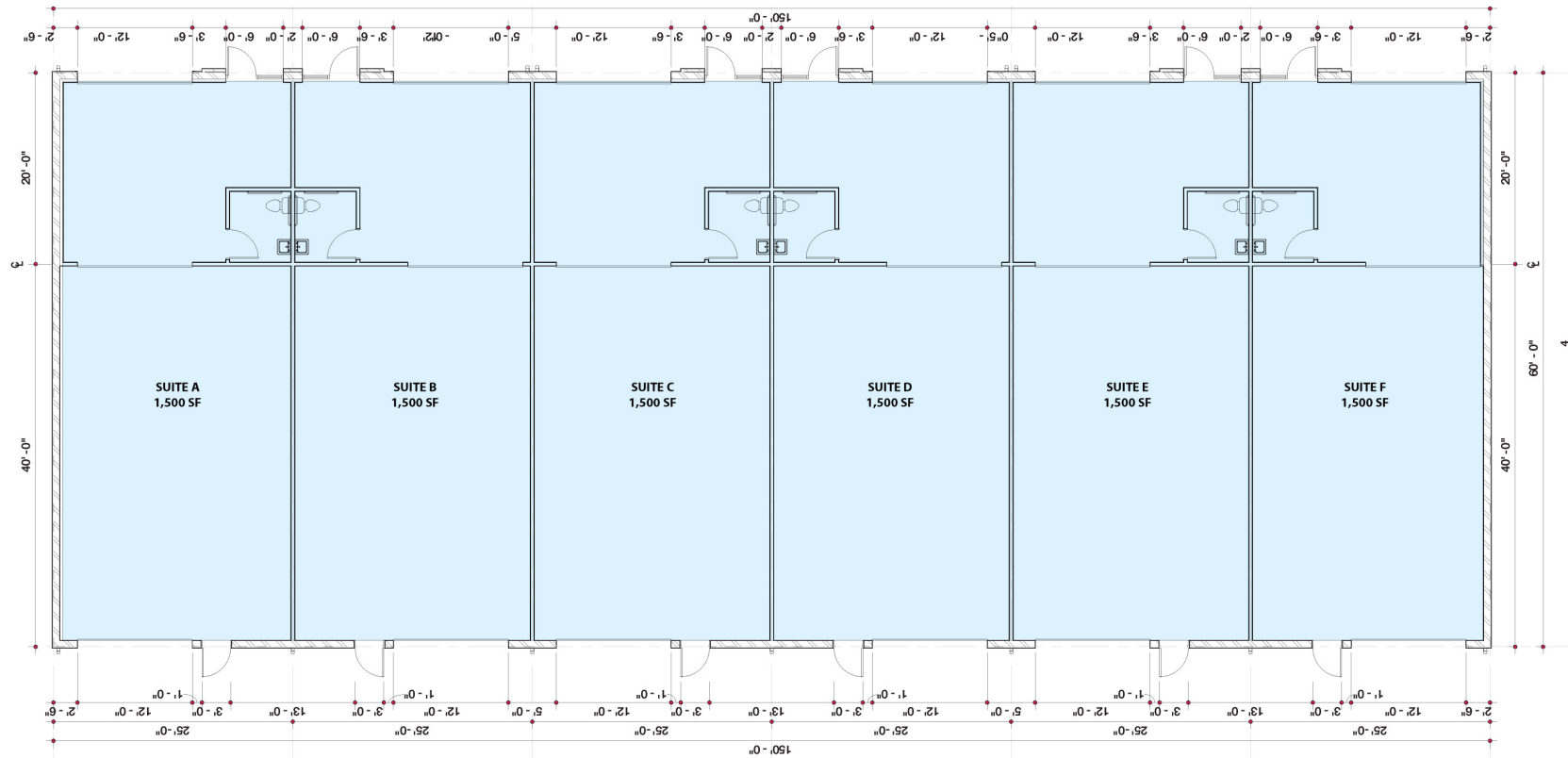
NO WARRANTY OR REPRESENTATION, EXPRESS OR IMPLIED, IS MADE AS TO THE ACCURACY OF THE INFORMATION CONTAINED HEREIN, AND THE SAME IS SUBMITTED SUBJECT TO ERRORS, OMISSIONS, CHANGE OF PRICE, RENTAL OR OTHER CONDITIONS, PRIOR SALE, LEASE OR FINANCING, OR WITHDRAWAL WITHOUT NOTICE, AND OF ANY SPECIAL LISTING CONDITIONS IMPOSED BY OUR PRINCIPALS NO WARRANTIES OR REPRESENTATIONS ARE MADE AS TO THE CONDITION OF THE PROPERTY OR ANY HAZARDS CONTAINED THEREIN ARE ANY TO BE IMPLIED.

Jax Collier  
[jax@naiwheelhouse.com](mailto:jax@naiwheelhouse.com)  
 +1 325 207 6118  
[naiwheelhouse.com](http://naiwheelhouse.com)

Joseph Magby  
[joe@naiwheelhouse.com](mailto:joe@naiwheelhouse.com)  
 +1 806 200 3244  
[naiwheelhouse.com](http://naiwheelhouse.com)

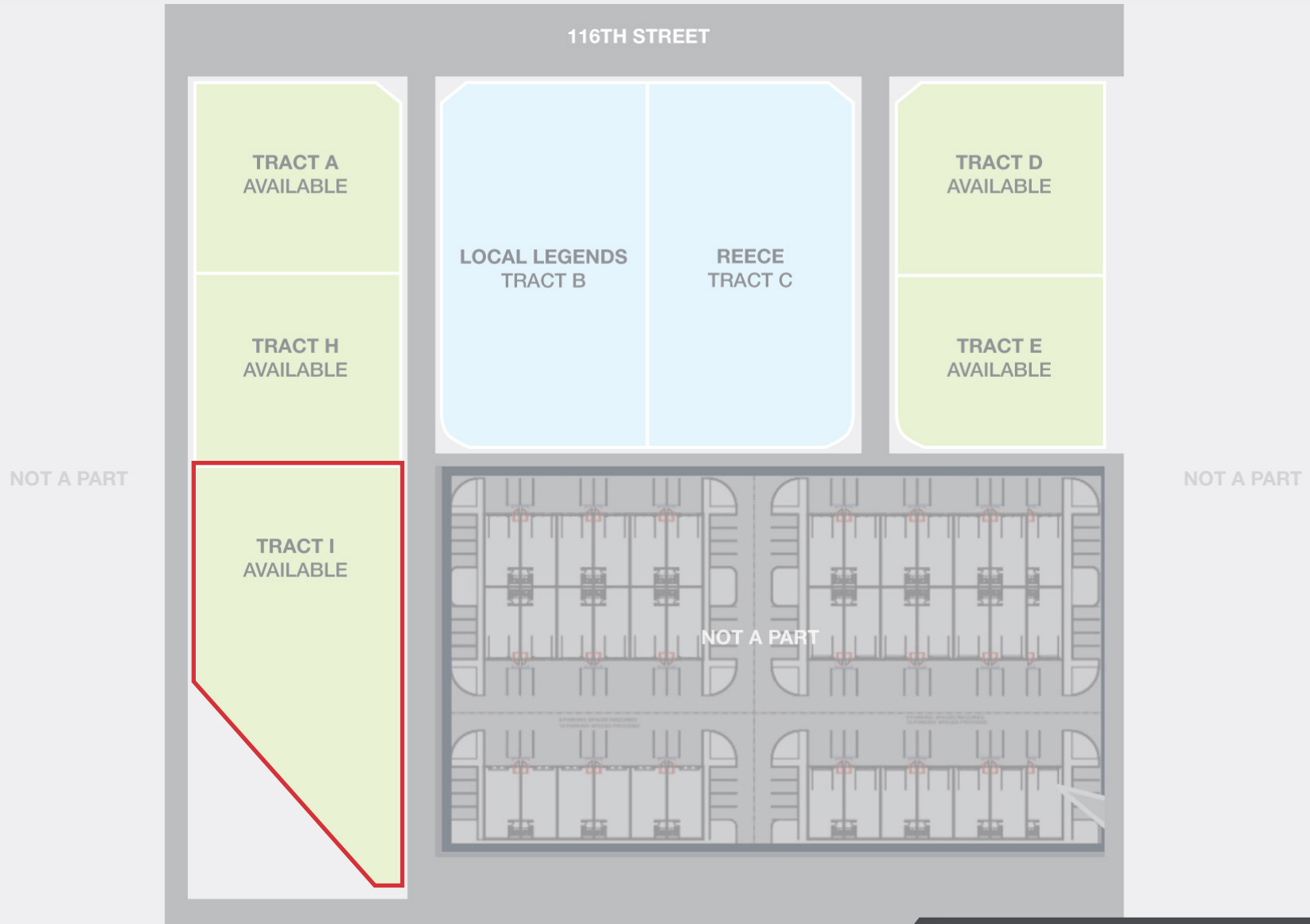
# FOR LEASE

## The Property



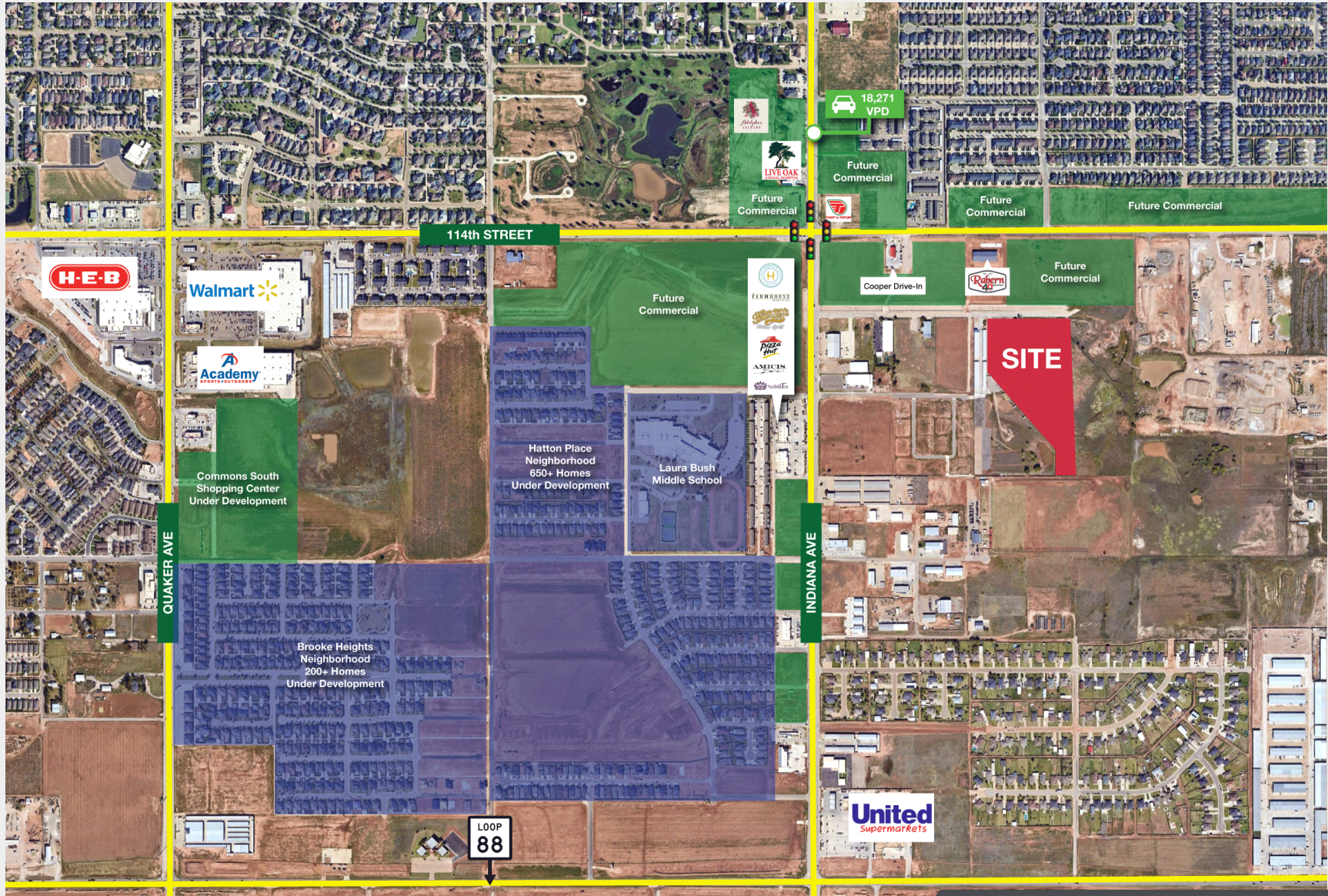
# FOR LEASE

## The Property



# FOR LEASE

## The Area



# FOR LEASE

## Representative Renderings

