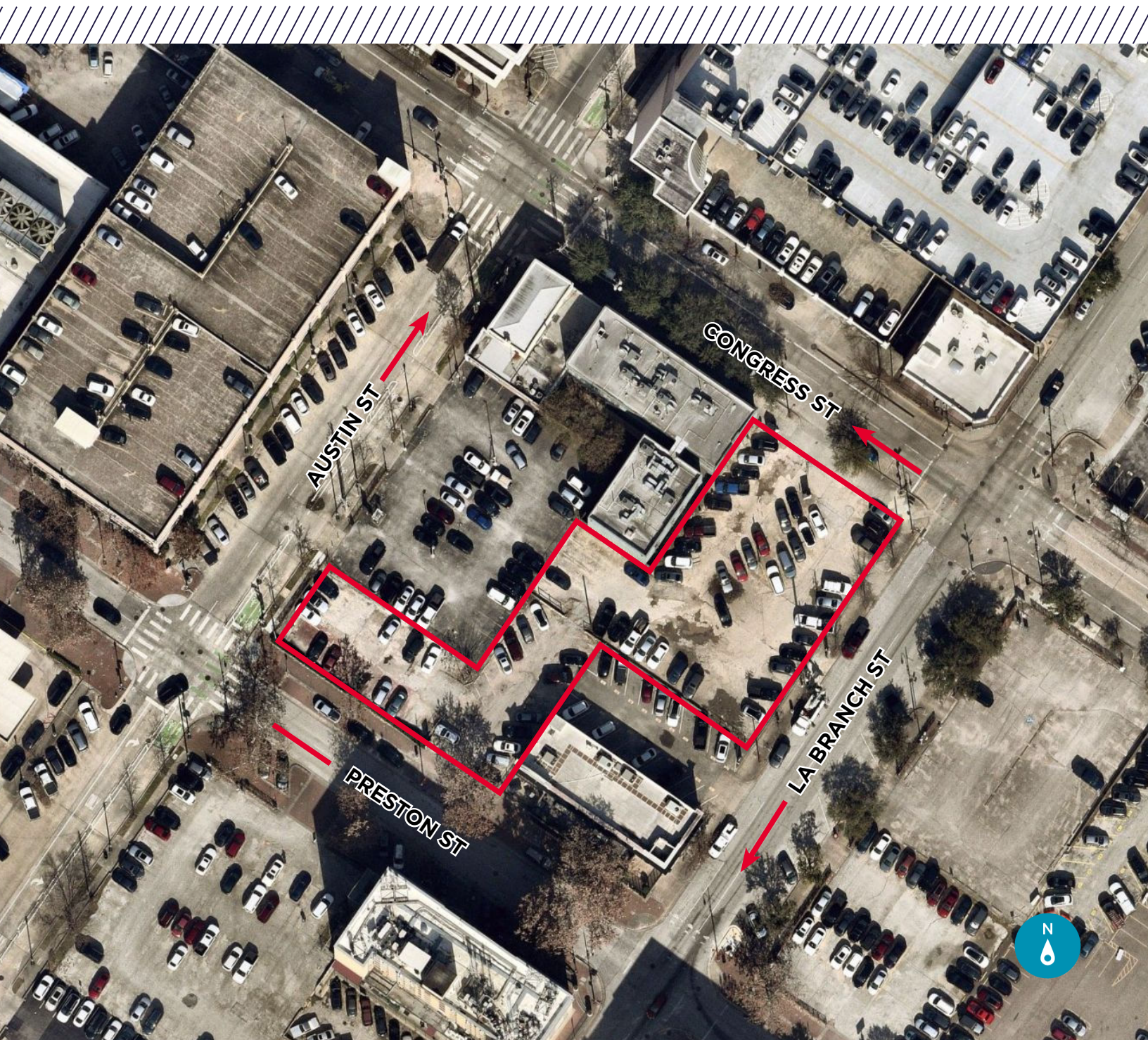


# ±27,400 SF AVAILABLE

BLOCK 28, S.S.B.B. 1409 PRESTON ST  
HOUSTON, TX 77002



**KRISTEN MCDADE**  
Managing Director  
+1 713 331 1798  
kristen.mcdade@cushwake.com

**MATTHEW DAVIS**  
Senior Director  
+1 713 331 1796  
matthew.davis@cushwake.com

**CHARLIE MCGAHREN**  
Associate  
+1 713 331 1772  
charlie.mcgahren@cushwake.com

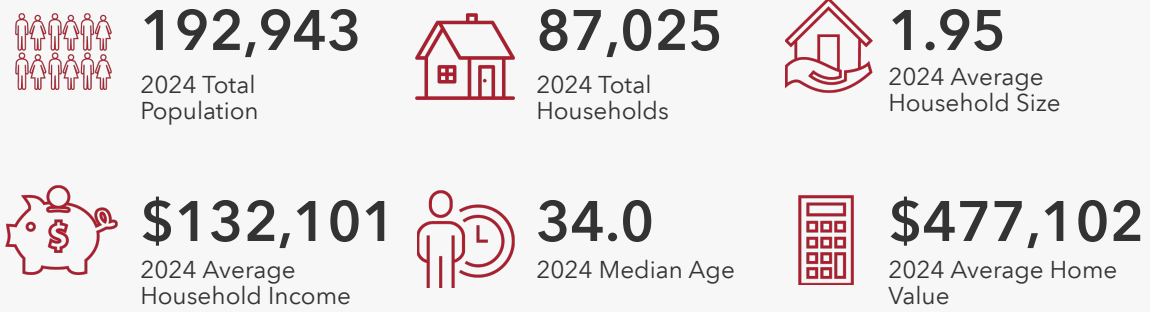


1330 Post Oak Boulevard, Suite 2700 Houston, TX  
cushmanwakefield.com

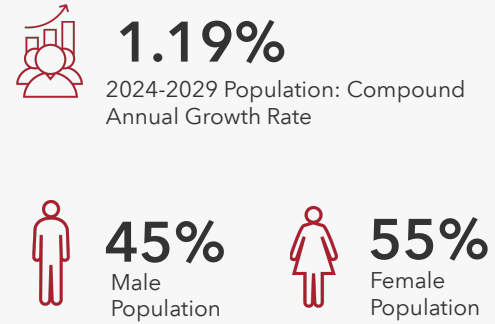
# DEMOGRAPHICS

1409 Preston, Houston, TX 77002  
3 miles

## HOUSEHOLDS



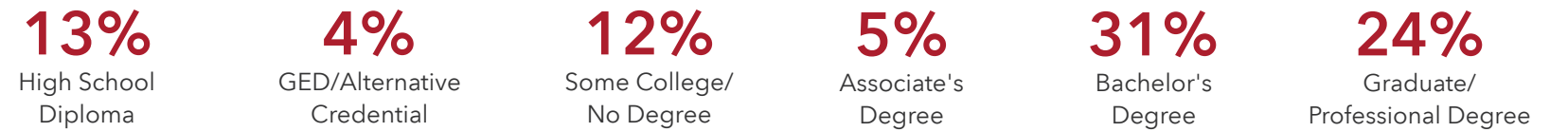
## POPULATION



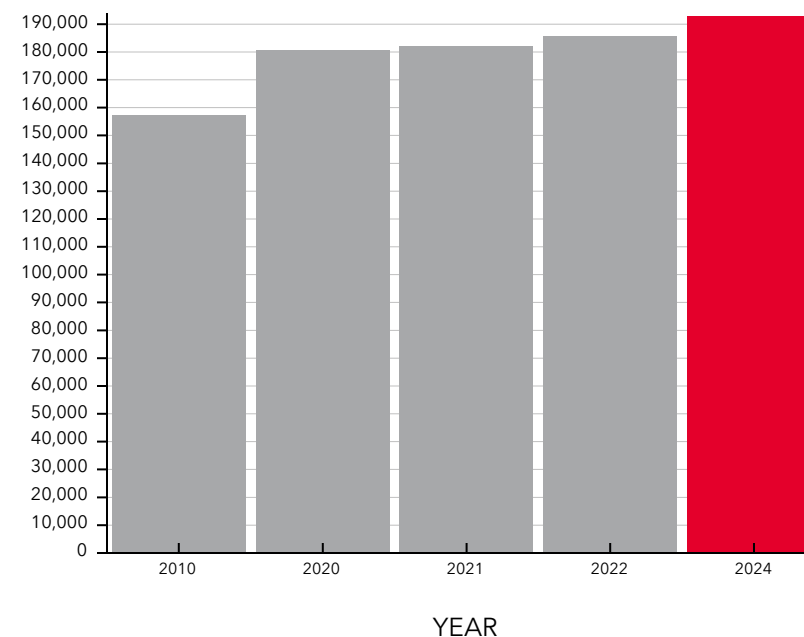
## EMPLOYMENT



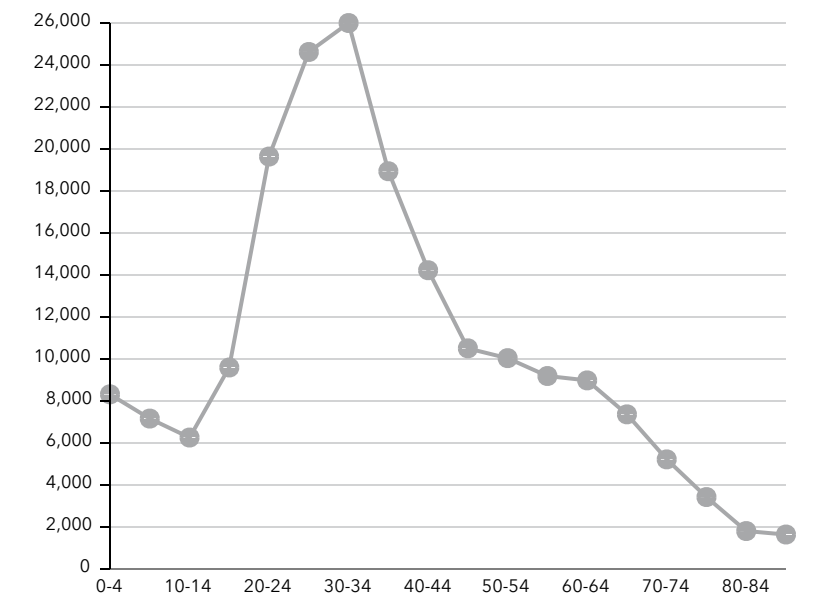
## EDUCATIONAL ATTAINMENT



## POPULATION TIME SERIES 2010-2024

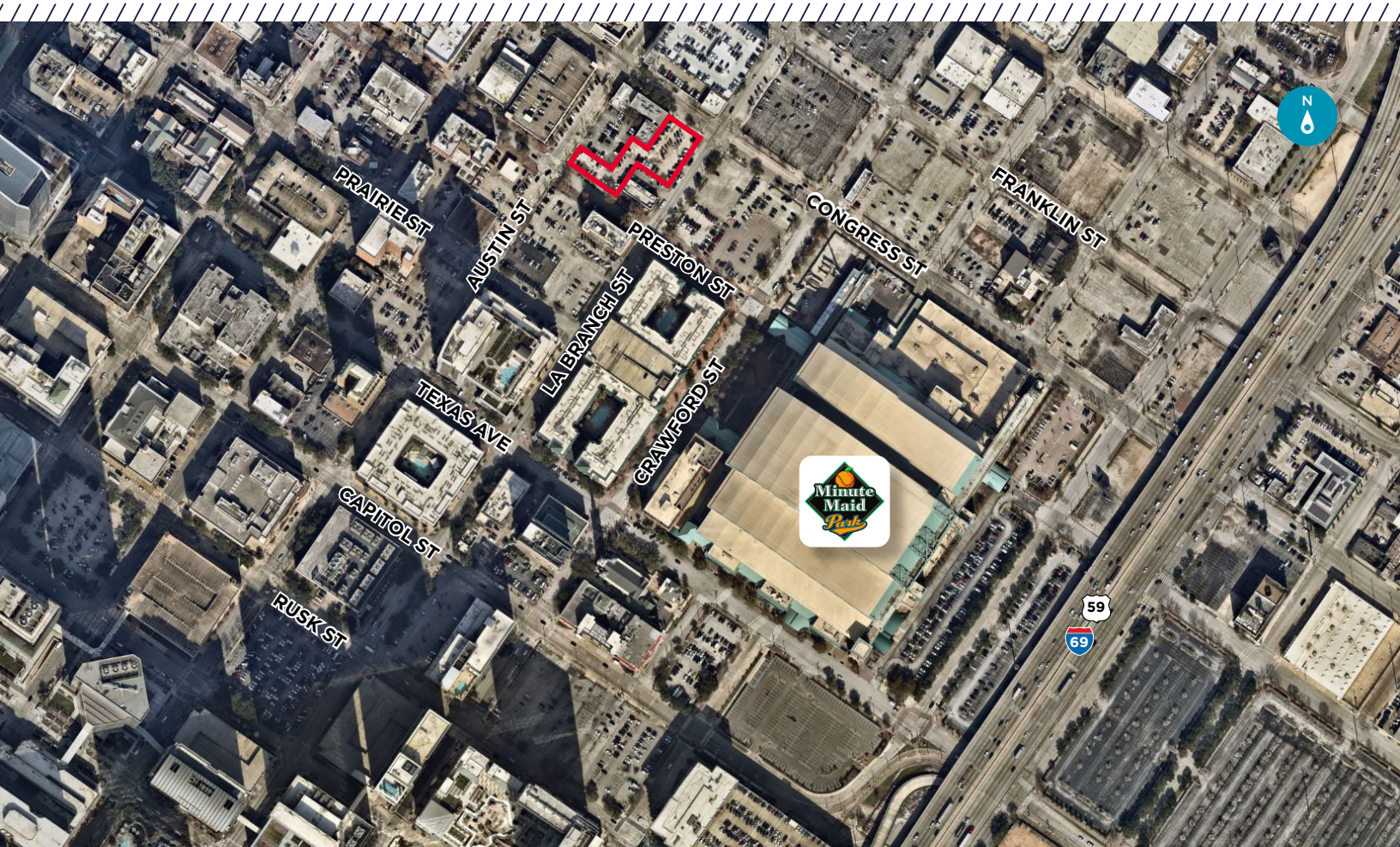


## POPULATION BY AGE GROUP



# ±27,400 SF AVAILABLE

BLOCK 28, S.S.B.B. 1409 PRESTON ST  
HOUSTON, TX 77002



## Highlights



Block 28:  
±27,400 SF



Preston  
Frontage: ±150'



Key Map:  
493M



LaBranch  
Frontage: ±150'



Congress  
Frontage: ±100'

**KRISTEN MCDADE**  
Managing Director  
+1 713 331 1798  
kristen.mcdade@cushwake.com

**MATTHEW DAVIS**  
Senior Director  
+1 713 331 1796  
matthew.davis@cushwake.com

**CHARLIE MCGAHREN**  
Associate  
+1 713 331 1772  
charlie.mcgahren@cushwake.com



1330 Post Oak Boulevard, Suite 2700 Houston, TX  
cushmanwakefield.com

©2024 Cushman & Wakefield. All rights reserved. The information contained in this communication is strictly confidential. This information has been obtained from sources believed to be reliable but has not been verified. NO WARRANTY OR REPRESENTATION, EXPRESS OR IMPLIED, IS MADE AS TO THE CONDITION OF THE PROPERTY (OR PROPERTIES) REFERENCED HEREIN OR AS TO THE ACCURACY OR COMPLETENESS OF THE INFORMATION CONTAINED HEREIN, AND SAME IS SUBMITTED SUBJECT TO ERRORS, OMISSIONS, CHANGE OF PRICE, RENTAL OR OTHER CONDITIONS, WITHDRAWAL WITHOUT NOTICE, AND TO ANY SPECIAL LISTING CONDITIONS IMPOSED BY THE PROPERTY OWNER(S). ANY PROJECTIONS, OPINIONS OR ESTIMATES ARE SUBJECT TO UNCERTAINTY AND DO NOT SIGNIFY CURRENT OR FUTURE PROPERTY PERFORMANCE.