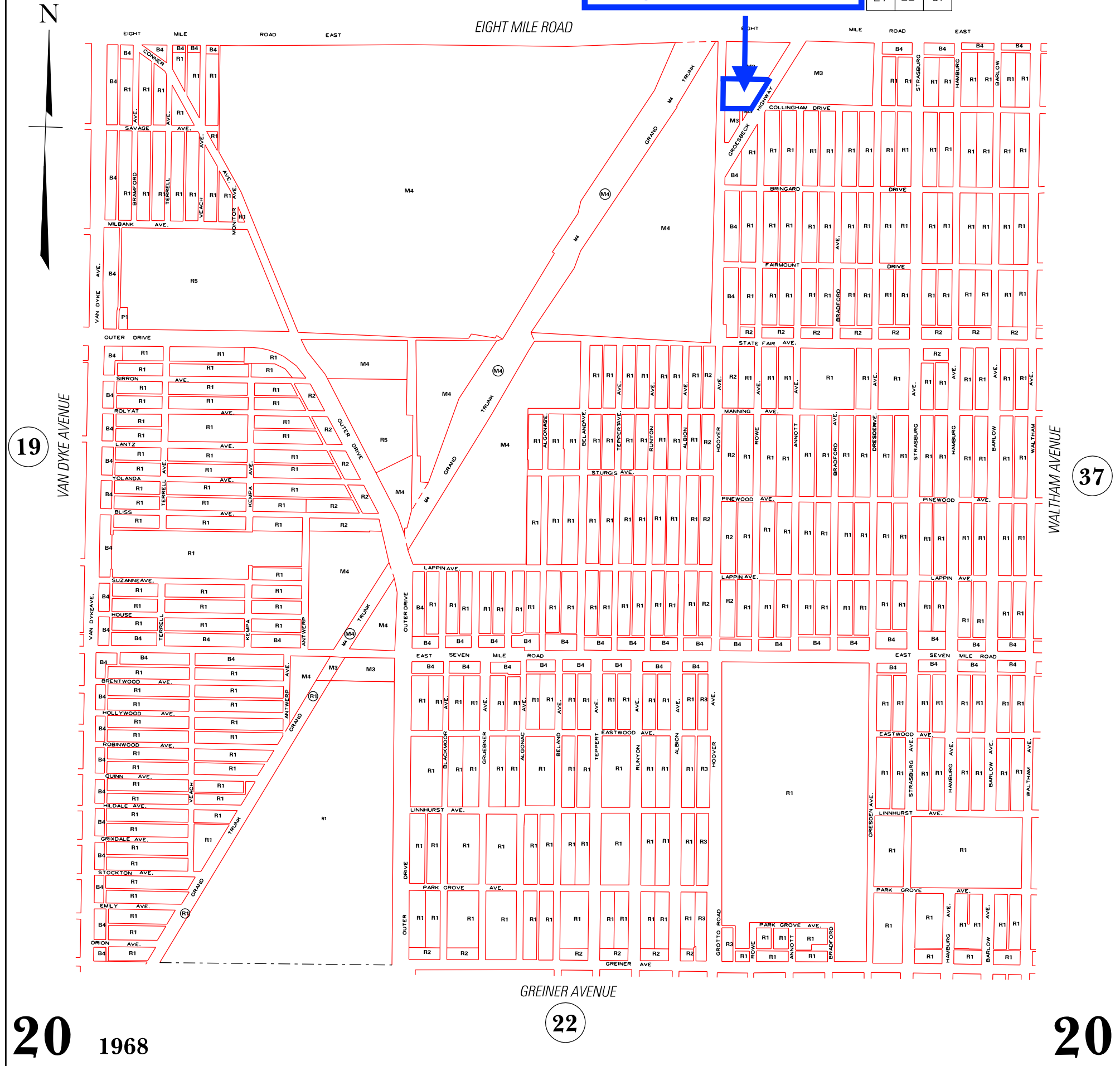


20530 Hoover St, Detroit, MI  
Zoning: M-3 General Industrial

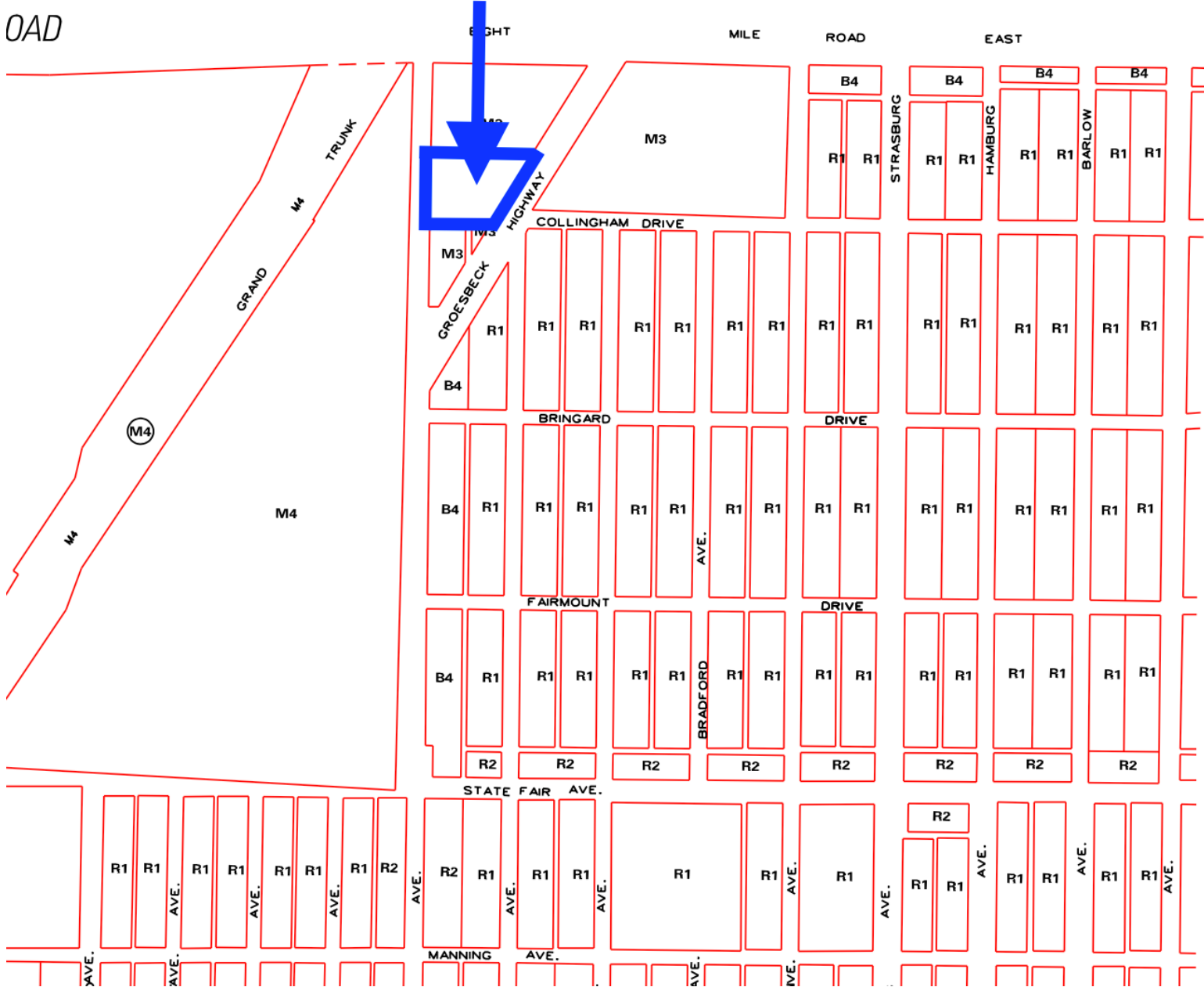
XXX	XXX	XXX
19	20	37
21	22	37



# 20530 Hoover St, Detroit, MI Zoning: M-3 General Industrial

XXX	XXX	XXX
19	<b>20</b>	37
21	22	37

OAD



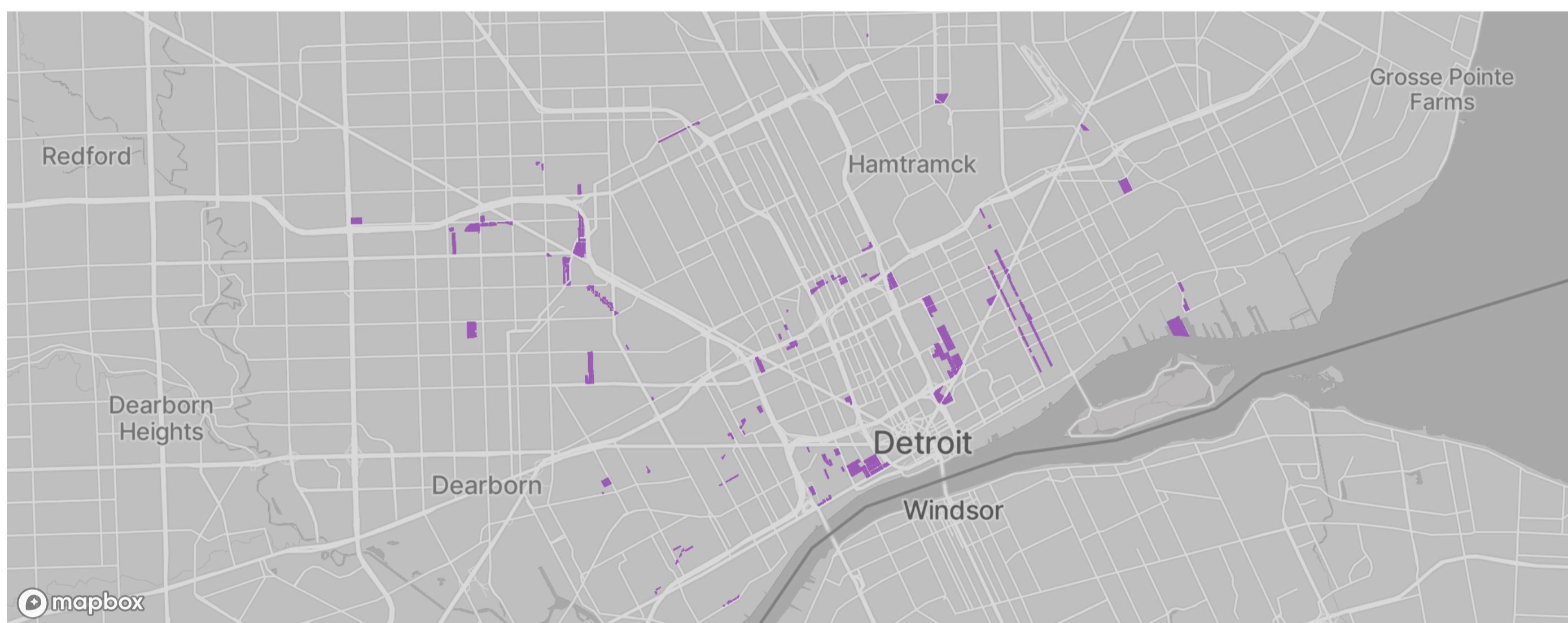
## M3

## General Industrial District

### Zone description

This district is composed of property so situated as to be suitable for industrial development, but where the modes of operation of the industry may affect any nearby residential uses. The purpose of this district is to permit the normal operation of a majority of industries, subject only to those regulations needed to control congestion and to protect nearby residential districts. No new residential construction is permitted in this district with the exception of loft conversions of existing buildings and of residential uses combined in structures with permitted commercial uses. These requirements are to protect residences from an undesirable environment and to ensure reservation of adequate areas for industrial development.

### Zone map



### By-right uses

- [Contractor yard, landscape or construction](#)
- [Motor vehicles, new, Storage lot accessory to salesroom or sales lots for new motor vehicles](#)
- [Motor vehicles, new, salesroom or sales lots](#)
- [Motor vehicles, used, salesroom or sales lots](#)
- [Bake shop, retail](#)
- [Art gallery](#)
- [Blueprinting shop](#)
- [Boiler repairing](#)
- [Construction equipment, agricultural implements, and other heavy equipment repair or service](#)
- [Laundry, industrial](#)
- [Lumber yard](#)
- [Machine shop](#)
- [Pet crematory](#)
- [Tool sharpening or grinding](#)
- [Trade services, general](#)
- [Welding shops](#)