

Office Space in Recently  
Renovated Building  
**FOR LEASE**

2700 Washington Avenue  
**DOWNTOWN NEWPORT NEWS**



## **ABOUT PROPERTY**

- Four-story office building next to Circuit Courts, City Hall and 3 blocks from Huntington Ingalls
- Suites available as small as 580 SF or up to the full building which consists of 10,000 SF
- Drive-thru available for a potential sandwich/ coffee shop
- Efficient suites for general office use
- Easy access to I-664, providing quick access to the southside and Peninsula
- On-site parking included in rental rate. Number of spots allocated to be negotiated
- LEASE RATE: \$17.50 SF/YR/FULL SERVICE

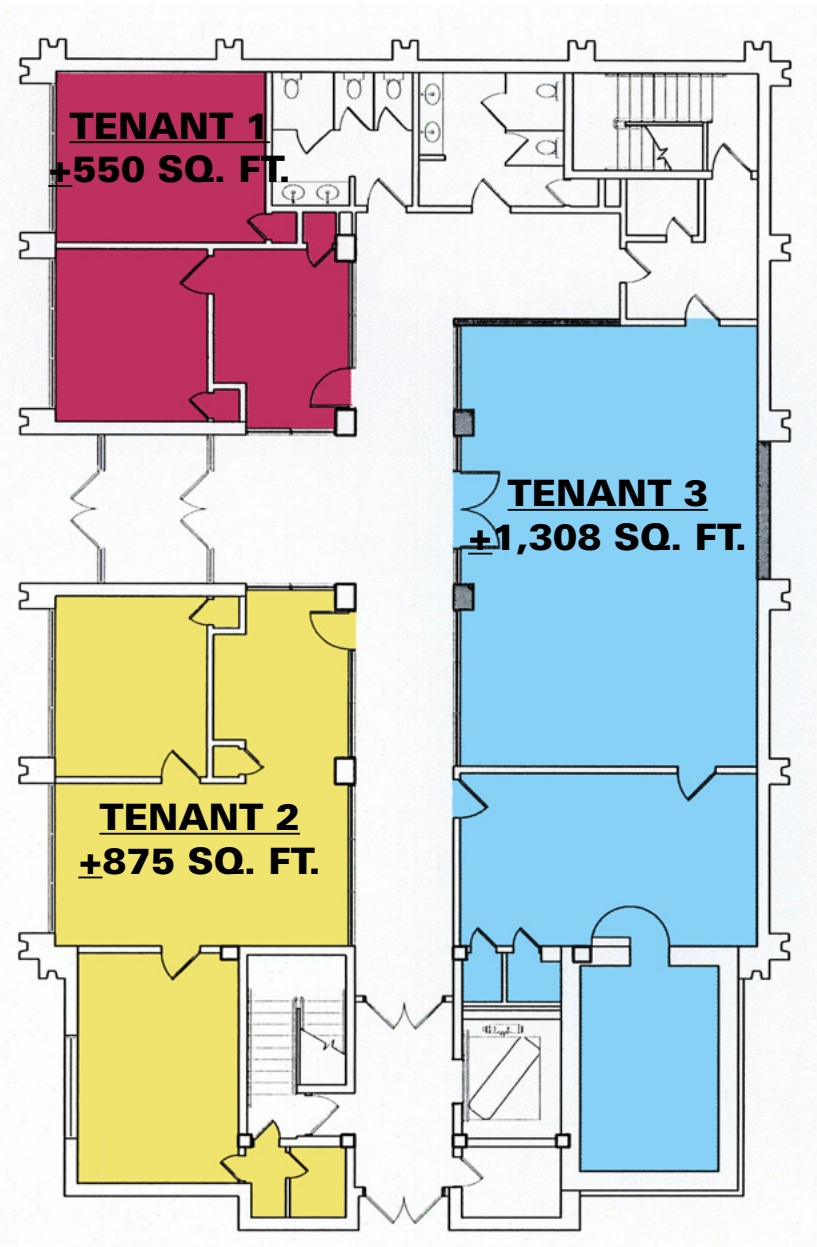
## **UNDER NEW OWNERSHIP**



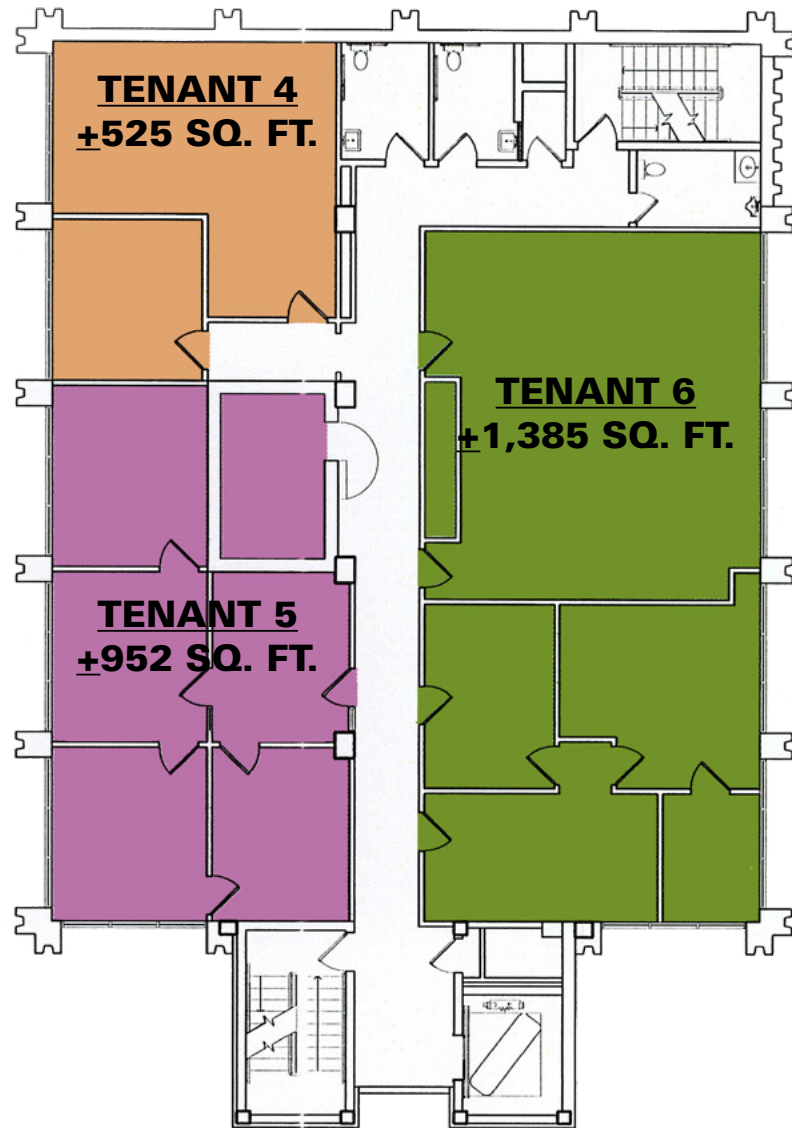
For more information:  
**MATT LEFFLER, CCIM**  
757.640.9284  
[MattLeffler@HarveyLindsay.com](mailto:MattLeffler@HarveyLindsay.com)

**HARVEY LINDSAY**  
COMMERCIAL REAL ESTATE

[www.harveylindsay.com](http://www.harveylindsay.com)

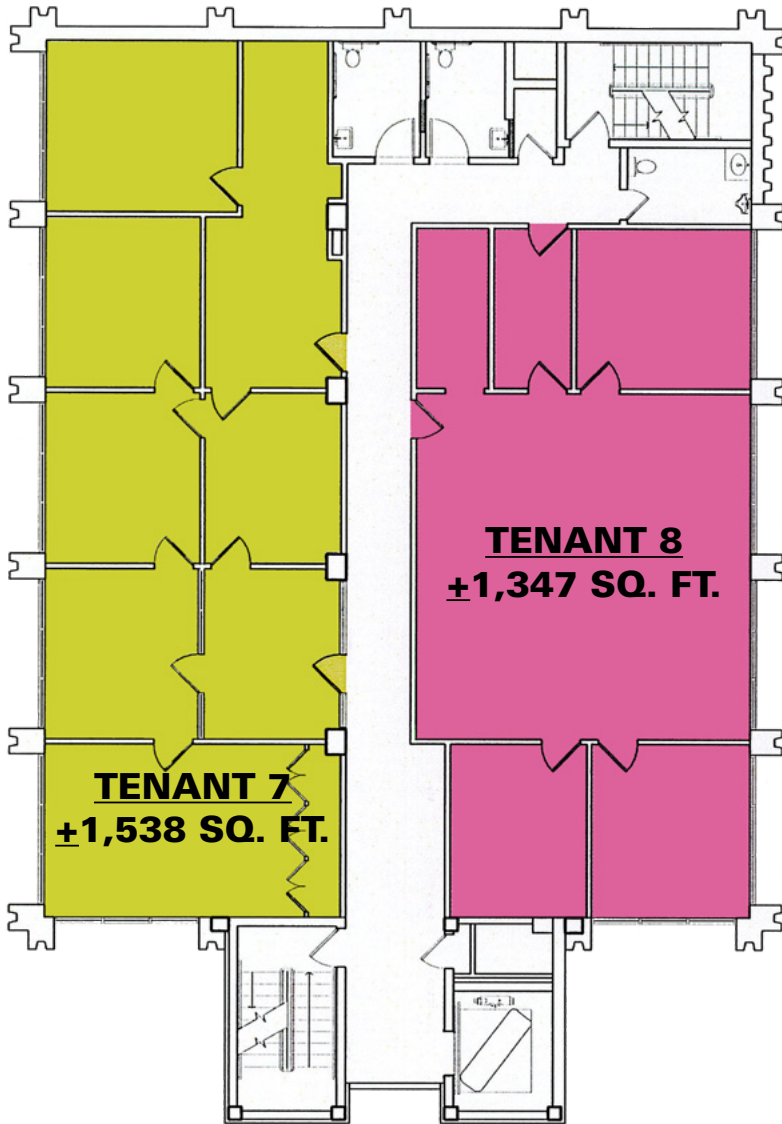


FIRST FLOOR

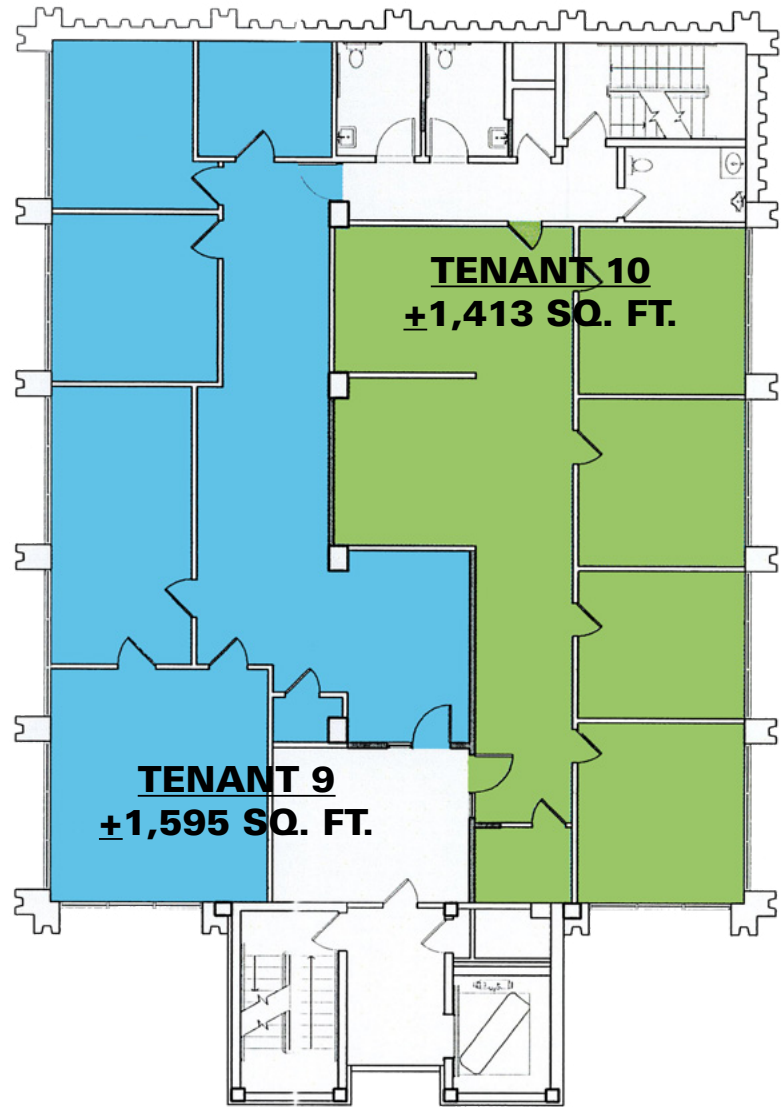


SECOND FLOOR





THIRD FLOOR



FOURTH FLOOR



# SITE IDENTIFICATION

2700 Washington Avenue | Newport News, VA





# PROXIMITY TO INTERSTATE

2700 Washington Avenue | Newport News, VA





# HIGHLIGHTS & FEATURES

2700 Washington Avenue | Newport News, VA



For more information:  
**MATT LEFFLER, CCIM**  
757.640.9284  
[MattLeffler@HarveyLindsay.com](mailto:MattLeffler@HarveyLindsay.com)

825 Diligence Drive • Suite 114  
Newport News, Virginia 23606  
757-873-2020  
[www.HarveyLindsay.com](http://www.HarveyLindsay.com)

**HARVEY LINDSAY**  
COMMERCIAL REAL ESTATE

The information contained herein has been obtained from sources believed to be reliable but is not warranted. We cannot be responsible for errors, omissions, withdrawal, or prior lease or sale.