

AVAILABLE FOR SUBLEASE



# 600 S. E STREET

PORTERVILLE, CA





# FOR SUBLEASE

## 600 S. E STREET



### PROPERTY FEATURES

**Total Building Size:** ±248,853 SF

**Space Available:** ±45,574 - 248,853 SF

**Office:** ±4,200 SF

**Lot Size:** 13.12 Acres

**Clear Height:** 15' - 23'

**Loading:** 6 Dock Doors  
5 Ground-Level Roll-Ups

**Column Spacing:** 48' x 50' typ.

**Canopy:** ±7,000 SF

**Main Power:** 4000 Amps, 277/480 V, 3 Ph, 4 Wire

**Zoning:** Industrial, County of Tulare

**Master Lease Expiration:** June 30, 2029

**Asking Terms:** \$0.40psf/month, Industrial Gross



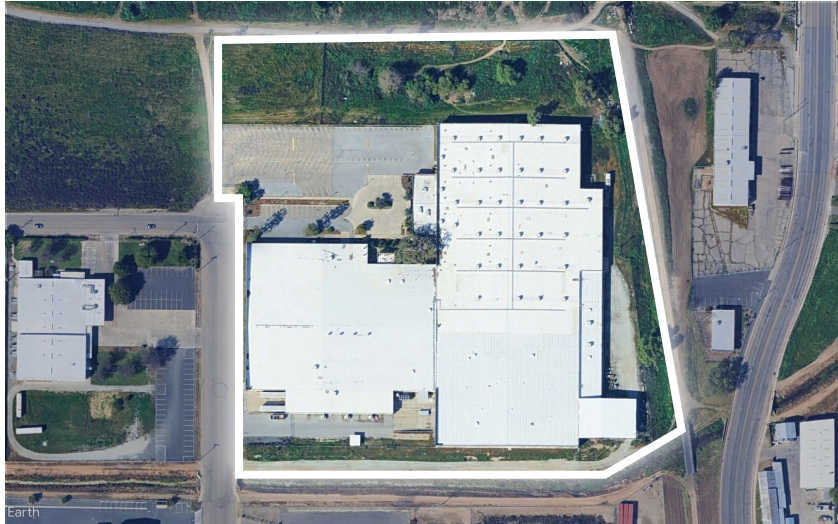
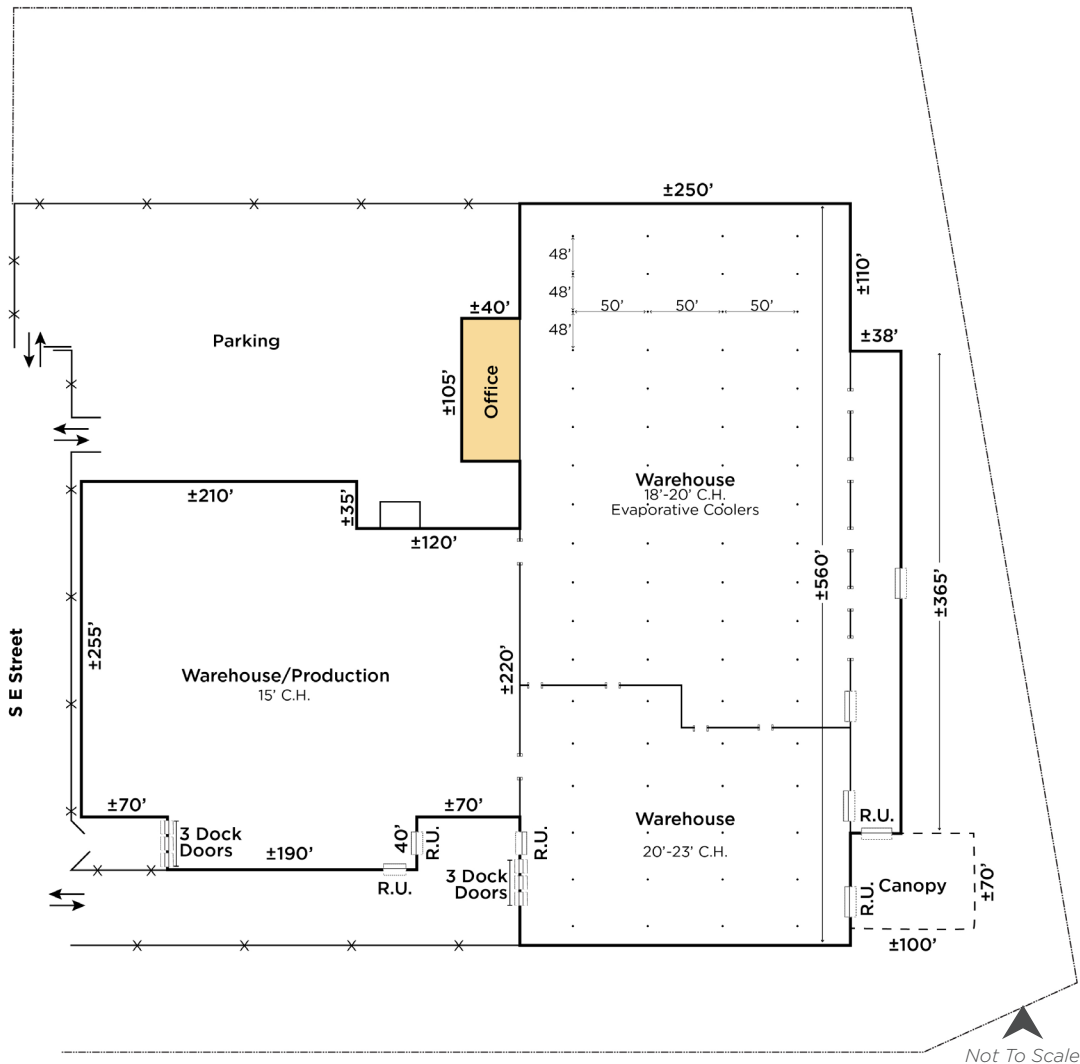


# FOR SUBLEASE

# 600 S. E STREET



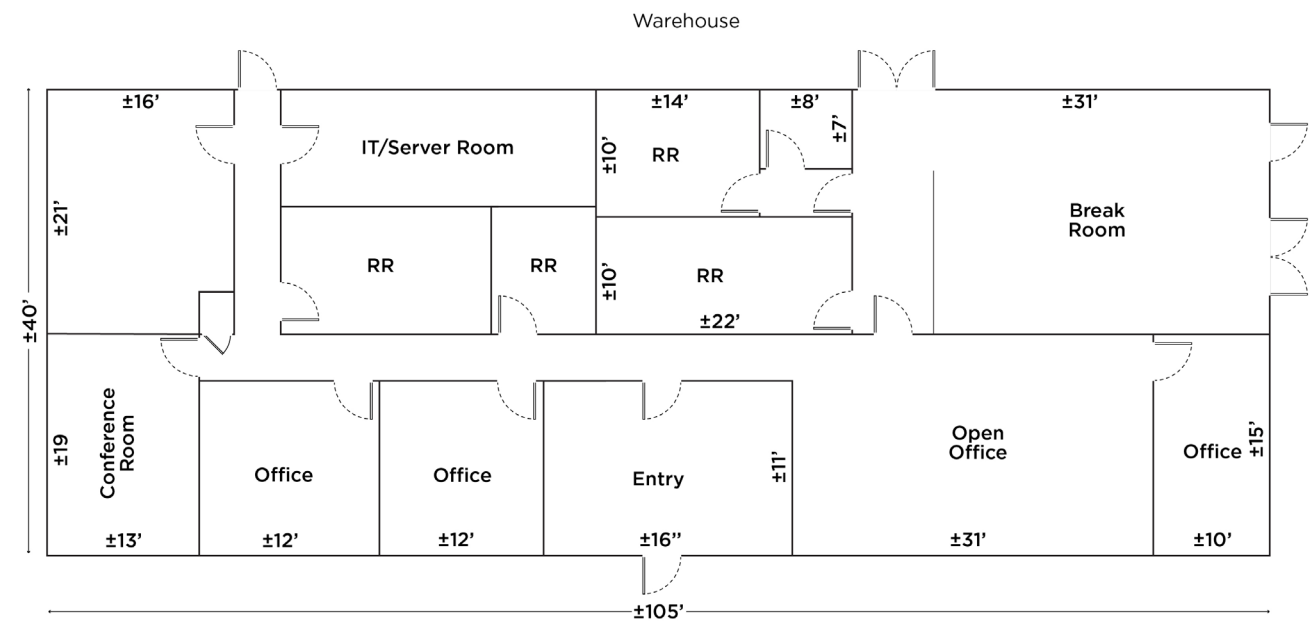
## SITE PLAN



# FOR SUBLEASE

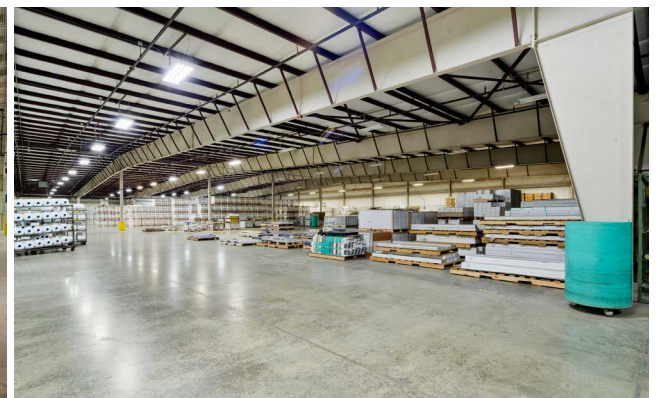
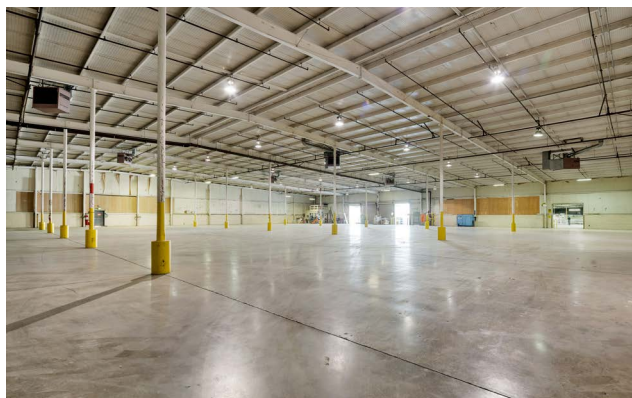
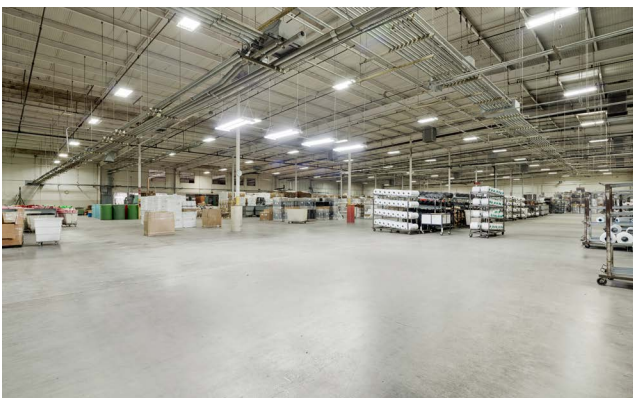
# 600 S. E STREET

## OFFICE FLOOR PLAN





# FOR SUBLEASE 600 S. E STREET





# FOR SUBLEASE 600 S. E STREET



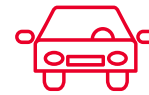
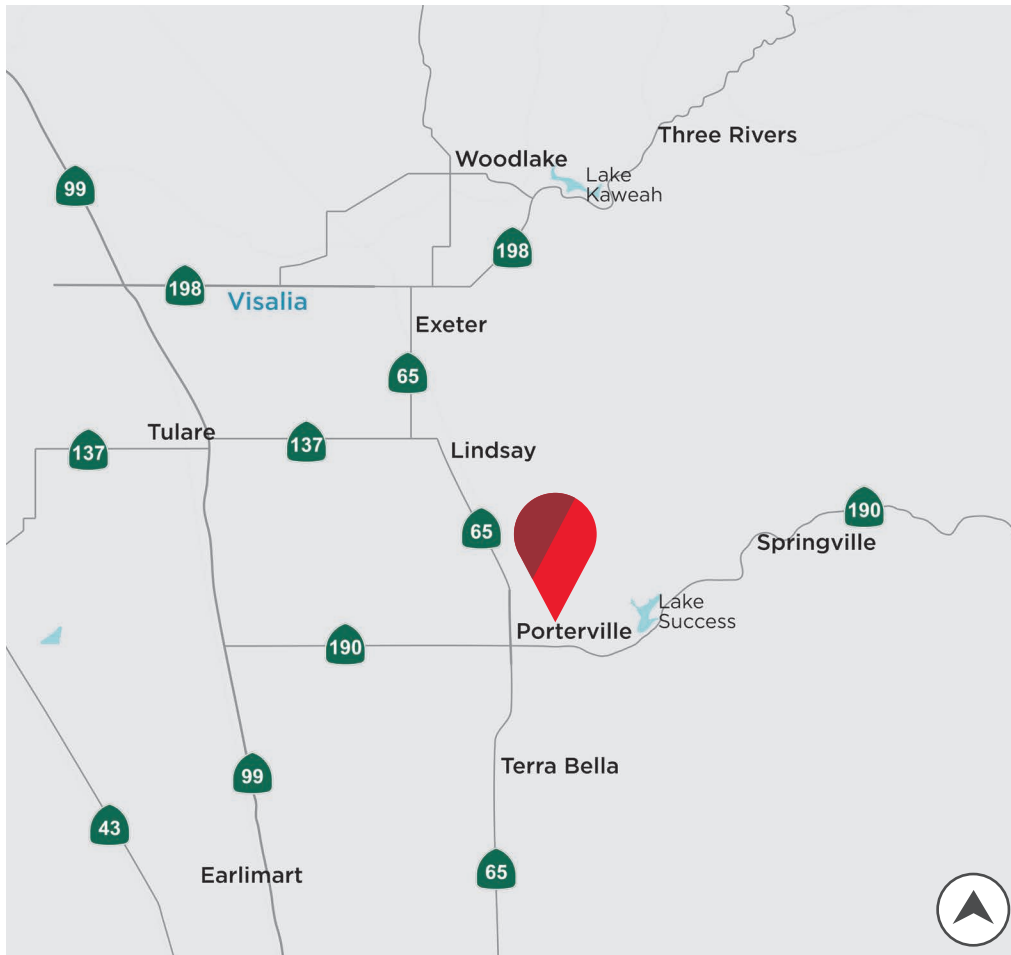


# FOR SUBLEASE

## 600 S. E STREET



### LOCATION MAP



**±1 MILE**

TO HWY 65



**±16 MILES**

TO HWY 99



**±5 MILES**

TO EAGLE MOUNTAIN CASINO



**±32 MILES**

TO LAKE SUCCESS



**±46 MILES**

TO BAKERSFIELD AIRPORT



**±74 MILES**

TO FRESNO AIRPORT



**For more information, please contact:**

**Scott Reynolds**

Director  
scott.reynolds@cushwake.com  
+1 661 330 7616  
Lic. #01382493

**Luke Napolitano**

Director  
luke.napolitano@cushwake.com  
+1 949 274 6889  
Lic. #02065599

**Coby Vance**

Senior Director  
coby.vance@cushwake.com  
+1 661 203 4400  
Lic. #01449929

**Wayne Kress, SIOR**

Executive Director  
wayne.kress@cushwake.com  
+1 661 706 5692  
Lic. #00834680

©2025 Cushman & Wakefield. All rights reserved. The information contained in this communication is strictly confidential. This information has been obtained from sources believed to be reliable but has not been verified. NO WARRANTY OR REPRESENTATION, EXPRESS OR IMPLIED, IS MADE AS TO THE CONDITION OF THE PROPERTY (OR PROPERTIES) REFERENCED HEREIN OR AS TO THE ACCURACY OR COMPLETENESS OF THE INFORMATION CONTAINED HEREIN, AND SAME IS SUBMITTED SUBJECT TO ERRORS, OMISSIONS, CHANGE OF PRICE, RENTAL OR OTHER CONDITIONS, WITHDRAWAL WITHOUT NOTICE, AND TO ANY SPECIAL LISTING CONDITIONS IMPOSED BY THE PROPERTY OWNER(S). ANY PROJECTIONS, OPINIONS OR ESTIMATES ARE SUBJECT TO UNCERTAINTY AND DO NOT SIGNIFY CURRENT OR FUTURE PROPERTY PERFORMANCE.

