



W. Irlo Bronson Blvd.

192

56,500 AADT

Kitanda

DOLLAR TREE

1,500 SF Available Under Construction

Up to 3,050 SF Available

Up to 3,750 SF Available

Styles Blvd.

Restaurant | Retail | Multi-Tenant For Lease

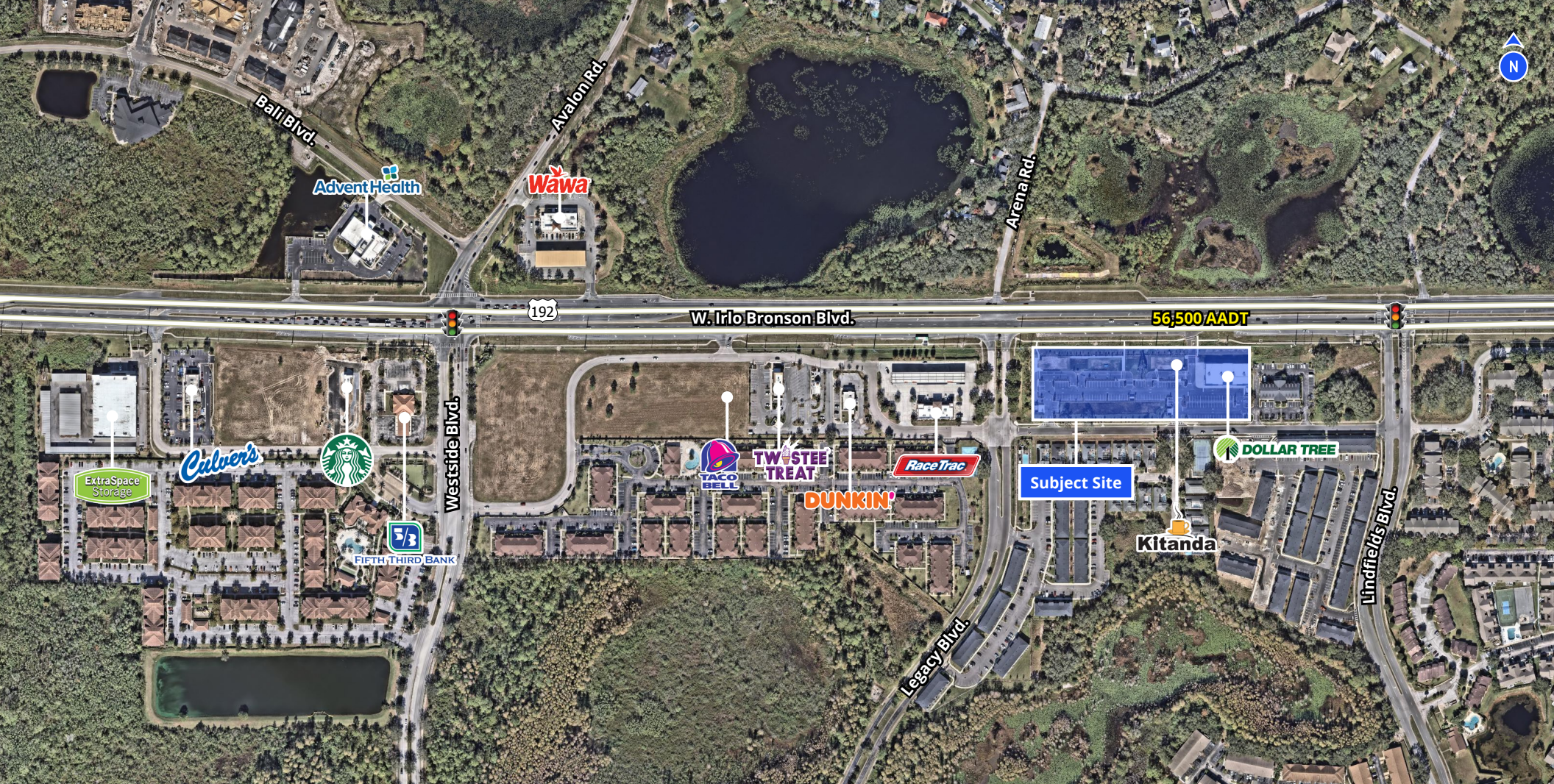
Legacy Plaza

8840 W Irlo Bronson Memorial Hwy. | Kissimmee, FL

Joanna Robinson
Senior Vice President
+1 407 362 6150
joanna.robinson@colliers.com

Nathan Cutchin
Vice President
+1 407 843 9673
nathan.cutchin@colliers.com





Property Highlights

- 19,800 SF retail development available for lease.
- Restaurant pads and multi-tenant space available.
- New retail development near Disney World and Margaritaville Resort Orlando.
- Great access and visibility from US-192/W Irlo Bronson Memorial Hwy. (56,500 AADT).
- Situated between US Hwy. 27 and SR-429; serving the Four Corners and Horizons West markets.

Area Demographics



Population

1-Mile: 6,367
3-Mile: 40,470
5-Mile: 84,526



Daytime Population

1-Mile: 6,260
3-Mile: 36,946
5-Mile: 70,149



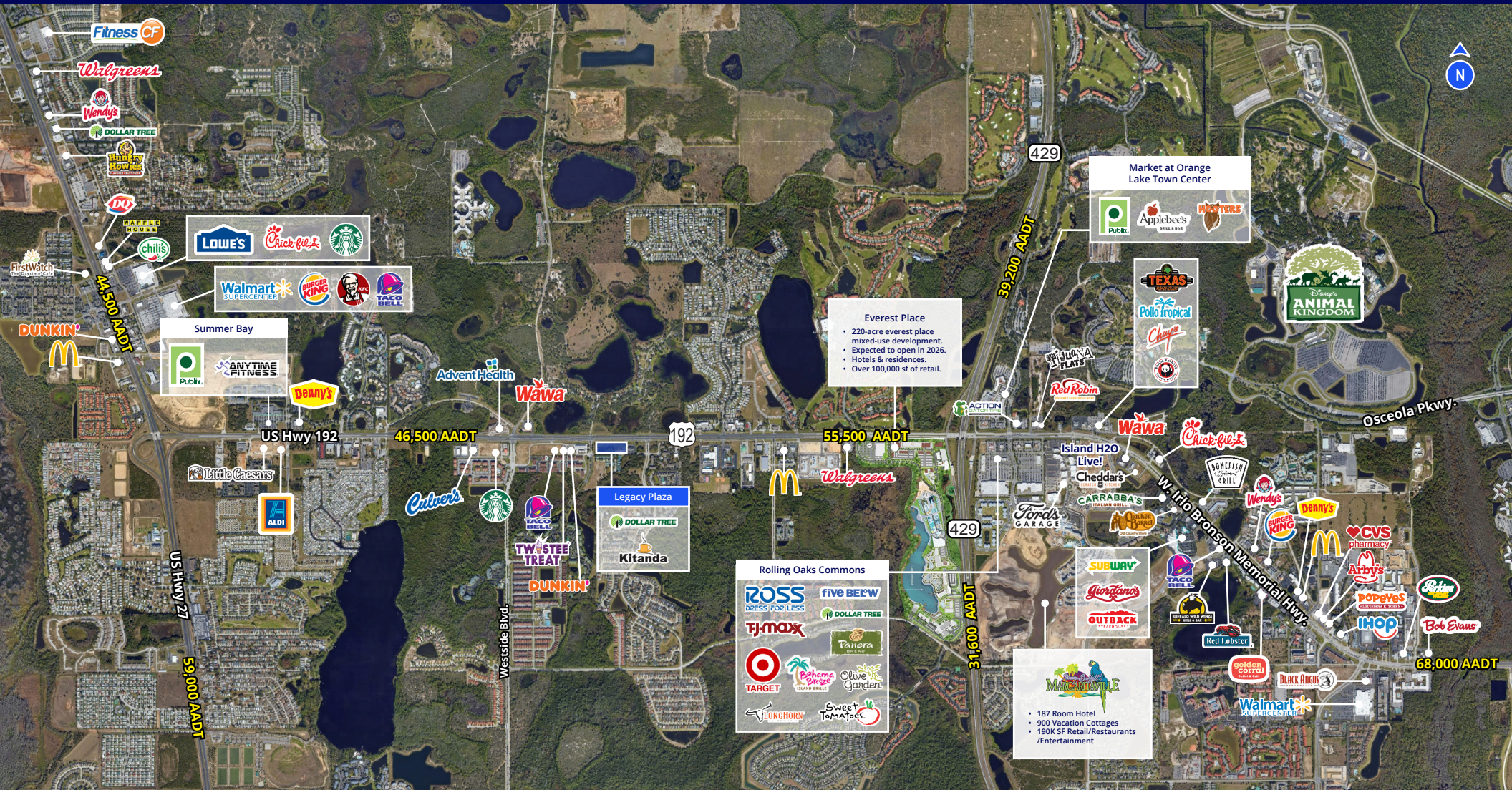
Average HH Income

1-Mile: \$105,885
3-Mile: \$84,027
5-Mile: \$100,499



Households

1-Mile: 2,503
3-Mile: 15,957
5-Mile: 30,964





Contact Us

Joanna Robinson

Senior Vice President

+1 407 362 6150

joanna.robinson@colliers.com

Nathan Cutchin

Vice President

+1 407 843 9673

nathan.cutchin@colliers.com



Colliers

255 S Orange Ave #1300

Orlando, FL 32801

This document has been prepared by Colliers International for advertising and general information only. Colliers International makes no guarantees, representations or warranties of any kind, expressed or implied, regarding the information including, but not limited to, warranties of content, accuracy and reliability. Any interested party should undertake their own inquiries as to the accuracy of the information. Colliers International excludes unequivocally all inferred or implied terms, conditions and warranties arising out of this document and excludes all liability for loss and damages arising there from. This publication is the copyrighted property of Colliers International and/or its licensor(s). ©2025. All rights reserved.