

INDUSTRIAL BUILDING *FOR SALE OR LEASE*

1924 FRANK STILES ST, SOUTH EL MONTE, CA 91733



Property Highlights

Freestanding building

Two 12'x15' GL doors

Building completely
refurbished

Paved and fenced rear yard

New LED lighting

Quiet cul-de-sac street

1,320 SF offices

13,531 SF

BUILDING SIZE

TBD

SALE PRICE

\$1.45

LEASE RATE/SF

RICHARD ABDULIAN

213.225.7232

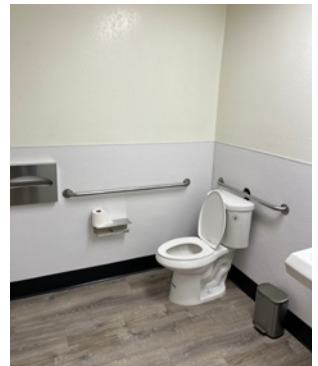
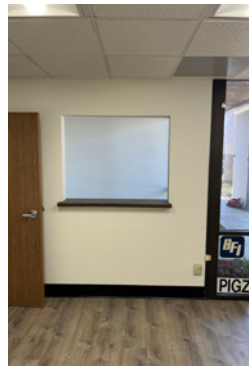
richard.abdulian@kidder.com

LIC N° 00884948

KIDDER.COM

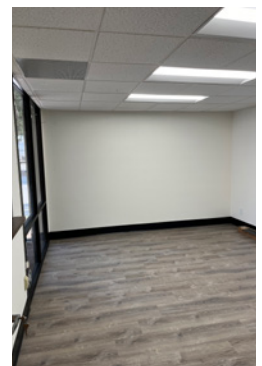
This information supplied herein is from sources we deem reliable. It is provided without any representation, warranty, or guarantee, expressed or implied as to its accuracy. Prospective Buyer or Tenant should conduct an independent investigation and verification of all matters deemed to be material, including, but not limited to, statements of income and expenses. Consult your attorney, accountant, or other professional advisor.

km Kidder
Mathews

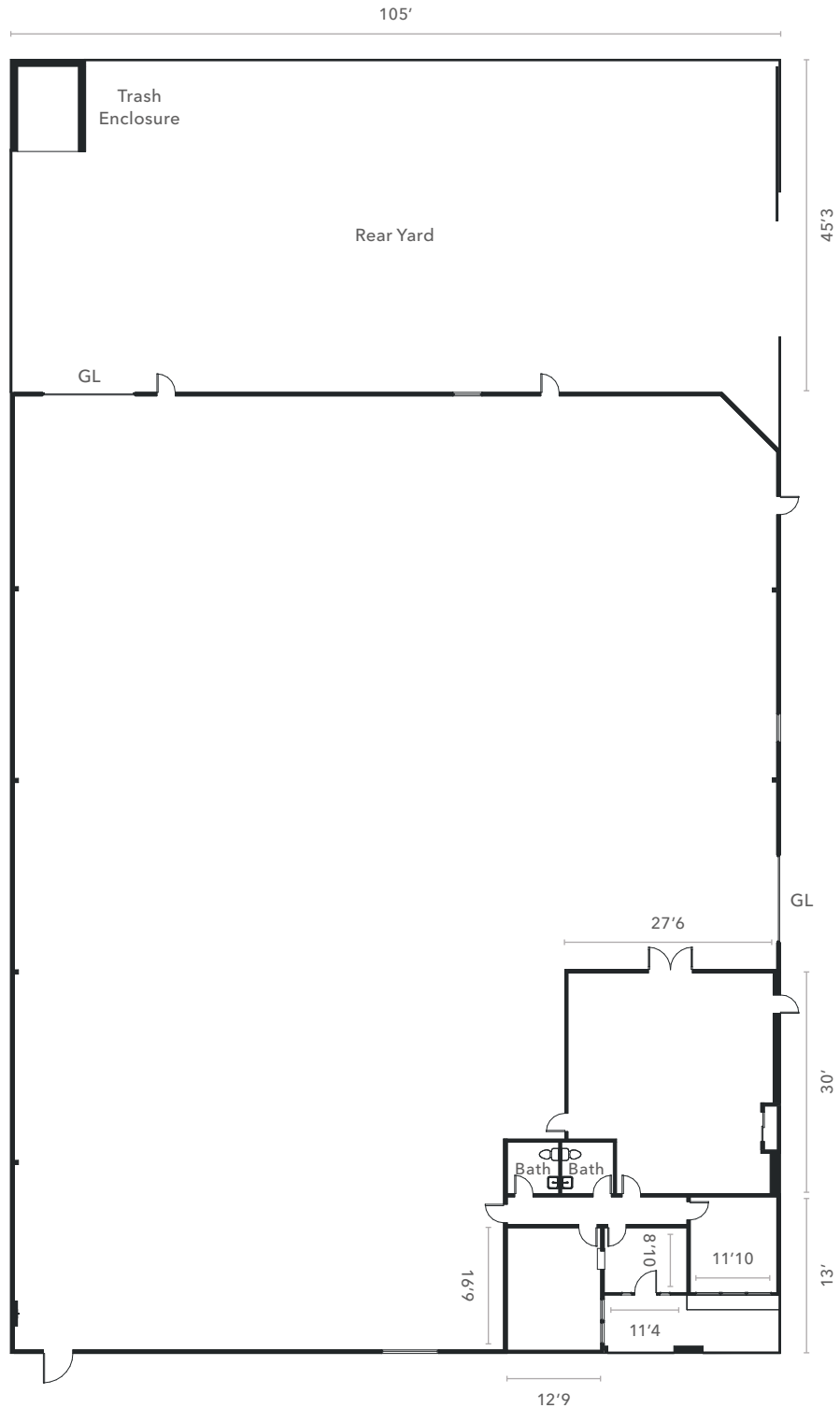


PROPERTY INFORMATION

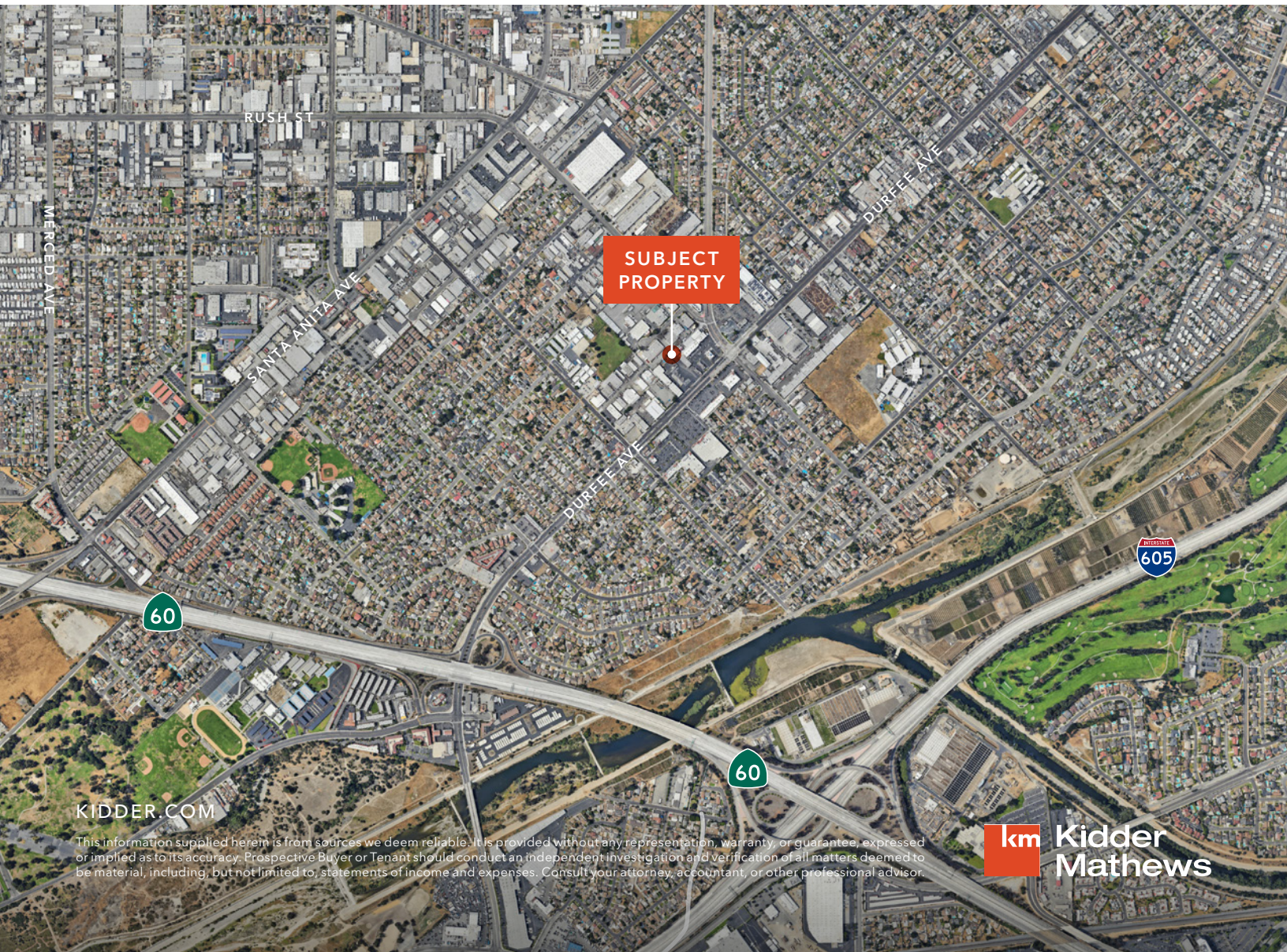
SALE PRICE	TBD
LEASE RATE/MO	\$19,620
LEASE RATE/SF	\$1.45
BUILDING SF	13,531 SF
LAND SF	26,252 SF
OFFICE SF	1,320 SF
CONSTRUCTION	Tilt-wall
CLEAR HEIGHT	15'
PARKING SPACES	14/more possible
ZONING	SEM
LOADING DOORS	Two 12'x 15' GL
POWER	400A, 120/208V, 3 Phase
LIGHTING	LED
YARD	Fenced / paved







FRANK STILES ST



**SUBJECT
PROPERTY**