



Avison Young - Raleigh-Durham | 5440 Wade Park Boulevard, Suite 200 | Raleigh, NC 27607

FOR LEASE

Arena Centre

1511 Sunday Drive, Raleigh, NC 27607

**AVISON
YOUNG**

Property highlights

- New spec space available
- Common area conference room with TV, seats 24 and expandable to 48
- Building signage opportunity for larger square foot tenants
- Floor-to-ceiling glass provides abundant natural light
- Professional management and maintenance
- Well-appointed two-story atrium lobby
- Central location with easy access to I-40, I-440 Beltline, I-540, Research Triangle Park, RDU International Airport, and Cary

Offering Summary

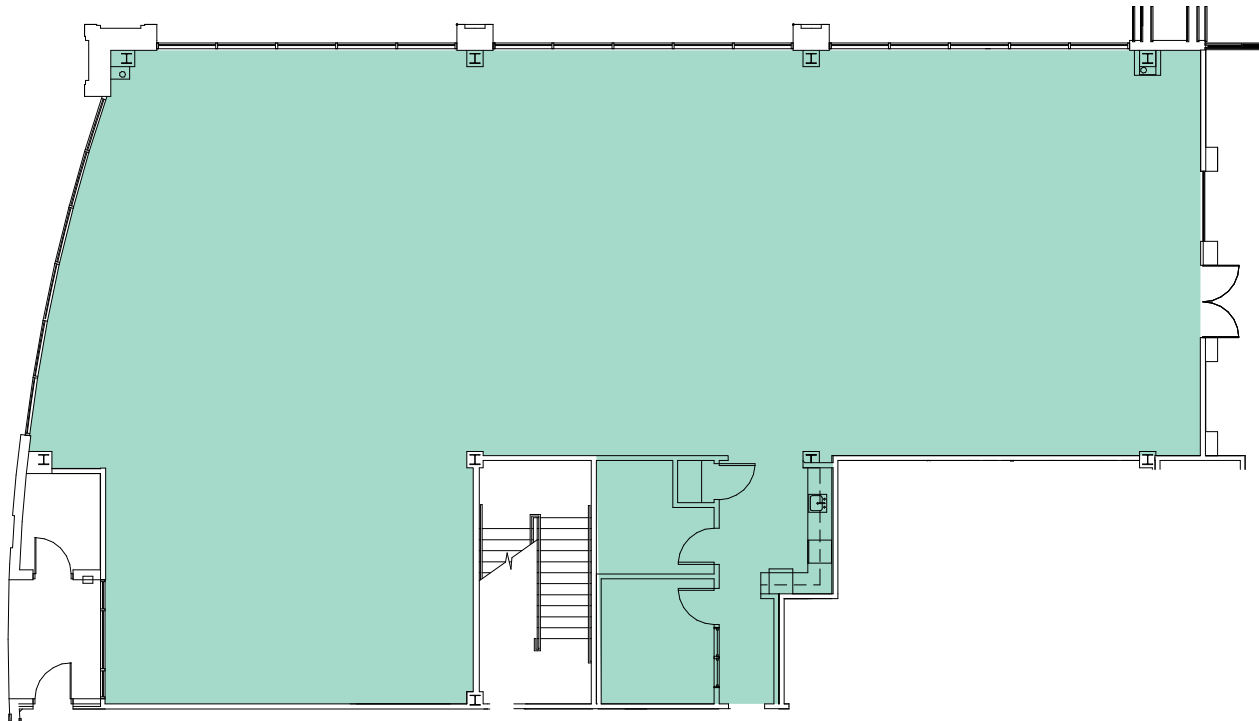
Lease Rate: \$30.50/sf, Full Service

Building Size: 62,000 SF

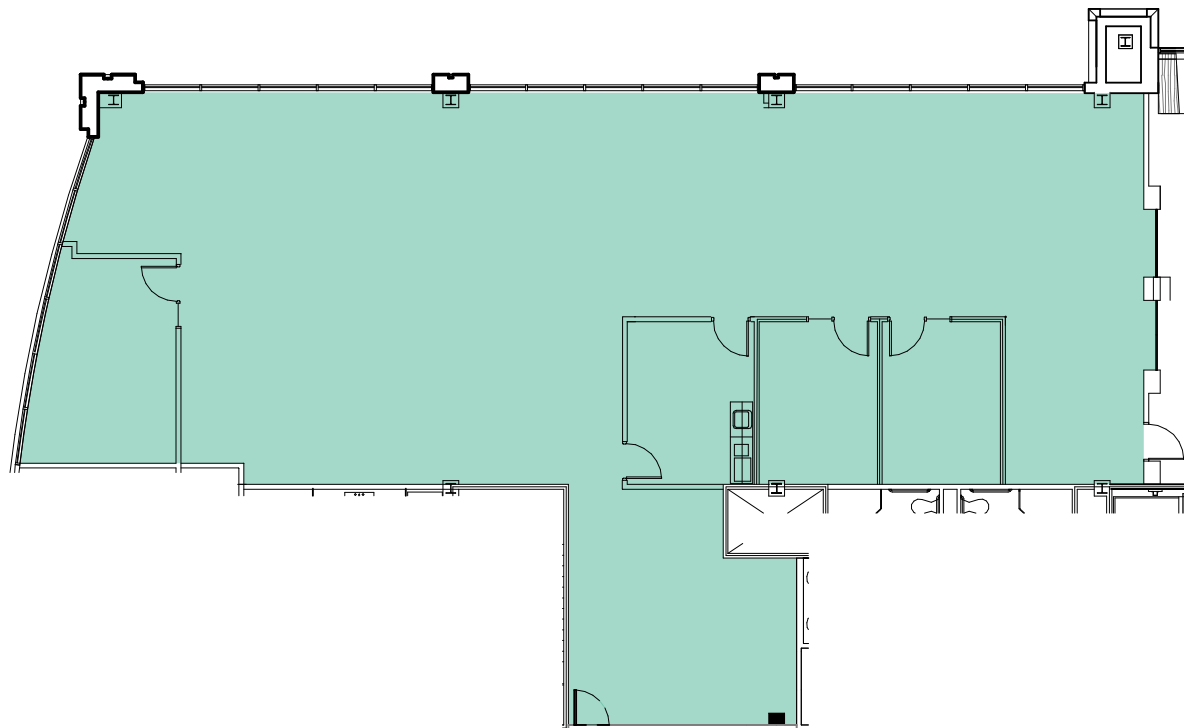
Available SF: 4,068 - 9,383 SF



Floor Plans

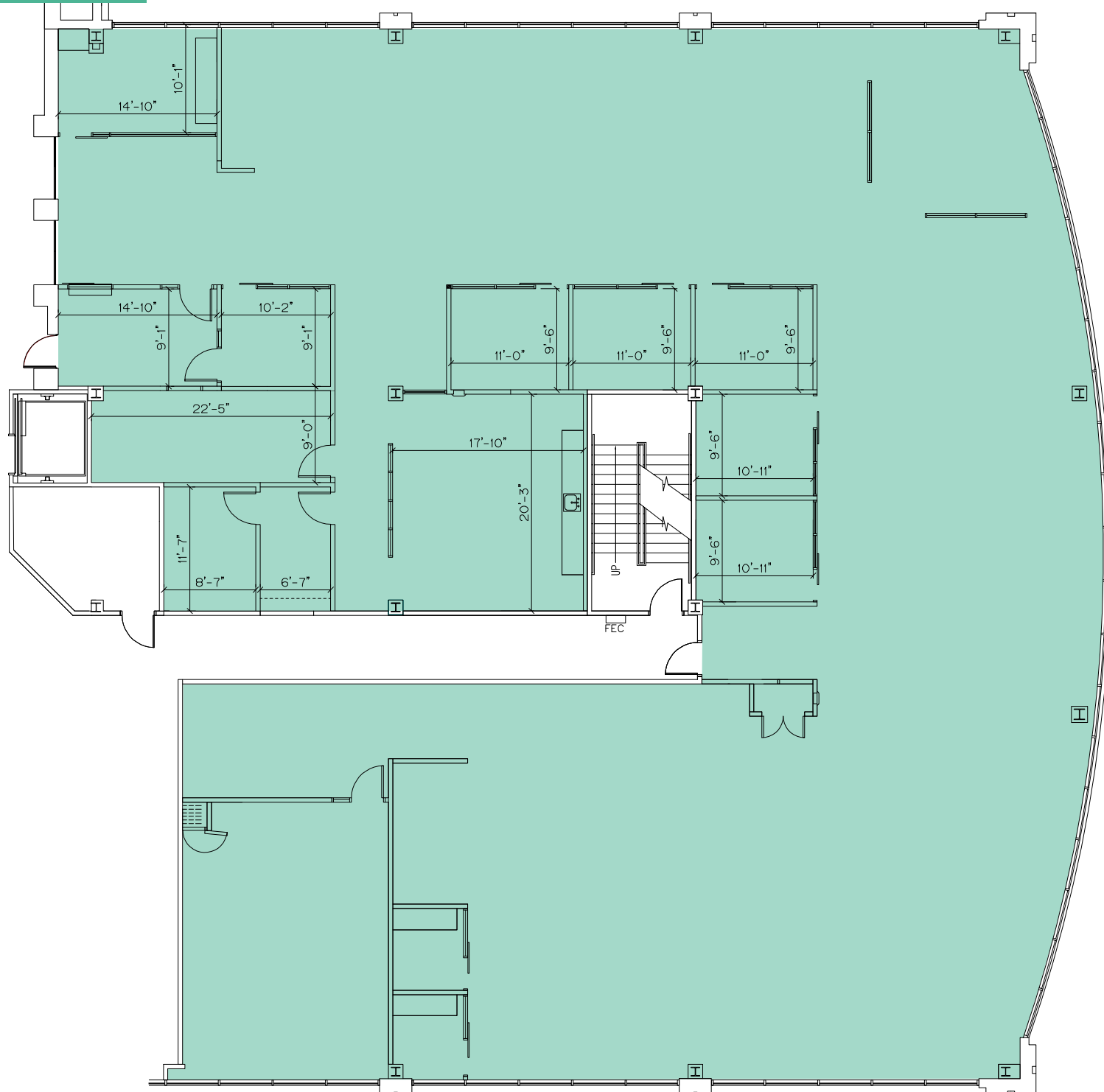


Suite 120 - 4,877 sf



Suite 220 - 4,068 sf (*New spec space*)

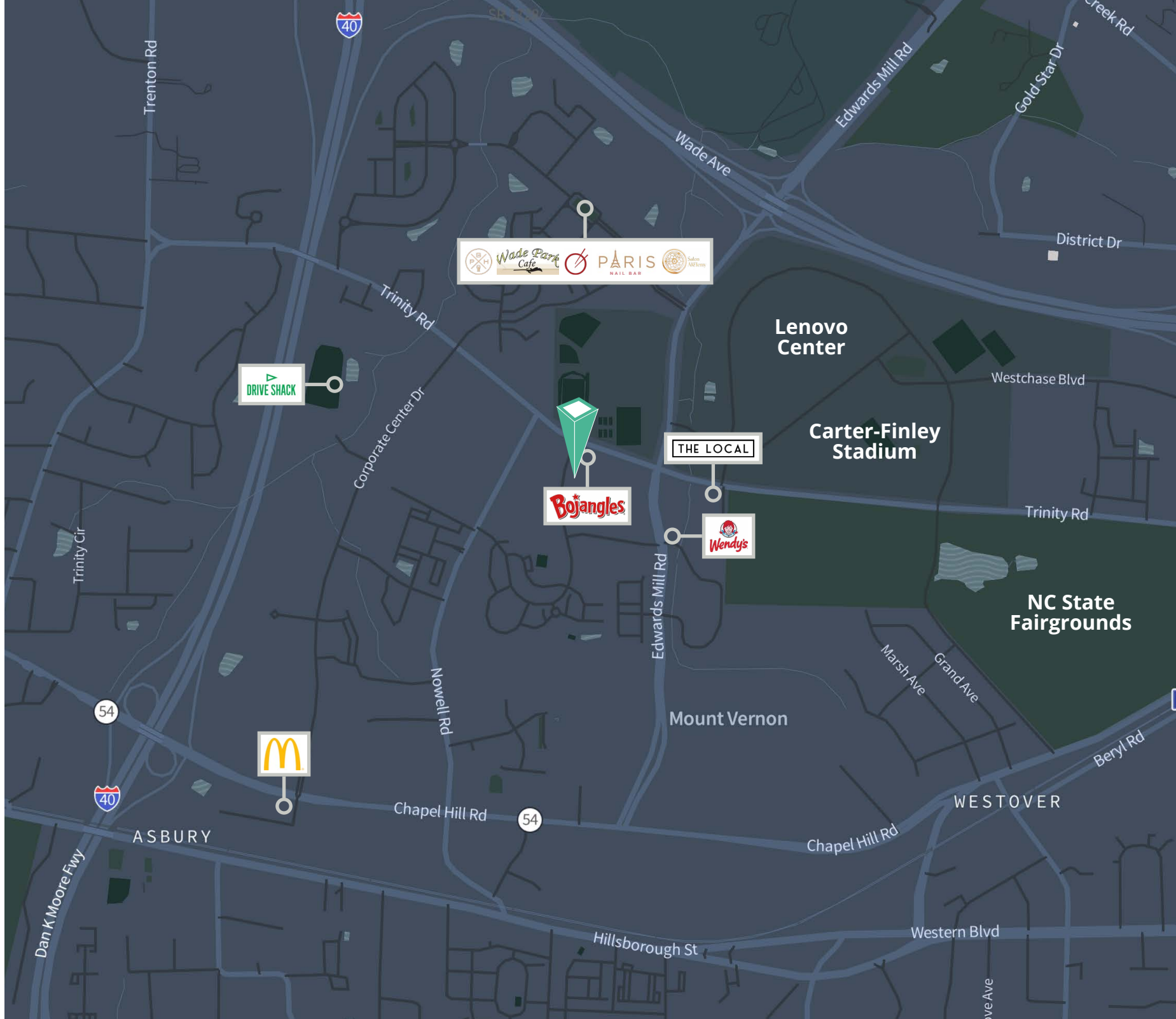
Floor Plans



Spec Suite 220



Retailer map



Demographics

206,192

Total population
within a five-mile
radius

22,634

Total businesses
within a five-mile
radius

116,545

Total employees
within a five-mile
radius

101,886

Households
within a five-mile
radius

\$103,519

Avg. hh income
within a five-mile
radius

\$518,963

Avg. house value
within a five-mile
radius

Let's talk.

Michael Vulpis

Senior Vice President, Office Leasing & Sales

D 919 420 1562

michael.vulpis@avisonyoung.com

Avison Young - Raleigh-Durham
5440 Wade Park Boulevard, Suite 200 | Raleigh, NC 27607

© 2025. Avison Young - Raleigh-Durham. Information contained herein was obtained from sources deemed reliable and, while thought to be correct, have not been verified. Avison Young - Raleigh-Durham does not guarantee the accuracy or completeness of the information presented, nor assumes any responsibility or liability for any errors or omissions therein.

**AVISON
YOUNG**
