

Lawnfield Business Park

9812-9906 SOUTHEAST EMPIRE COURT, CLACKAMAS, OR 97015



earth
mama
-ORGANICS-

SHIPPING

FOR LEASE

 **MACADAM
FORBES**
COMMERCIAL REAL ESTATE SERVICES

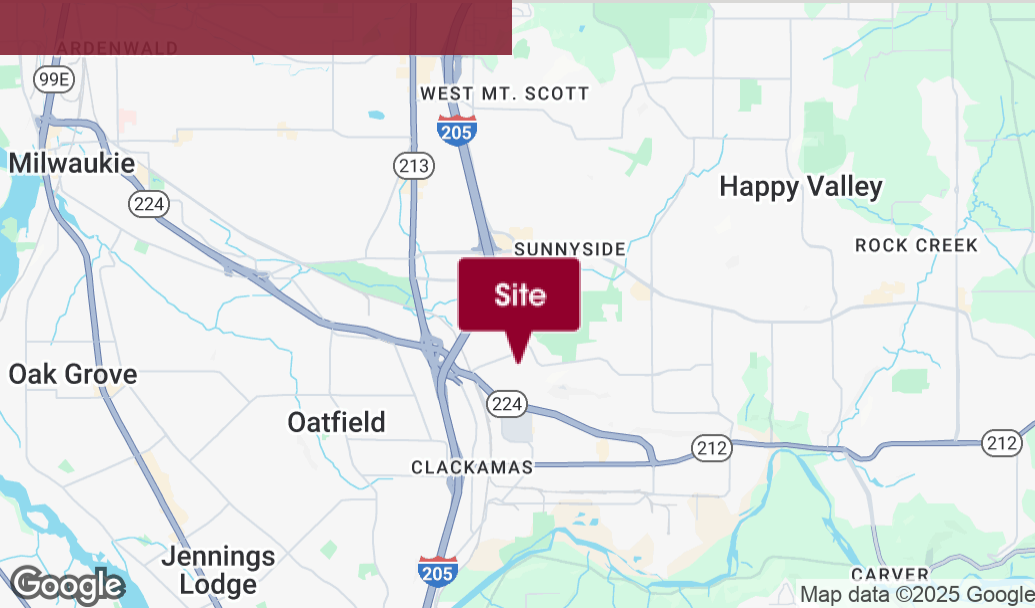
Brett Bayne
503.972.7280
bayne@macadamforbes.com
Licensed in OR

2 Centerpointe Drive, Suite 500 | Lake Oswego, OR 97035 | WWW.MACADAMFORBES.COM | 503.227.2500

All of the information contained herein was obtained either from the owner or other parties we consider reliable. We have no reason to doubt its accuracy, however we do not guarantee it.

FOR LEASE

9812-9906 Southeast Empire Court, Clackamas, OR 97015



PROPERTY DESCRIPTION

Two Building Business Park with two suites available; one in each building.

PROPERTY HIGHLIGHTS

- Dock & grade loading specific to each suite
- 3-Phase power
- 18' Clear height
- Multiple office sizes and configuration

OFFERING SUMMARY

Lease Rate:	\$3,300.00 - 3,447.00 per month (NNN)
Triple Nets Est.	\$0.28/SF
Available SF:	3,134 - 3,300 SF



Brett Bayne

503.972.7280

bayne@macadamforbes.com

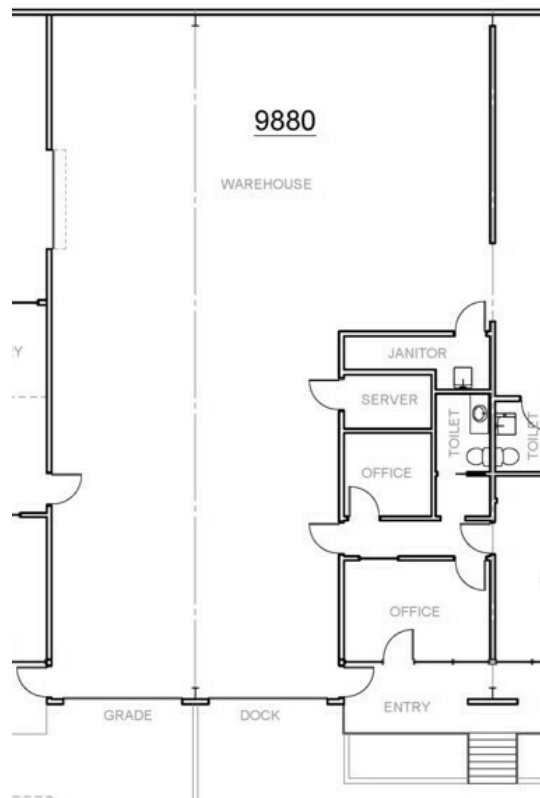
Licensed in OR

All of the information contained herein was obtained either from the owner or other parties we consider reliable. We have no reason to doubt its accuracy, however we do not guarantee it.

MACADAMFORBES.COM | 503.227.2500

FOR LEASE

9812-9906 Southeast Empire Court, Clackamas, OR 97015



9880 SE Empire Court



9852 SE Empire Court, Suite B

AVAILABLE SPACES

SUITE	SIZE (SF)	LEASE TYPE	LEASE RATE	DESCRIPTION
■ 9880 SE Empire Court	3,134 SF	NNN	\$3,447 per month	509 SF Office, 1 Dock Door, 1 Grade Door
■ 9852 SE Empire Court, Suite B	3,300 SF	NNN	\$3,300 per month	Triple Nets: \$924.00, 600 SF office, one grade door (12' x 14'), 3 phase power, and 18' clear height.



Brett Bayne
503.972.7280
bayne@macadamforbes.com
Licensed in OR

All of the information contained herein was obtained either from the owner or other parties we consider reliable. We have no reason to doubt its accuracy, however we do not guarantee it.

MACADAMFORBES.COM | 503.227.2500