

For Lease

Turnkey Restaurant on S. Sierra St.



243 S. Sierra St.
Reno, NV 89501

Paul Evans
Senior Vice President
775.745.8100
pevans@logicCRE.com
S.0193234

Rylee Buckmaster
Associate
775.217.0297
rbuckmaster@logicCRE.com
S.0200156

Listing Snapshot



\$3.50 PSF NNN
Lease Rate



± 1,950 SF
Available Square Footage



\$0.42
Estimated NNN

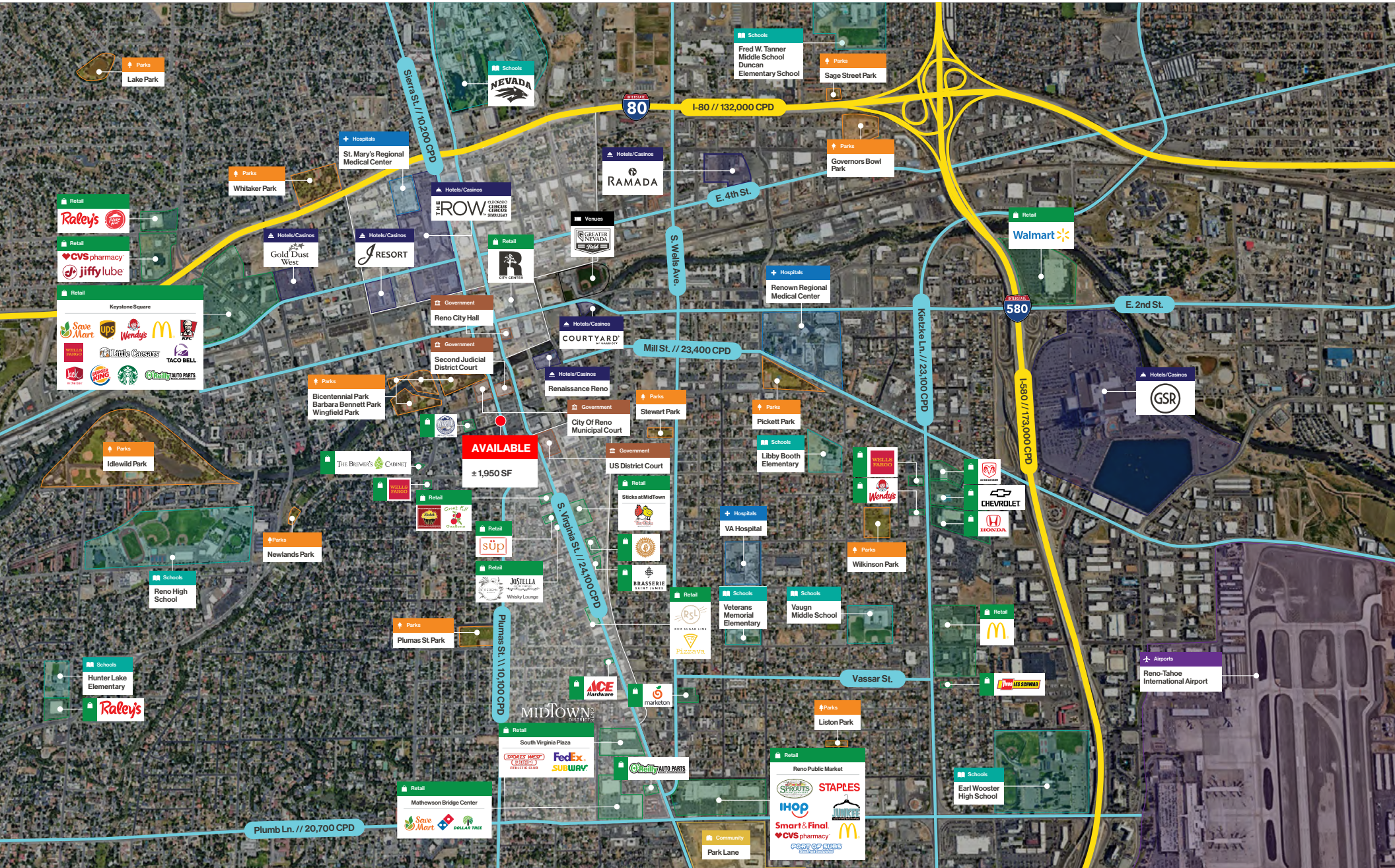
Property Highlights

- Standalone 2nd-gen restaurant space
- Commercial kitchen with a hood and grease interceptor in place
- Well positioned on Sierra St. in Downtown Reno
- Restaurant FF&E to remain (equipment list upon request)
- Walk score | 95 walker's paradise

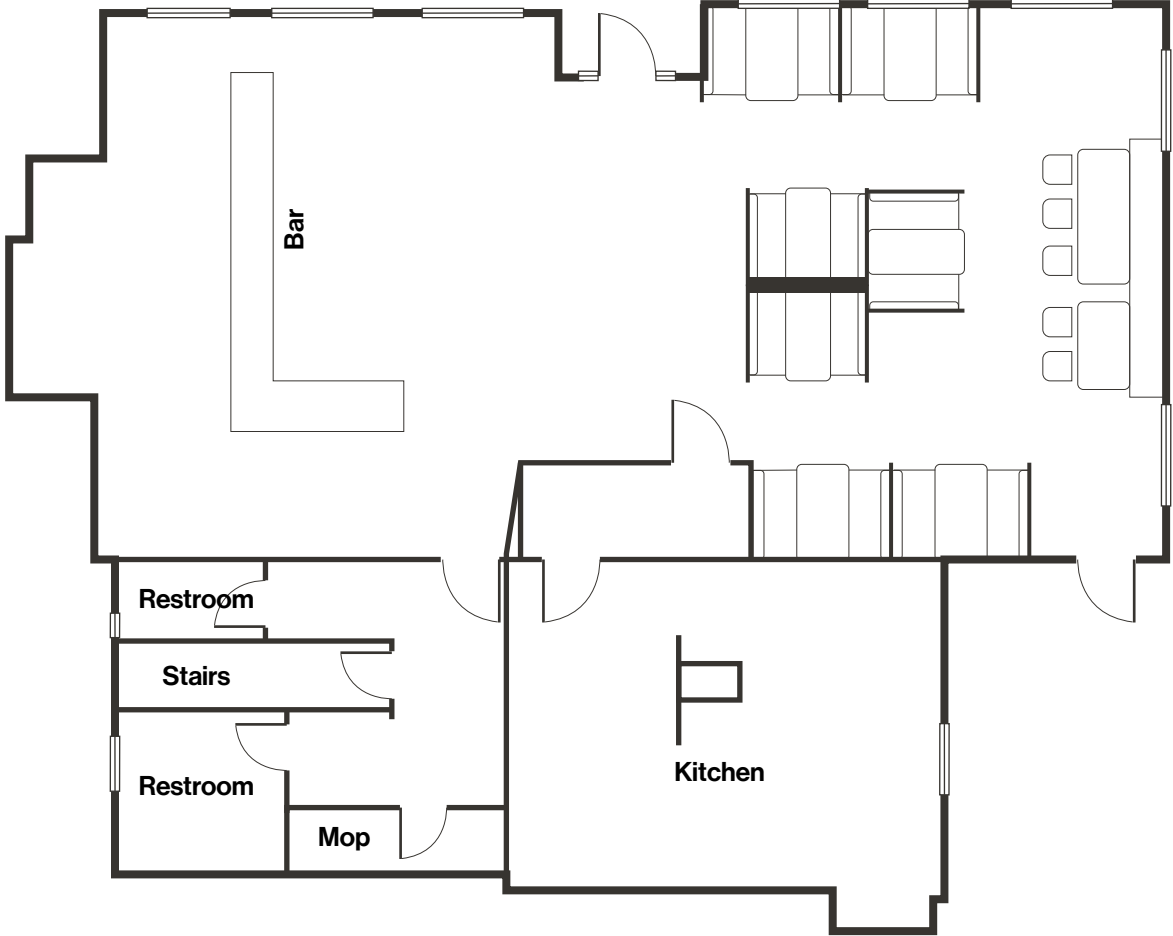
Demographics

	1-mile	3-mile	5-mile
2025 Population	21,165	138,053	245,865
2025 Average Household Income	\$85,041	\$89,153	\$100,534
2025 Total Households	12,275	59,901	103,263





Floor Plan | ± 1,950 SF



[Click for a Virtual Tour](#) 

Property Photos



LOGIC Commercial Real Estate

Specializing in Brokerage and Receivership Services



Join our email list and
connect with us on LinkedIn

The information herein was obtained from sources deemed reliable; however LOGIC Commercial Real Estate makes no guarantees, warranties or representation as to the completeness or accuracy thereof.

For inquiries please reach out to our team.

Paul Evans

Senior Vice President
775.745.8100
pevans@logicCRE.com
S.0193234

Rylee Buckmaster

Associate
775.217.0297
rbuckmaster@logicCRE.com
S.0200156