



1020 Market Ave N
Canton, OH 44702



- 148,000 SF Building (owner will consider subdividing)
- **Located in an opportunity zone**
- Furniture available
- Full service cafeteria
- Entire interior was recently updated
- 685 surface parking spaces
- High speed internet available
- Downtown location on major street across from the Canton Memorial Civic Center and Cultural Center for the Arts.

Sean Sanford

P 330 284 0331

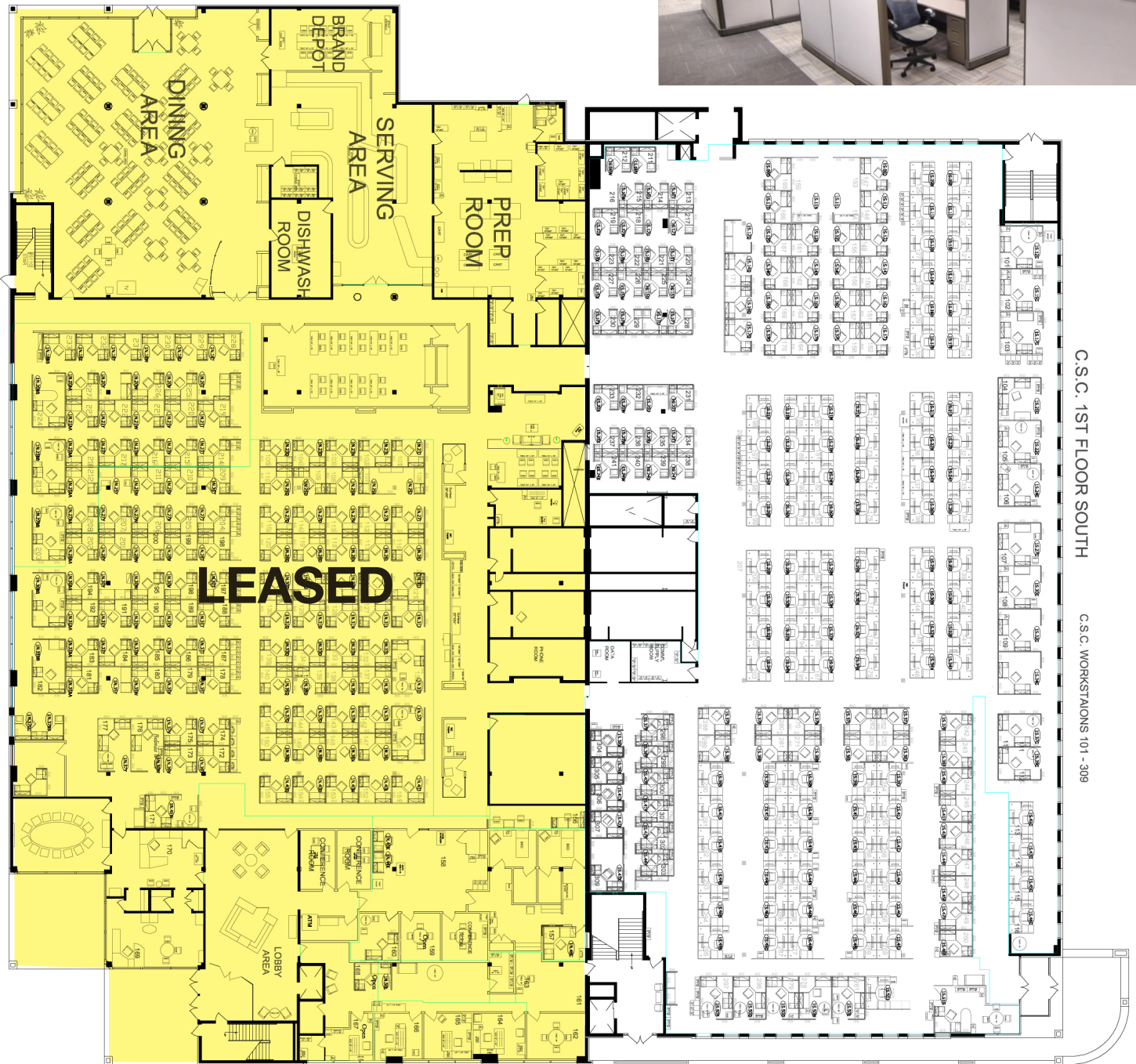
sean@naispring.com

- TOTAL SQUARE FOOTAGE
148,003 RSF (860 occupants at max capacity)
- SALE PRICE \$3,900,000.00
- 65,000/SF Available for Lease
- LEASE RATE \$5.00/SF/NNN
- YEAR BUILT
1954 - North addition completed in 1981
- ZONING - CC-B5
- NUMBER OF FLOORS
2 above grade, North and South Wings
1 below grade, South Wing
- CAFETERIA
Full service kitchen
Average age of equipment – 15 years
Seating for 176
Patio for outdoor dining
- AVERAGE MONTHLY UTILITY COSTS
Electricity - \$0.17/SF - \$26,042
Gas - \$0.01/SF - \$3899
Water - \$0.005/SF - \$900
- ROOF - Replaced in 2011
- 1,280/SF Freestanding garage
- PARKING - 685 spots on lot - Resurfaced in 2013
- RENOVATIONS
2000 – workstations, wallpaper, cabling, lobby, cafeteria, restrooms
2013 – lobby and restrooms remodeled, carpet replaced throughout entire building, cafeteria updates
- HVAC
Chillers - Two (2) Trane - replaced in 2019
Six (6) air handlers – Are original to construction
Boilers - Two (2) gas fired - replaced in 1999
Life Safety Generator and UPS (closet)
Chrysler 318 motor natural gas generator
- ELECTRICAL
Areas upgraded in 2000 to add panels
Winco transfer switch
- BUILDING MAINTENANCE SYSTEM
Niagara Based System – updated in 2014





First Floor



C.S.C. 1ST FLOOR SOUTH

C.S.C. WORKSTATIONS 101 - 309

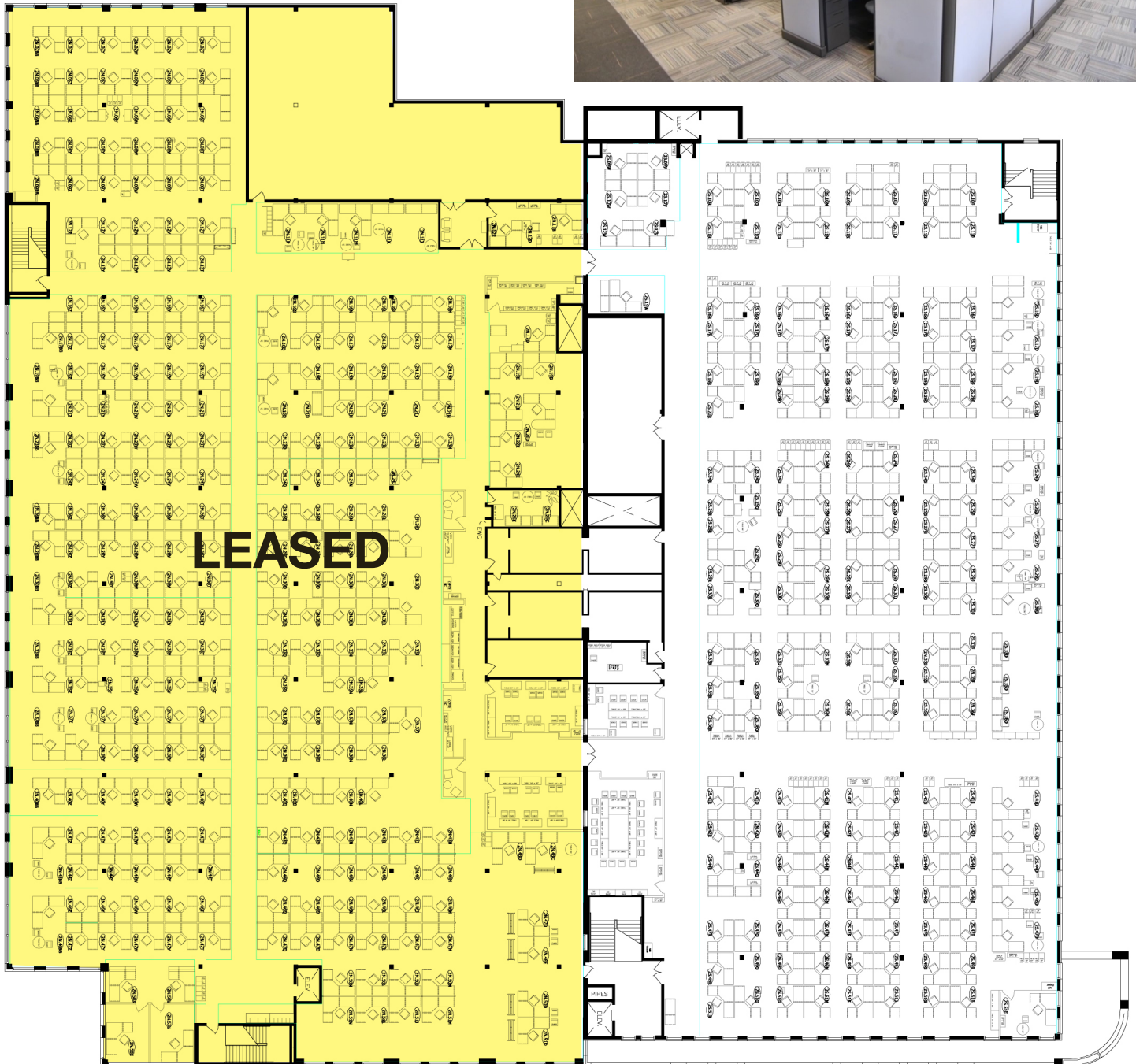
NO WARRANTY OR REPRESENTATION, EXPRESS OR IMPLIED, IS MADE AS TO THE ACCURACY OF THE INFORMATION CONTAINED HEREIN, AND THE SAME IS SUBMITTED SUBJECT TO ERRORS, OMISSIONS, CHANGE OF PRICE, RENTAL OR OTHER CONDITIONS, PRIOR SALE, LEASE OR FINANCING, OR WITHDRAWAL WITHOUT NOTICE, AND OF ANY SPECIAL LISTING CONDITIONS IMPOSED BY OUR PRINCIPALS NO WARRANTIES OR REPRESENTATIONS ARE MADE AS TO THE CONDITION OF THE PROPERTY OR ANY HAZARDS CONTAINED THEREIN ARE ANY TO BE IMPLIED.

8234 Pittsburg Ave NW
North Canton, OH 44720
+1 330 966 8800

na.spring.com



Second Floor

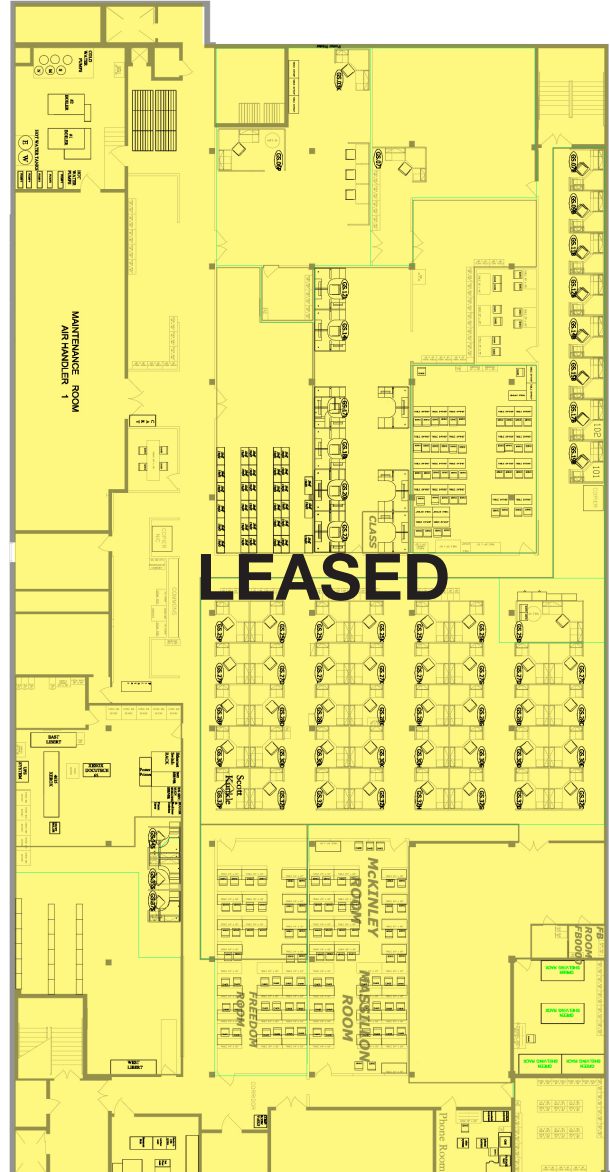


NO WARRANTY OR REPRESENTATION, EXPRESS OR IMPLIED, IS MADE AS TO THE ACCURACY OF THE INFORMATION CONTAINED HEREIN, AND THE SAME IS SUBMITTED SUBJECT TO ERRORS, OMISSIONS, CHANGE OF PRICE, RENTAL OR OTHER CONDITIONS, PRIOR SALE, LEASE OR FINANCING, OR WITHDRAWAL WITHOUT NOTICE, AND OF ANY SPECIAL LISTING CONDITIONS IMPOSED BY OUR PRINCIPALS NO WARRANTIES OR REPRESENTATIONS ARE MADE AS TO THE CONDITION OF THE PROPERTY OR ANY HAZARDS CONTAINED THEREIN ARE ANY TO BE IMPLIED.

8234 Pittsburg Ave NW
North Canton, OH 44720
+1 330 966 8800

naispring.com

Lower Level





NO WARRANTY OR REPRESENTATION, EXPRESS OR IMPLIED, IS MADE AS TO THE ACCURACY OF THE INFORMATION CONTAINED HEREIN, AND THE SAME IS SUBMITTED SUBJECT TO ERRORS, OMISSIONS, CHANGE OF PRICE, RENTAL OR OTHER CONDITIONS, PRIOR SALE, LEASE OR FINANCING, OR WITHDRAWAL WITHOUT NOTICE, AND OF ANY SPECIAL LISTING CONDITIONS IMPOSED BY OUR PRINCIPALS NO WARRANTIES OR REPRESENTATIONS ARE MADE AS TO THE CONDITION OF THE PROPERTY OR ANY HAZARDS CONTAINED THEREIN ARE ANY TO BE IMPLIED.

8234 Pittsburg Ave NW
North Canton, OH 44720
+1 330 966 8800

naispring.com