

# ROUTE 924

& Oak Ridge Rd

**FOR SALE: 31.05 ACRES ±**  
HAZLETON, PA



**LEE & ASSOCIATES**  
COMMERCIAL REAL ESTATE SERVICES



# ROUTE 924

& Oak Ridge Rd

## LOCATION & SPECIFICATIONS



4.3 MILES  
TO



### PROPERTY SPECIFICATIONS

Acres	31.05 +/-
Utilities	Water: SEC of Site across Oak Ridge Road Sewer: SEC of Site across Oak Ridge Road Power: on-site Gas: 1700' +/- South of the Site
Zoning	I-1: Industrial - Hazle Township / Luzerne County  Potential Uses: <ul style="list-style-type: none"><li>• Contractor Yard</li><li>• Equipment Sales &amp; Service</li><li>• Lumberyard</li><li>• Minor Solar Energy System</li><li>• Outdoor Storage</li><li>• Repair Garage</li><li>• Truck / Freight Terminal</li><li>• Distribution Center</li><li>• Truck Warehouse</li><li>• Self-Storage Facility</li></ul>

Route 924  
& Oak Ridge Road

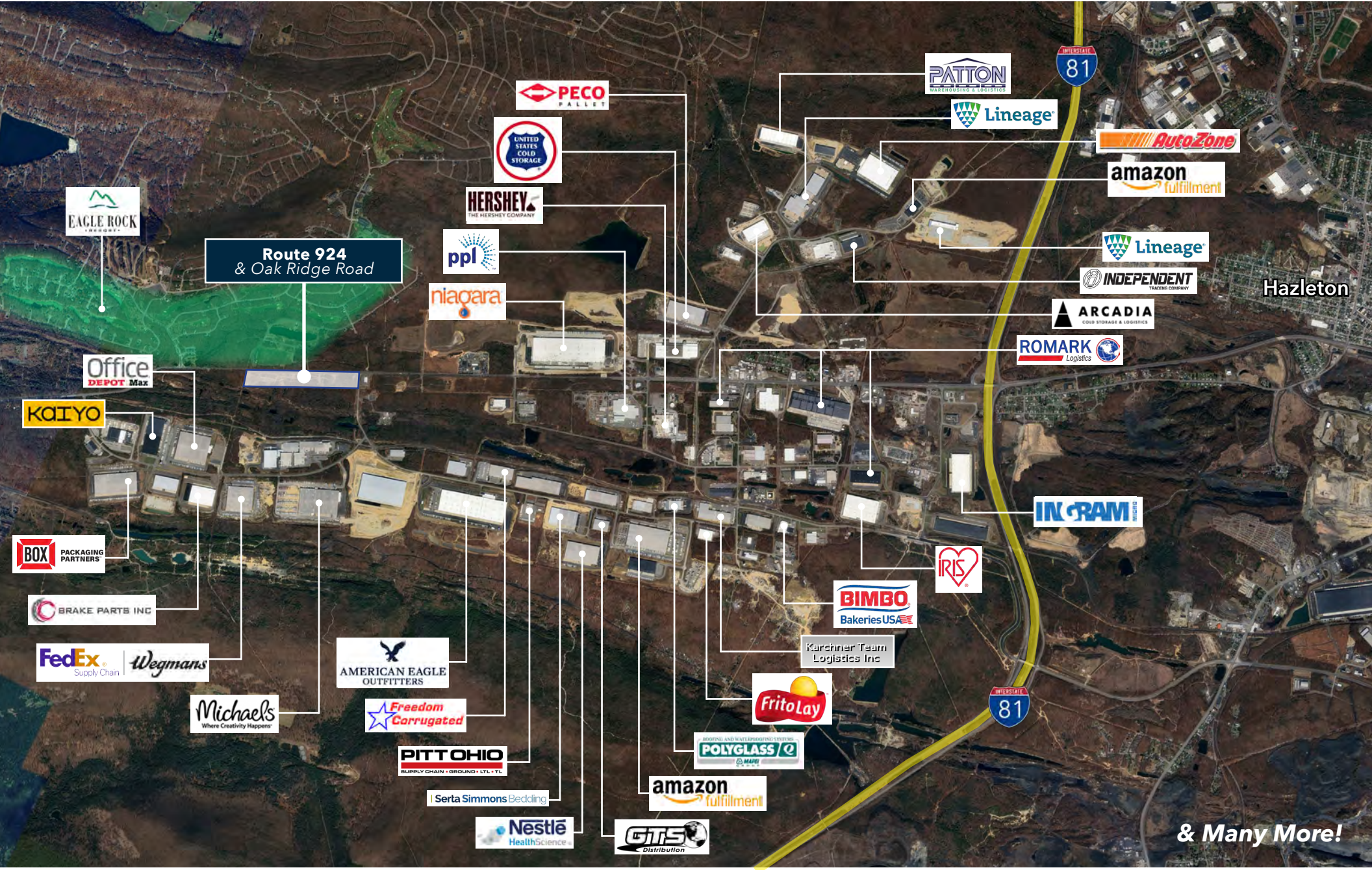




# ROUTE 924

& Oak Ridge Rd

## HUMBOLDT INDUSTRIAL PARK: CORPORATE NEIGHBORS













### Layout 3: Single Building Layout

