



CONDO FOR SALE

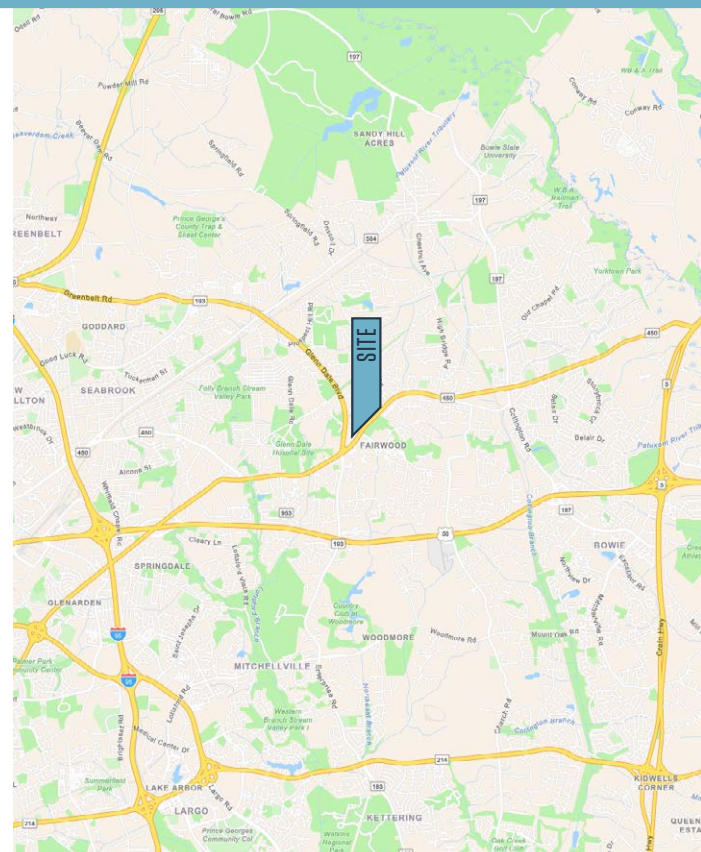
PROPERTY HIGHLIGHTS:

Condo for sale in the prestigious class A medical and office building in Glendale, Maryland presents a unique opportunity for prospective buyers.

Situated on the second floor of the building, this versatile space can cater to a variety of needs, whether it be for a medical tenant looking to establish a practice or for an office tenant seeking a turnkey solution.

Unit Highlights

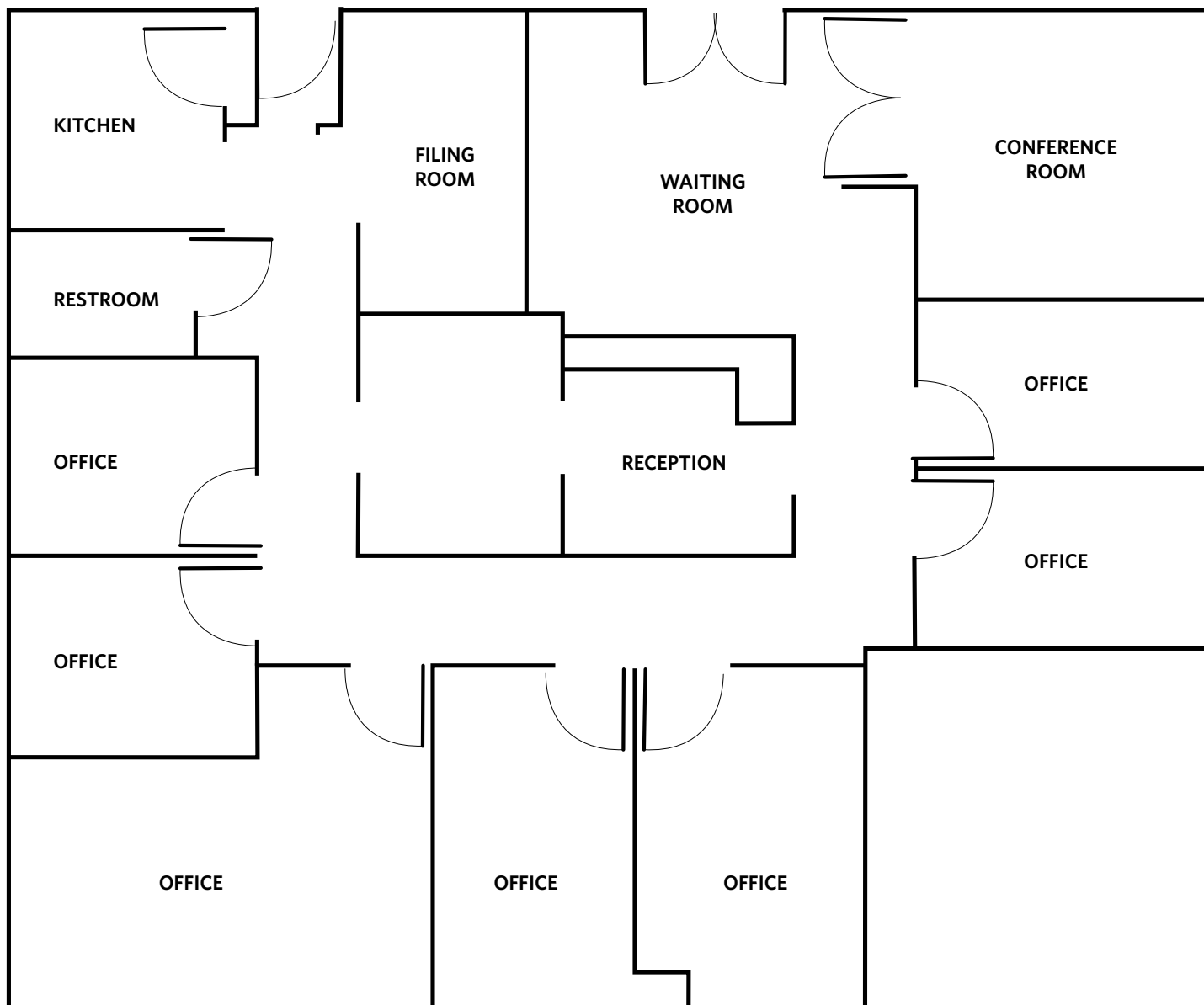
- 2,251 SF for sale \$820,000
- Class A Office or Medical Space
- Abundant Parking - Open and Covered
- Great window line
- Healthcare co-tenancy



12150 ANNAPOLIS ROAD

Unit 216, Glenn Dale, MD 20769 | Prince George's County

FLOOR PLAN



While we have no reason to doubt the accuracy of any of the information supplied, we cannot, and do not, guarantee its accuracy. All information should be independently verified prior to a purchase or lease of the property. We are not responsible for errors, omissions, misuse, or misinterpretation of information contained herein and make no warranty of any kind, express or implied, with respect to the property or any other matters.

12150 ANNAPOLIS ROAD

Unit 216, Glenn Dale, MD 20769 | Prince George's County

PHOTOS



While we have no reason to doubt the accuracy of any of the information supplied, we cannot, and do not, guarantee its accuracy. All information should be independently verified prior to a purchase or lease of the property. We are not responsible for errors, omissions, misuse, or misinterpretation of information contained herein and make no warranty of any kind, express or implied, with respect to the property or any other matters.

12150 ANNAPOLIS ROAD

Unit 216, Glenn Dale, MD 20769 | Prince George's County

CLICK TO VIEW PROPERTY WEBSITE

For More Information, Please Contact:

Colin McGonigal

cmcgonigal@klnb.com

443-632-2083

100 West Road, Suite 505

Towson, MD 21204

klnb.com



[instagram.com/klnbcre](https://www.instagram.com/klnbcre)



[linkedin.com/company/klnb](https://www.linkedin.com/company/klnb)



[facebook.com/KLNBCRE](https://www.facebook.com/KLNBCRE)

While we have no reason to doubt the accuracy of any of the information supplied, we cannot, and do not, guarantee its accuracy. All information should be independently verified prior to a purchase or lease of the property. We are not responsible for errors, omissions, misuse, or misinterpretation of information contained herein and make no warranty of any kind, express or implied, with respect to the property or any other matters.