



# OFFICE/MEDICAL SPACE FOR LEASE

NORTHBROOK PROFESSIONAL PLAZA  
1535 LAKE COOK ROAD, NORTHBROOK IL

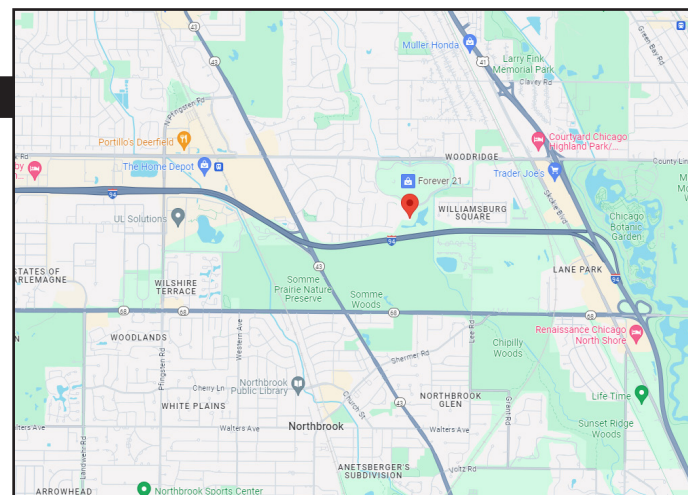


## BUILDING FEATURES:

- 920-2,530 SF Office or Medical Space Available
- Located directly adjacent to Northbrook Court Mall
- Minutes from Edens & Tri-State Expressways
- Tenant controlled HVAC & 24-hour tenant access
- Comcast high-speed internet and cable available
- Beautifully landscaped with fountain and pond
- New Building Monument Sign with Tenant Signage Available
- Build to suit office & medical space
- Zoned O-2
- Operable windows & tenant signage available
- Asking Rent: \$14.00- \$15.00 Net PSF + CAM & Real Estate Taxes

## AVAILABLE SPACE:

SUITE	USE	SIZE	Available
107	Office/Medical	2,350 SF	ASAP
208	Office/Medical	1,720 SF	ASAP
410	Office/Medical	1,525 SF	ASAP



## FOR MORE INFORMATION:

RANDY OLCZYK  
President/Principal  
Direct: 847.246.9611  
randy@chicagolandcommercial.com

TOM CALLAHAN  
Senior Vice President  
Direct: 847.246.9636  
Tom@chicagolandcommercial.com



4811 Emerson Ave Suite 112, Palatine, IL

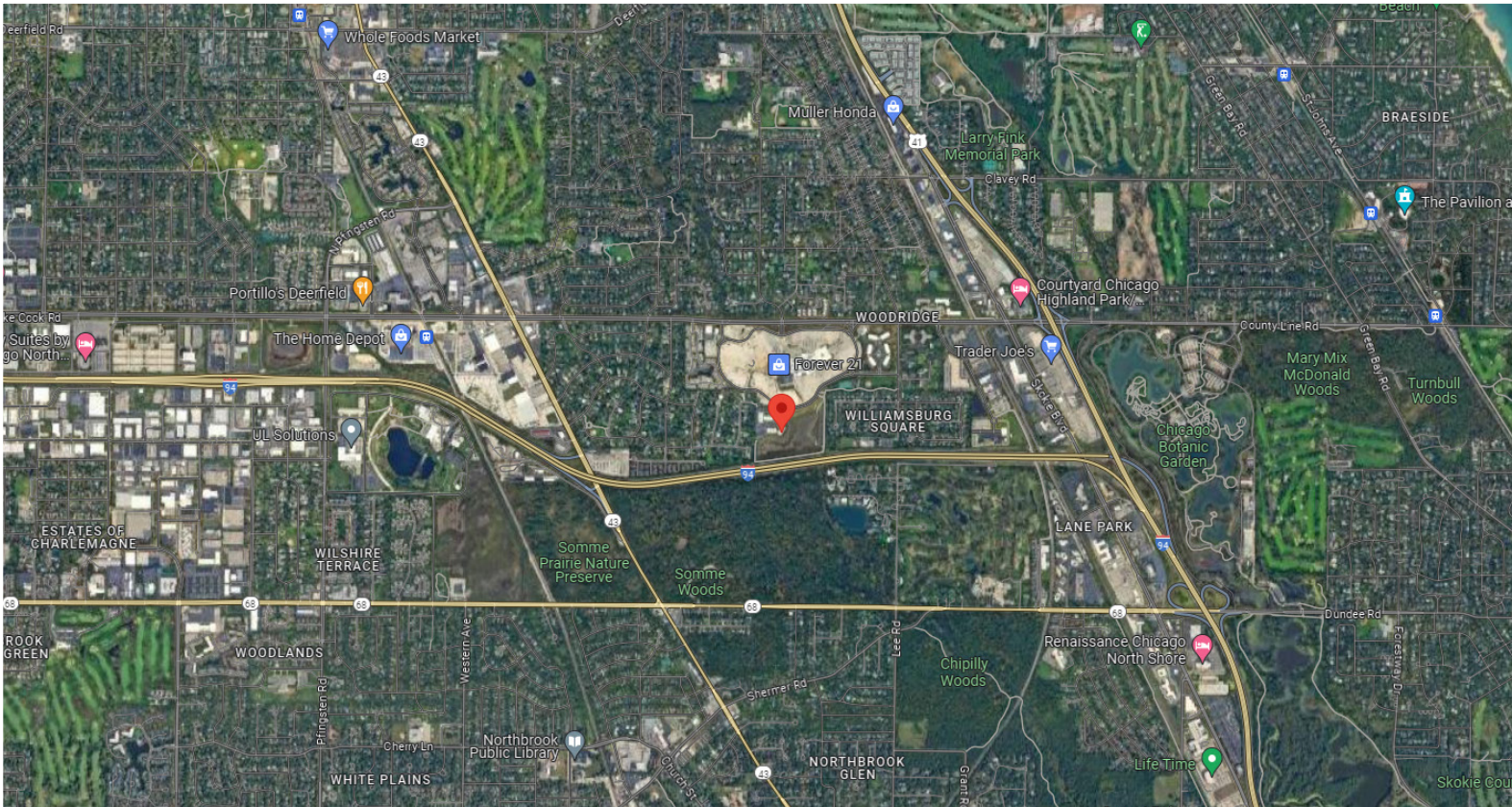
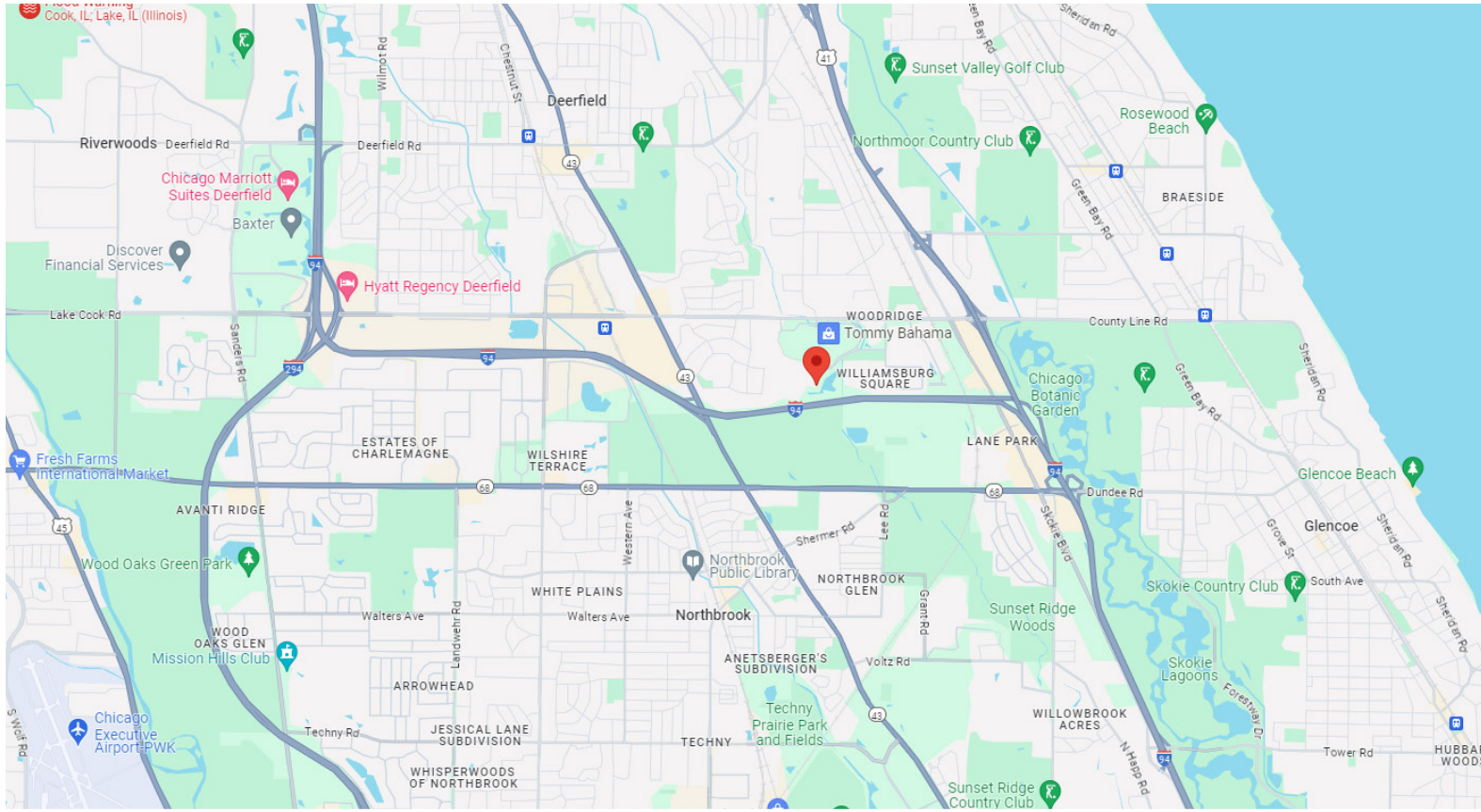




# OFFICE/MEDICAL SPACE FOR LEASE

## NORTHBROOK PROFESSIONAL PLAZA

1535 LAKE COOK ROAD, NORTHBROOK IL



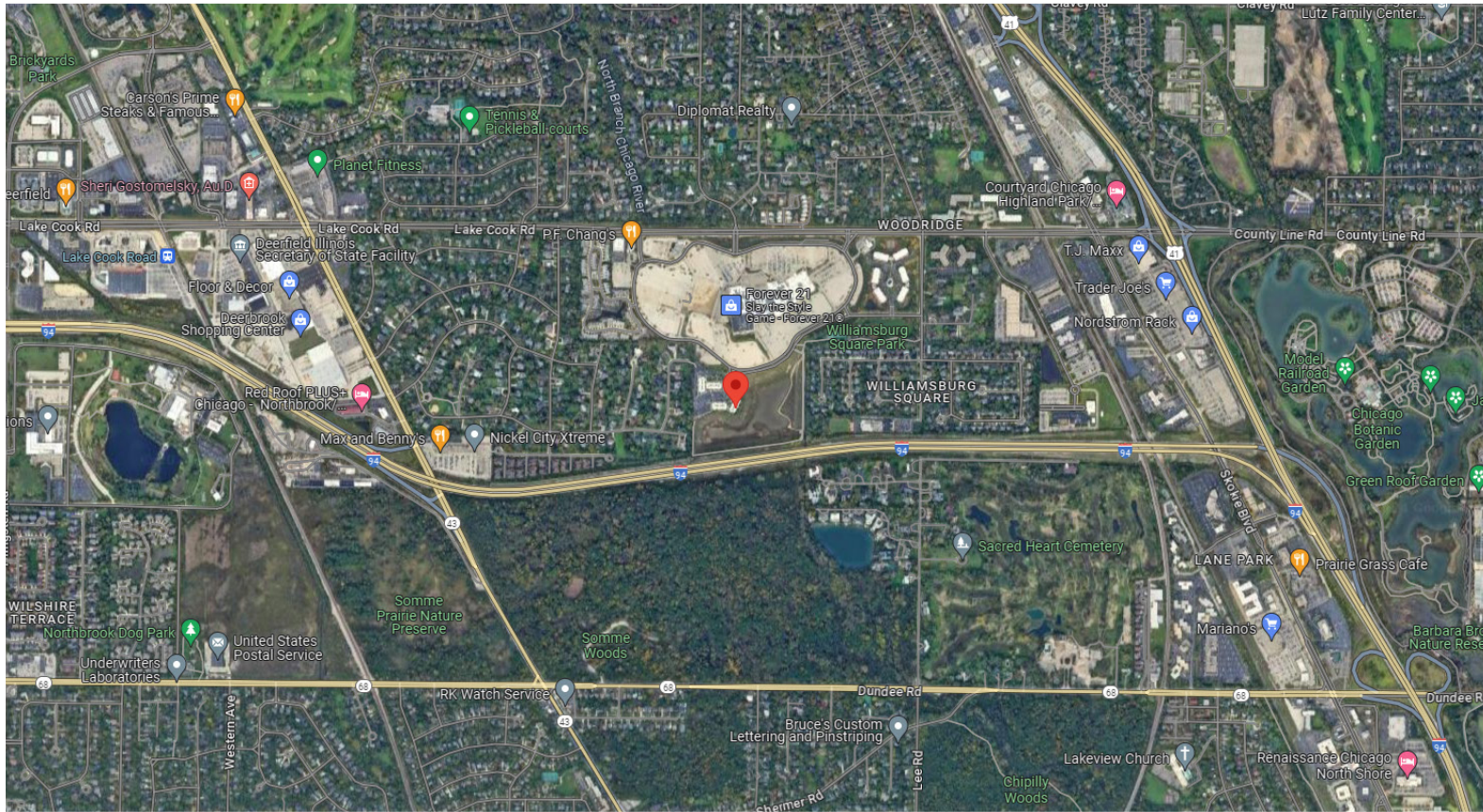




# OFFICE/MEDICAL SPACE FOR LEASE

## NORTHBROOK PROFESSIONAL PLAZA

1535 LAKE COOK ROAD, NORTHBROOK IL







# OFFICE/MEDICAL SPACE FOR LEASE

NORTHBROOK PROFESSIONAL PLAZA  
1535 LAKE COOK ROAD, NORTHBROOK IL

## BUILDING PHOTOGRAPHS



BEAUTIFULLY LANDSCAPED GROUNDS  
LOCATED DIRECTLY NEXT TO  
NORTHBROOK COURT MALL







# OFFICE/MEDICAL SPACE FOR LEASE

NORTHBROOK PROFESSIONAL PLAZA  
1535 LAKE COOK ROAD, NORTHBROOK IL



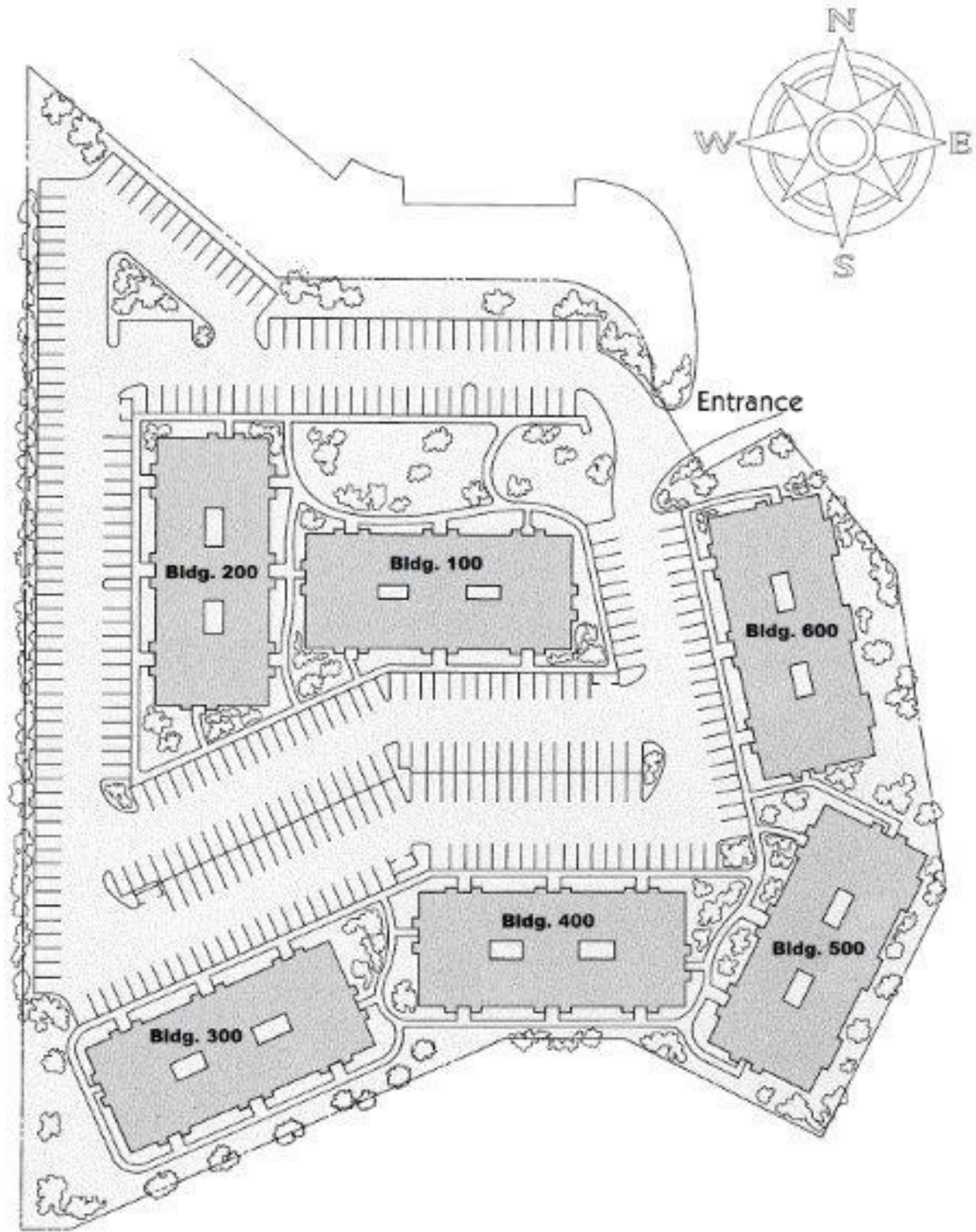




# OFFICE/MEDICAL SPACE FOR LEASE

NORTHBROOK PROFESSIONAL PLAZA  
1535 LAKE COOK ROAD, NORTHBROOK IL

## BUILDING SITE PLAN



### ***Northbrook Court Professional Plaza***



# OFFICE/MEDICAL SPACE FOR LEASE

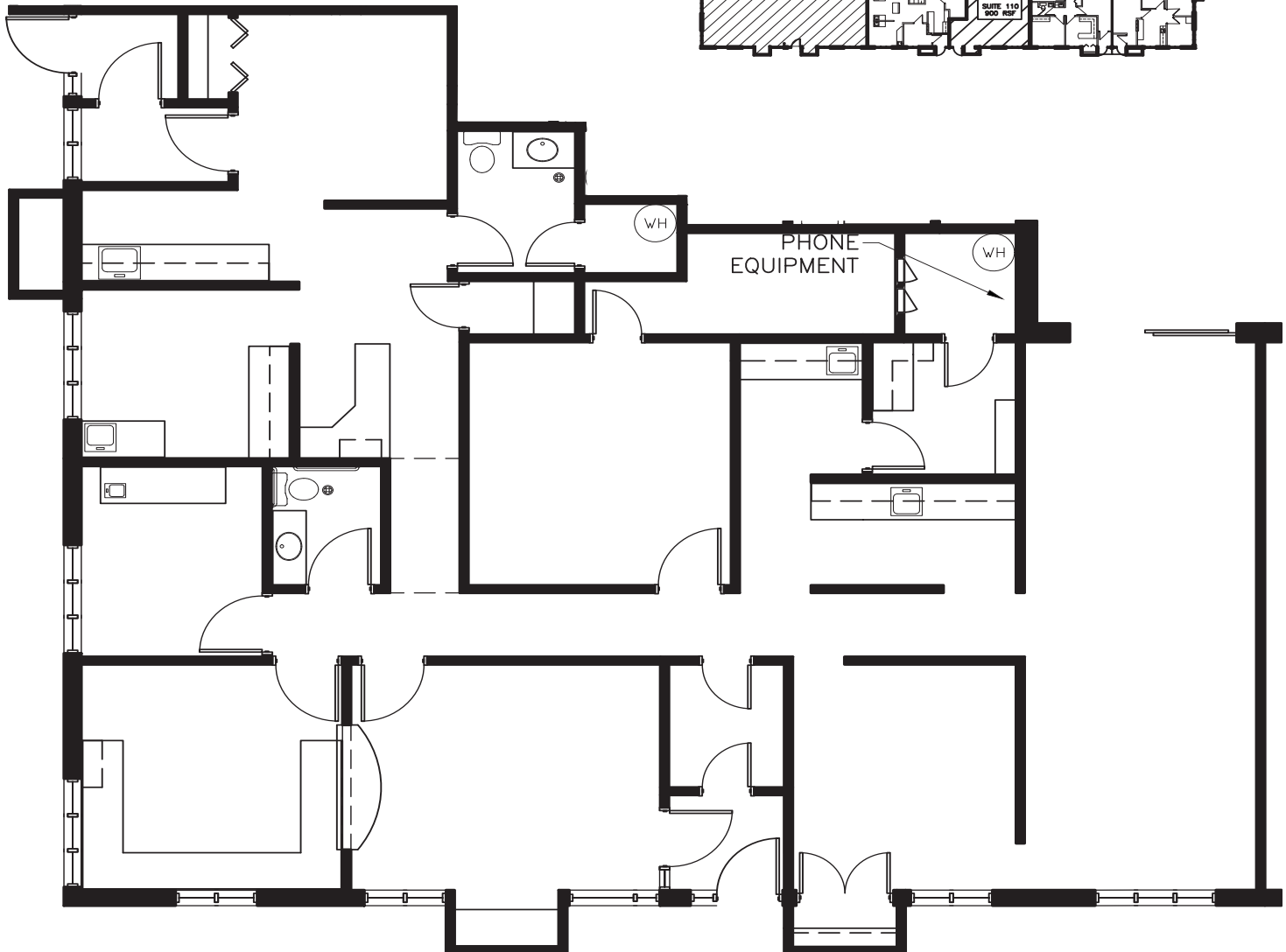
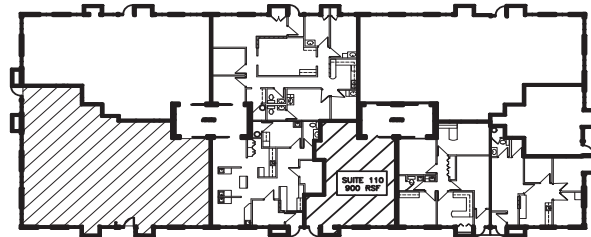
NORTHBROOK PROFESSIONAL PLAZA  
1535 LAKE COOK ROAD, NORTHBROOK IL

## FLOOR PLAN SUITE 107 (2,350 SF)

### Northbrook Court Professional Plaza

1535 Lake Cook Road, Northbrook, Illinois 60062

Key Plan:



### Suite #107 - As-Built Conditions

2,350 Rentable Square Feet

Scale:

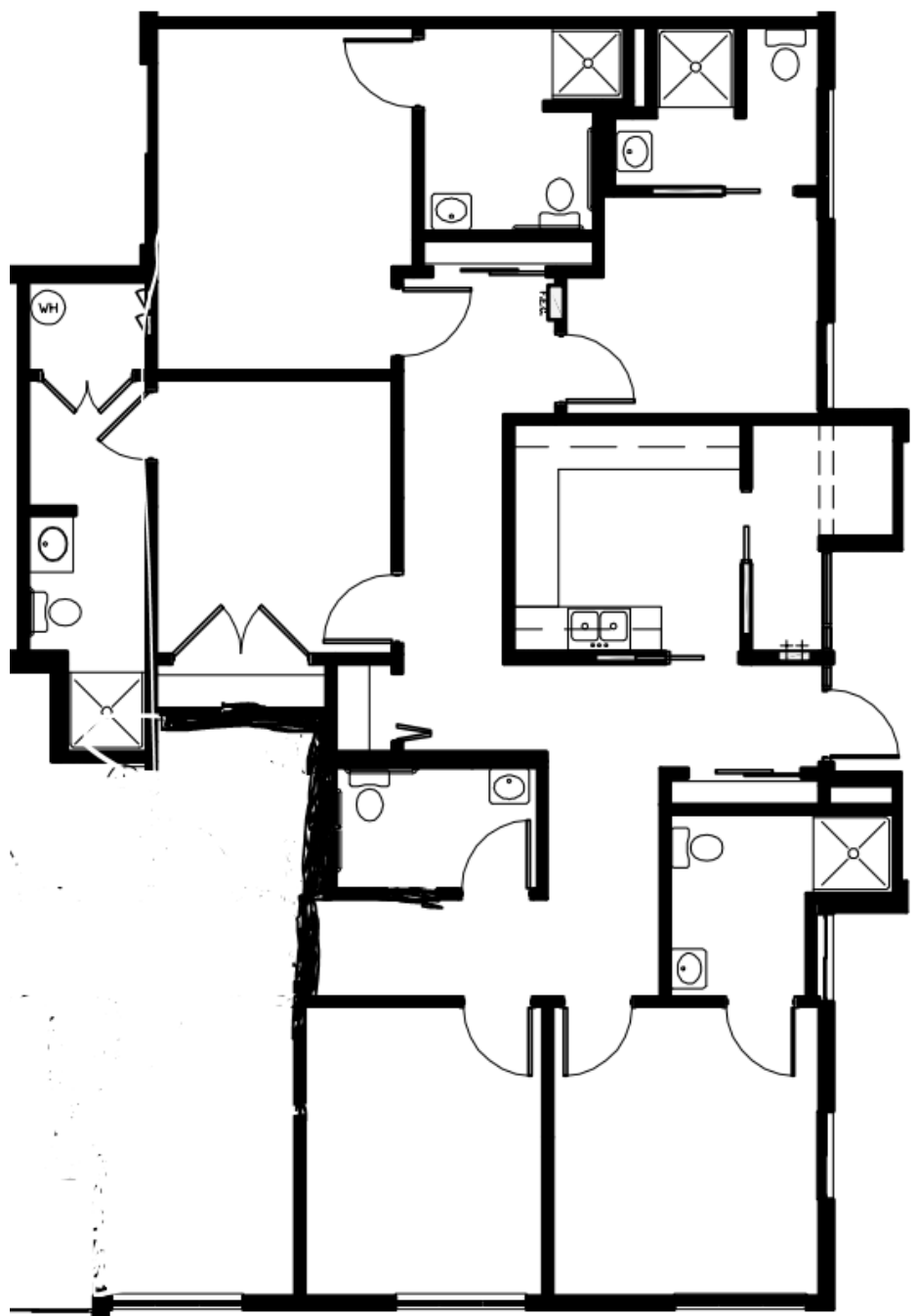
N.T.S.



# OFFICE/MEDICAL SPACE FOR LEASE

NORTHBROOK PROFESSIONAL PLAZA  
1535 LAKE COOK ROAD, NORTHBROOK IL

FLOOR PLAN SUITE 208 (1,720 SF)







# OFFICE/MEDICAL SPACE FOR LEASE

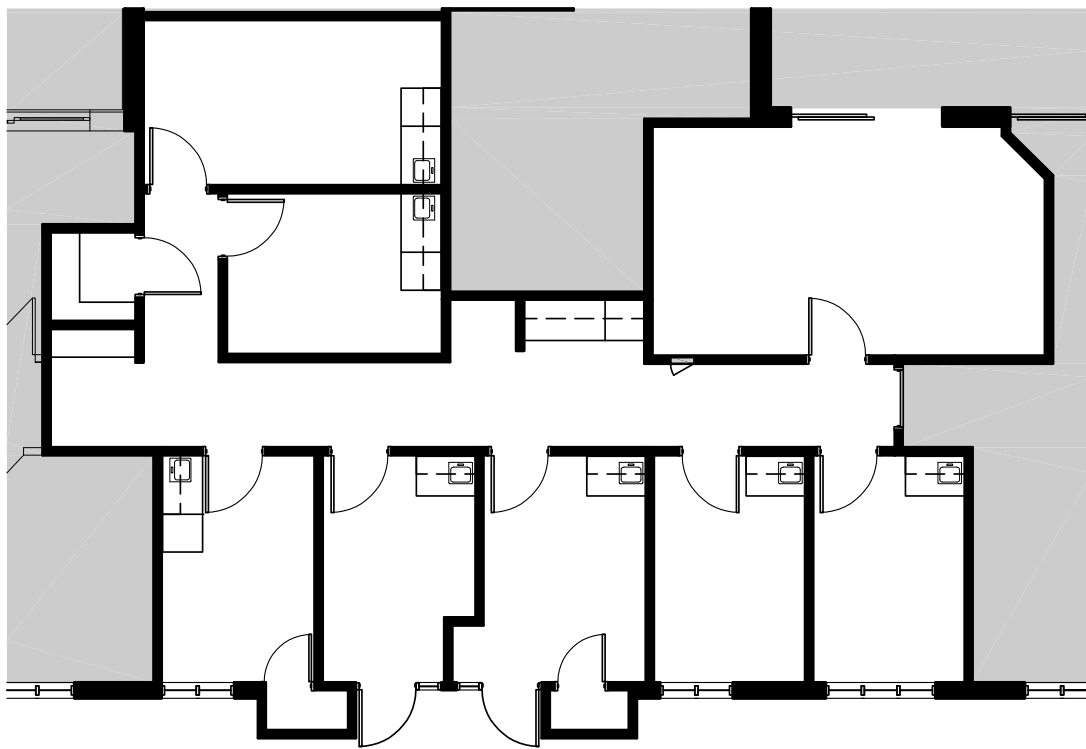
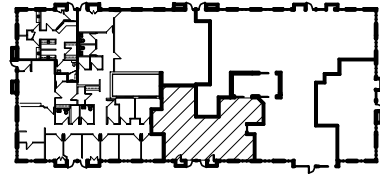
NORTHBROOK PROFESSIONAL PLAZA  
1535 LAKE COOK ROAD, NORTHBROOK IL

## FLOOR PLAN SUITE 410 (1,525 SF)

### Northbrook Court Professional Plaza

1535 Lake Cooke Road  
Northbrook, Illinois 60062

Key Plan:



### Suite #410 - As-Built Conditions

1,525 Rentable Square Feet

Scale:

N.T.S.





# OFFICE/MEDICAL SPACE FOR LEASE

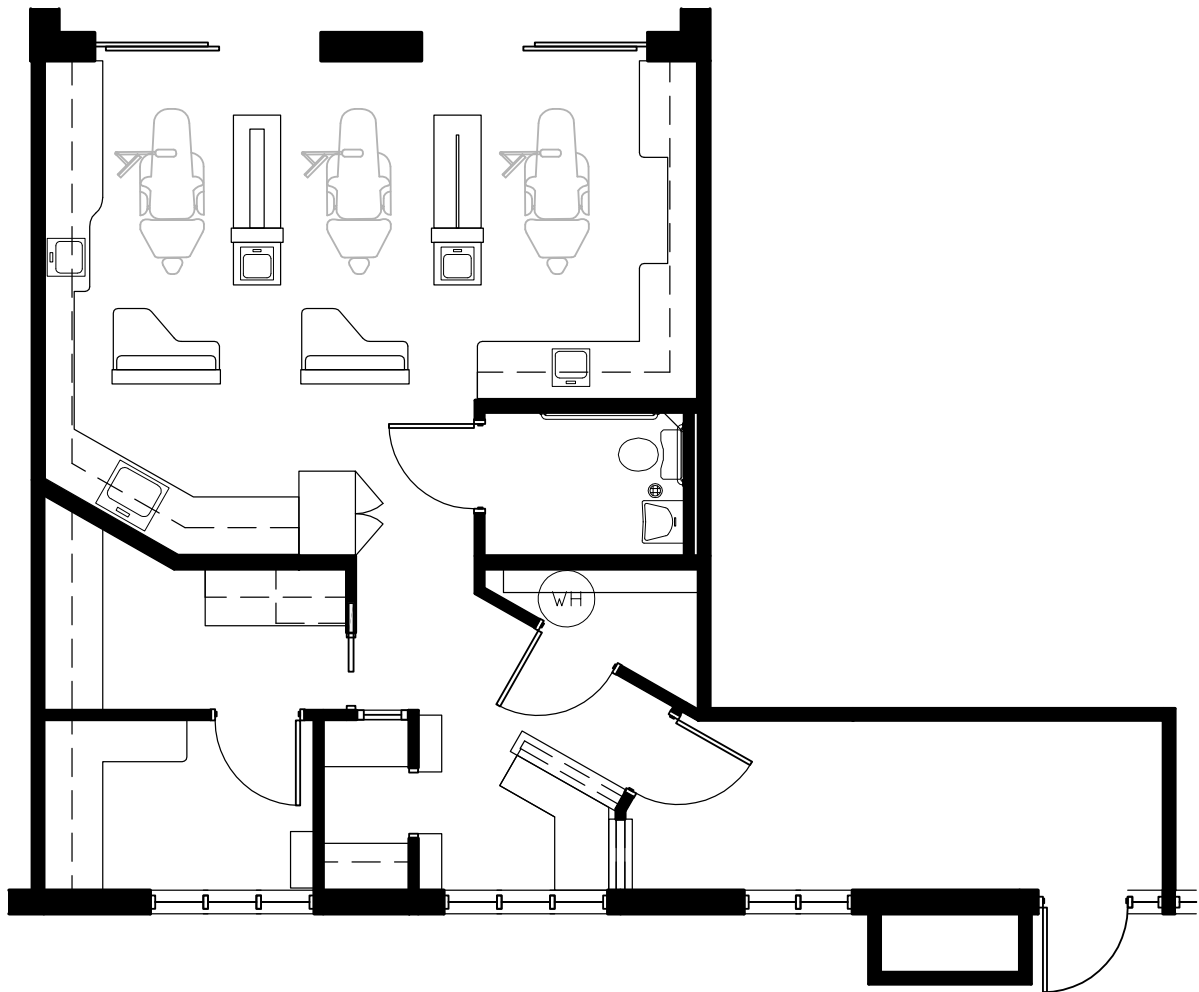
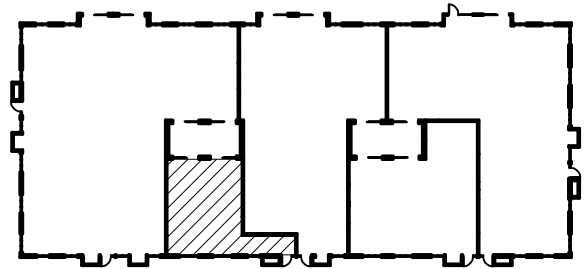
NORTHBROOK PROFESSIONAL PLAZA  
1535 LAKE COOK ROAD, NORTHBROOK IL

FLOOR PLAN SUITE 602 (920 SF)

## Northbrook Court Professional Plaza

1535 Lake Cook Road, Northbrook, Illinois 60062

Key Plan:



### Suite #602 - As-Built Conditions

920 Rentable Square Feet

Scale:

N.T.S.





# OFFICE/MEDICAL SPACE FOR LEASE

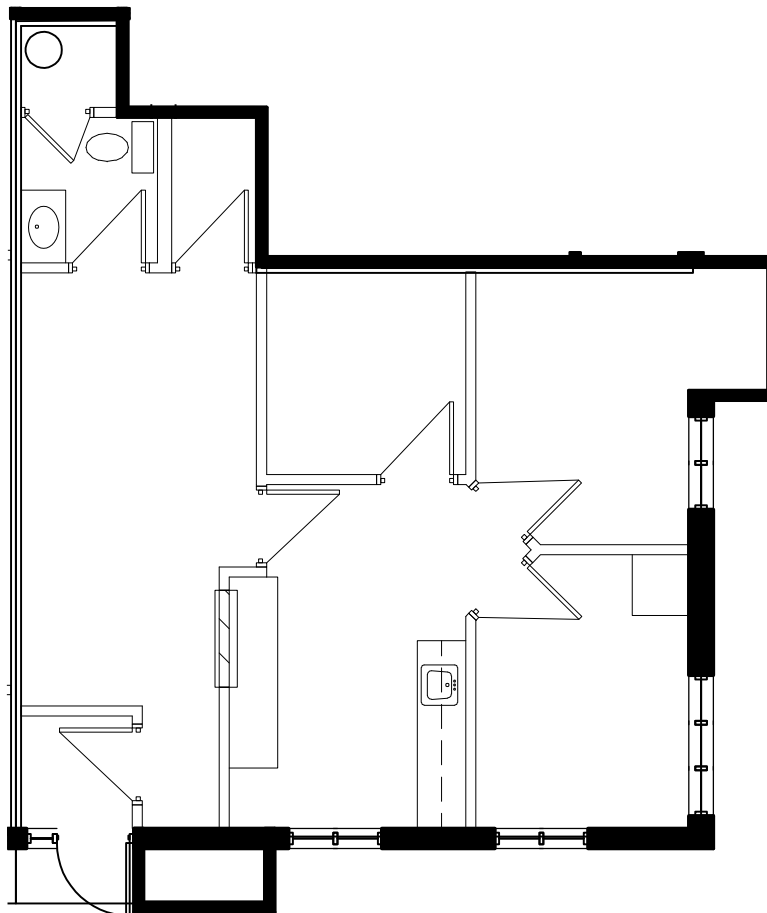
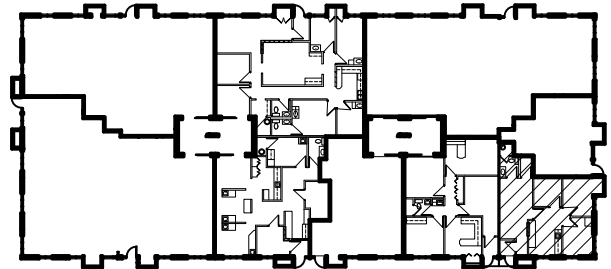
NORTHBROOK PROFESSIONAL PLAZA  
1535 LAKE COOK ROAD, NORTHBROOK IL

FLOOR PLAN SUITE 112 (790 SF)

## Northbrook Court Professional Plaza

1535 Lake Cook Road, Northbrook, Illinois 60062

Key Plan:



### Suite #112 - As-Built Conditions

790 Rentable Square Feet

Scale:

N.T.S.





# OFFICE/MEDICAL SPACE FOR LEASE

NORTHBROOK PROFESSIONAL PLAZA  
1535 LAKE COOK ROAD, NORTHBROOK IL

## FLOOR PLAN SUITE 212 (1,400 SF)

1535 Lake Cook Road, Northbrook  
Suite 212  
1,400 SF

As Built

