



NEW HAMPSHIRE
OUTLET
LIQUOR & WINE

VIP
TIRES & SERVICE
O'Reilly

AUTOSAVER GROUP
LITTLETON
CHEVROLET

THE
HOME
DEPOT

enterprise

MEADOW ST

SITE

LOWE'S

INDUSTRIAL PARK RD

FOR SALE

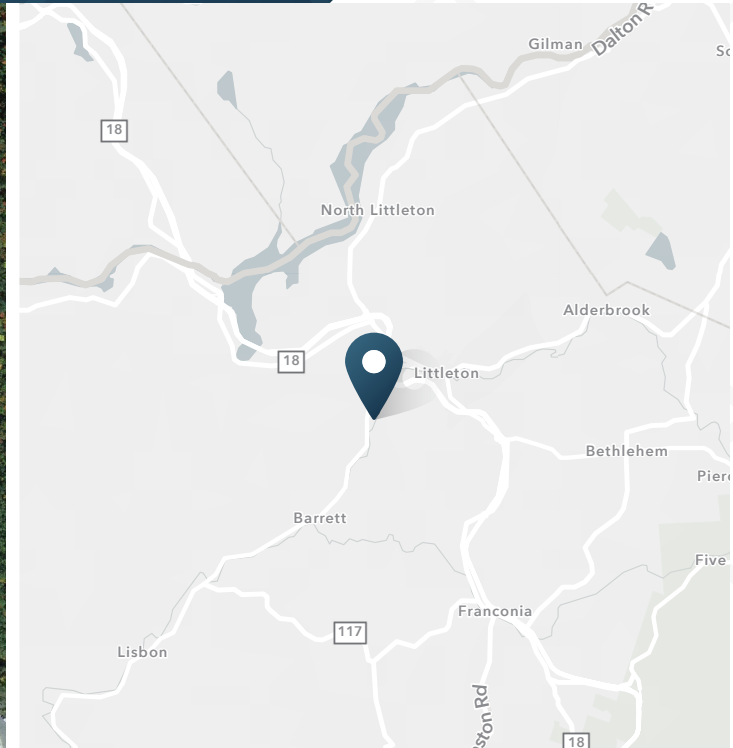
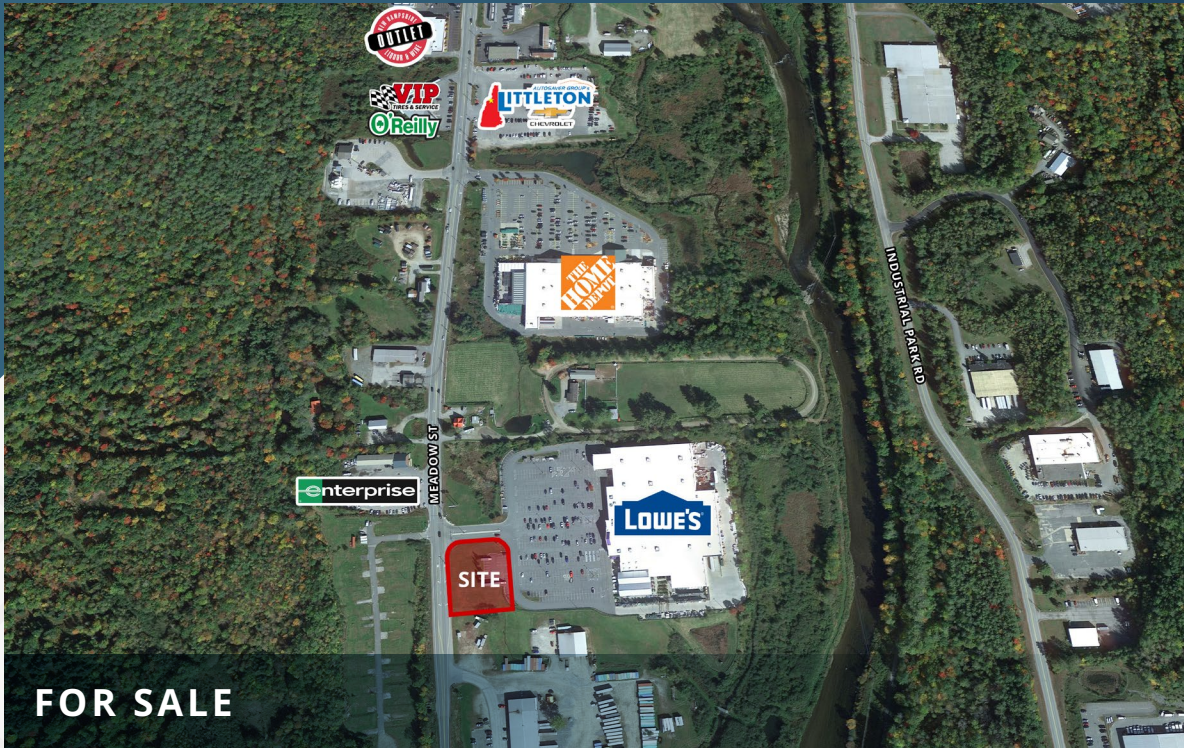
Lowe's Carve Out

1037 Meadow Street | Littleton, NH 03561

 **SRS**

Lowe's Carve Out

1037 Meadow Street | Littleton, NH 03561



FOR SALE

1.12 AC
For Sale

Contact Broker
Rate

ABOUT THE PROPERTY

- This carve out opportunity is approximately a 1.12 acre pad located on Route 32 in Littleton's major retail corridor.
- The site is less than 1 mile from I-93 and minutes from the Vermont border.
- Route 302 includes Walmart, Home Depot, Shaw's, Tractor Supply, T.J. Maxx, Starbucks, and many other national retailers.

CURRENT TENANTS



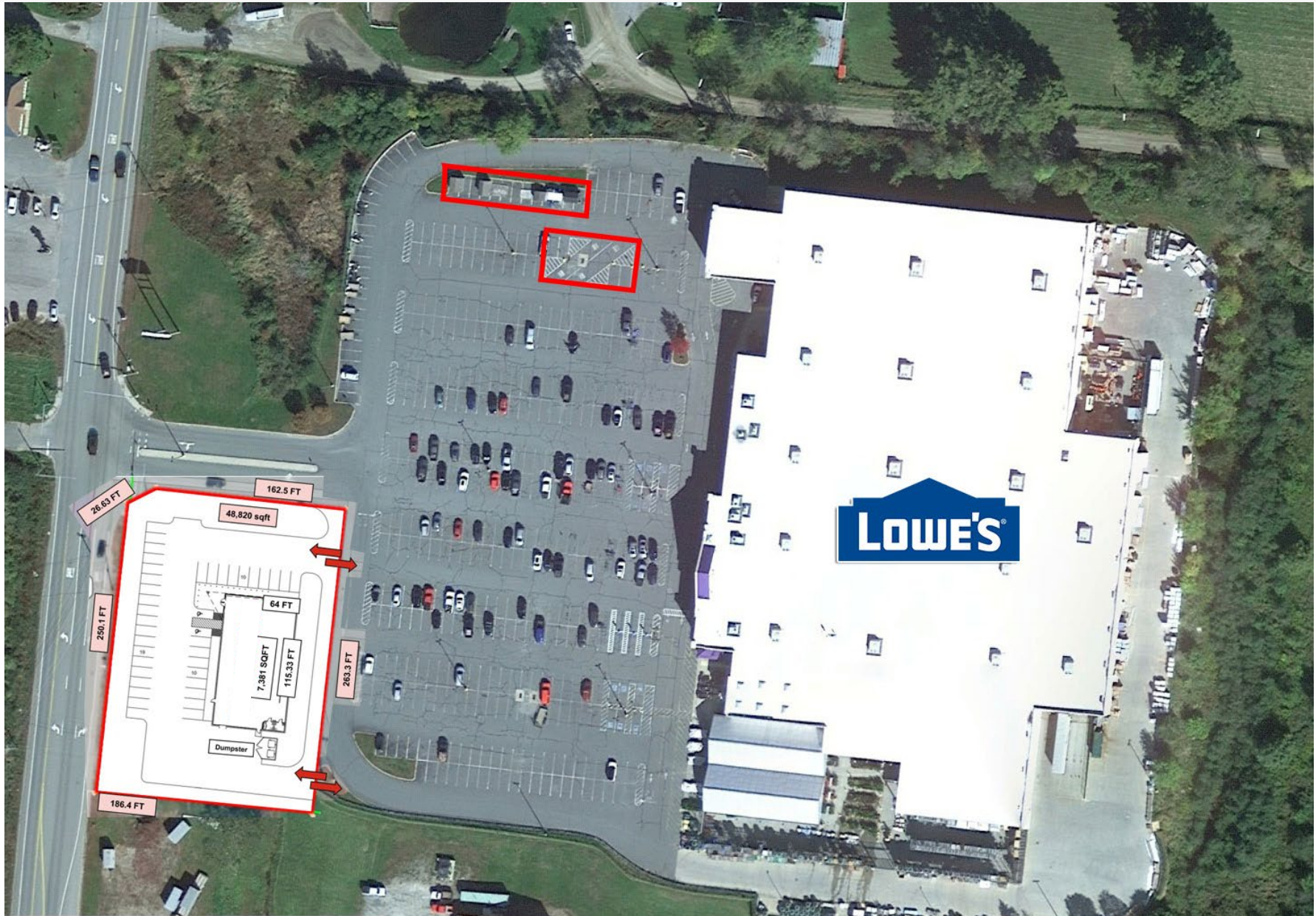
TRAFFIC COUNTS

US 302; NH 10 14,742 VPD
Meadow Street 15,179 VPD
Year: 2021 | Source: ESRI



Lowe's Carve Out

1037 Meadow Street | Littleton, NH 03561



Existing Store Parking: 521
Remaining Store Parking: 485
Total Loss of Parking Spaces: 36
Location of Outdoor Sheds: Pro Side
Angled Pro Parking: 2

Lowes Carve Out

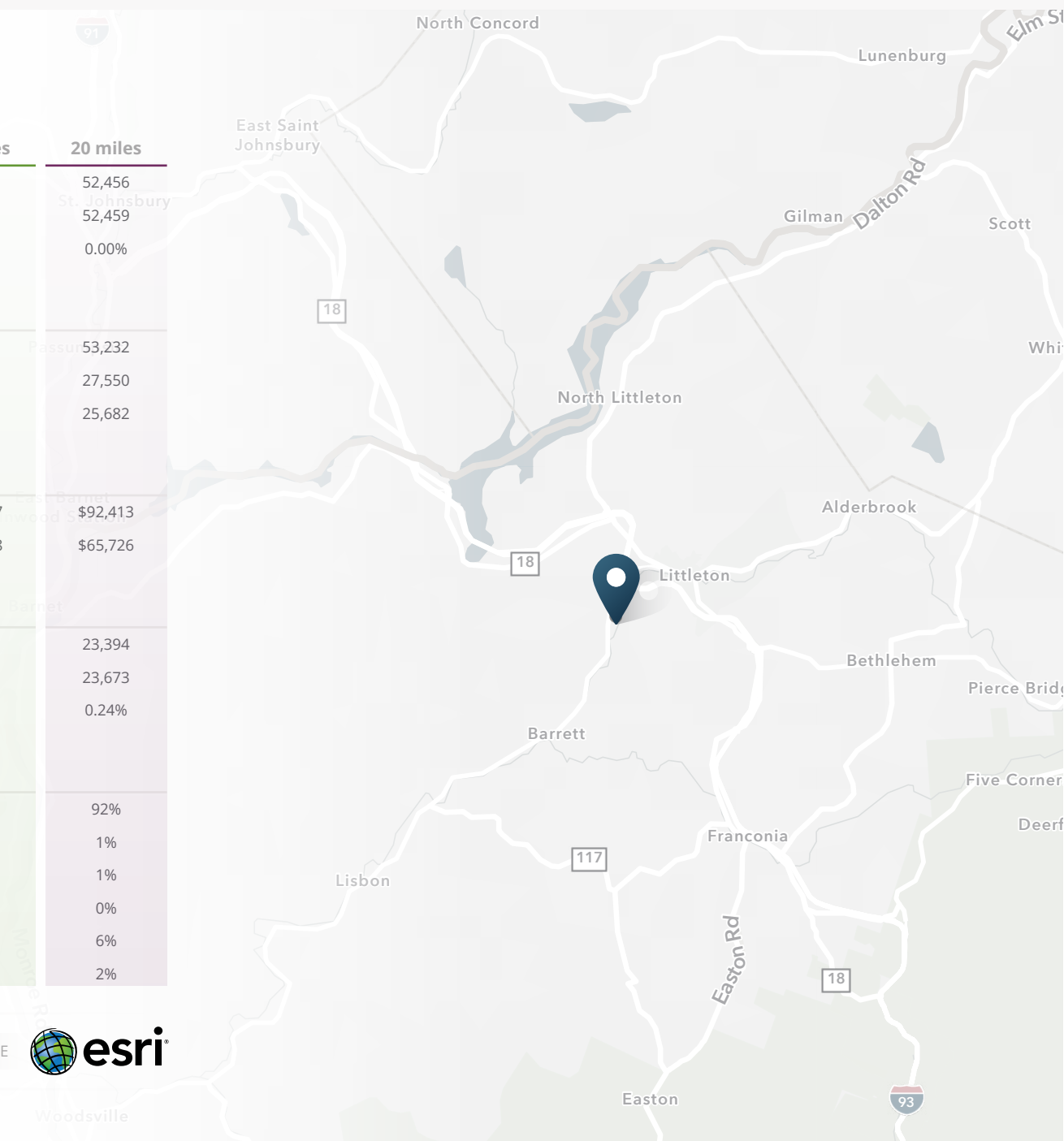
1037 Meadow Street | Littleton, NH 03561



DEMOGRAPHIC HIGHLIGHTS

Population	10 miles	15 miles	20 miles
2025 Estimated Population	15,825	31,291	52,456
2030 Projected Population	15,976	31,316	52,459
Proj. Annual Growth 2025 to 2030	0.19%	0.02%	0.00%
Daytime Population			
2025 Daytime Population	15,666	31,118	53,232
Workers	7,437	15,258	27,550
Residents	8,229	15,860	25,682
Income			
2025 Est. Average Household Income	\$95,631	\$90,017	\$92,413
2025 Est. Median Household Income	\$65,426	\$63,148	\$65,726
Households & Growth			
2025 Estimated Households	7,231	13,985	23,394
2030 Estimated Households	7,357	14,160	23,673
Proj. Annual Growth 2025 to 2030	0.35%	0.25%	0.24%
Race & Ethnicity			
2025 Est. White	92%	91%	92%
2025 Est. Black or African American	1%	1%	1%
2025 Est. Asian or Pacific Islander	1%	1%	1%
2025 Est. American Indian or Native Alaskan	0%	0%	0%
2025 Est. Other Races	6%	6%	6%
2025 Est. Hispanic (Any Race)	3%	3%	2%

> **Want more?** Contact us for a complete demographic, foot-traffic, and mobile data insights report.





SRS Real Estate Partners
400 Fifth Avenue, Suite 105
Waltham, MA 02451
857.263.3839

BRYAN WRIGHT
617.245.0671
Bryan.Wright@srsre.com

CHRISTIAN P.G. JANELLE
617.872.1115
Chris.Janelle@srsre.com

JONATHAN LAPAT
BROKER OF RECORD

SRSRE.COM

© SRS Real Estate Partners

The information presented was obtained from sources deemed reliable;
however SRS Real Estate Partners does not guarantee its completeness or accuracy.