

7,000 SF

Industrial Property For Sale



BROWN
COMMERCIAL GROUP, INC.

2082 ESTES AVE., ELK GROVE VILLAGE, IL 60007

NEW 2026 6B

17,500 SF± FENCED YARD



LOCATION DESCRIPTION

Well positioned location in established industrial park. Easy access to major transportation routes via nearby Rt. 83, I-90.

PROPERTY OVERVIEW

- 7,000 SF Building
- 800 ± SF Office Space
- 12' Clear Ceiling Height
- 1 Exterior Dock
- 1 Drive-in Door (12' x 14')
- New 2026 6B
- 17,500 ± SF Fenced Yard Space
- 200 Amp, 240 Volt, 3 Phase Power
- Remodeled in 2025; New Roof in 2019
- Sale Price: Subject to Offer



TRINITY SCURTO, SIOR

847.758.9200 x304

TSCURTO@BROWNCOMMERCIAL.COM

PAT CROWLEY

847.758.9200 x310

PCROWLEY@BROWNCOMMERCIAL.COM

BROWNCOMMERCIAL.COM

//

1400 E. HIGGINS RD. SUITE A, ELK GROVE VILLAGE, IL 60007

//

847.758.9200

No warranties or representations is made as to the accuracy of the foregoing information. Terms and availability are subject to changes or withdrawal without notice

7,000 SF

Industrial Property For Sale



BROWN
COMMERCIAL GROUP, INC.

2082 ESTES AVE., ELK GROVE VILLAGE, IL 60007



TRINITY SCURTO, SIOR

847.758.9200 x304

TSCURTO@BROWNCOMMERCIAL.COM

PAT CROWLEY

847.758.9200 x310

PCROWLEY@BROWNCOMMERCIAL.COM

BROWNCOMMERCIAL.COM

// 1400 E. HIGGINS RD. SUITE A, ELK GROVE VILLAGE, IL 60007

// 847.758.9200

No warranties or representations is made as to the accuracy of the foregoing information. Terms and availability are subject to changes or withdrawal without notice

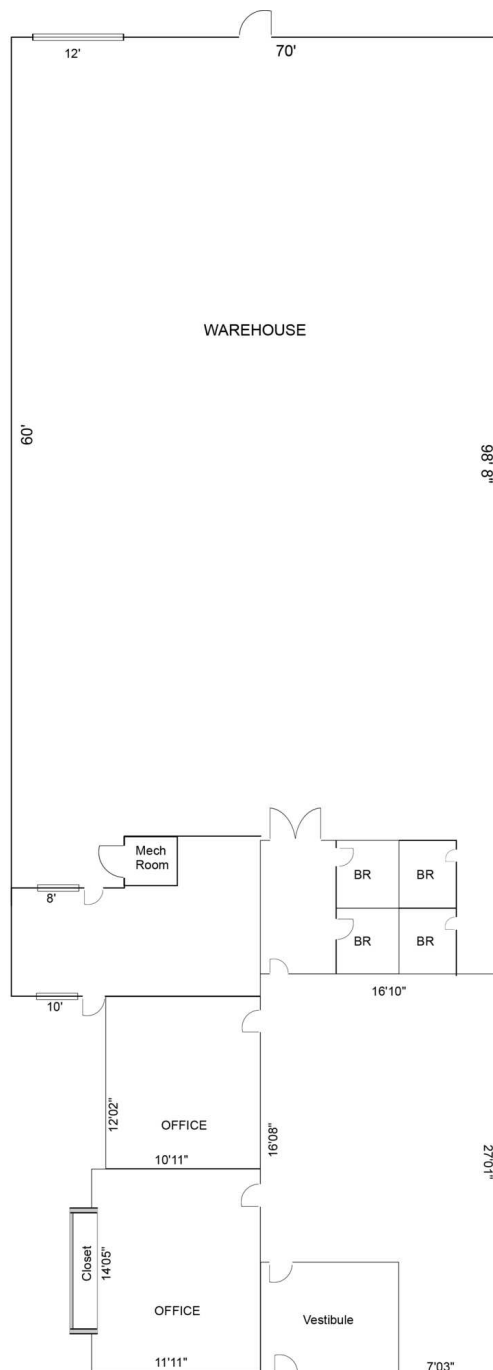
7,000 SF

Industrial Property For Sale



BROWN
COMMERCIAL GROUP, INC.

2082 ESTES AVE., ELK GROVE VILLAGE, IL 60007



TRINITY SCURTO, SIOR

847.758.9200 x304

TSCURTO@BROWNCOMMERCIAL.COM

PAT CROWLEY

847.758.9200 x310

PCROWLEY@BROWNCOMMERCIAL.COM

BROWNCOMMERCIAL.COM

//

1400 E. HIGGINS RD. SUITE A, ELK GROVE VILLAGE, IL 60007

//

847.758.9200

No warranties or representations is made as to the accuracy of the foregoing information. Terms and availability are subject to changes or withdrawal without notice